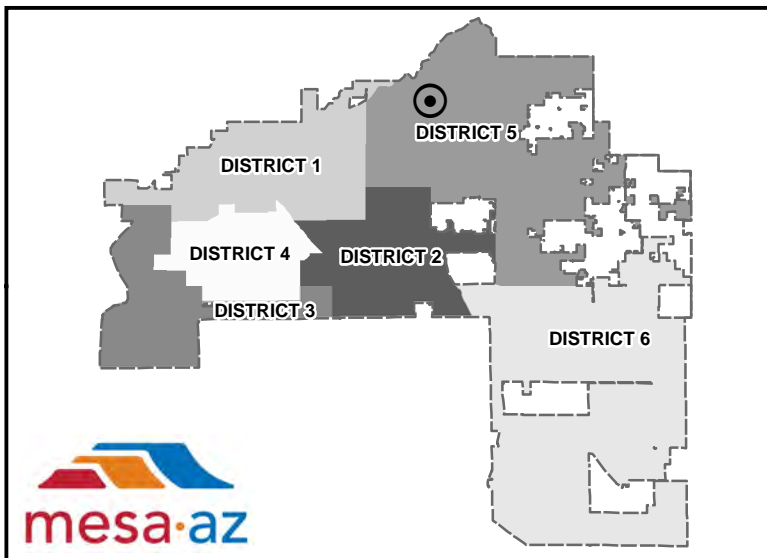
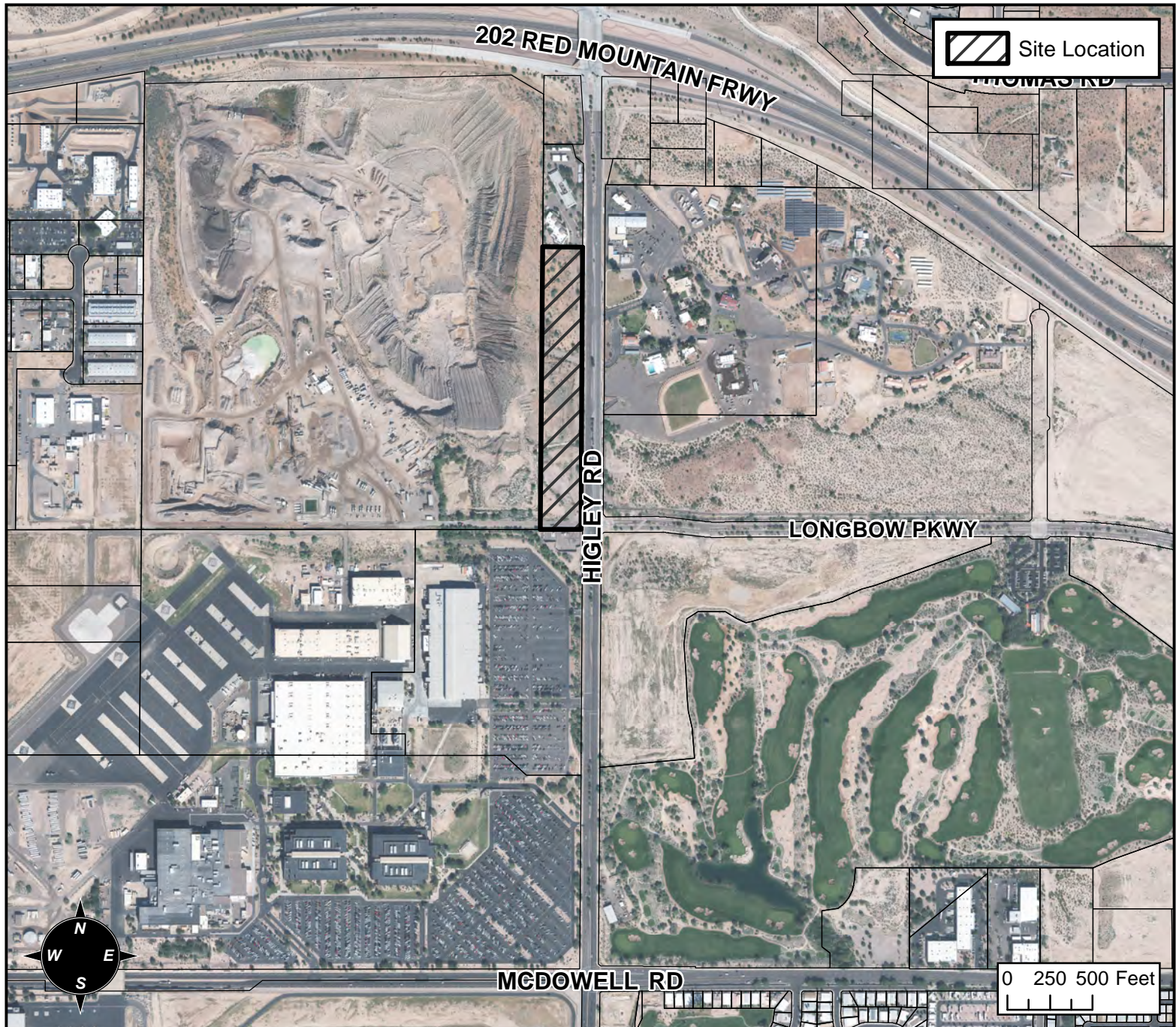


PLANNING AND ZONING VICINITY MAP: Z16-041



CASE DETAILS

CASE:

Z16-041

PRE-PLAT : ☒

SITE / ADDRESS:

3200 THROUGH 3400 BLOCKS OF N HIGLEY RD (WEST SIDE) - (DISTRICT 5)

REQUEST:

SITE PLAN REVIEW. THIS REQUEST WILL ALLOW FOR A LIGHT INDUSTRIAL DEVELOPMENT AND ASSOCIATED STORAGE YARDS.