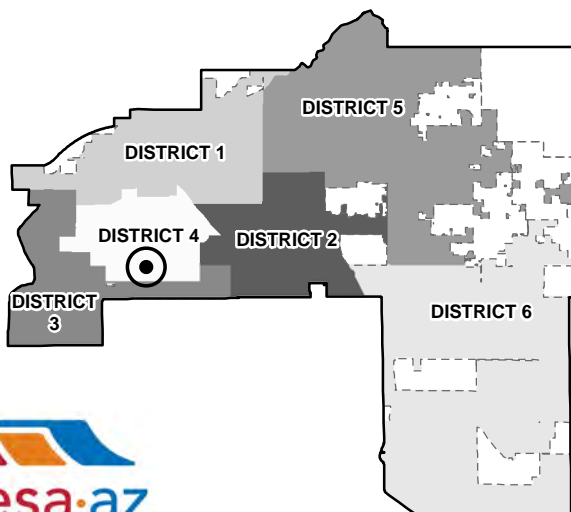
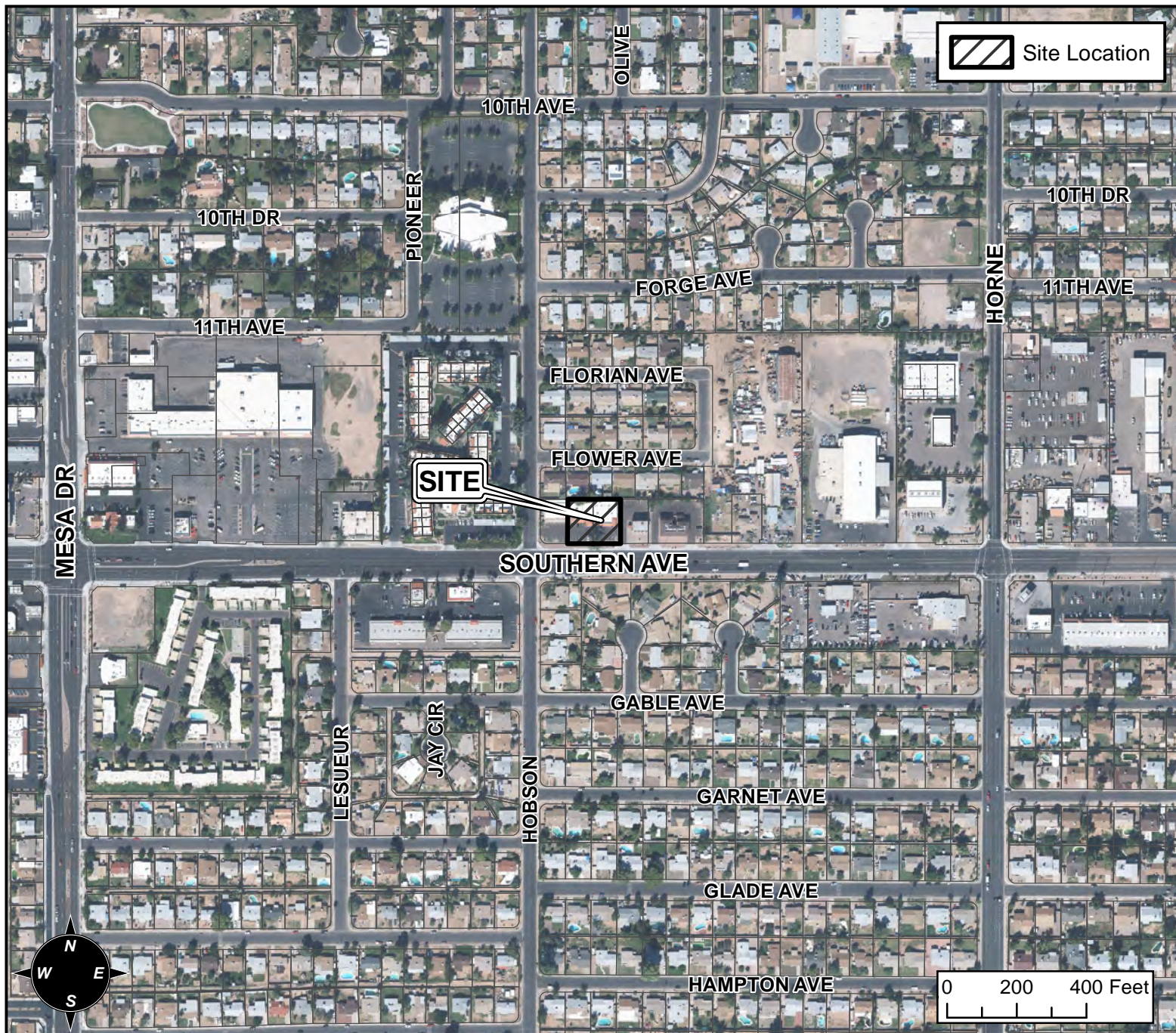


# BOARD OF ADJUSTMENT VICINITY MAP: BA16-027



## CASE DETAIL

### CASE:

BA16-027

### SITE / ADDRESS:

616 E SOUTHERN AVE - (DISTRICT 4)

### REQUEST:

REQUESTING: 1) A SUBSTANTIAL CONFORMANCE IMPROVEMENT PERMIT (SCIP) TO ALLOW AN EXISTING PROFESSIONAL OFFICE BUILDING TO BE USED FOR A MEDICAL OFFICE; 2) A SPECIAL USE PERMIT (SUP) FOR A REDUCTION IN THE REQUIRED PARKING SPACES; ALL IN THE RM-4 ZONING DISTRICT.