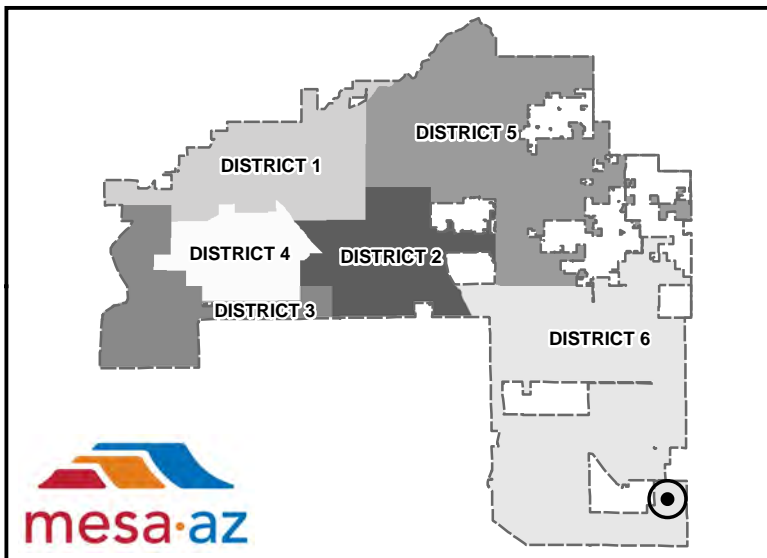
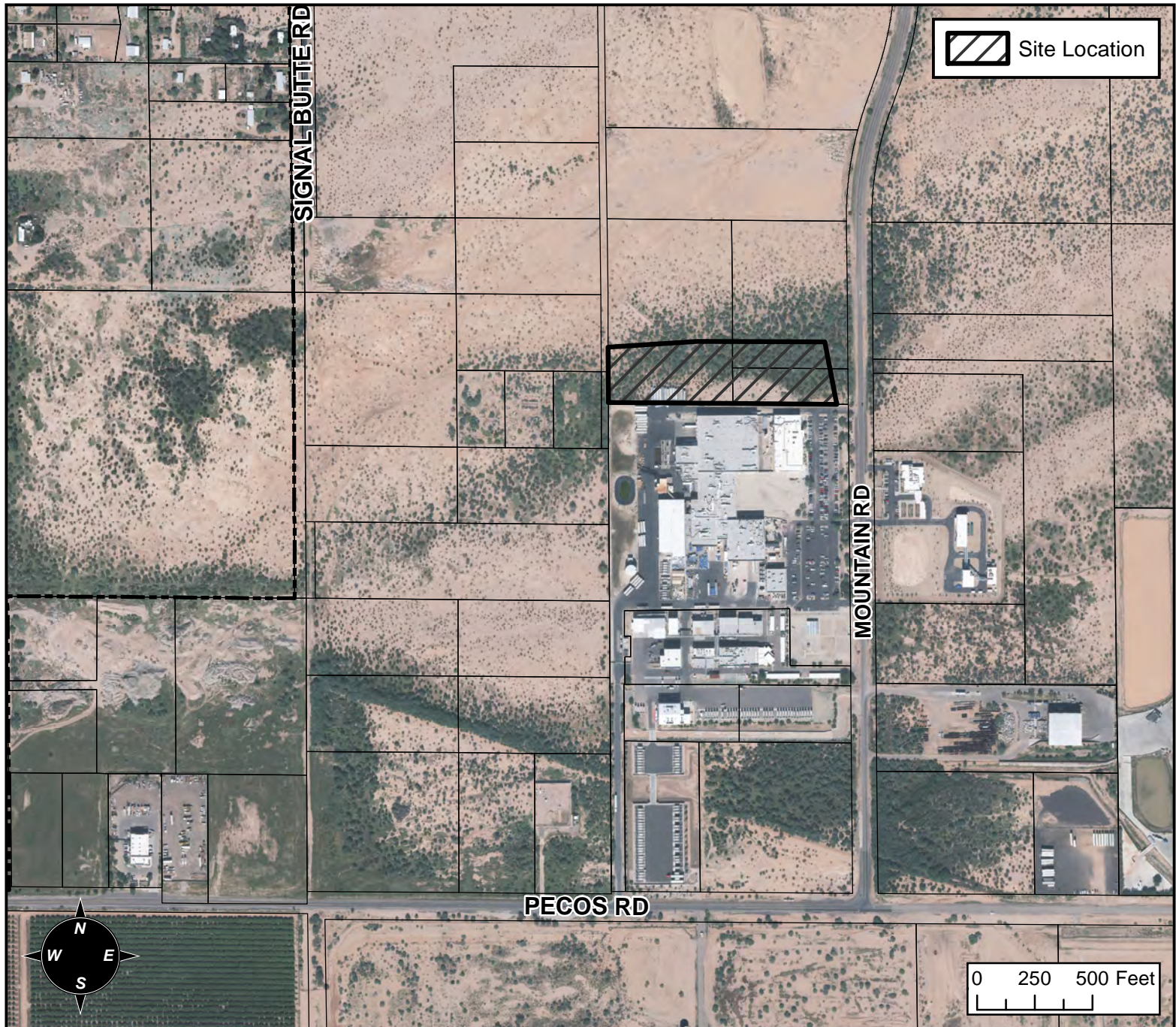


PLANNING AND ZONING VICINITY MAP: Z16-026



CASE DETAILS

CASE:

Z16-026

PRE-PLAT : ☐**PROJECT:**

ISOTAINER PARKING LOT

ADDRESS:

6400 TO 6500 BLOCKS OF S MOUNTAIN RD - (DISTRICT 6).

REQUEST:

REZONING FROM GI-AF-CUP TO HI-AF. THIS REQUEST WILL ALLOW HAZARDOUS MATERIAL USAGE ON THIS PORTION OF THE PROPERTY ASSOCIATED WITH THE EXISTING FUJIFILM ELECTRONIC MATERIALS FACILITY AT 6550 SOUTH MOUNTAIN ROAD SITE.