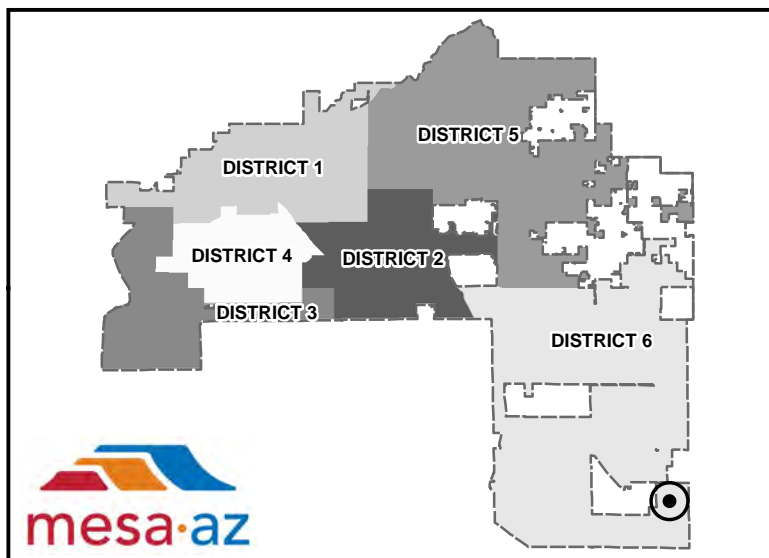
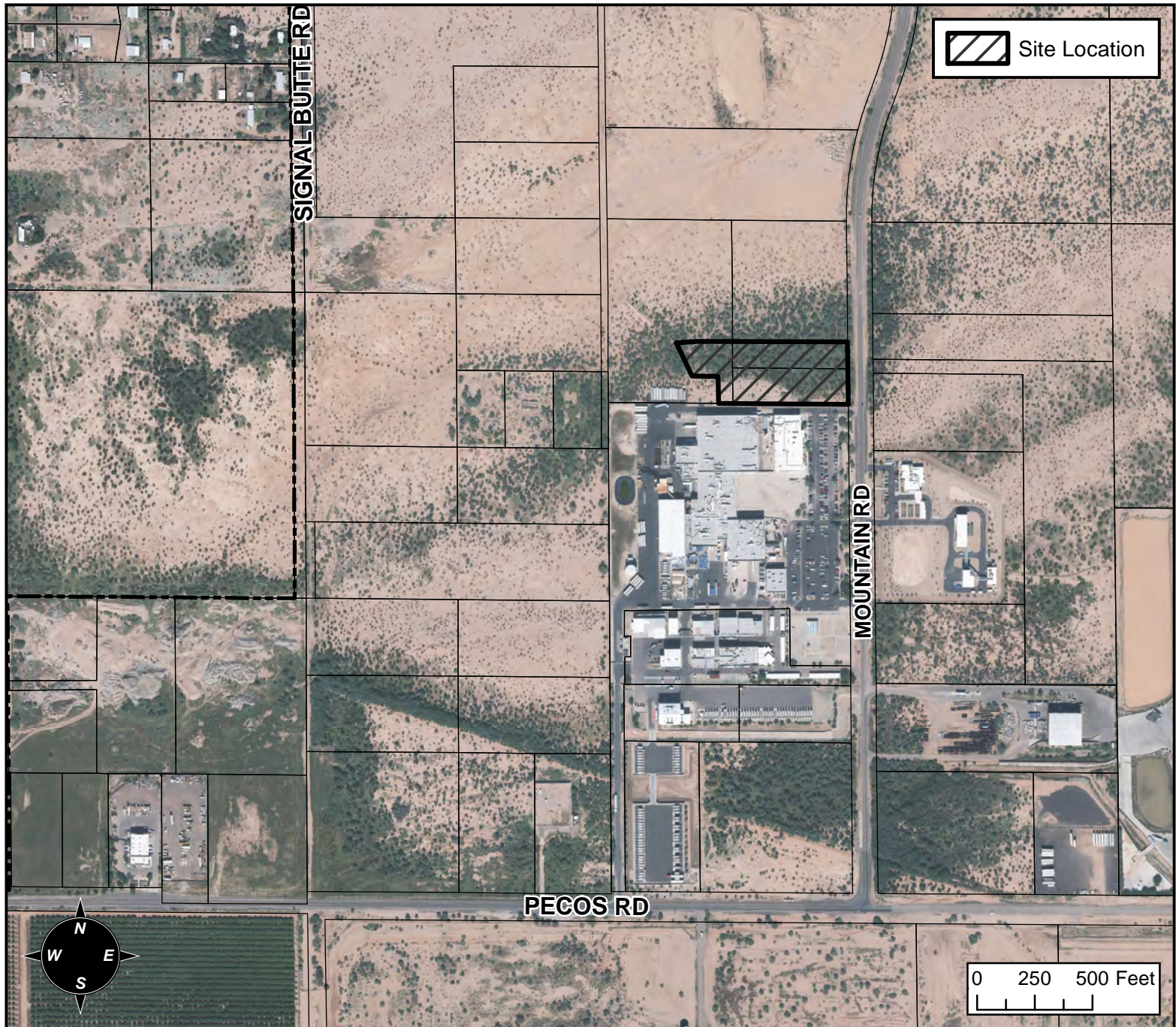


# PLANNING AND ZONING VICINITY MAP: Z16-025



## CASE DETAILS

**CASE:**

Z16-025

**PRE-PLAT :** ☐

**PROJECT:**

ISOTAINER PARKING LOT

**ADDRESS:**

6400 TO 6500 BLOCKS OF S MOUNTAIN RD - (DISTRICT 6).

**REQUEST:**

SITE PLAN REVIEW. THIS REQUEST WILL ALLOW DEVELOPMENT OF A PARKING AREA AND OUTSIDE STORAGE ASSOCIATED WITH THE EXISTING FUJIFILM ELECTRONIC MATERIALS FACILITY AT 6550 SOUTH MOUNTAIN ROAD.