

# Proposed Mesa Sports Complex

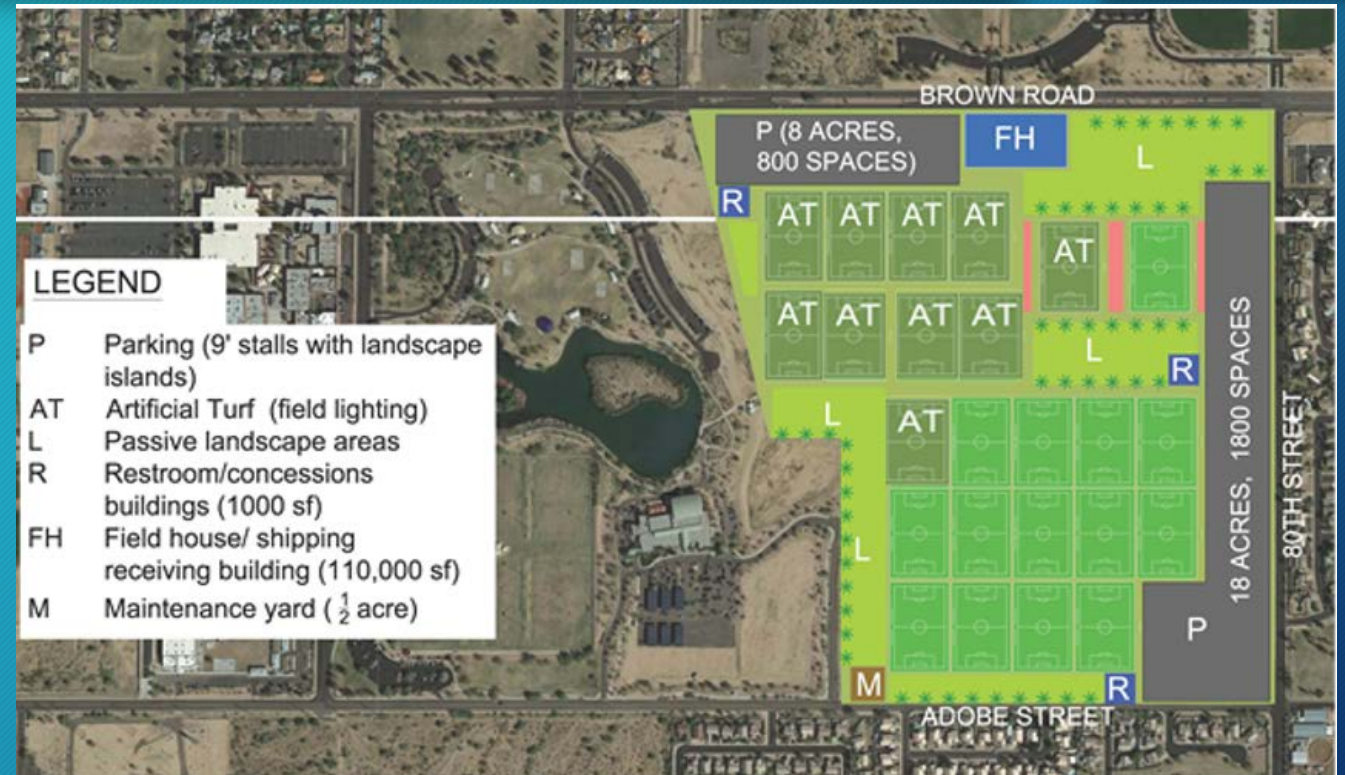
June 2, 2016



# Mesa Sports Complex Components



- Located at Brown Road and 80<sup>th</sup> Street
- 110,000 sf. Fieldhouse
- 10 Lighted Synthetic Turf Fields
  - 1 stadium field with flexible seating
- 14 Lighted Natural Grass Fields
  - 1 Stadium field with flexible seating
- On-site parking for 2,600+ vehicles
- On-site Concession Operations
- Restrooms/Locker rooms, meeting and office space





# Mesa Sports Complex Fields



- Field space provides opportunities for multiple sports:
  - Soccer, football, lacrosse, rugby, kickball, and more
- Synthetic turf fields provides practice space for local youth sports organizations
- Stadiums would accommodate high school championships, NCAA competitions, graduations, and more



# Mesa Sports Complex Fieldhouse



Fieldhouse becomes the largest indoor event space in Mesa:

- 12 basketball courts, 24 volleyball courts, 12 wrestling mats
- Dance competitions, Cheerleading, Martial Arts, Boxing and more
- Banquet and exhibit space





# Mesa Sports Complex Construction Budget



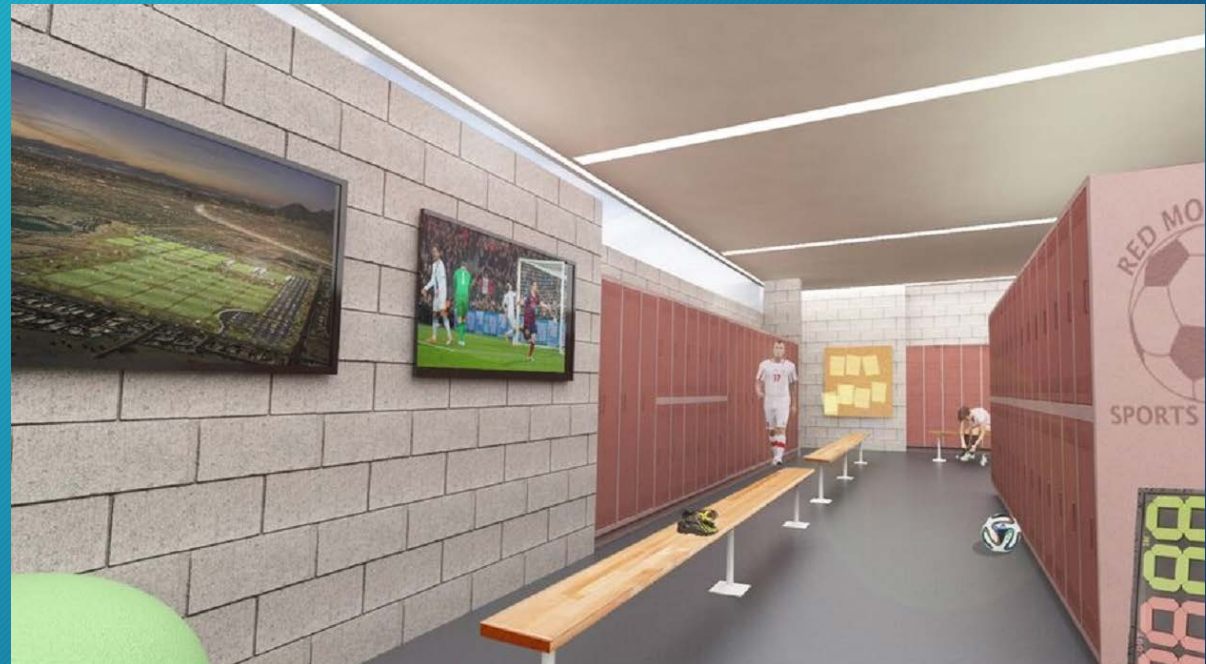
Field Construction	Preliminary Budget
10 Synthetic Turf and 14 Natural Grass Playing Fields	\$36,000,000
Fieldhouse Construction	Preliminary Budget
110,000 square foot fieldhouse	\$22,000,000
<b>TOTAL PROJECT COSTS</b>	<b>\$58,000,000</b>



# Capital Construction Financing

Capital construction costs would need to be financed through a secondary property tax.

- Estimated annual cost of \$18 per median household





# Mesa Sports Complex Operating Budget



	Preliminary Budget
Personnel	\$650,000
Utilities	\$830,000
Contractual Services	\$300,000
Marketing/Promotions	\$225,000
Commodities	\$270,000
Capital Reserve Fund	\$350,000
<b>TOTAL OPERATING BUDGET</b>	<b>\$2,625,000</b>



# Mesa Sports Complex Operations Revenue



- Operations will be funded by all revenues generated by the Mesa Sports Complex.
- Operating Budget Revenue Sources:
  - All revenues derived onsite
  - Induced Sales Tax
  - Additional bed tax revenue net of City obligations
  - Dedicated 1% bed tax
- Visit Mesa and Tourism Industry is recommending a 1% increase in bed tax to support the operations of the complex.



# Next Steps



If City Council desires to move forward, then the following items would need to be considered:

- Schedule upcoming Study Sessions for further discussions; and
- Finalize MOU with Visit Mesa detailing operations contributions.
- Consider the following resolutions at the June 20<sup>th</sup> City Council meeting:
  - A resolution asking voters for 613 Charter approval to build a sports complex costing more than \$1.5 million; and
  - A resolution asking voters for authorization to increase the bed tax by 1%; and
  - A resolution asking voters for authorization to issue a secondary property tax for \$58 million of capital construction cost.





QUESTIONS?

