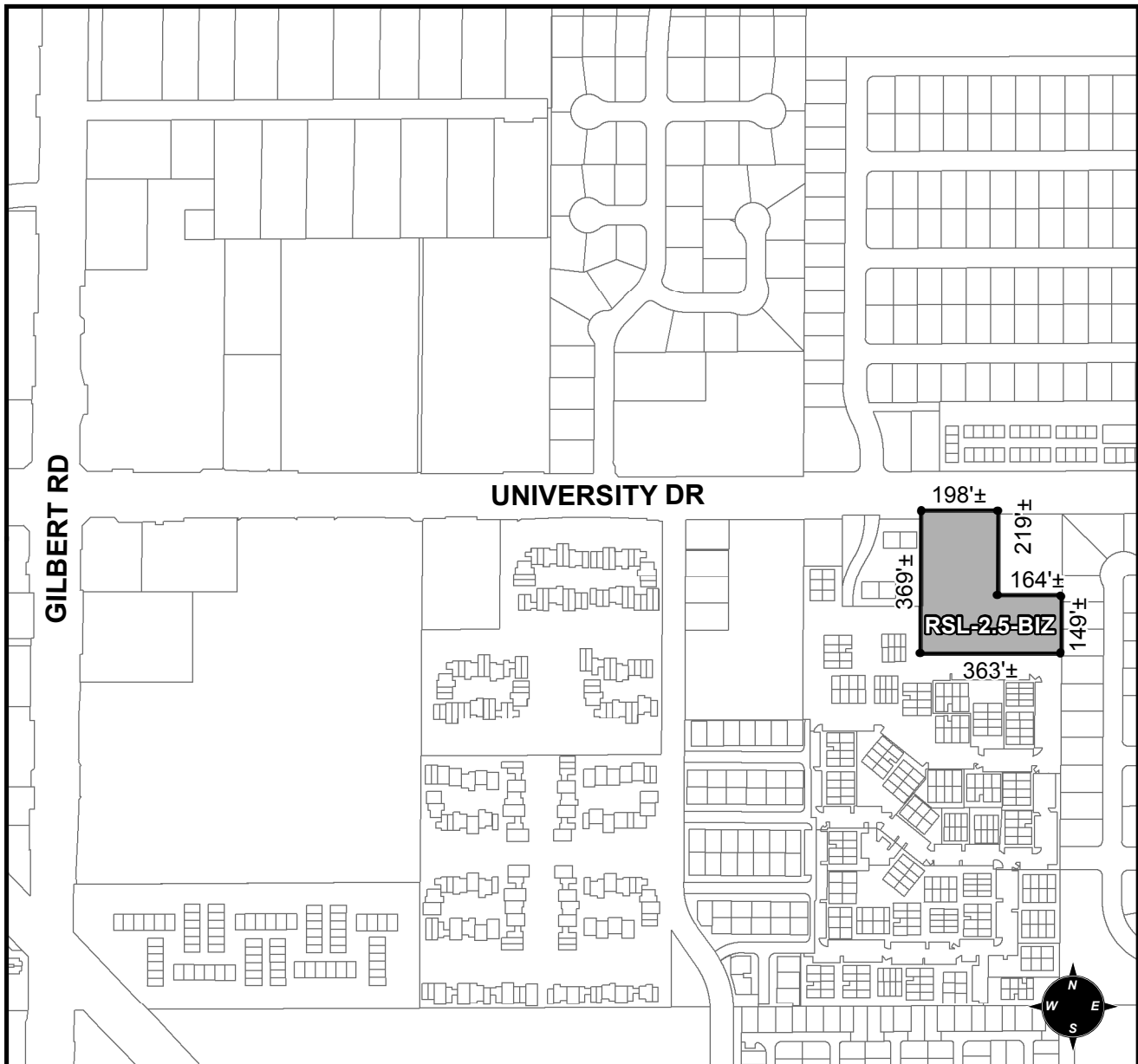




OFFICIAL SUPPLEMENTARY ZONING MAP AMENDING THE CITY OF MESA ZONING MAP



CASE: Z16-022
ACREAGE: 2.45±
REQUEST: REZONE FROM RS-6 TO RSL-2.5-BIZ

ORDINANCE: _____

Please be advised that the attached zoning changes were approved by the Mesa City Council on _____, 2016 by Ordinance # _____. If you have any questions concerning these changes, contact the City of Mesa Planning Division at 480-644-2385.

ATTEST: _____ **DATE:** _____

MAYOR

CITY CLERK