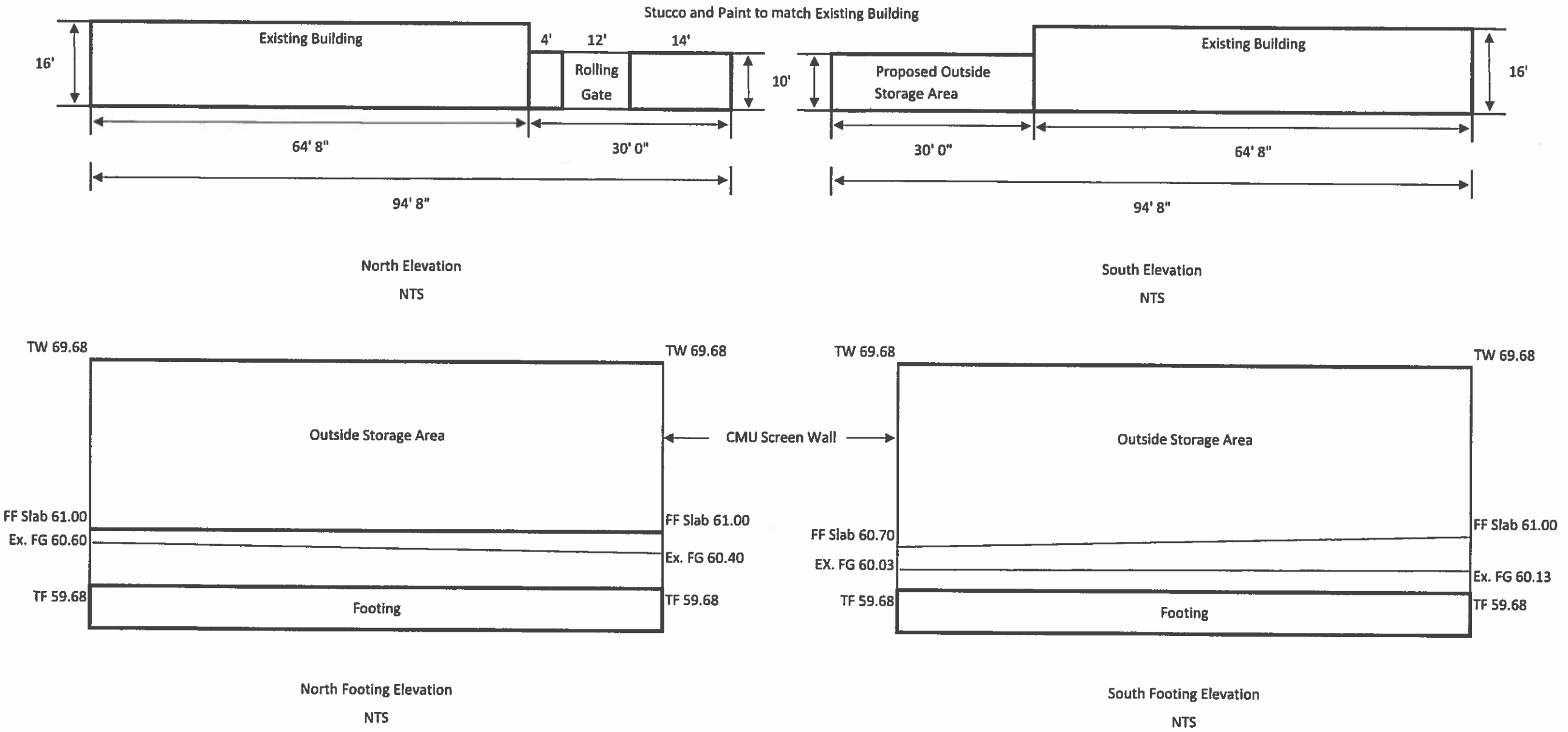
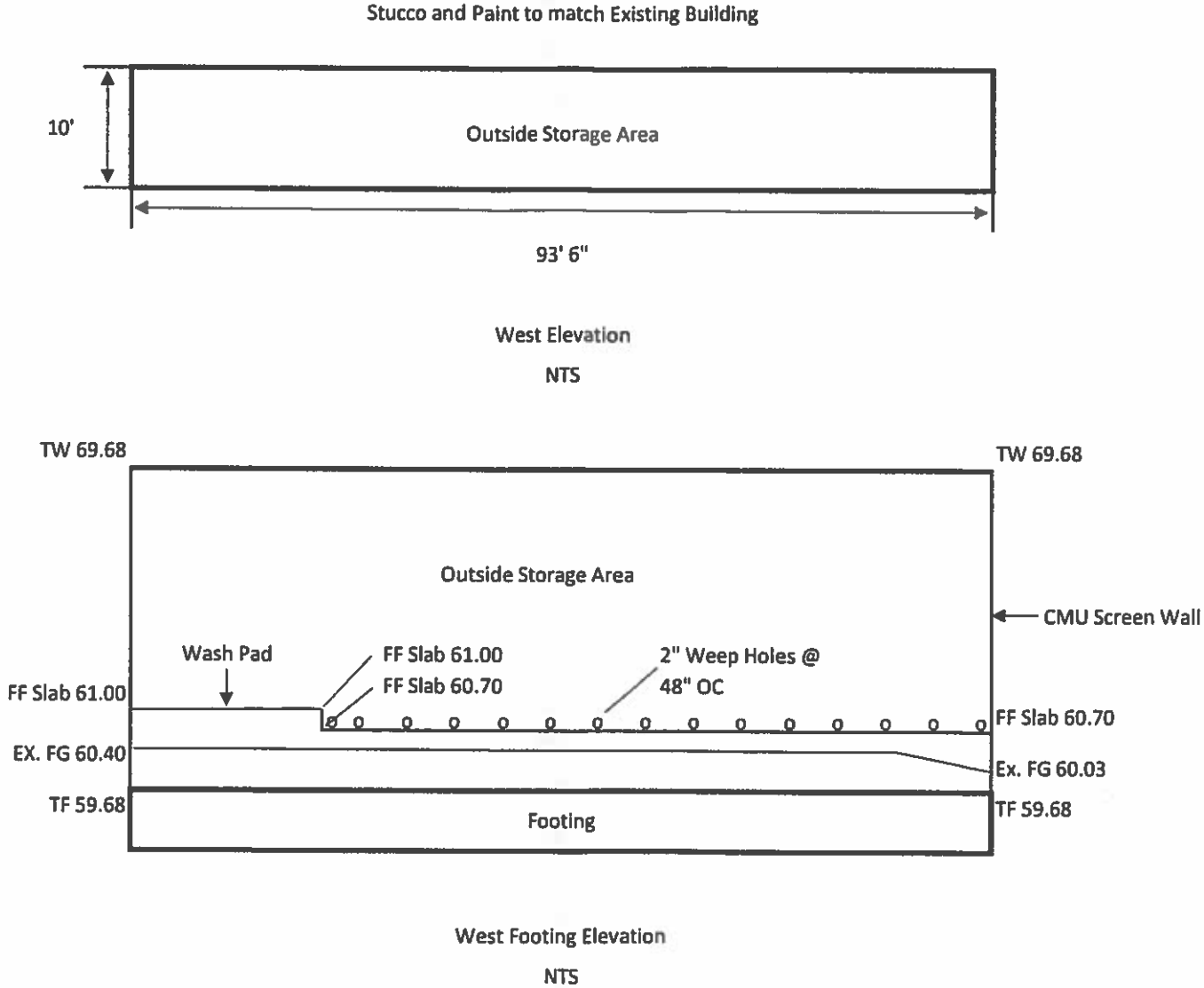
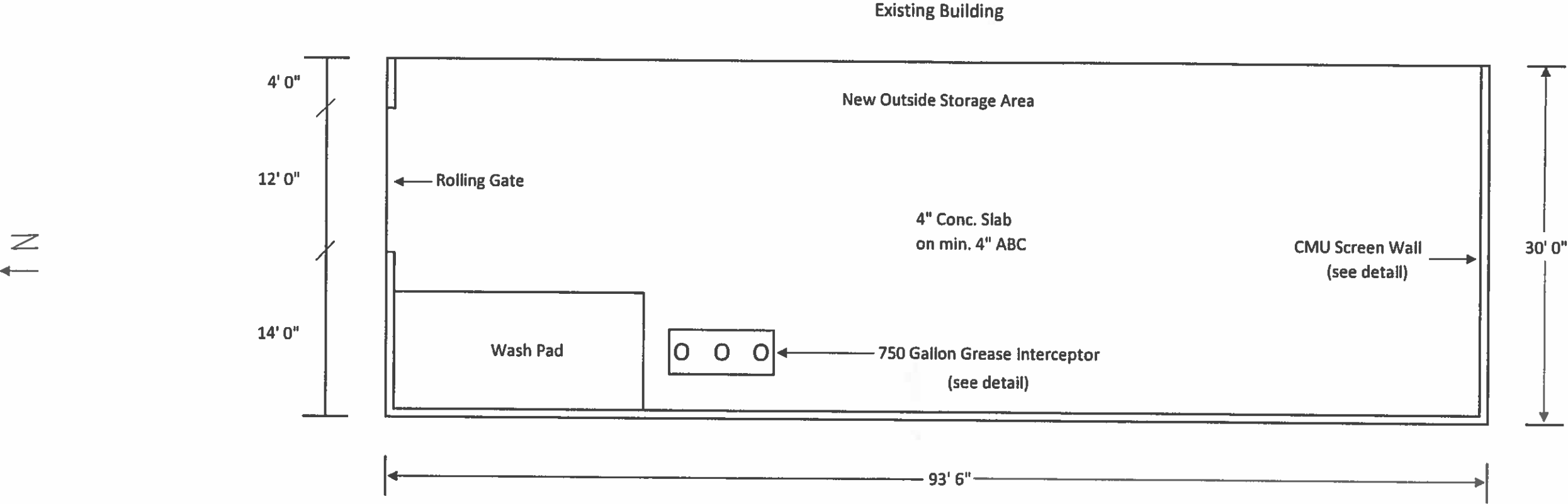


AEO Powersports
3512 E. Southern Ave.
Mesa, AZ. 85204



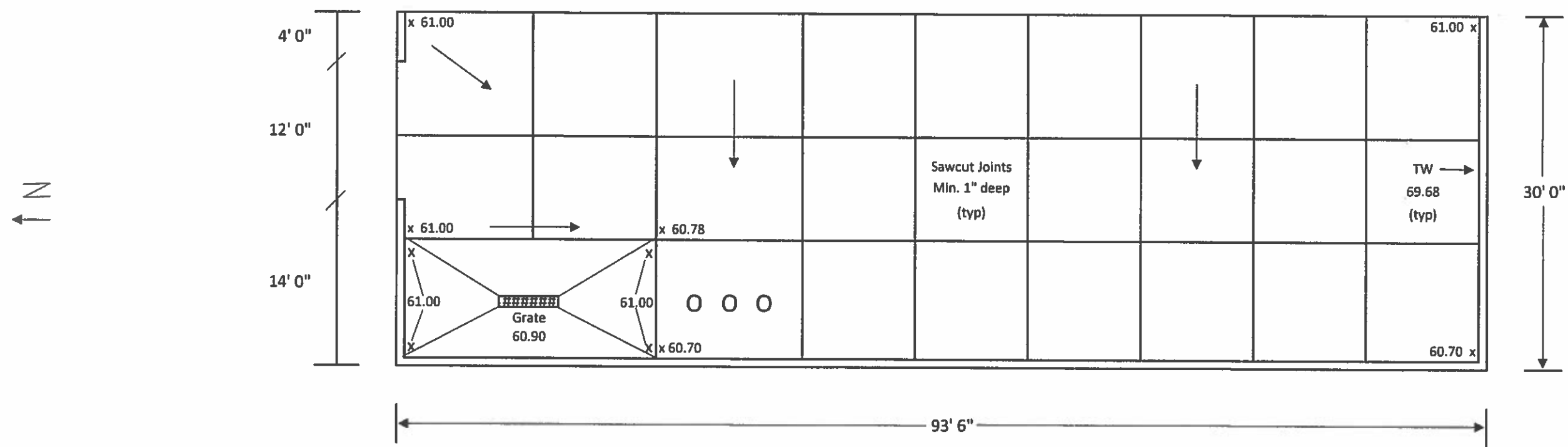
AEO Powersports
3512 E. Southern Ave.
Mesa, AZ. 85204



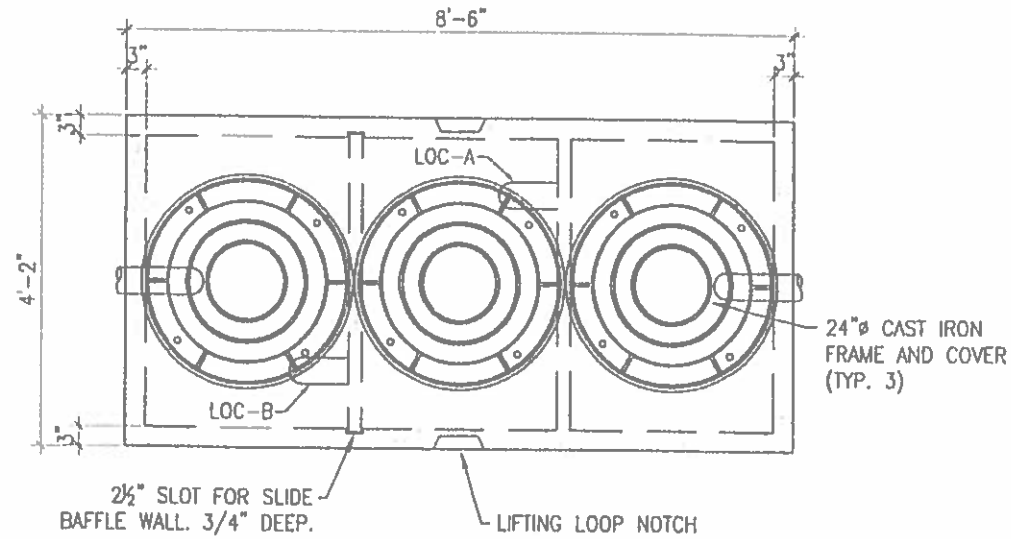


AEO Powersports
3512 E. Southern Ave.
Mesa, AZ. 85204

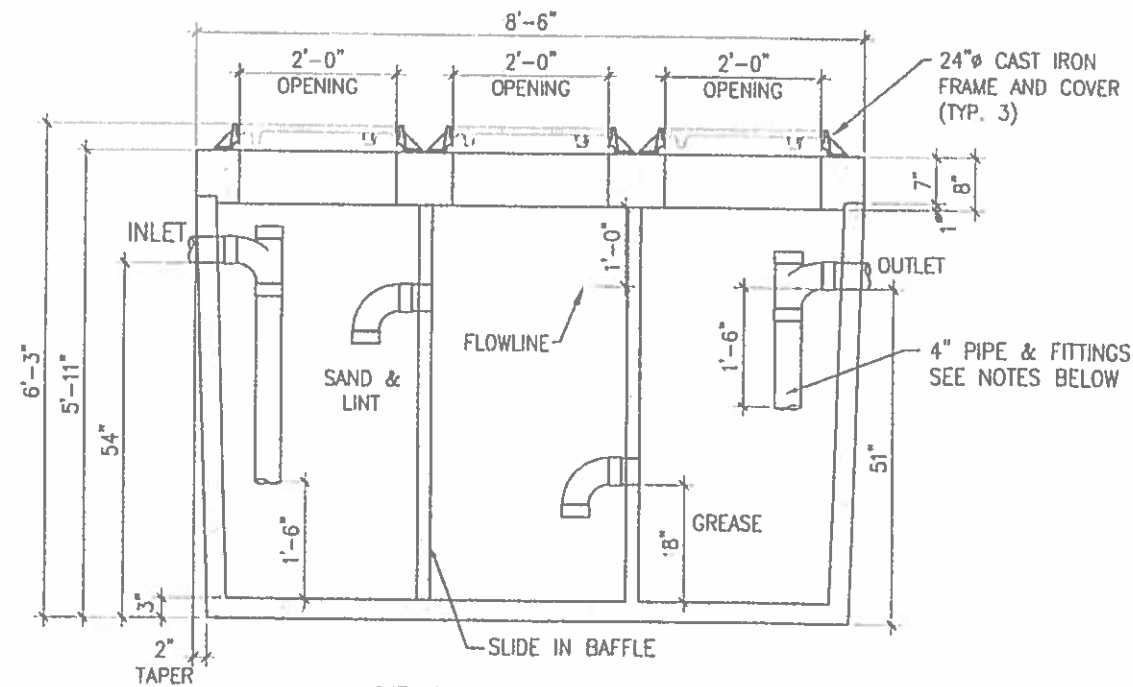
Existing Building
FF Elev. 1261.00



IWI750
750 GALLON WASTE
INTERCEPTOR TANK
 STANDARD DETAIL



PLAN VIEW



SECTION A-A VIEW

OPERATING CAPACITY: 750 GALLONS.

DESIGN LOAD: H-20 TRAFFIC WITH DRY SOIL CONDITIONS (WATER LEVEL BELOW TANK) AND 1 TO 6 FEET EARTH COVER.

BEDDING NOTE: SUITABLE SUB-BASE BEDDED WITH GRANULAR MATERIAL SHALL BE PREPARED TO HANDLE ANTICIPATED LOADS

INLET / OUTLET SANITARY TEES PROVIDED BY JPC, INSTALLED BY CONTRACTOR

FOR COMPLETE DESIGN AND PRODUCT INFORMATION CONTACT JENSEN PRECAST.

MATERIAL SPECIFICATIONS:

CONCRETE - 28 DAY MINIMUM COMPRESSIVE STRENGTH AT 4000 PSI

JENSEN
 PRECAST

1/21/2013
 IWI750 CATALOG.DWG
 ©2013

Jensen Precast reserves the right to make changes to product design and/or dimensions without notice. Please contact Jensen Precast whenever necessary for confirmation or advice on product design.

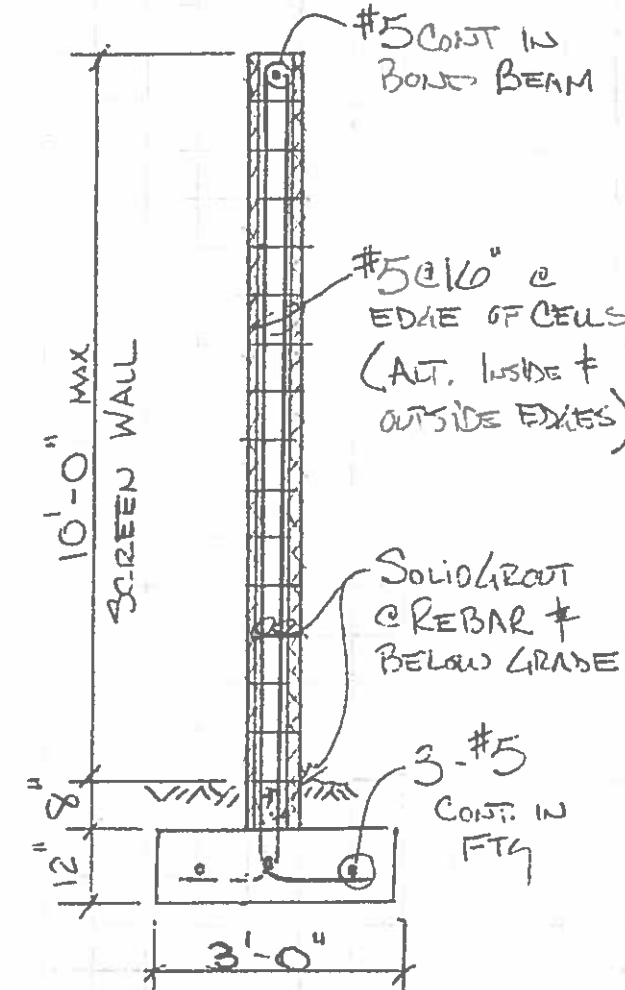


CMU Screen Wall for: 10 foot height, 2012 IBC, site plan by others.
Owner: AEO Powersports, 3512 E. Southern Ave., Mesa, AZ, 85204

pg 1 of 1

GENERAL STRUCTURAL NOTES

1. This design is for a site screen wall. The design is per 2012 IBC. Wind Load controls. 105 mph used. Lateral load on stem is 14.87 psf.
2. No soils report was noted for property. Design uses allowable bearing pressure of 1500 psf (IBC min), active equiv fluid press of 35 psf/ft, passive press of 150 psf/ft, soil density of 110 pcf, coeff of friction of 0.25.
3. NO special inspection required. NO solid grouting of CMU required. All cells below grade and cells with reinforcing shall be grouted solid with 2000 psi grout.
4. Reinforcing steel shall be 60 grade. CMU shall be medium density. Use horizontal ladder reinforcing, 9ga. at 16" o.c. spacing.
5. All foundation concrete shall have a minimum compressive strength of 2500 psi in 28 days. Foundations shall bear a minimum of 18" below existing grade and on engineered fill or undisturbed soil.
6. Provide CMU control joints at 20' maximum spacing. Top bond beam reinforcing can continue through joint if bond break is applied at one side of joint.
7. CMU reinforcing shall be #5 at 16" spacing, placed at the edge of the cells, alternating inside and outside edges. This section provides #5 at 32" at edge of cells with no special inspection, resulting in a stress ratio of $0.77 < 1.0$. Section Sliding ratio is $2.91 > 1.5$, Overturning ratio is $1.87 > 1.5$.
8. #5 at 16" shall continue into footing as shown and alternating bends. Provide 3 #5 continuous in bottom of footing. Typical concrete and reinforcing clearances shall be per ACI code.
9. CMU cells (without reinforcing) can be turned/rotated to provide drainage openings at grade course.



TYPICAL SECTION

3/8" = 1'-0"



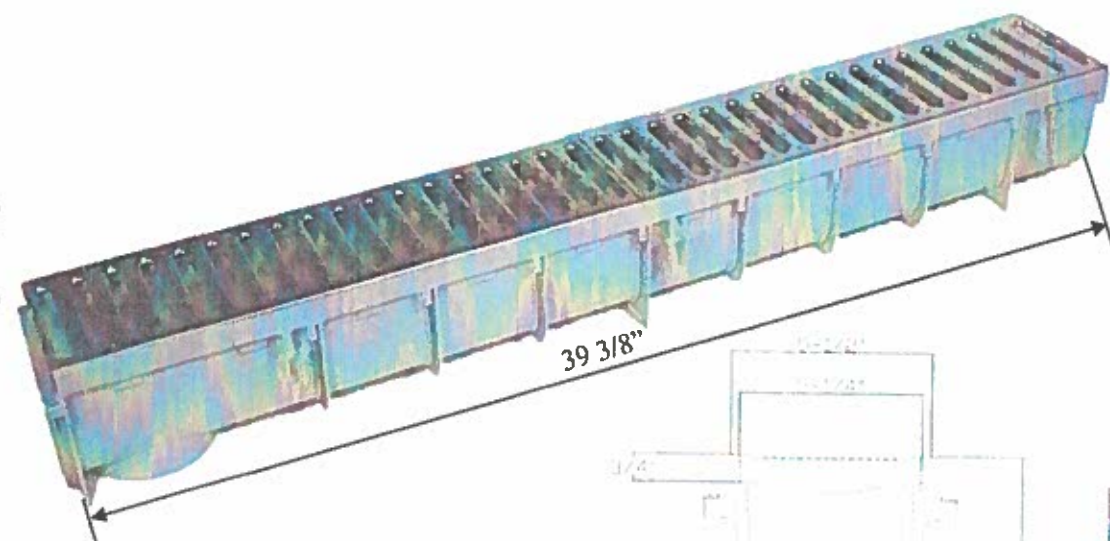
EXP. 6-30-16



NDS
WE PUT WATER IN ITS PLACE

TECHNICAL SPECIFICATIONS

5 Inch Pro Series Drain Kit With Metal Grate



SIDE REBAR CLIP
DETAIL



GRATE SLOT
DETAIL



CROSS-SECTION
DETAIL



Part #: 864GMTL (Includes 2 Galvanized Steel Grates, #800-Channel (1 qty.), #813-End Outlet (1 qty.), and #812-End Cap (1 qty.))

Material: Channel (Polyolefin) Grates (Galvanized Steel)

Color: Light Gray / Galvanized Steel

Fits: 3" (Hub) and 4" (Spigot) Sewer/Drain Pipe

Rebar tie clips for easier installation: Fits #4 Rebar

Grate Opening: 0.45" x 4"

Open Surface Area: 19.32 sq. inch per linear ft.

Head Pressure / Flow Rate:

Head (inches) - Max Flow

1" = 83.58 GPM per foot

0.5" = 59.10 GPM per foot

Weight per unit: 7.70 lbs.

Screw: #829 Stainless Steel Screw, 4 per grate.

UV Inhibitors



Class B

- Loads of 61-175 psi.
- Recommended for medium-duty pneumatic tire traffic, autos and light trucks at speeds less than 20 m.p.h.

Note: Some installations may require a concrete collar to meet load rating. Loads are based on encasing product in concrete. Product must be installed using NDS instructions.

ADA Compliance

NDS provides a wide selection of grates that are compliant with the Americans with Disabilities Act (ADA) Accessibility Guidelines for Buildings and Facilities (Section 4.01.3 specifies that grates shall have a maximum opening of 1/2" (13 mm) in any direction).

We are pleased to provide grates that comply with these requirements, and for no additional cost, be tested from accessing the area safely and efficiently.

To see if a grate is ADA compliant, please check the listing for the product in the NDS Drainage Catalog; products that meet these requirements are marked "ADA compliant".

For more information about ADA compliance and NDS products, please contact your NDS representative.

ADA COMPLIANT



NDS
WE PUT WATER IN ITS PLACE

NDS, INC.

851 NORTH HARVARD AVE.

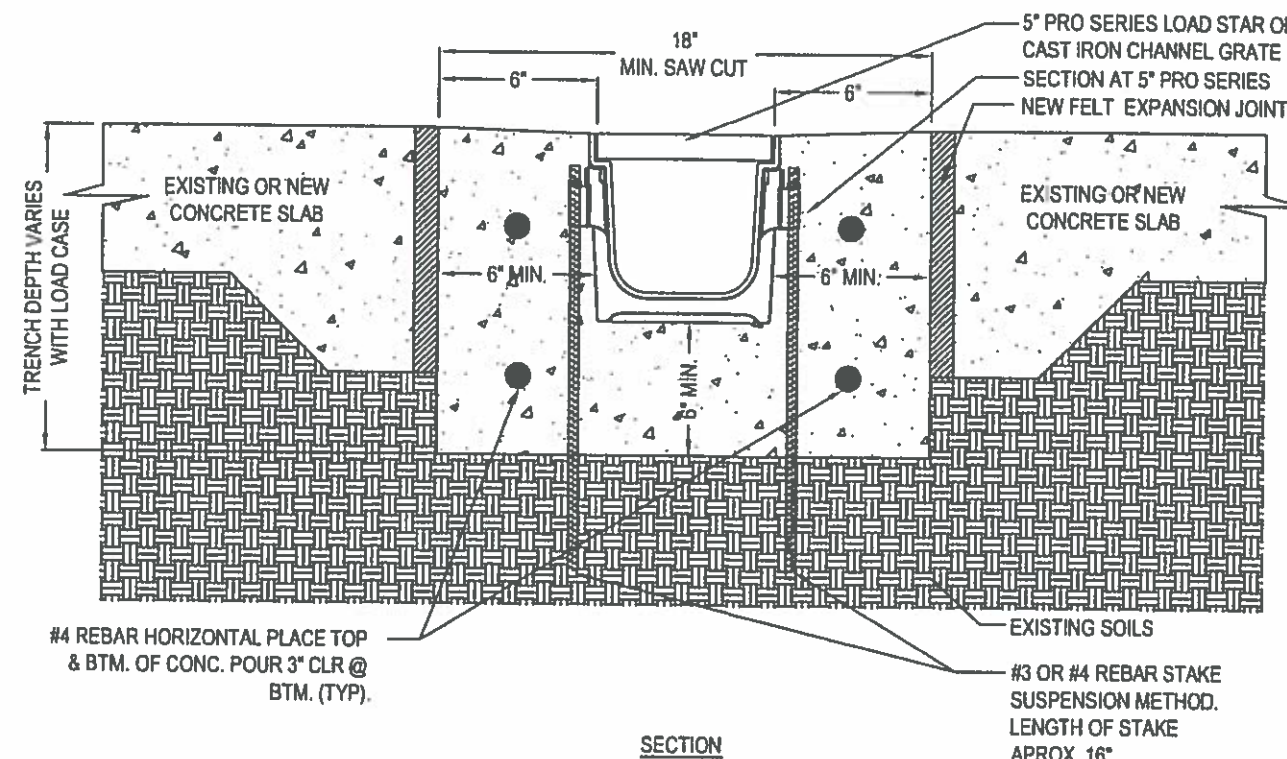
LINDSAY, CA 93247

TOLL FREE: 1-800-726-1994

PHONE: (559) 562-9888

FAX: (559) 562-4488

www.ndspro.com



NOTES:

1. CHANNELS TO BE INSTALLED WITH GRATE. GRATE TO BE PROTECTED FROM CONCRETE POUR
2. INSTALLATION TO BE COMPLETED IN ACCORDANCE WITH MANUFACTURER'S SPECIFICATIONS.
3. DO NOT SCALE DRAWING.
4. THIS DRAWING IS INTENDED FOR USE BY ARCHITECTS, ENGINEERS, CONTRACTORS, CONSULTANTS AND DESIGN PROFESSIONALS FOR PLANNING PURPOSES ONLY.
5. ALL INFORMATION CONTAINED HEREIN WAS CURRENT AT THE TIME OF DEVELOPMENT BUT MUST BE REVIEWED AND APPROVED BY THE PRODUCT MANUFACTURER TO BE CONSIDERED ACCURATE.



PRO SERIES CHANNEL DRAIN SYSTEM

5" PRO SERIES INSTALLATION DETAIL - LOAD CLASS 'C' - 6" ENCASEMENT REBAR SUSPENSION

REVISION DATE 3-5-2015

Sheet 10 of 10

851 N. Harvard Avenue
Lindsay, CA 93247
800-726-1994



Visit ndspro.com for specs,
detail drawings, and case studies



NDS
WE PUT WATER IN ITS PLACE