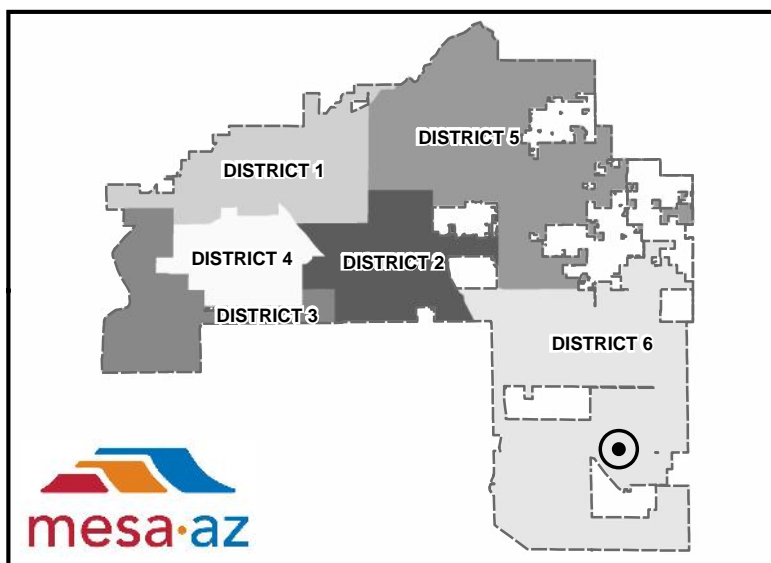
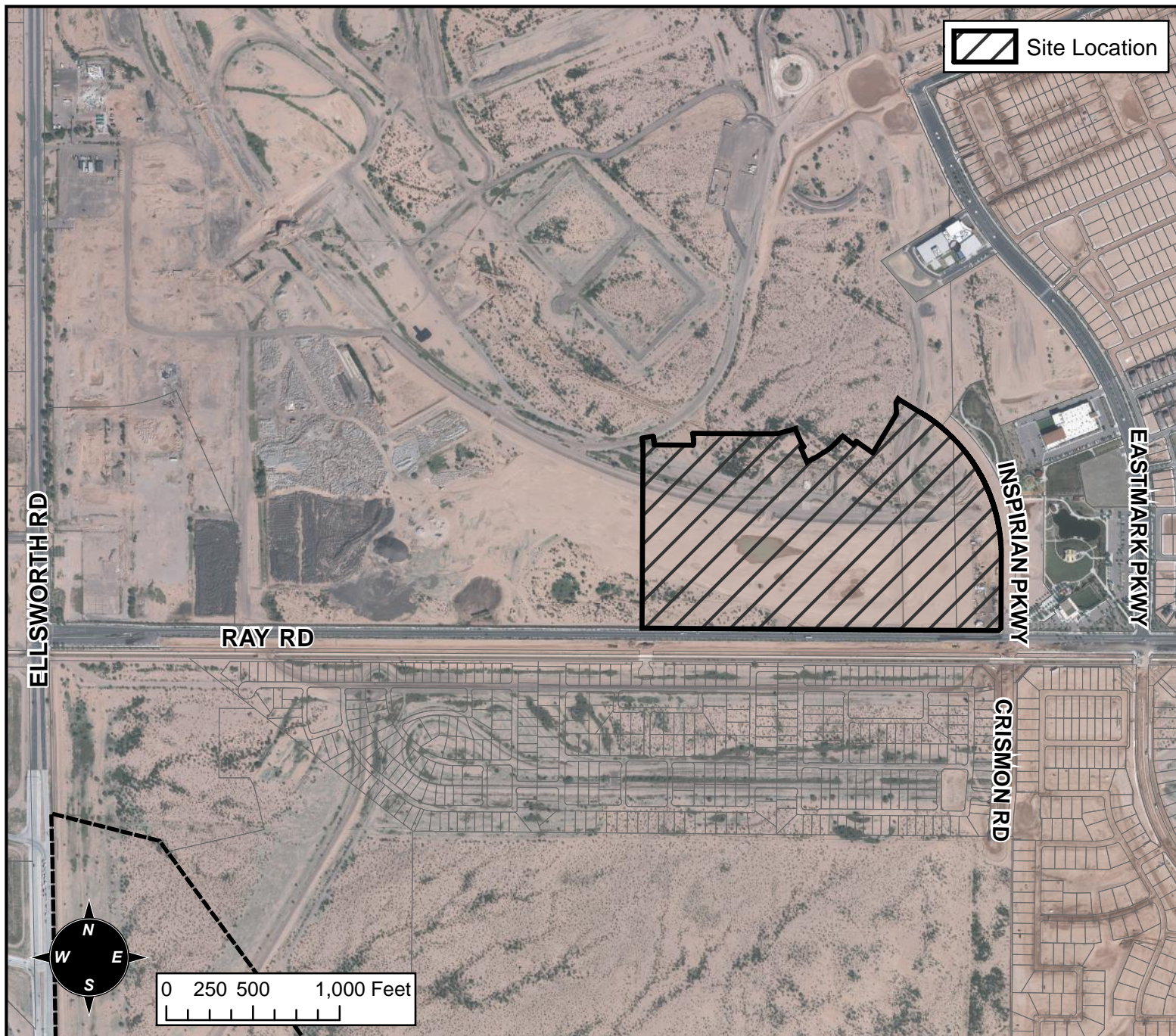


# FINAL PLAT VICINITY MAP



## FINAL PLAT DETAIL

### PROJECT:

EASTMARK DU 3/4 PARCELS 3/4-1 THRU 3/4-3

### LANGUAGE:

"EASTMARK DEVELOPMENT UNIT 3/4 PARCELS 3/4-1 THRU 3/4-3"- (DISTRICT 6) THE 9700 THROUGH 10000 BLOCKS OF EAST RAY ROAD (NORTH SIDE) LOCATED EAST OF ELLSWORTH ROAD AND NORTH OF RAY ROAD. 251 PC DISTRICT - RESIDENTIAL LOTS. (51.4± AC.). DMB MESA PROVING GROUNDS, LLC, OWNER; DANIEL HEMKEN, P.E., HOSKIN RYAN CONSULTANTS, INC., ENGINEER