

**LEGAL DESCRIPTION
WAYPOINT II
P.U.E. ABANDONMENT
JOB NO. 13-080**

EXHIBIT "A"

A PORTION OF AN EXISTING PUBLIC UTILITY EASEMENT (P.U.E.), ACCORDING TO DOCUMENT NO. 2008-0352905, RECORDS OF MARICOPA COUNTY, ARIZONA, LOCATED IN THE NORTHEAST QUARTER OF SECTION 17, TOWNSHIP 1 NORTH, RANGE 5 EAST OF THE GILA AND SALT RIVER MERIDIAN, MARICOPA COUNTY, ARIZONA, BEING MORE PARTICULARLY DESCRIBED AS FOLLOWS:

COMMENCING AT A FOUND PK NAIL WITH LS TAG 12213 AT THE WESTERNMOST PROPERTY CORNER OF LOT 1, ACCORDING TO BOOK 1081 OF MAPS, PAGE 30, RECORDS OF MARICOPA COUNTY, ARIZONA, FROM WHICH A FOUND PK NAIL WITH LS TAG 12213 AT THE SOUTHERNMOST PROPERTY CORNER OF SAID LOT 1 BEARS SOUTH 45 DEGREES 35 MINUTES 20 SECONDS EAST (BASIS OF BEARING), A DISTANCE OF 235.73 FEET;

THENCE SOUTH 13 DEGREES 38 MINUTES 24 SECONDS EAST, A DISTANCE OF 198.43 FEET TO THE **POINT OF BEGINNING** OF THE ABANDONMENT HEREIN DESCRIBED;

THENCE SOUTH 45 DEGREES 35 MINUTES 20 SECONDS EAST, A DISTANCE OF 57.35 FEET;

THENCE NORTH 44 DEGREES 24 MINUTES 40 SECONDS EAST, A DISTANCE OF 54.32 FEET;

THENCE SOUTH 45 DEGREES 35 MINUTES 20 SECONDS EAST, A DISTANCE OF 20.00 FEET;

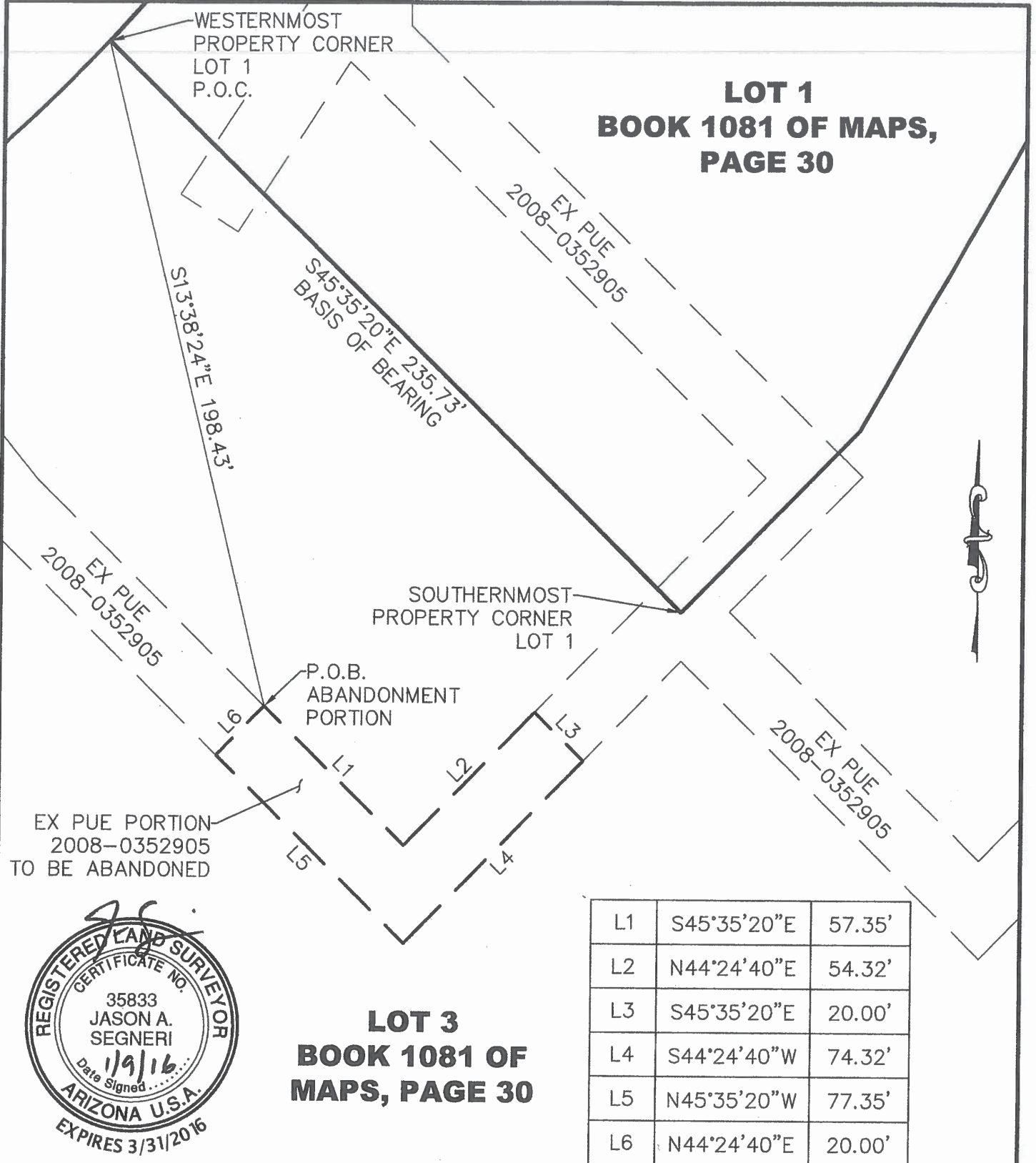
THENCE SOUTH 44 DEGREES 24 MINUTES 40 SECONDS WEST, A DISTANCE OF 74.32 FEET;

THENCE NORTH 45 DEGREES 35 MINUTES 20 SECONDS WEST, A DISTANCE OF 77.35 FEET;

THENCE NORTH 44 DEGREES 24 MINUTES 40 SECONDS EAST, A DISTANCE OF 20.00 FEET TO THE **POINT OF BEGINNING** OF THE ABANDONMENT HEREIN DESCRIBED.



**LOT 1
BOOK 1081 OF MAPS,
PAGE 30**



SIG
**SURVEY INNOVATION
GROUP, INC**

**WAYPOINT II EXISTING P.U.E.
ABANDONMENT
MESA, ARIZONA**

Ph (480) 922 0780 **Land Surveying Services** Fx (480) 922 0781
7301 EAST EVANS ROAD, SCOTTSDALE, AZ 85260

JOB # 13-080	DWG: 13-080 PUE ABAN	DATE: 1/9/16
SCALE: NTS	DRAWN: JAS	CHK: RMH
		SHEET: 1 OF 1