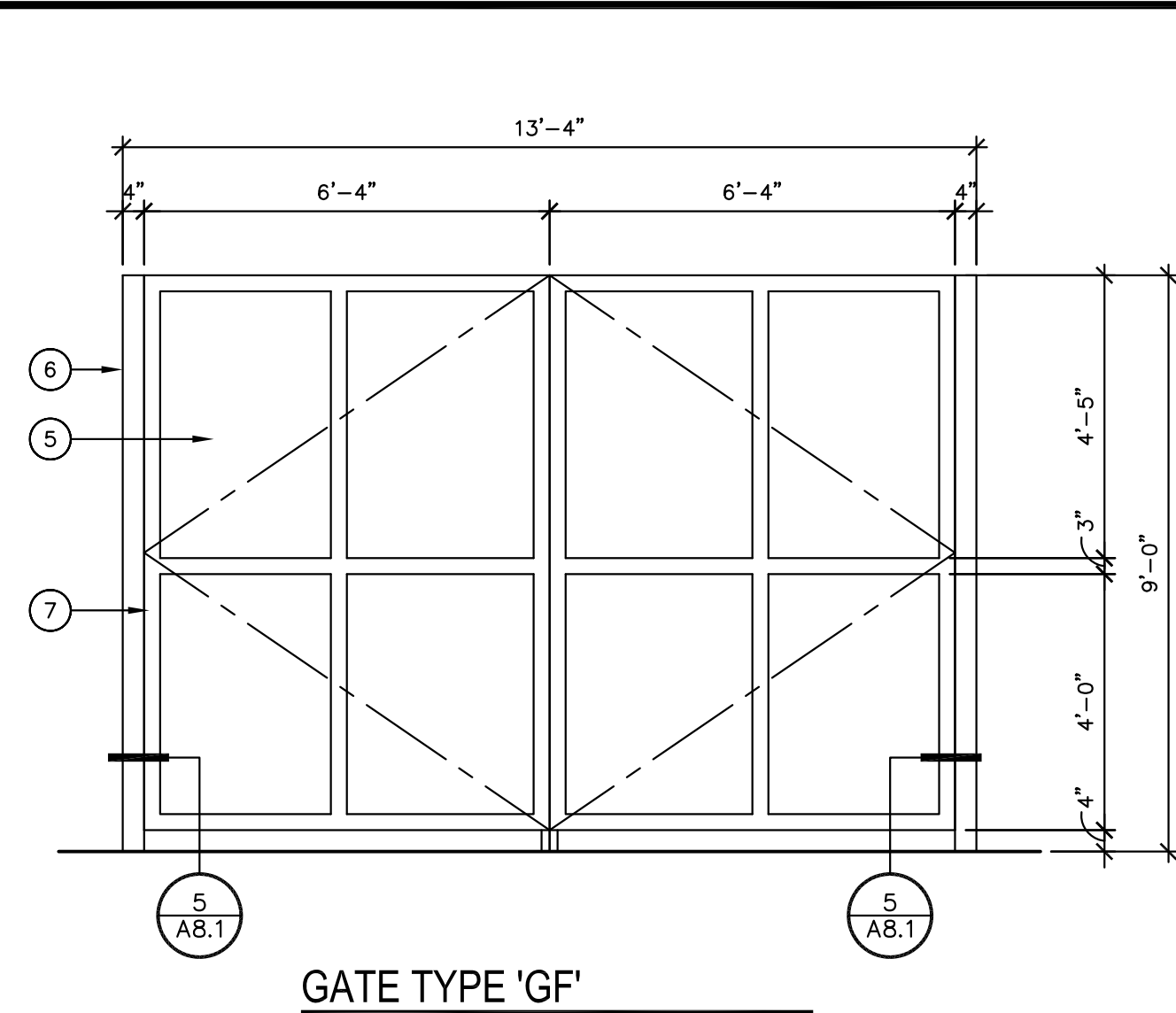
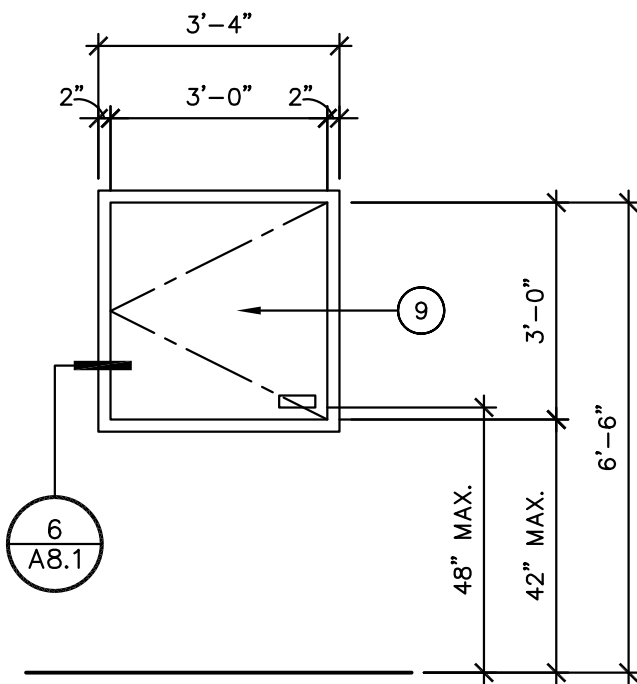


5 TRASH ENCLOSURE GATE DETAIL

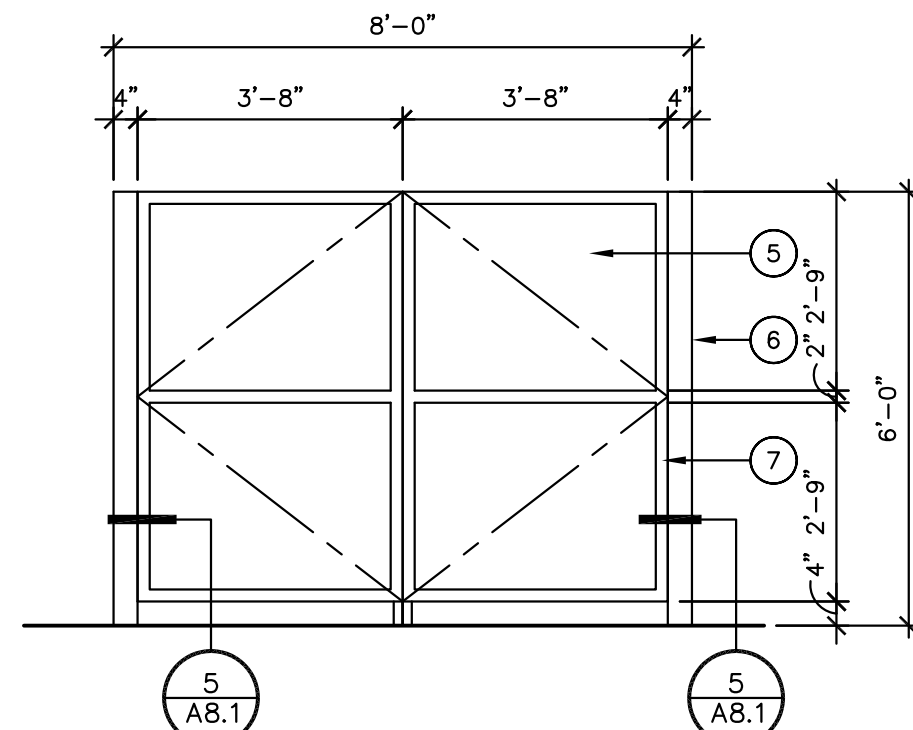
3" = 1'-0"



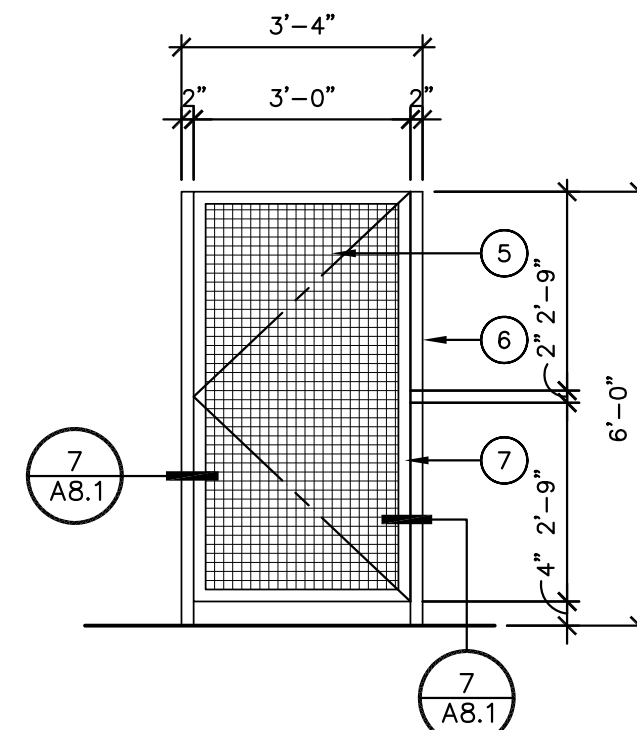
GATE TYPE 'GG'



GATE TYPE 'GH'



GATE TYPE 'GI'



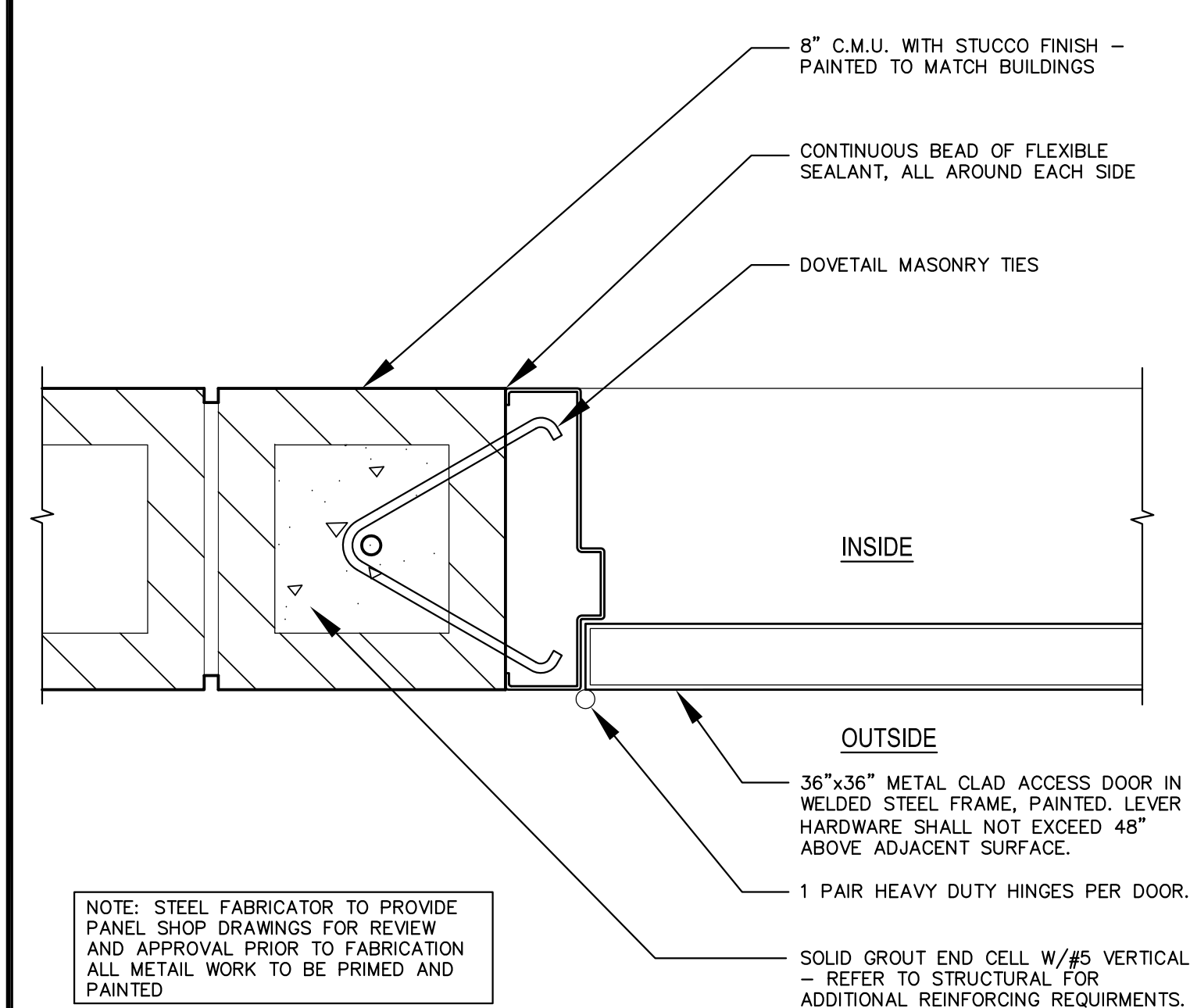
ELEVATION KEY NOTES: #

1. HSS 3"x 3"x 3/16" FRAME, PAINTED
2. SQUARE WEAVE WIRE MESH, PLAIN STEEL COLD ROLLED, 1/2" SQUARE OPENING, 0.120 WIRE DIAMETER, WELD TO ANGLE FRAME
3. 1 1/2"x 1 1/2"x 1/8" STEEL ANGLE, WELD TO TUBE STEEL FRAME.
4. 2"x 2"x 3/16" TUBE STEEL GATE FRAME.
5. 22 GAUGE SHEET METAL BACKING, SECURED TO TUBE STEEL FRAME AND INTERMEDIATE SUPPORTS.
6. HSS 4"x 6"x 1/4" JAMB POST, PAINTED
7. HSS 2"x 2"x 3/16" GATE FRAME, PAINTED
8. HSS 2"x 4"x 3/16" JAMB POST, PAINTED
9. 36"x36" METAL CLAD DOOR IN WELDED STEEL FRAME, PAINTED, LEVER TYPE HARDWARE SHALL NOT EXCEED 48" ABOVE ADJACENT SURFACE. PROVIDE SELF CLOSING DEVICE.
10. METER PACK LOCATION, REFER TO ELECTRICAL PLANS FOR EXACT LOCATION, CONFIGURATION AND SPECIFICATIONS. PAINT TO MATCH SURROUNDING BUILDING COLOR.

NOTE: ALL METAL WORK TO BE PRIMED AND PAINTED TO MATCH BUILDING

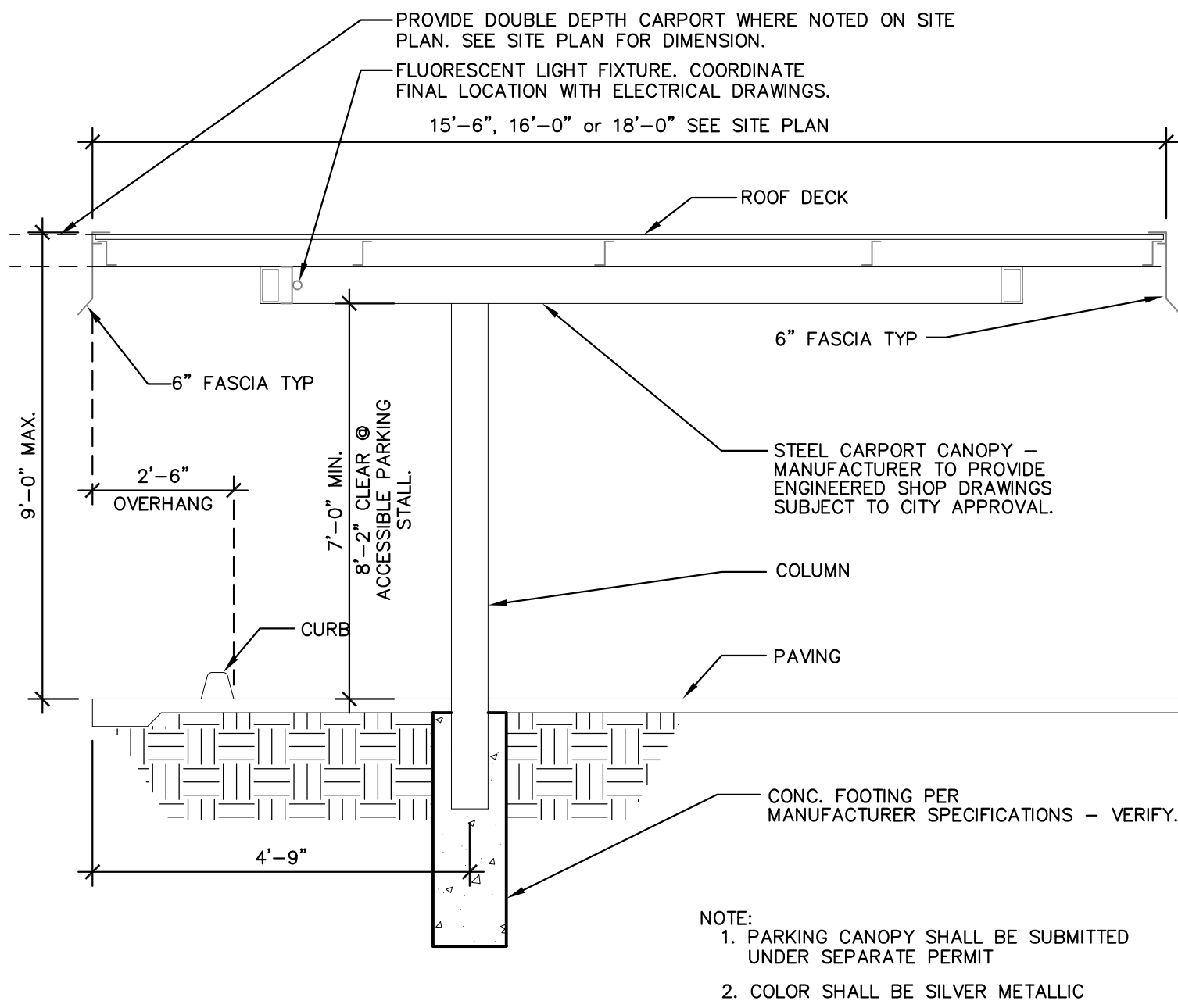
3 TRASH ENCLOSURE GATE ELEVATIONS

3/8" = 1'-0"



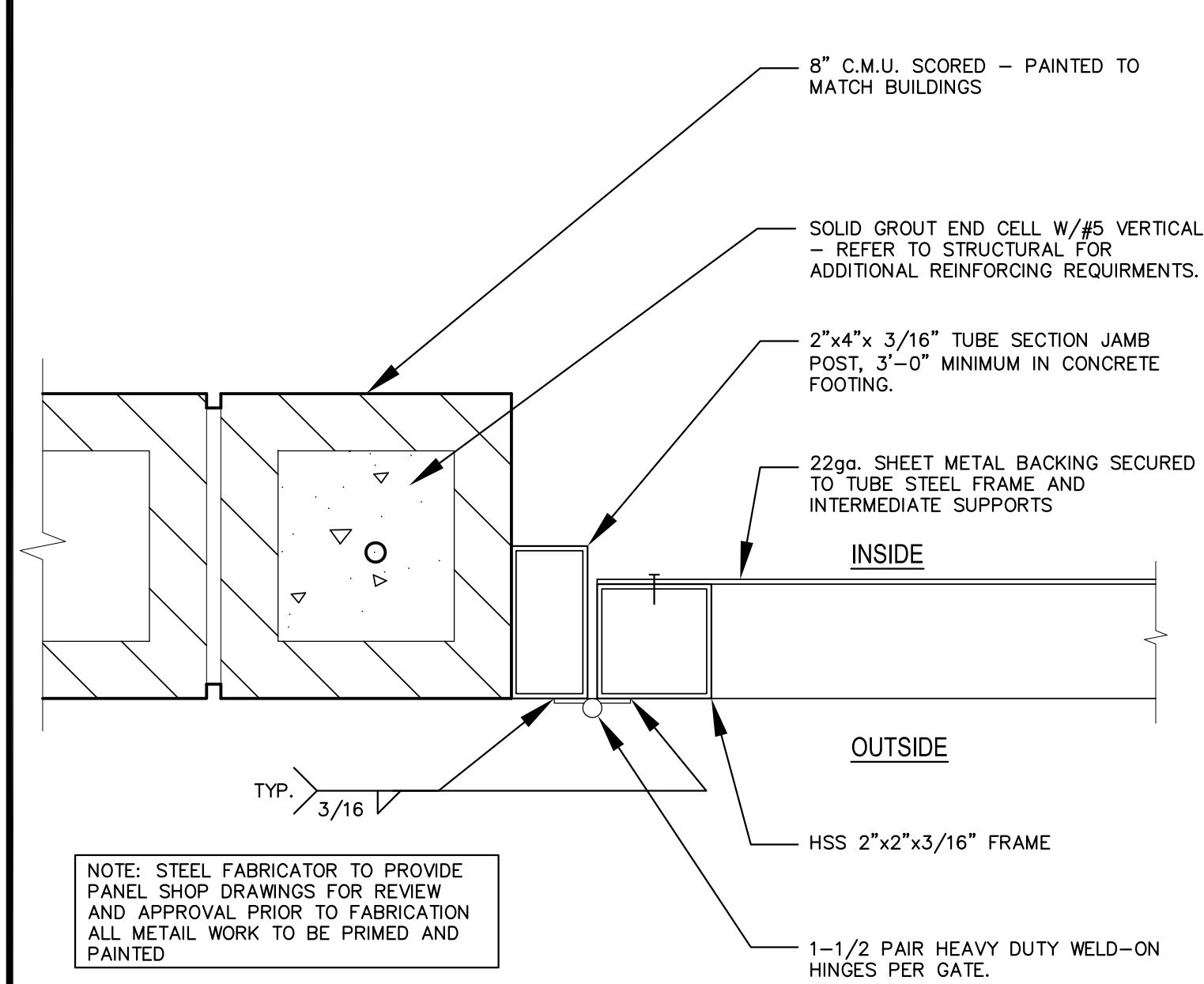
6 TRASH ENCLOSURE GATE DETAIL

3" = 1'-0"



4 PARKING CANOPY

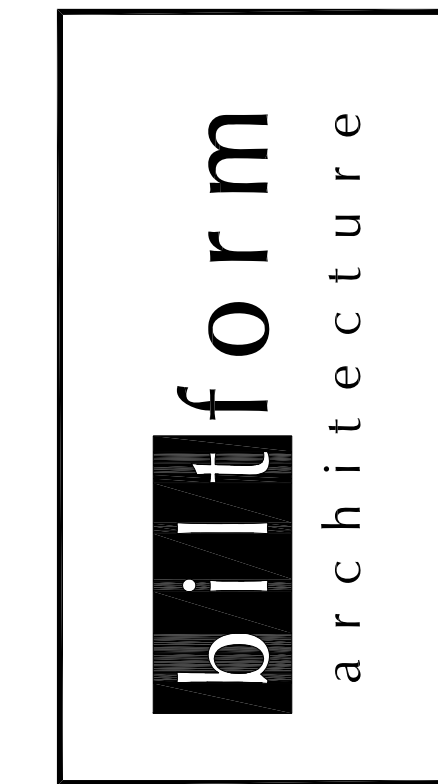
SCALE: 3/8" = 1'-0"



7 MAN GATE DETAIL

3" = 1'-0"

GATE DETAILS & PARKING CANOPY DETAILS



biltform architecture group of companies, llc.

11460 north cave creek road - suite 11 phoenix - arizona 85020  
Phone 602.285.9200 Fax 602.285.9229

PRELIMINARY  
NOT FOR  
CONSTRUCTION

EXPIRES 09/30/2016

DESIGN REVIEW  
RESUBMITTAL  
03-01-16

Aviva (HTG Mesa)  
West of the Santan Freeway on Baseline Road  
Mesa, Arizona  
HTG Mesa, LLC  
3225 Aviation Avenue Suite 602 Coconut Grove, FL 33133

REVISIONS:

△	-
△	-
△	-
△	-

JOB NO: 13-430

DATE: 01/26/2016

SCALE:

SHEET NO: NO SCALE

A11.0

© BILTFORM ARCHITECTURE GROUP, INC.