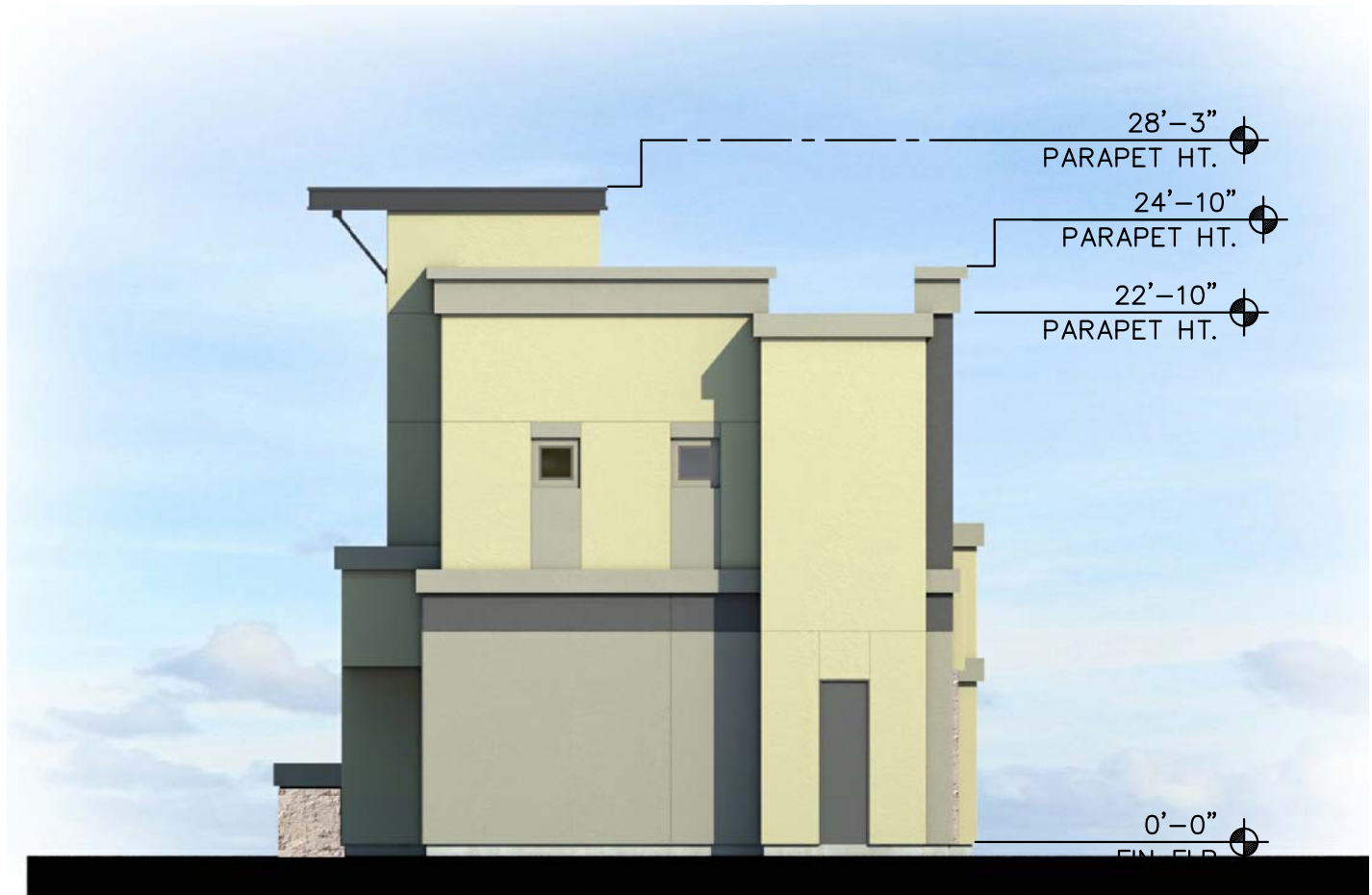


A FRONT ELEVATION



B RIGHT ELEVATION



D LEFT ELEVATION



C REAR ELEVATION

ELEVATION KEY NOTES: #

1. EXTERIOR STUCCO SYSTEM.
2. METAL PARAPET CAP.
3. FOAM/STUCCO PARAPET CAP.
4. STONE VENEER.
5. METAL CANOPY.
6. FOAM OR WOOD FRAME/POP-OUT WITH STUCCO FINISH.
7. WINDOW - BRONZE COLORED FRAME.
8. LIGHT GAUGE METAL CHANNEL.
9. PROJECT SIGNAGE, UNDER SEPARATE PERMIT.
10. 42" HIGH TUBE STEEL BALCONY RAILING WITH VERTICAL PICKETS.
11. DOOR.
12. STUCCO CONTROL JOINT.
13. SECTIONAL GARAGE DOOR.
14. RESIDENT AND VISITOR ENTRY FROM STREET.
15. RECESSED WINDOW SURROUND.
16. ALUMINUM STOREFRONT SYSTEM.
17. METAL BRACKET.
18. BALCONY SCUPPER OPENING.
19. CONCRETE STEPS, REFER TO SITE PLAN AND CIVIL DRAWINGS.
20. LINE OF ROOF BEYOND, PARAPET TO SHROUD MECHANICAL EQUIPMENT MOUNTED ON ROOF.
21. 42" HIGH RAILING WITH VERTICAL PICKETS AT JULIET BALCONY
22. SLIDING GLASS PATIO DOOR - BRONZE COLORED FRAME.
23. WOOD FRAME COLUMN WITH BRICK VENEER.
24. SCREEN WALL AT PATIO.
25. FIRE RISER ACCESS DOOR, PROVIDE SIGNAGE IN ACCORDANCE WITH CITY OF PHOENIX FIRE DEPARTMENT REQUIREMENTS.
26. WOOD FRAME OVERHANG WITH STUCCO FINISH AND METAL FLASHING.
27. SCUPPER THROUGH PARAPET.
28. TELESCOPING DOOR SYSTEM.
29. GROUND PLANE.
30. OPENING - REFER TO BUILDING PLAN.
31. TUBE STEEL ELECTRICAL EQUIPMENT ENCLOSURE WITH TUBE STEEL GATE WITH METAL MESH SCREEN.
32. TOP EDGE OF WOOD FRAME POP-OUT.

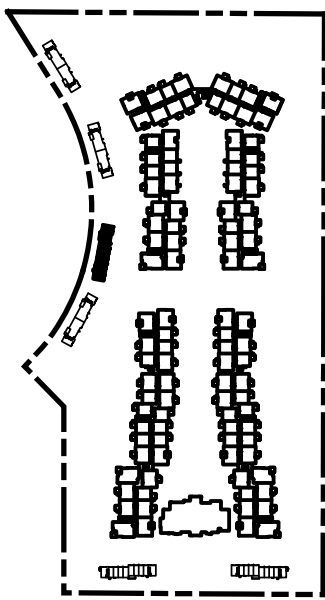
EXTERIOR COLOR SCHEME:

A PRIMARY STUCCO	FRAZEE CL 3214M "WAVELENGTH"
B SECONDARY STUCCO	FRAZEE CLC 1228W "NEWBURY"
C STUCCO 3 DOORS, STAIRS, CANOPIES CARPORTS & RAILINGS	FRAZEE CL 3216A "BRAINGHILD"
D STONE VENEER	CORONADO STONE THE GETTY STONE "EMBASSY BLEND"

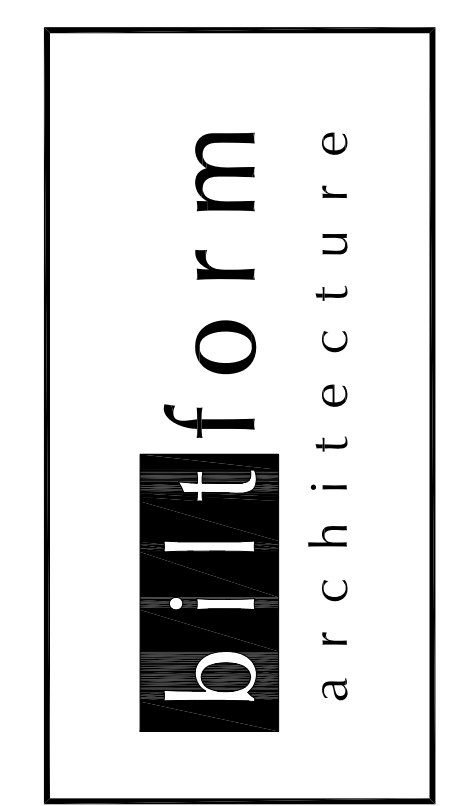
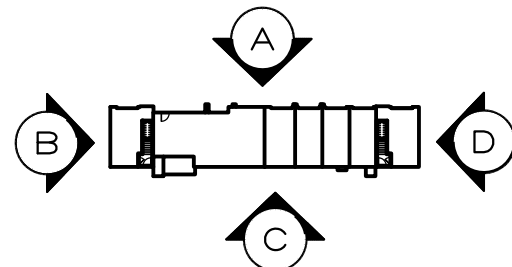
GENERAL ELEVATION NOTES:

1. ALL ROOF MOUNTED MECHANICAL EQUIPMENT SHALL FULLY SCREENED BY PARAPET WALLS EQUAL TO OR GREATER THAN THE HIGHEST POINT OF THE MECHANICAL EQUIPMENT.
2. SOLID MASONRY WALLS AND GATES EQUAL TO OR GREATER THAN THE HIGHEST POINT OF THE MECHANICAL EQUIPMENT SHALL SCREEN ALL GROUND MOUNTED MECHANICAL EQUIPMENT.
3. SIGNS AND CARPORT REQUIRE SEPARATE PERMIT.
4. PAINT UNDERSIDE OF BALCONIES TO MATCH ADJACENT BUILDING COLOR UNLESS NOTED OTHERWISE.
5. PAINT ALL LOUVERS, VENTS & CAPS TO MATCH ADJACENT FIELD MATERIAL COLOR.
6. FIRST FLOOR PATIO AND SITE WALLS ARE NOT SHOWN ON BUILDING ELEVATIONS FOR CLARITY. SEE SITE PLAN AND SITE DETAILS FOR ADDITIONAL INFORMATION.

KEY SITE DIAGRAM



BUILDING DIAGRAM



biltform architecture  
group of  
companies, llc.

11460 north cave creek road - suite 11  
phoenix - arizona 85020  
Phone 602.285.9200 Fax 602.285.9229

PRELIMINARY  
NOT FOR  
CONSTRUCTION

EXPIRES 09/30/2016

DESIGN REVIEW  
RESUBMITTAL  
03-01-16

Aviva (HTG Mesa)  
West of the Santan Freeway on Baseline Road  
Mesa, Arizona  
HTG Mesa, LLC  
3225 Aviation Avenue Suite 602 Coconut Grove, FL 33133

REVISIONS:

- 1. -
- 2. -
- 3. -
- 4. -

JOB NO: 13-030

DATE: 01/26/2016

SCALE: 1/8" = 1'-0"

SHEET NO:

A8.2.0C