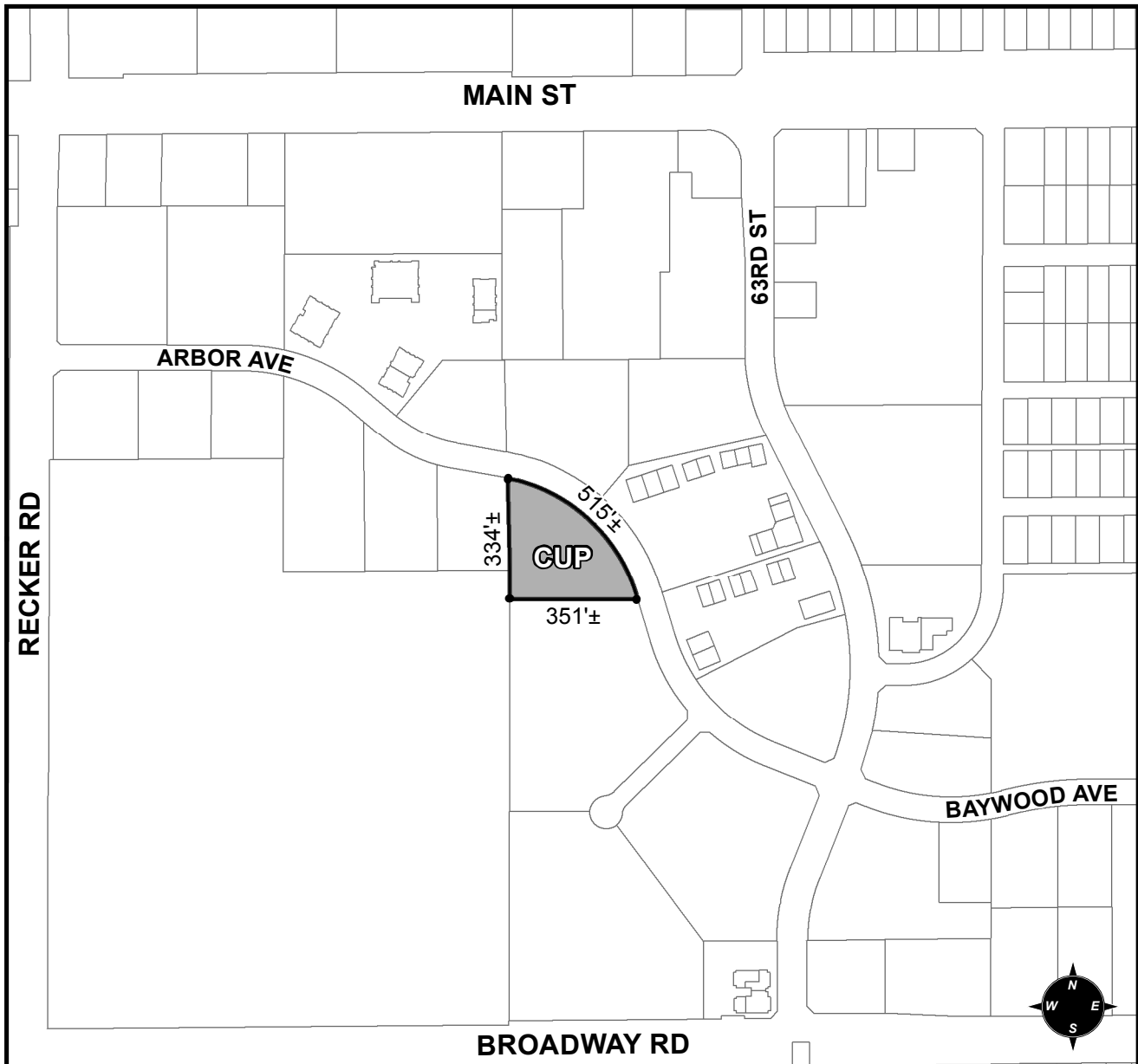




OFFICIAL SUPPLEMENTARY ZONING MAP AMENDING THE CITY OF MESA ZONING MAP



CASE: Z16-015

ACREAGE: 1.8±

REQUEST: COUNCIL USE PERMIT FOR A SOCIAL SERVICES FACILITY. THIS REQUEST WILL ALLOW FOR A SUBSTANCE ABUSE DETOXIFICATION AND TREATMENT CENTER.

ORDINANCE: _____

Please be advised that the attached zoning changes were approved by the Mesa City Council on _____, 2016 by Ordinance # _____. If you have any questions concerning these changes, contact the City of Mesa Planning Division at 480-644-2385.

ATTEST: _____ DATE: _____

MAYOR

CITY CLERK