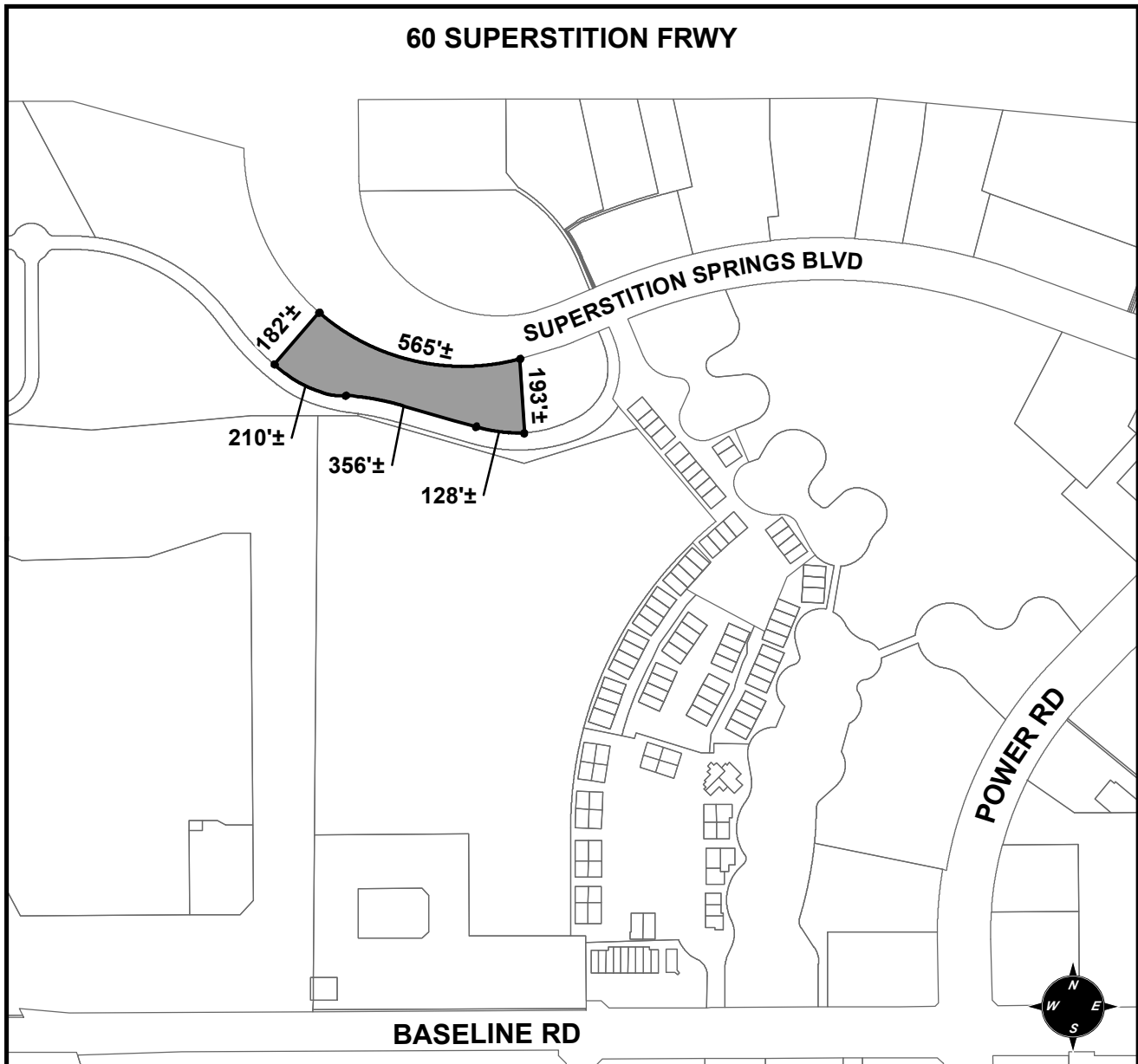




# OFFICIAL SUPPLEMENTARY ZONING MAP AMENDING THE CITY OF MESA ZONING MAP



CASE: Z15-020

ACREAGE: 2±

REQUEST: MODIFICATION OF AN EXISTING PAD OVERLAY IN THE LI ZONING DISTRICT AND SITE PLAN MODIFICATION (2± ACRES). THIS REQUEST WILL ALLOW FOR THE DEVELOPMENT OF AUTO SALES ON LOT F.

ORDINANCE: \_\_\_\_\_

Please be advised that the attached zoning changes were approved by the Mesa City Council on \_\_\_\_\_, 2016 by Ordinance # \_\_\_\_\_. If you have any questions concerning these changes, contact the City of Mesa Planning Division at 480-644-2385.

ATTEST: \_\_\_\_\_ DATE: \_\_\_\_\_

MAYOR

CITY CLERK