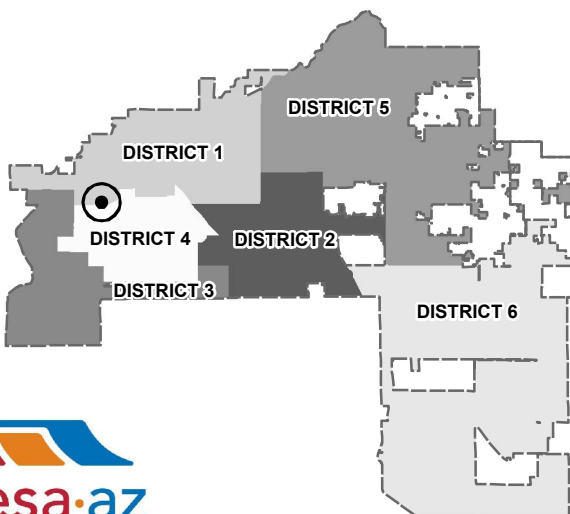
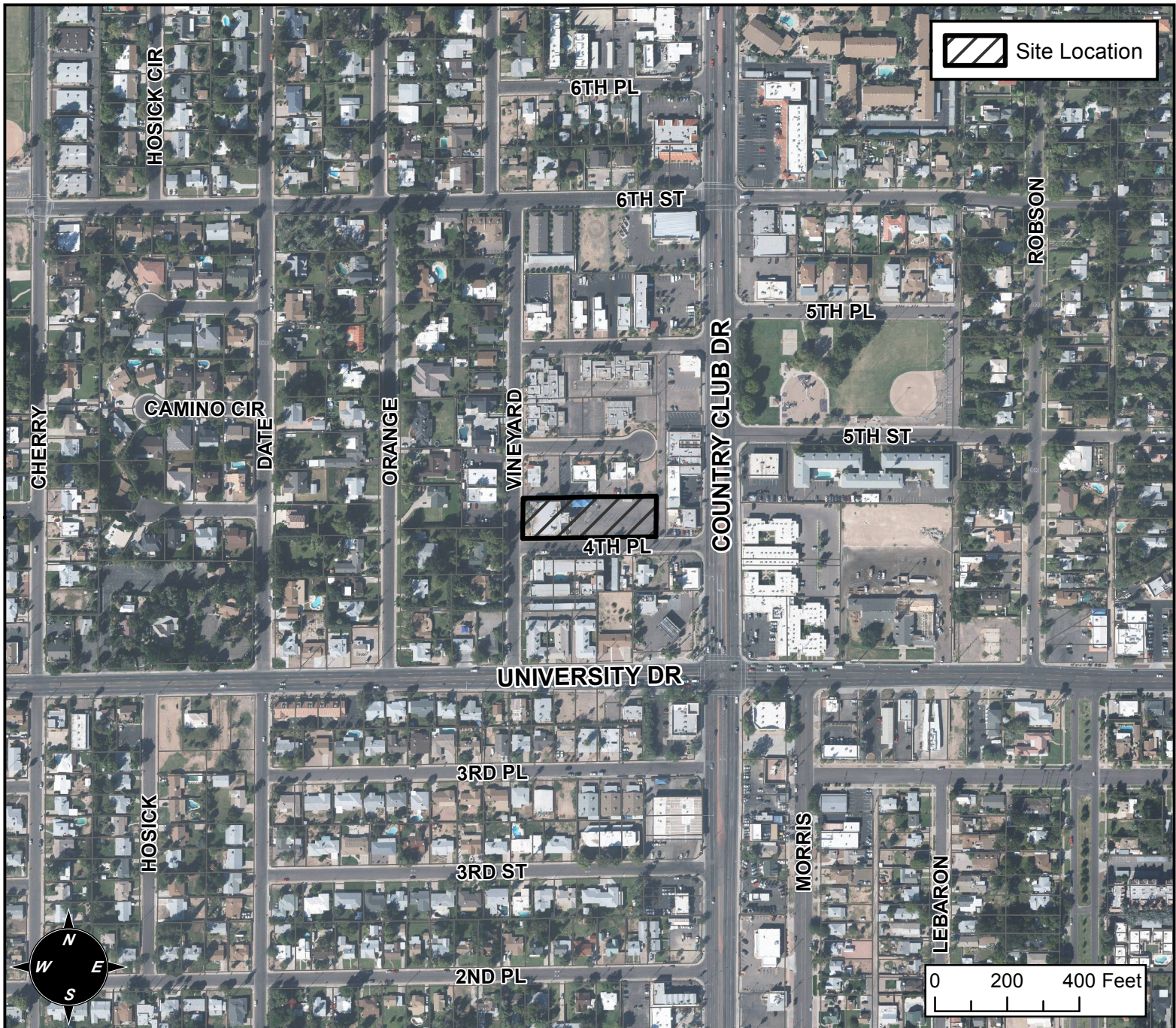


BOARD OF ADJUSTMENTS VICINITY MAP: BA16-002



CASE DETAILS

CASE:

BA16-002

ADDRESS:

450 W 4TH PL - (DISTRICT 1)

REQUEST:

REQUESTING A SUBSTANTIAL CONFORMANCE IMPROVEMENT PERMIT (SCIP) TO ALLOW: 1) A REDUCTION IN REQUIRED LANDSCAPING; AND 2) A REDUCTION OF REQUIRED LANDSCAPE BUFFER; AND 3) A REDUCTION OF REQUIRED PARKING SPACES, ALL IN THE RM-4 AND LC ZONING DISTRICTS.