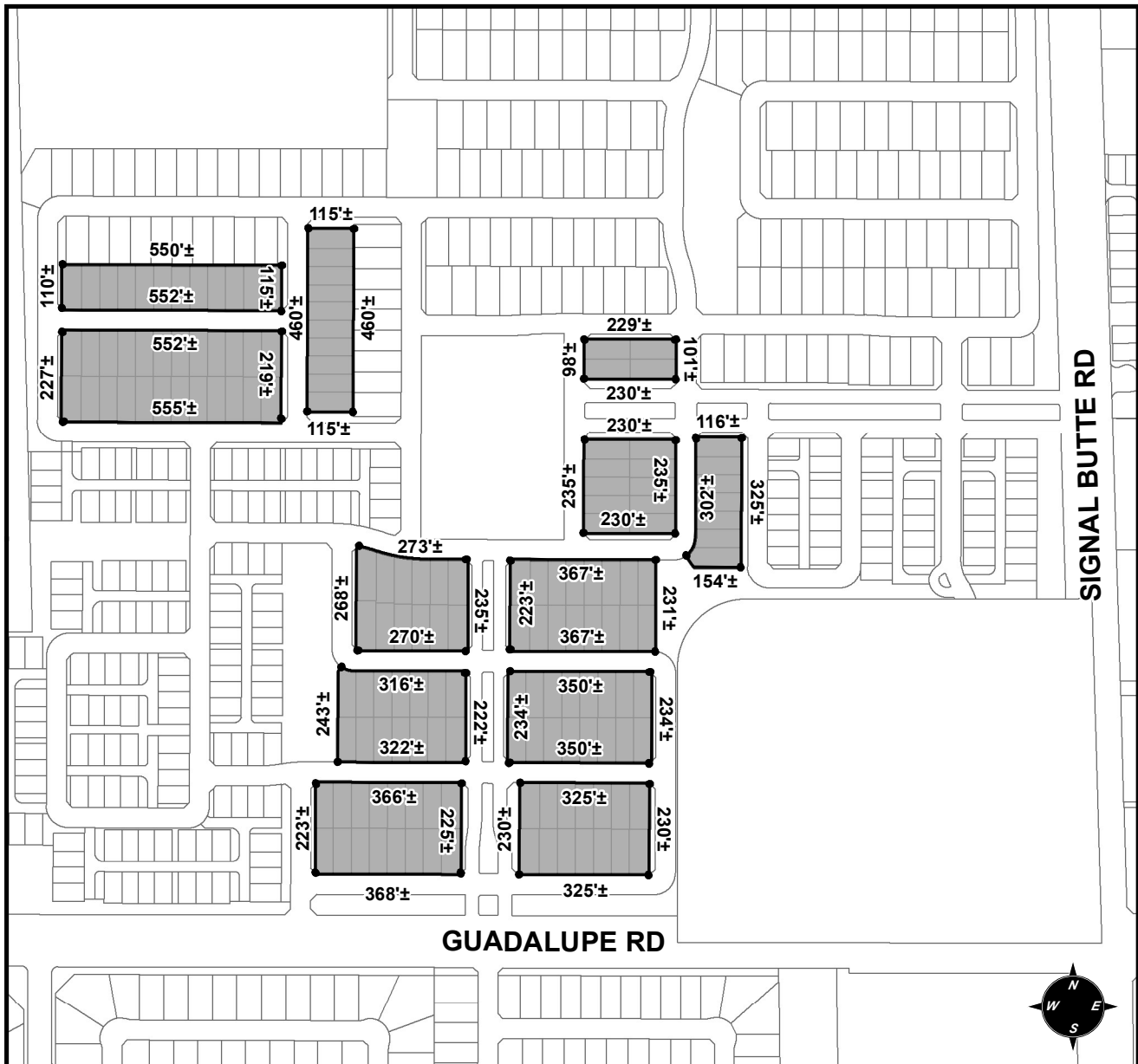




# OFFICIAL SUPPLEMENTARY ZONING MAP AMENDING THE CITY OF MESA ZONING MAP



CASE: Z15-045

ACREAGE: 17±

REQUEST: PAD MODIFICATION. THIS REQUEST WILL ALLOW FOR THE REDUCTION OF THE REQUIRED MINIMUM GARAGE WIDTH FOR LOTS 140 - 143, 175 - 220 AND 299 - 403 WITHIN MULBERRY PARCELS 2 AND 3.

ORDINANCE: \_\_\_\_\_

Please be advised that the attached zoning changes were approved by the Mesa City Council on \_\_\_\_\_, 2016 by Ordinance # \_\_\_\_\_. If you have any questions concerning these changes, contact the City of Mesa Planning Division at 480-644-2385.

ATTEST: \_\_\_\_\_ DATE: \_\_\_\_\_

MAYOR

CITY CLERK