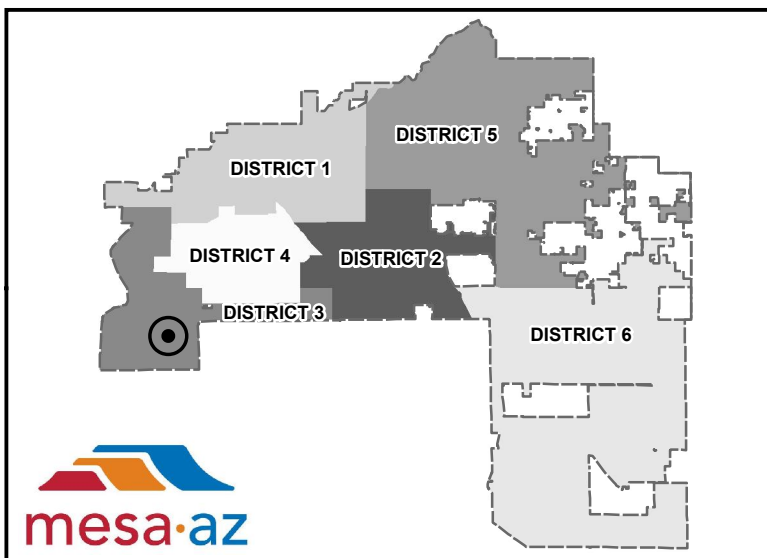
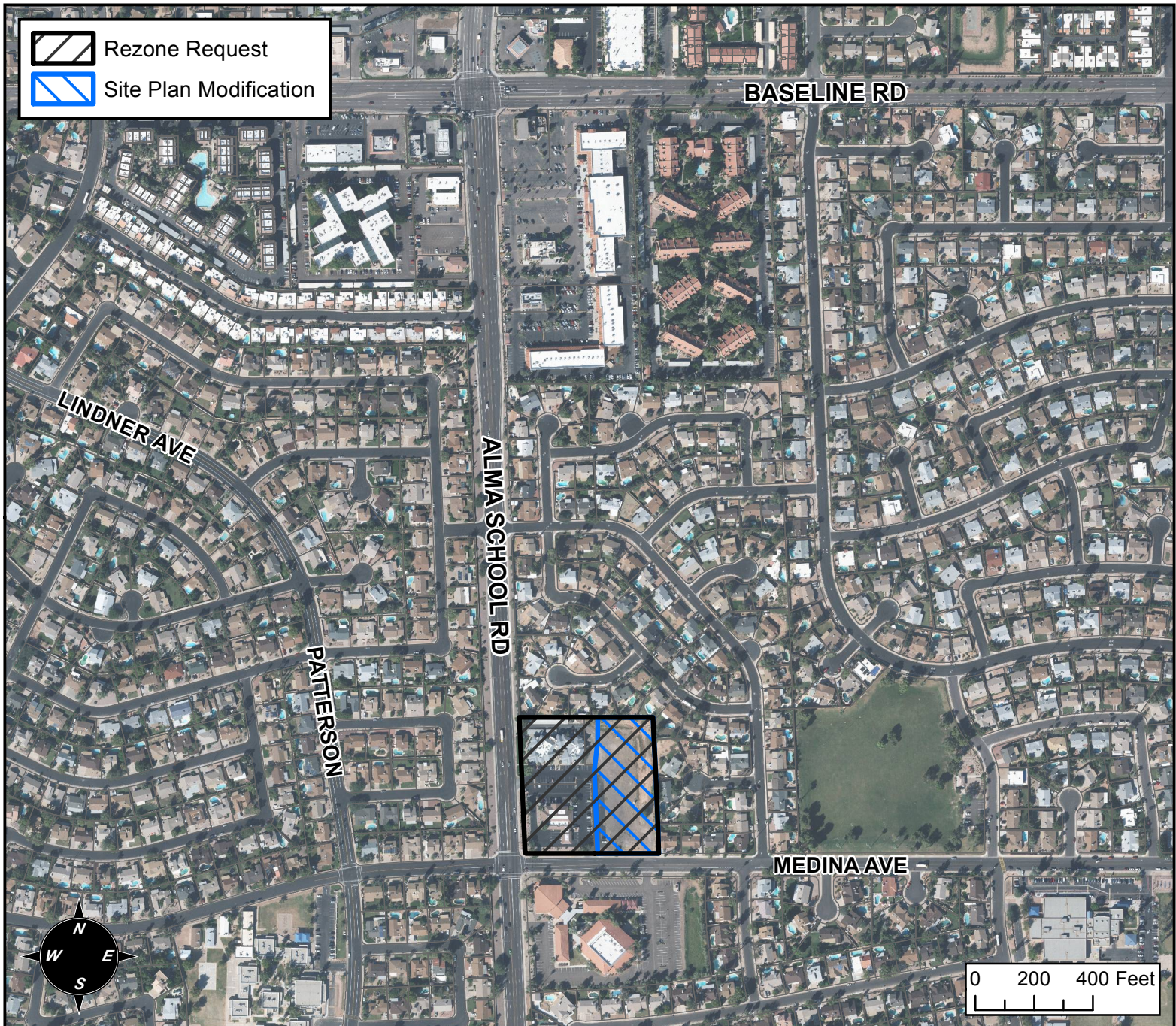


# PLANNING AND ZONING VICINITY MAP: Z15-038



## CASE DETAILS

### CASE:

Z15-038

PRE-PLAT : ☒

### PROJECT:

MEDINA COURT

### ADDRESS:

1126 W MEDINA AVE & 2345, 2355 S ALMA SCHOOL RD - DISTRICT 3

### REQUEST:

REZONING FROM OC TO RSL-4.0-PAD AND OC-PAD WITH SITE PLAN MODIFICATION. THIS REQUEST WILL ALLOW FOR THE DEVELOPMENT OF A SMALL LOT SINGLE-RESIDENCE SUBDIVISION.