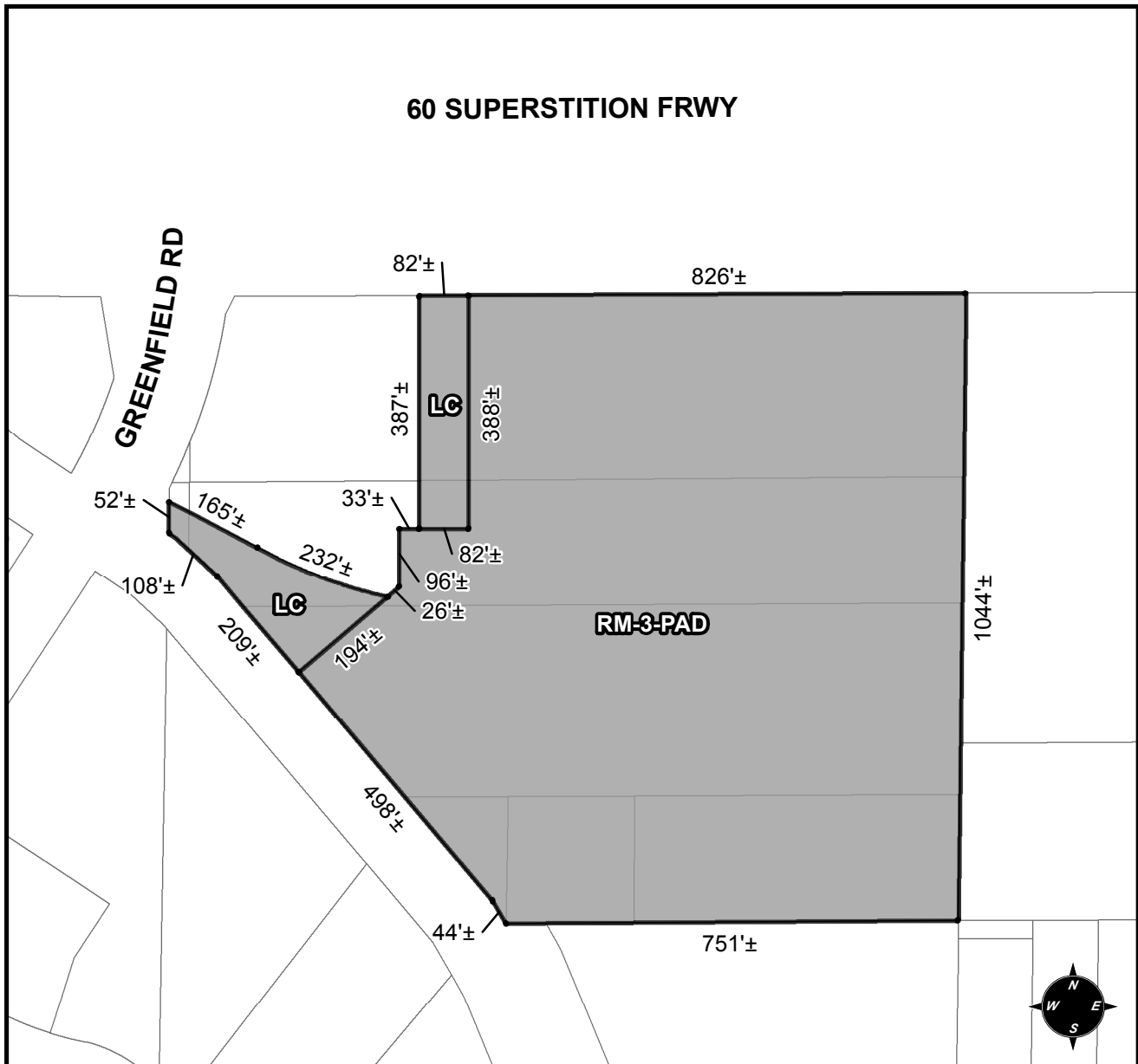




OFFICIAL SUPPLEMENTARY ZONING MAP AMENDING THE CITY OF MESA ZONING MAP



CASE: Z15-035

ACREAGE: 23.09±

REQUEST: REZONE FROM AG, LC AND LI-PAD TO LC AND RM-3-PAD AND SITE PLAN MODIFICATION.
THE REQUEST WILL ALLOW FOR THE DEVELOPMENT OF A MULTI-RESIDENTIAL COMPLEX.

ORDINANCE: _____

Please be advised that the attached zoning changes were approved by the Mesa City Council on _____, 2015 by Ordinance # _____. If you have any questions concerning these changes, contact the City of Mesa Planning Division at 480-644-2385.

MAYOR

ATTEST: _____ DATE: _____

CITY CLERK