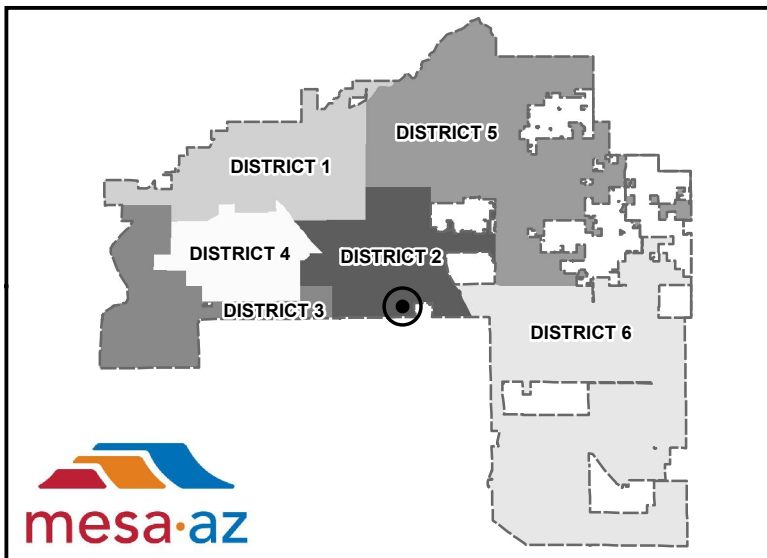
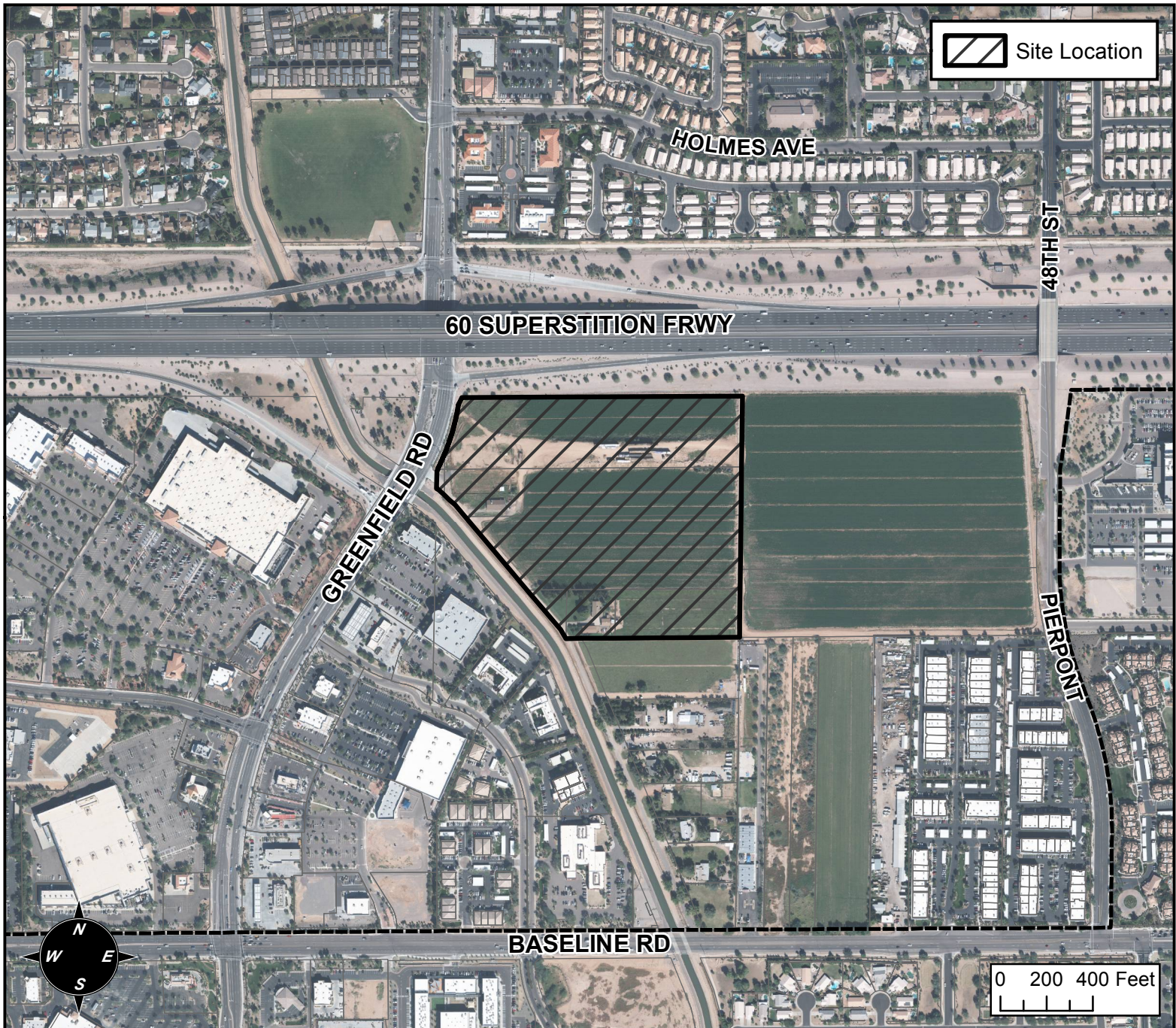


PLANNING AND ZONING VICINITY MAP: GPMinor15-001



CASE DETAILS

CASE:

GPMinor15-001

PRE-PLAT : ☐**ADDRESS:**

THE 1600 BLOCK OF SOUTH GREENFIELD ROAD AND
THE 1700 BLOCK OF SOUTH OLD GREENFIELD ROAD
(EAST SIDE) - (DISTRICT 2)

REQUEST:

GENERAL PLAN AMENDMENT TO CHANGE
CHARACTER TYPE FROM EMPLOYMENT TO MIXED
USE ACTIVITY DISTRICT. THE REQUEST WILL ALLOW
FOR THE DEVELOPMENT OF A MULTI-RESIDENTIAL
COMPLEX.