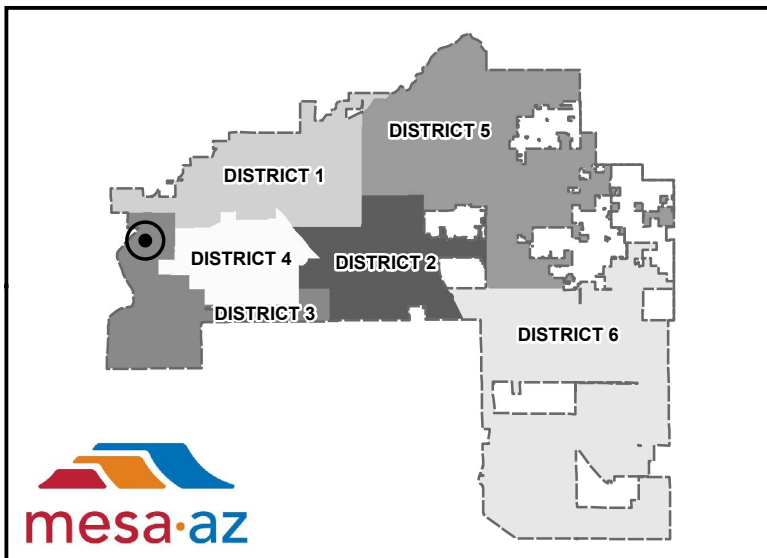
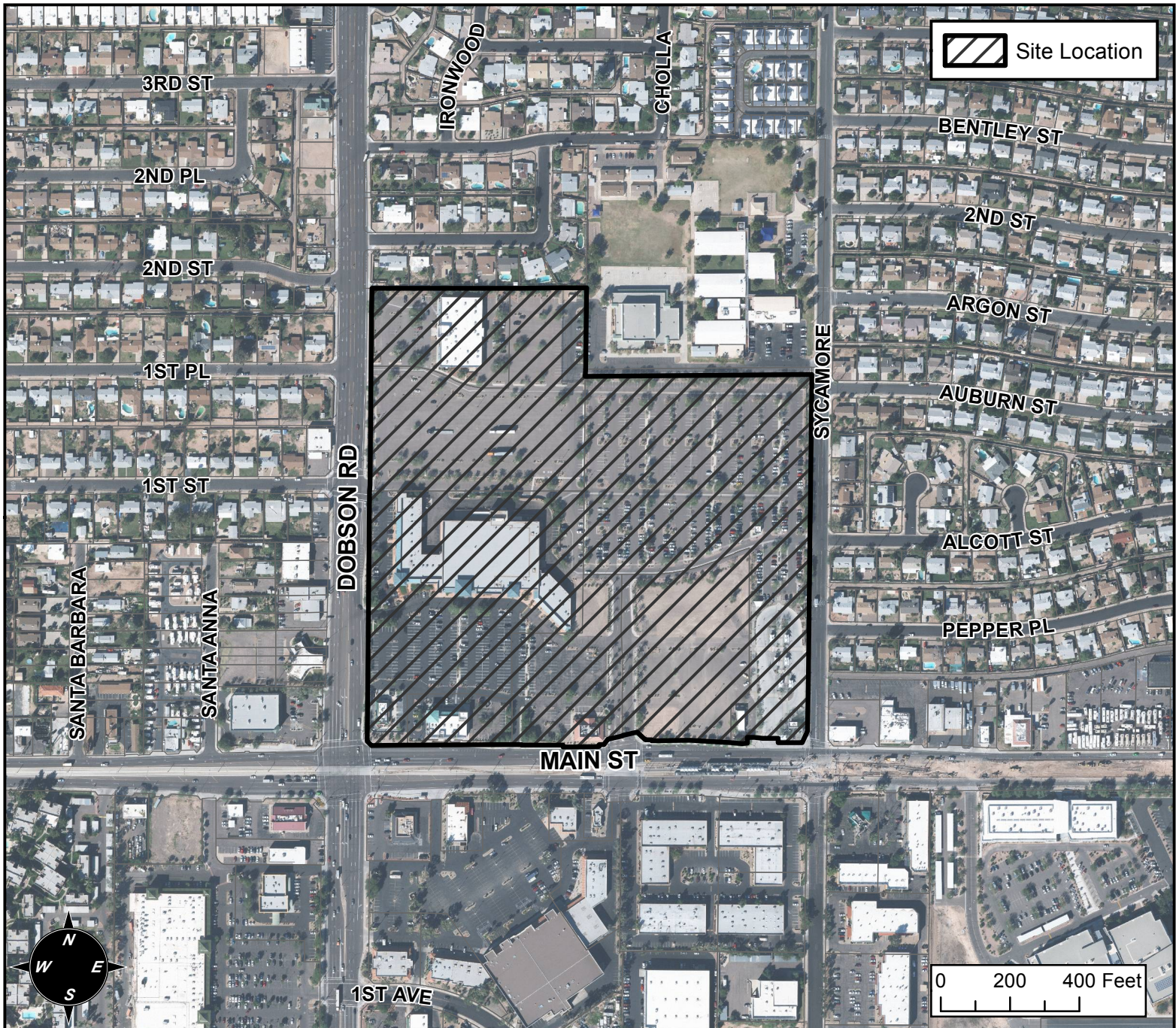


BOARD OF ADJUSTMENTS VICINITY MAP: BA15-051



CASE DETAILS

CASE:

BA15-051

ADDRESS:

1902 W MAIN ST - (DISTRICT 3)

REQUEST:

REQUESTING A SPECIAL USE PERMIT TO MODIFY A COMPREHENSIVE SIGN PLAN IN THE GC ZONING DISTRICT.