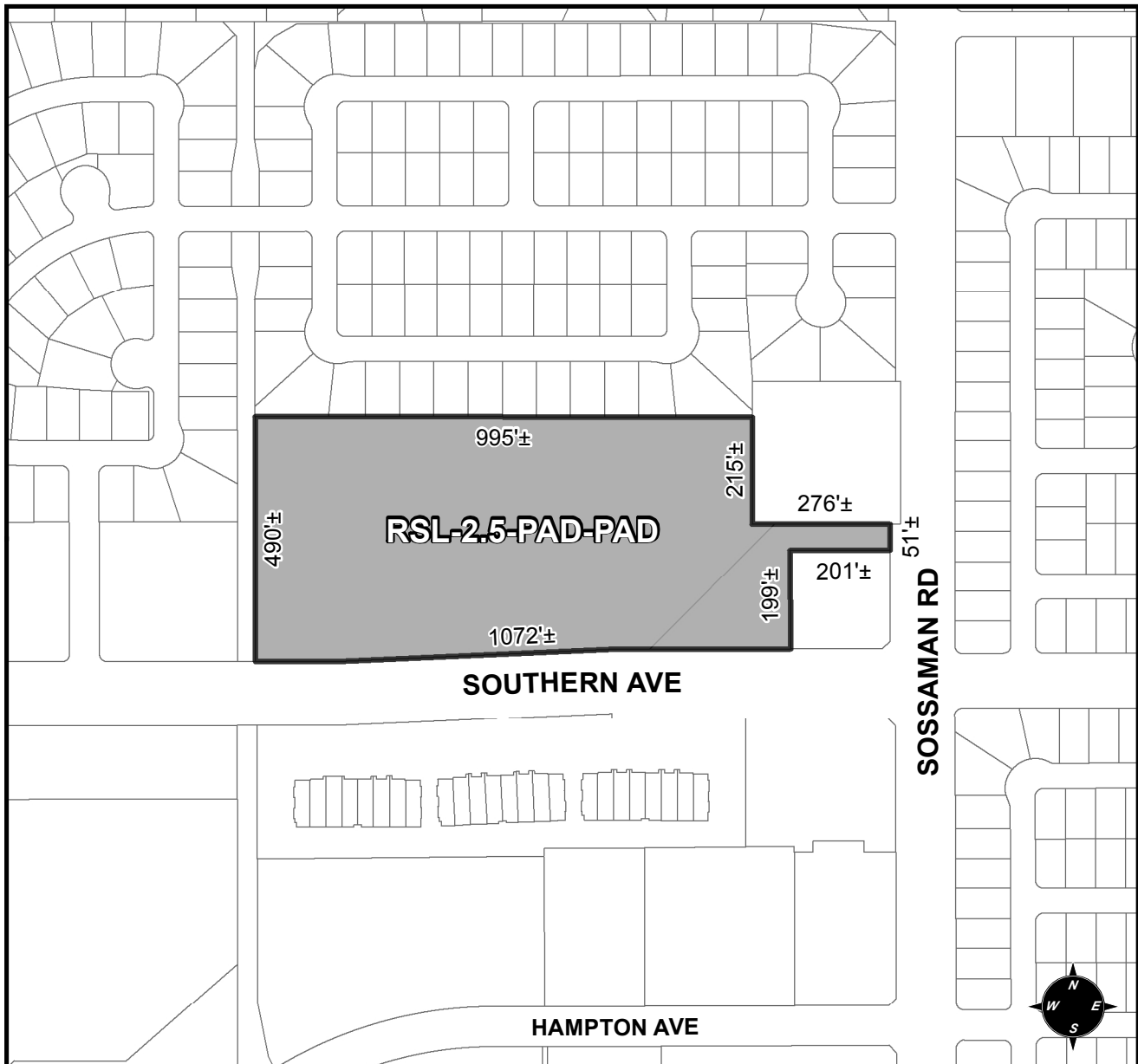




**OFFICIAL SUPPLEMENTARY ZONING MAP
AMENDING THE CITY OF MESA ZONING MAP**



CASE: Z15-026

ACREAGE: 11.57±

REQUEST: REZONE FROM LC-PAD-PAD TO RSL-2.5-PAD-PAD AND SITE PLAN REVIEW. THIS REQUEST WILL ALLOW FOR THE DEVELOPMENT OF A SINGLE RESIDENCE SUBDIVISION.

ORDINANCE: _____

Please be advised that the attached zoning changes were approved by the Mesa City Council on _____, 2015 by Ordinance # _____. If you have any questions concerning these changes, contact the City of Mesa Planning Division at 480-644-2385.

ATTEST: _____ DATE: _____

MAYOR

CITY CLERK