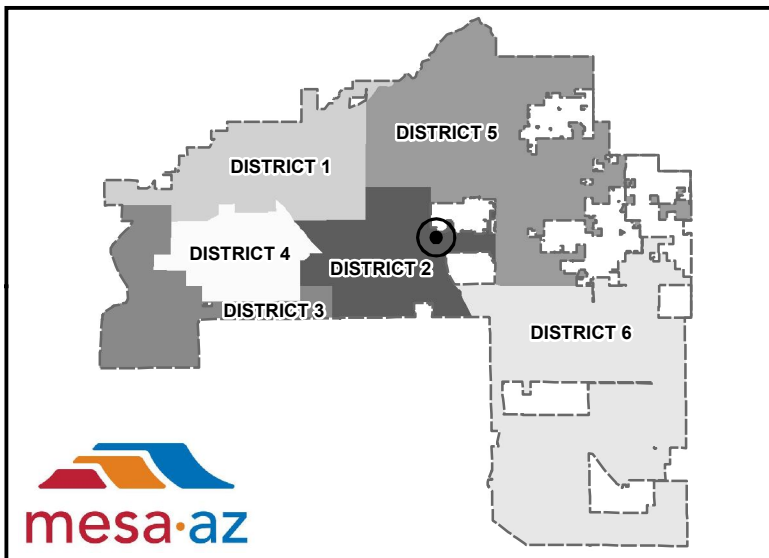
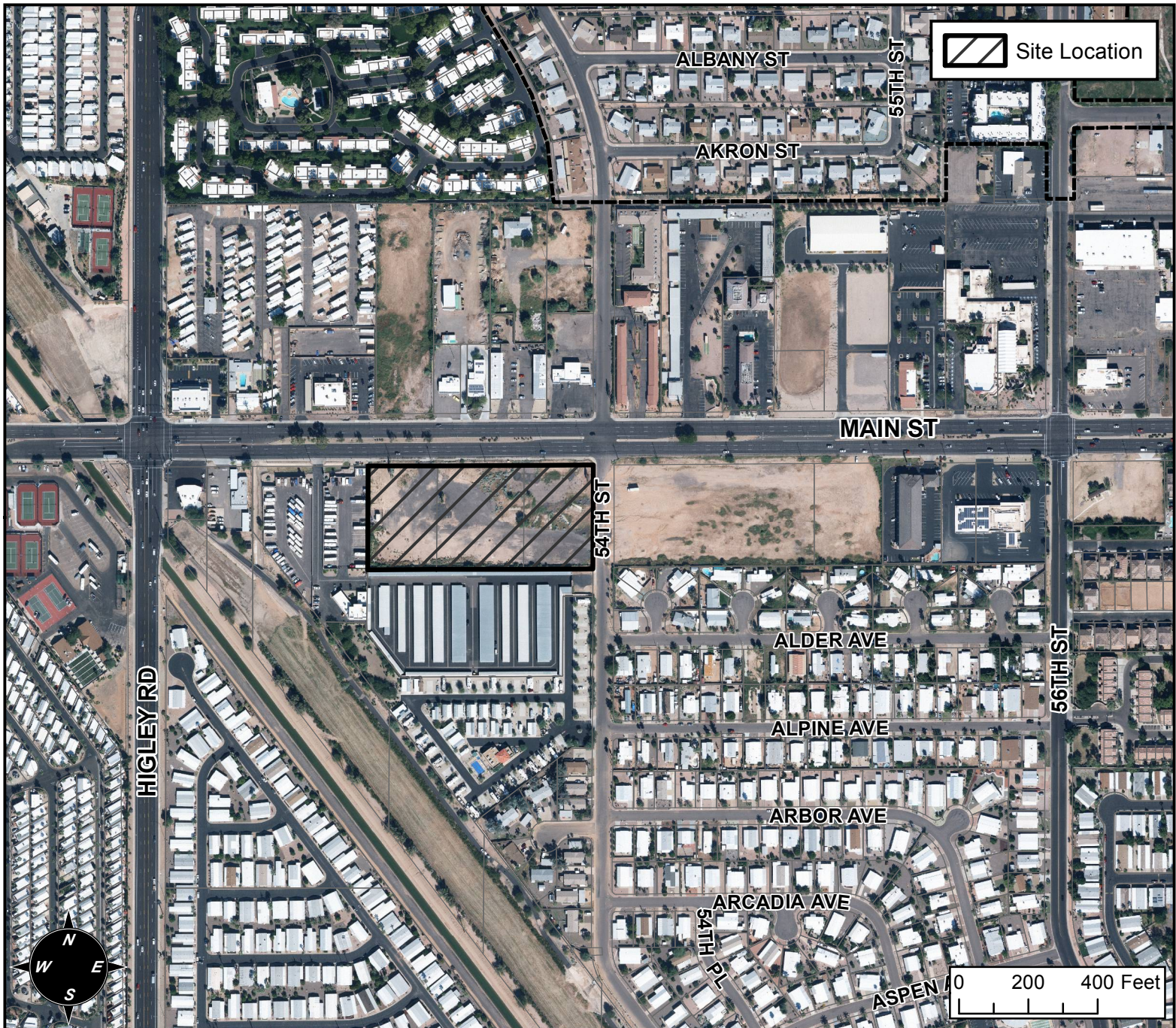


PLANNING AND ZONING VICINITY MAP: Z15-028



CASE DETAILS

CASE:

Z15-028

PRE-PLAT : ☒

PROJECT:

MAIN STREET DEVELOPMENT

ADDRESS:

THE 5300 BLOCK OF EAST MAIN STREET (SOUTH SIDE) - (DISTRICT 2)

REQUEST:

SITE PLAN REVIEW. THIS REQUEST WILL ALLOW FOR THE DEVELOPMENT OF A COMMERCIAL CENTER.