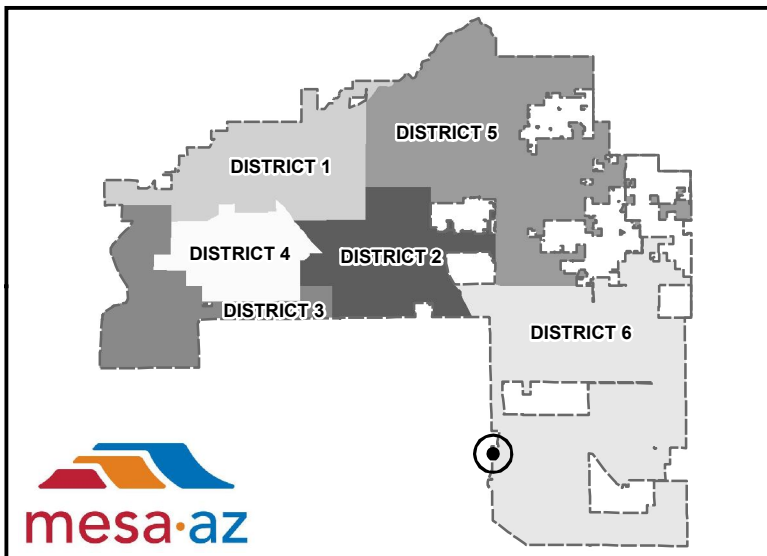
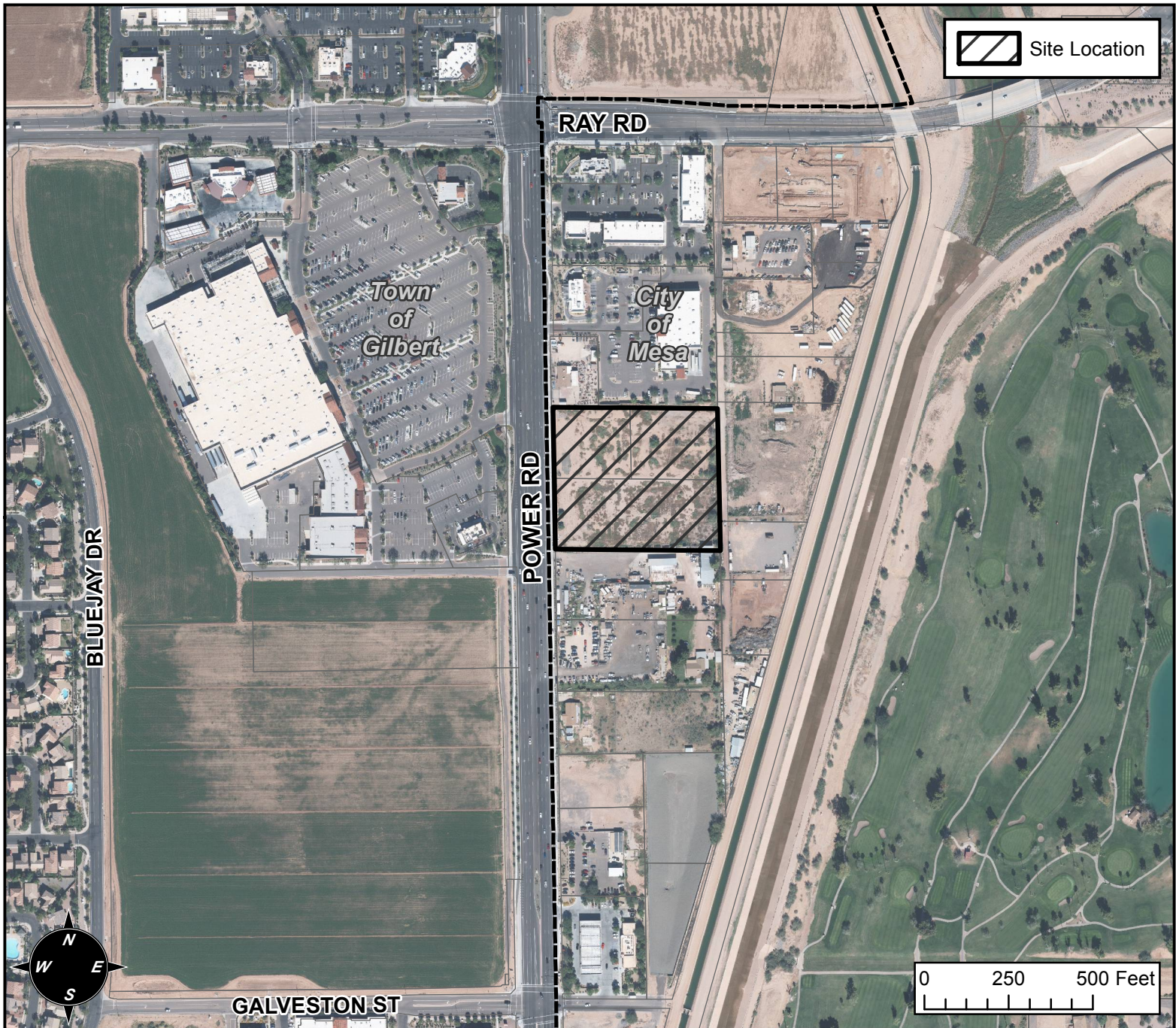


PLANNING AND ZONING FINAL PLAT VICINITY MAP



FINAL PLAT DETAILS

PROJECT:
GATEWAY PLAZA

LANGUAGE:

"GATEWAY PLAZA"- (DISTRICT 6) THE 5300 BLOCK OF SOUTH POWER ROAD (EAST SIDE) LOCATED SOUTH OF THE SOUTHEAST CORNER OF POWER AND RAY ROADS. 3 LC PAD LOTS. (4.74± AC.). PROPERTY INVESTMENT, LLC, OWNER; JERRY D. HEATH JR., R.L.S., HUNTER ENGINEERING, SURVEYOR