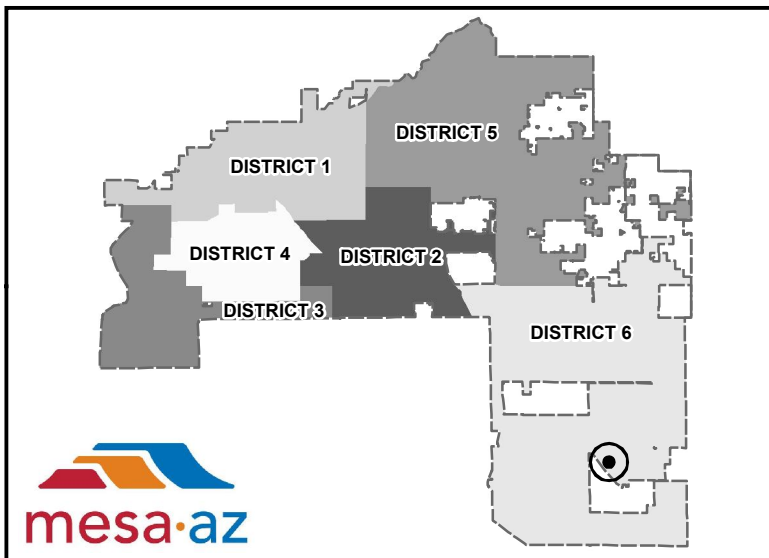
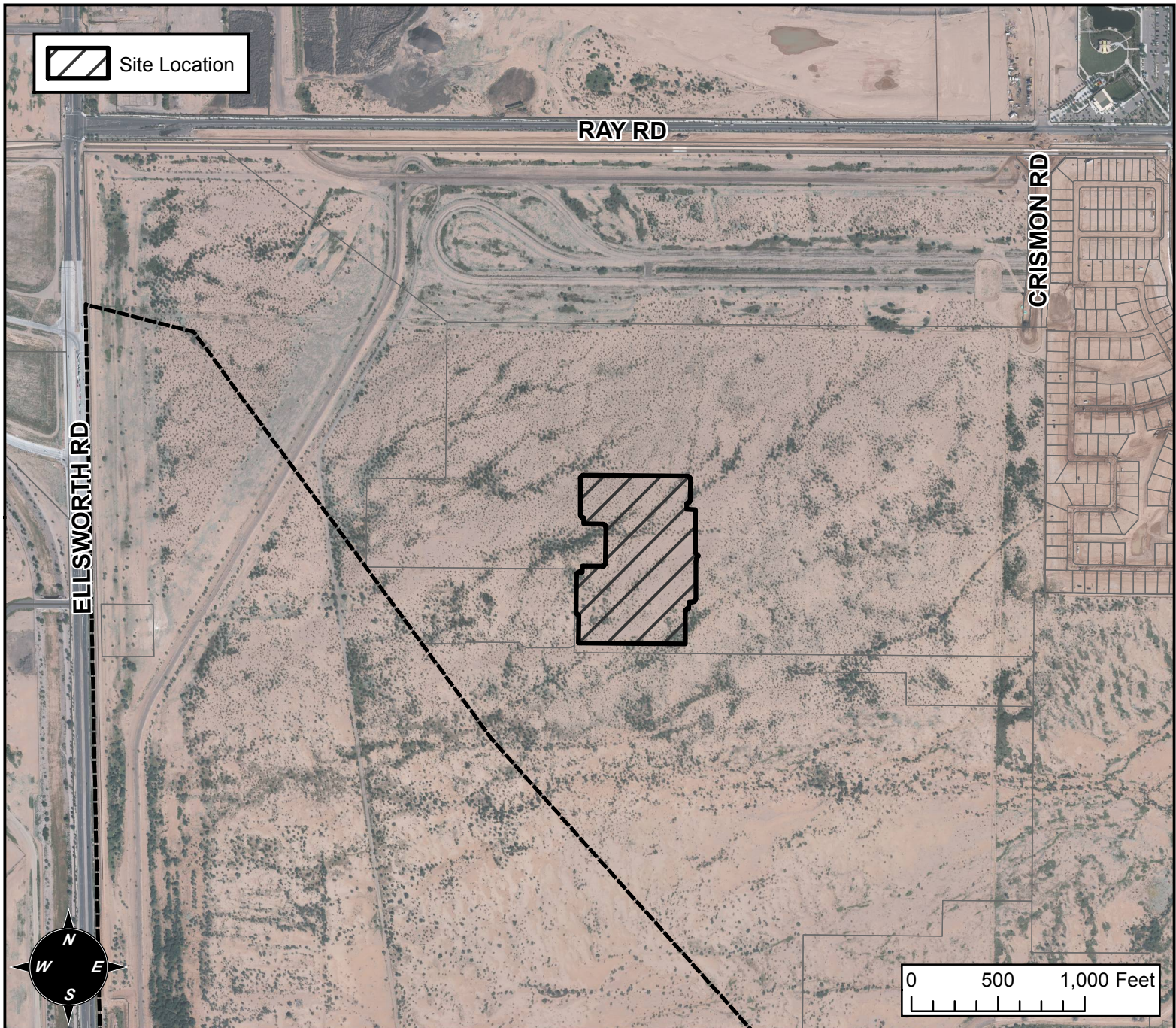


PLANNING AND ZONING FINAL PLAT VICINITY MAP



FINAL PLAT DETAILS

PROJECT:
PARCEL H AT PPGN

LANGUAGE:

“FINAL PLAT PARCEL H AT PPGN” (DISTRICT 6) THE 9600 BLOCK OF EAST CADENCE PARKWAY. LOCATED SOUTH OF RAY WEST OF CRISMON ROAD. A SINGLE-RESIDENCE SUBDIVISION. 65 PC LOTS (13.69± ACRES) PPGN – RAY, LLP, OWNER; JOE KRAFT, EPS GROUP, LAND SURVEYOR. (PLN2014-00364)