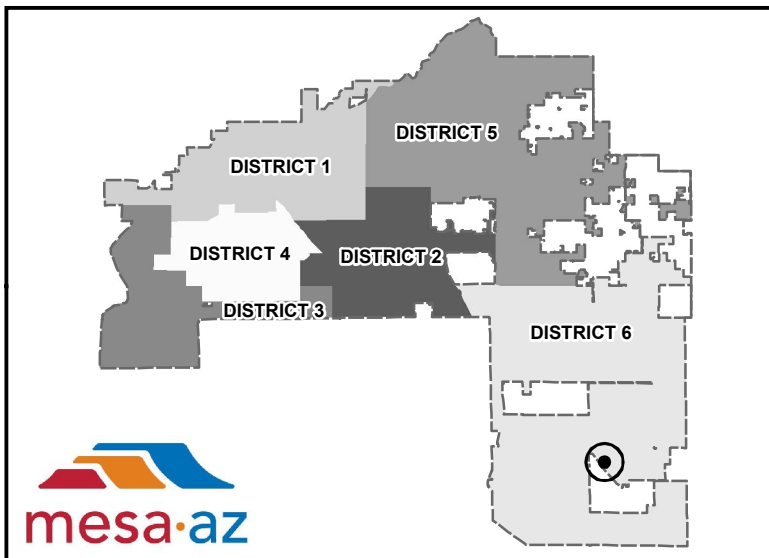
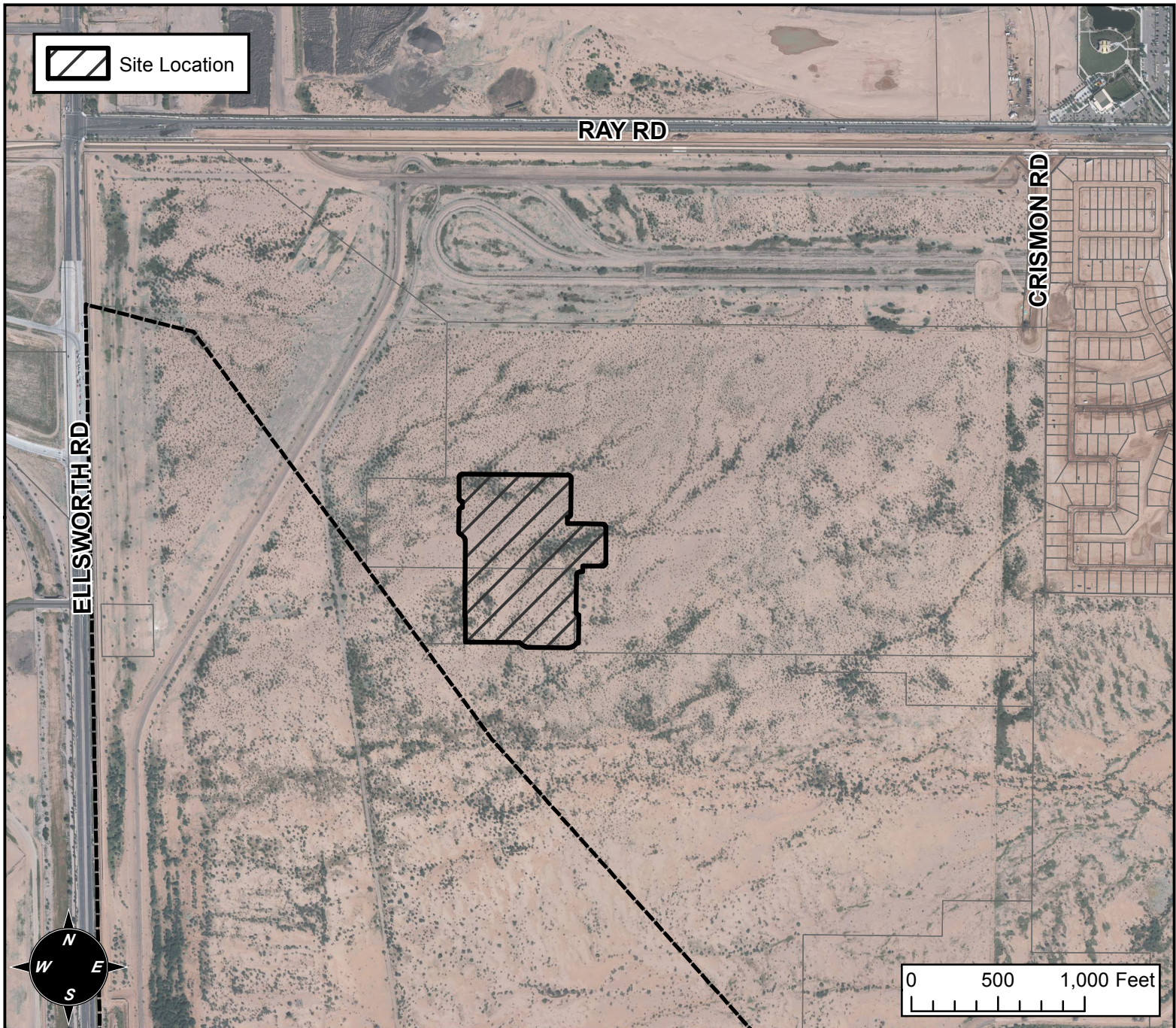


# PLANNING AND ZONING FINAL PLAT VICINITY MAP



## FINAL PLAT DETAILS

**PROJECT:**  
PARCEL I AT PPGN

**LANGUAGE:**

"FINAL PLAT PARCEL I AT PPGN" (DISTRICT 6) THE 9500 TO THE 9600 BLOCKS OF EAST CADENCE PARKWAY. LOCATED SOUTH OF RAY WEST OF CRISMON ROAD. A SINGLE-RESIDENCE SUBDIVISION. 68 PC LOTS (15.54± ACRES) PPGN – RAY, LLP, OWNER; JOE KRAFT, EPS GROUP, LAND SURVEYOR.