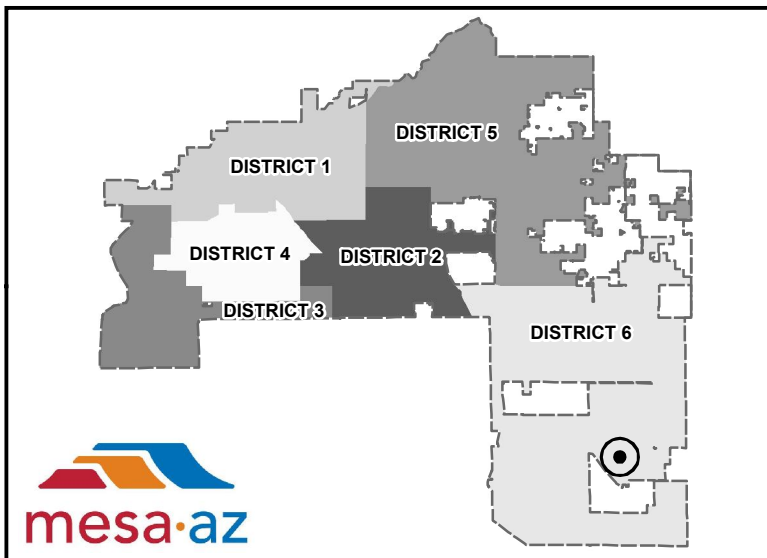
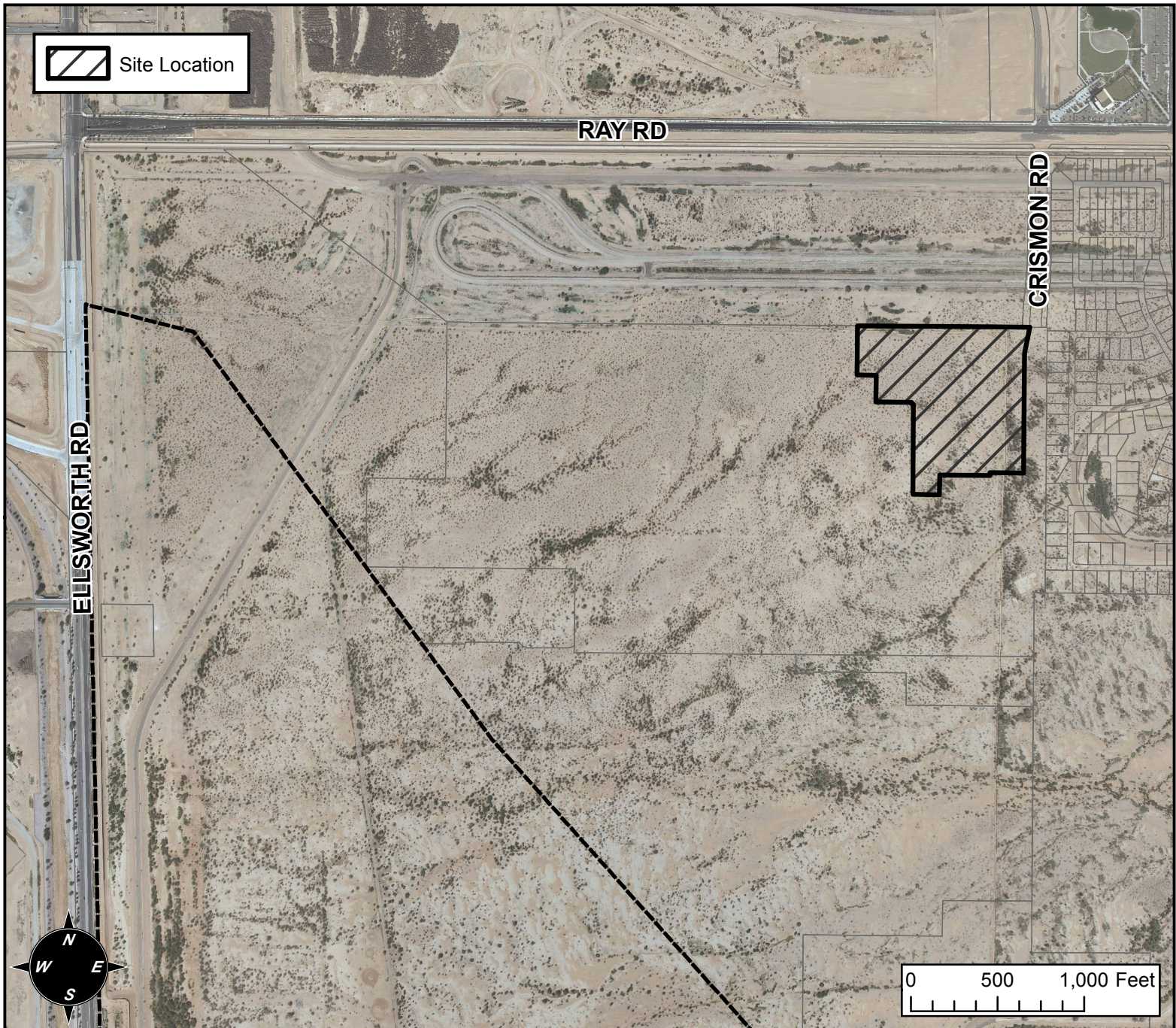


PLANNING AND ZONING FINAL PLAT VICINITY MAP



FINAL PLAT DETAILS

PROJECT:
PARCEL D AT PPGN

LANGUAGE:
"FINAL PLAT PARCEL D AT PPGN" (DISTRICT 6) THE 5300 TO 5400 BLOCKS OF SOUTH CRISMON ROAD. LOCATED SOUTH OF RAY WEST OF CRISMON ROAD. A SINGLE-RESIDENCE SUBDIVISION. 82 PC LOTS (15.84± ACRES) PPGN – RAY, LLP, OWNER; JOE KRAFT, EPS GROUP, LAND SURVEYOR.