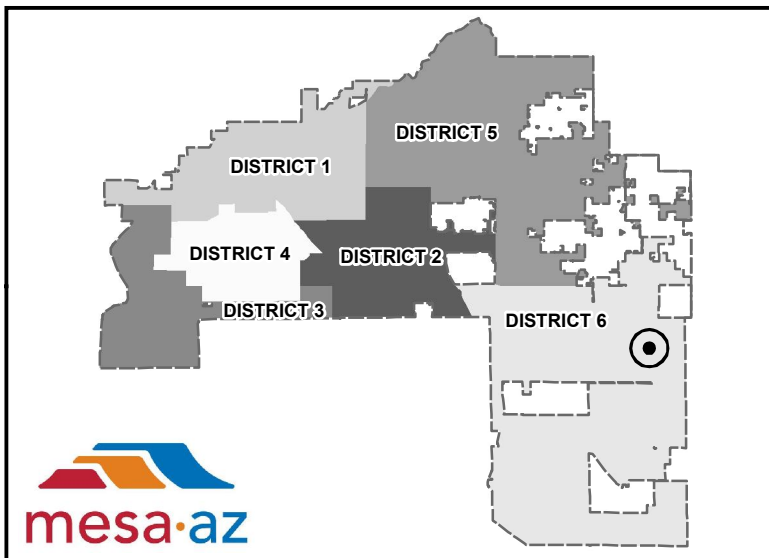
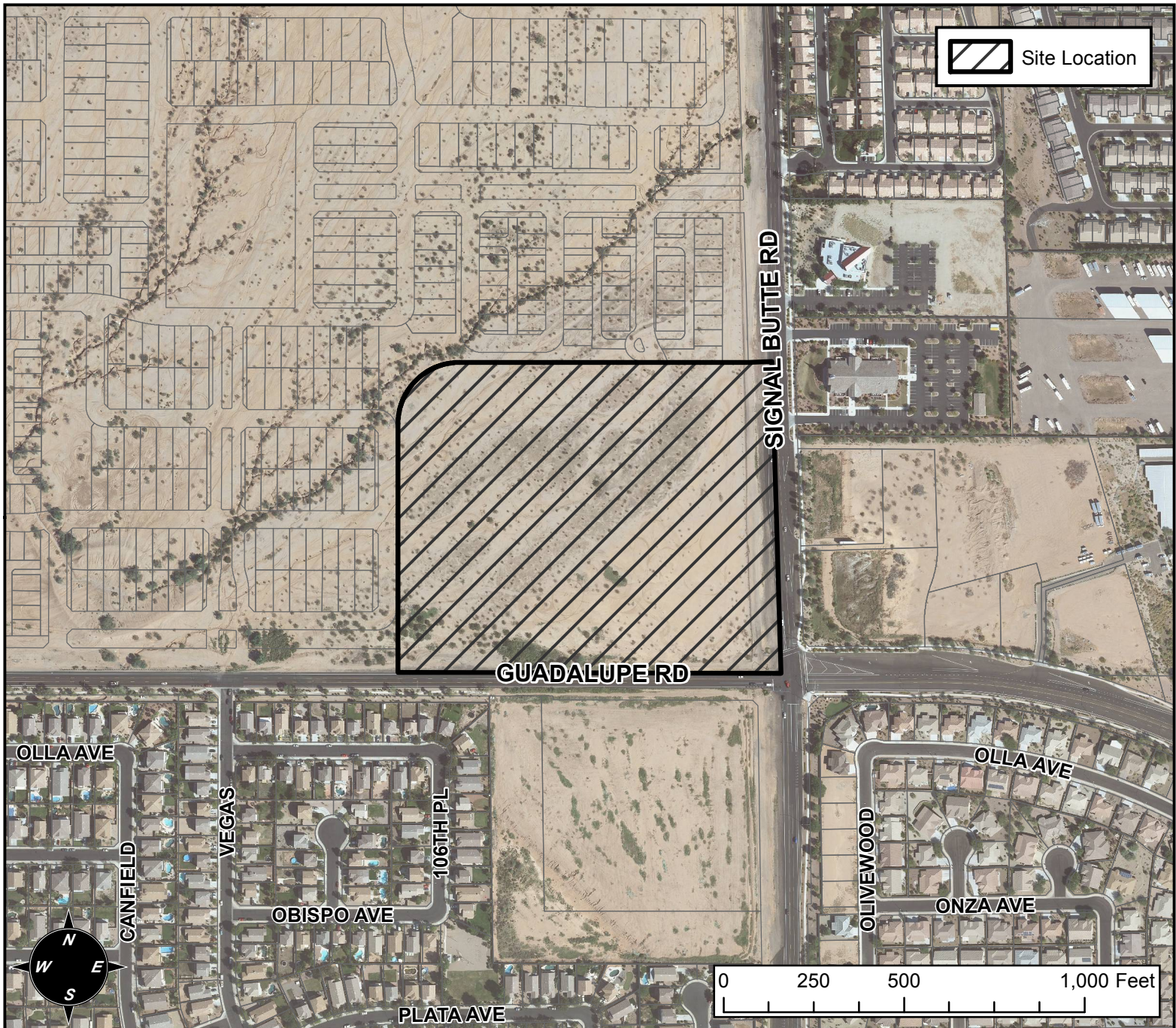


# PLANNING AND ZONING FINAL PLAT VICINITY MAP



## FINAL PLAT DETAILS

**PROJECT:**  
MULBERRY MARKETPLACE

**LANGUAGE:**  
“MULBERRY MARKETPLACE” (DISTRICT 6). 10600 TO THE 10800 BLOCKS OF EAST GUADALUPE ROAD (NORTH SIDE). LOCATED AT THE NORTHWEST OF SIGNAL BUTTE ROAD AND GUADALUPE ROAD. 5 LC-PAD COMMERCIAL LOTS (20± ACRES). G. BROWN INVESTMENTS 1, LLC, OWNER; ALI FAKIH, SUSTAINABILITY ENGINEERING GROUP, ENGINEER.