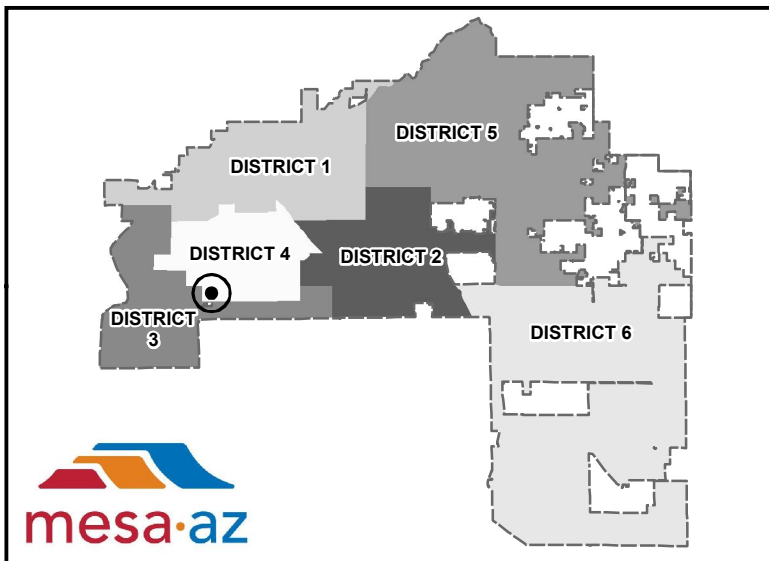
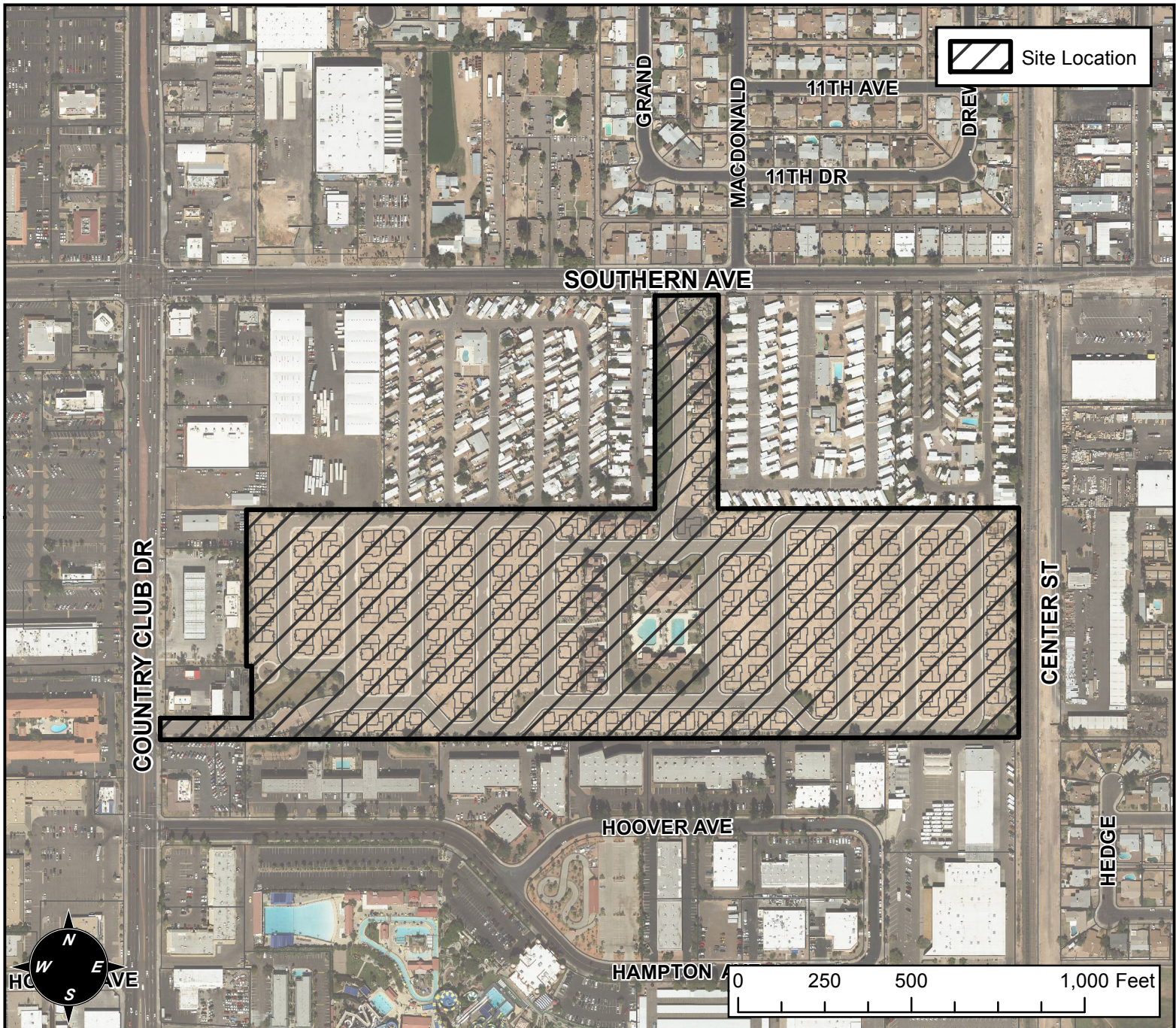


PLANNING AND ZONING FINAL PLAT VICINITY MAP



FINAL PLAT DETAILS

PROJECT:

VILLAGES AT COUNTRY CLUB AMENDED II

LANGUAGE:

"VILLAGES AT COUNTRY CLUB AMENDED II" (DISTRICT 4) THE 130 TO 150 BLOCK OF WEST SOUTHERN AVENUE (SOUTH SIDE) AND THE 1300 TO 1400 BLOCK OF SOUTH COUNTRY CLUB DRIVE (EAST SIDE). LOCATED SOUTH OF SOUTHERN AVENUE AND EAST OF COUNTRY CLUB DRIVE. (38± ACRES). MICHAEL ZIPPRICH, VACC, LLC, OWNER; LARRY SULLIVAN, P.E., COE & VAN LOO CONSULTANTS, INC., ENGINEER.