



Public Safety Committee

**Mesa Regional Dispatch Center
CP0340**

March 2, 2015

Mesa Regional Dispatch Center

Presentation Outline

- Summary of Site Selection Process
- Preferred Site Recommendation
- Seek Committee's Input and Concurrence

2013 Public Safety Bond Election

Approved \$16M in bonds for a new Dispatch & Communications Center

- Space in existing facility limited
- Room for expansion needed
- Redundancy & resiliency needed

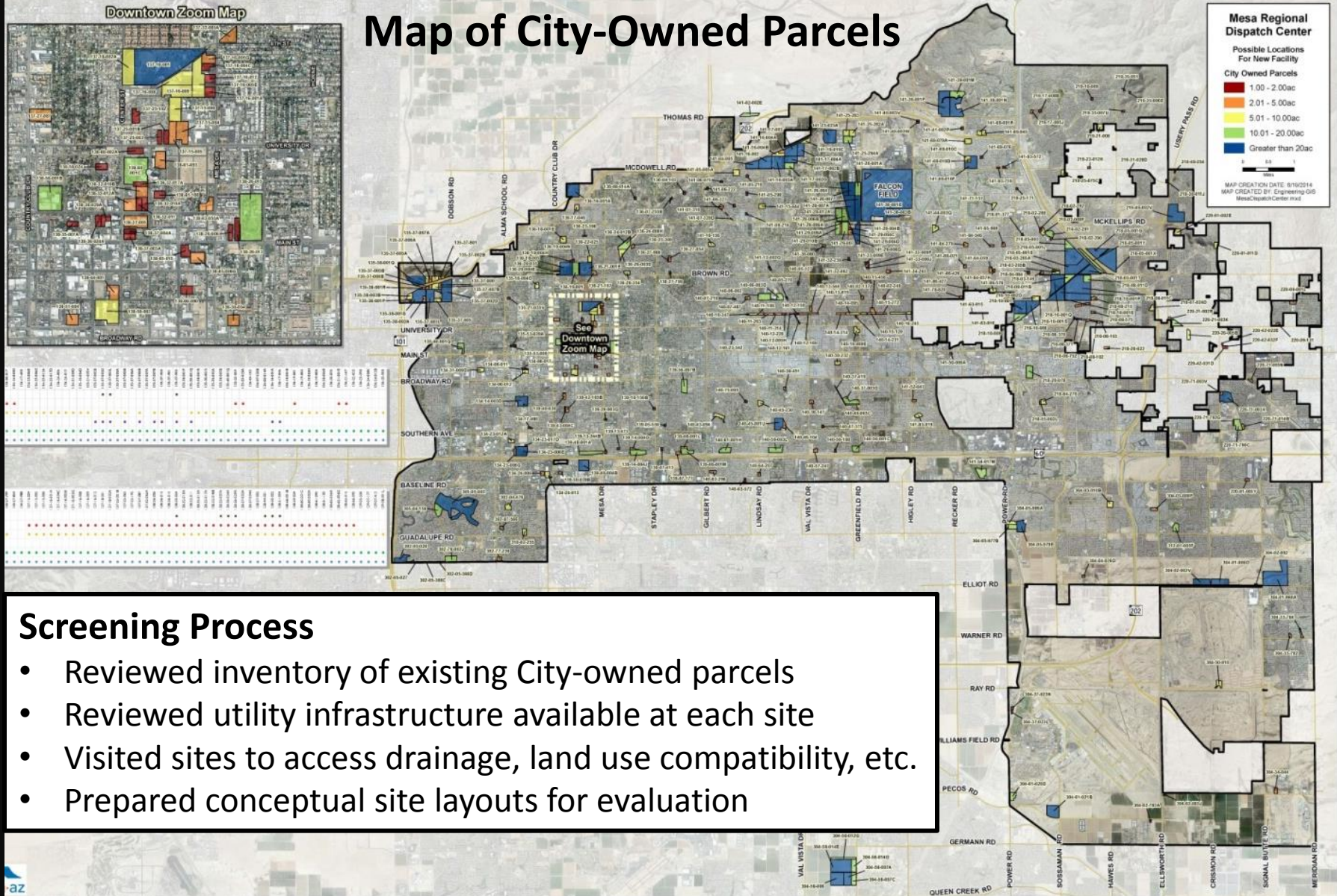


Summary of Site Selection Process

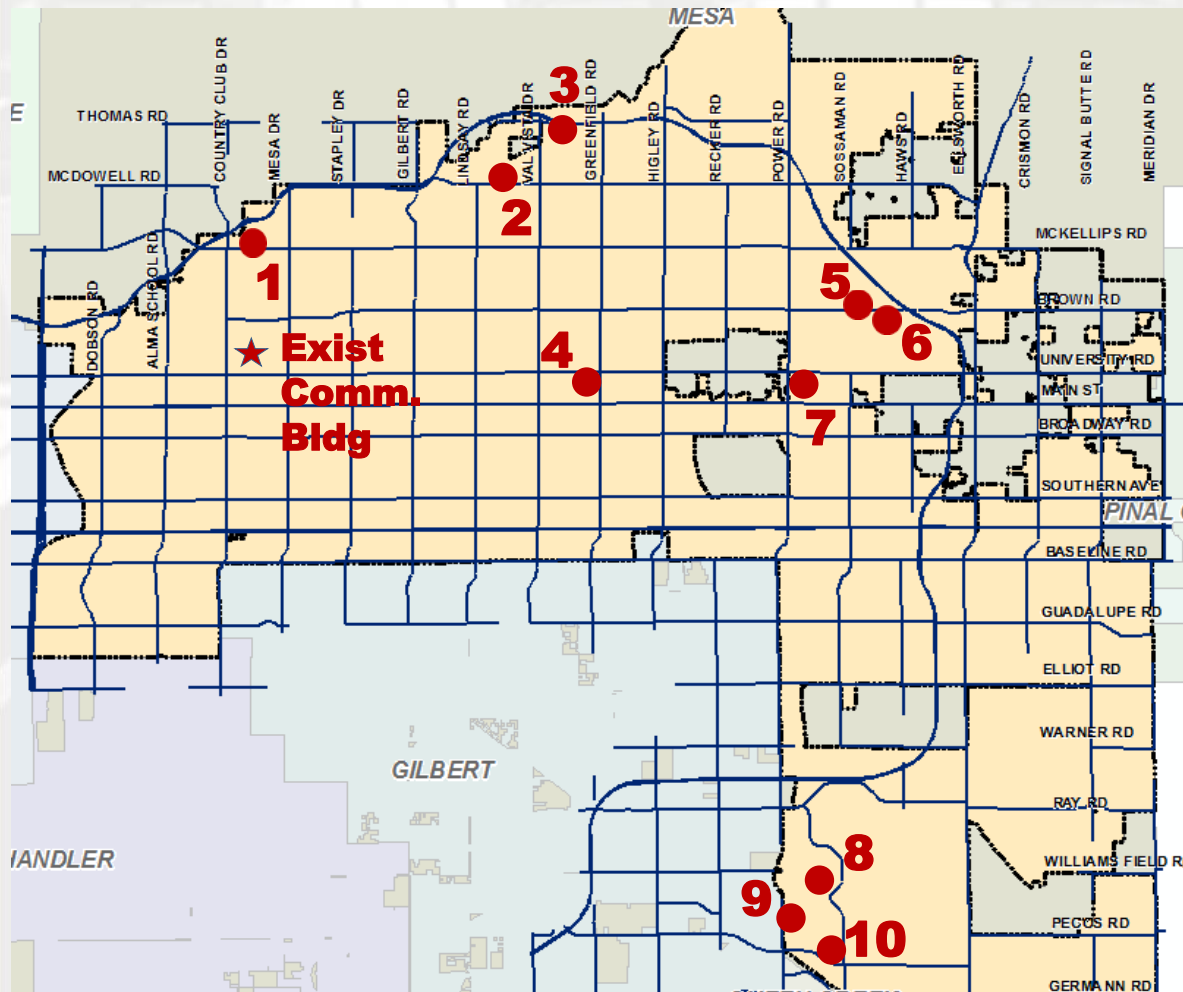
Site Evaluation Criteria

- Adequate Parcel Size
- Ease of Access
- Land Use Compatibility
- Existing Utility and Roadway Infrastructure
- Redundancy/Resiliency
- Review of Existing Site Conditions

Map of City-Owned Parcels



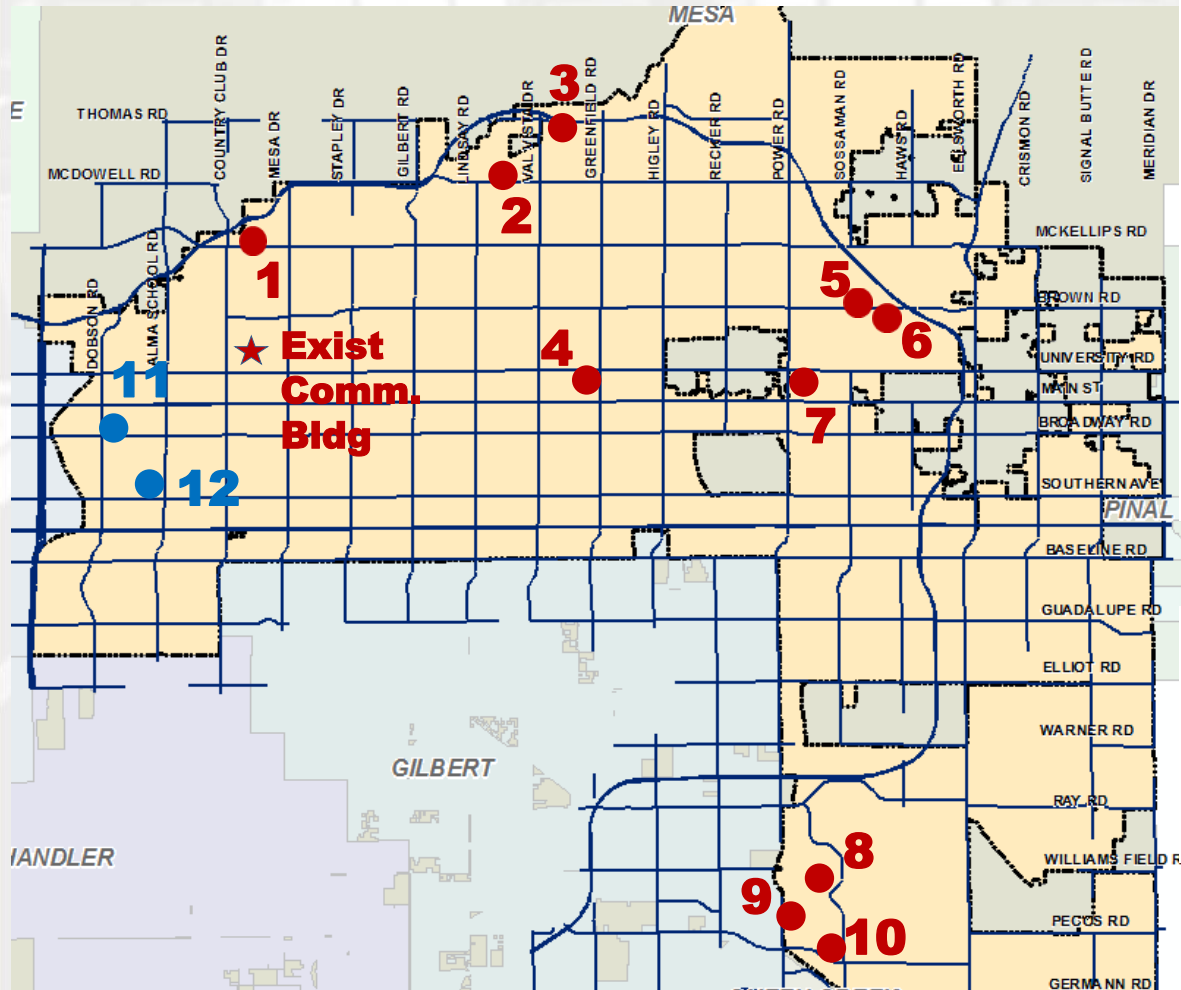
Sites Selected for Review



City Owned Sites

1. SWC Center and 202
2. NEC 32nd and McDowell (near Val Vista Water Treatment Plant)
3. Public Safety Training Facility
4. Red Mountain Police Sub-Station
5. NEC Brown and Sossaman
6. SWC Brown and 80th Street
7. SEC Adobe and Power (Red Mountain Library)
8. SWC Utah and Sossaman
9. SEC Old Pecos and Power
10. NWC Pecos and Sossaman

Sites Selected for Review



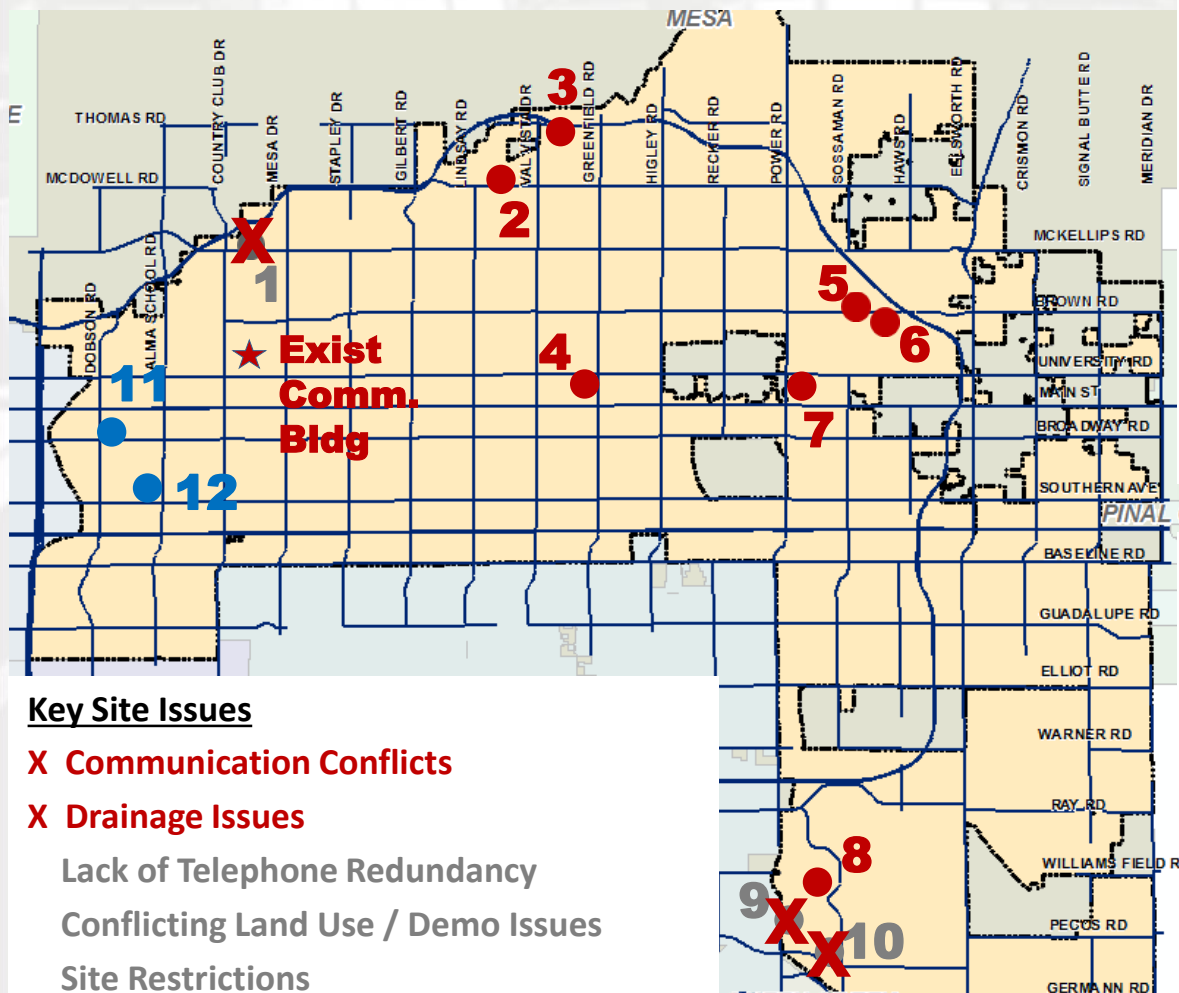
City Owned Sites

1. SWC Center and 202
2. NEC 32nd and McDowell (near Val Vista Water Treatment Plant)
3. Public Safety Training Facility
4. Red Mountain Police Sub-Station
5. NEC Brown and Sossaman
6. SWC Brown and 80th Street
7. SEC Adobe and Power (Red Mountain Library)
8. SWC Utah and Sossaman
9. SEC Old Pecos and Power
10. NWC Pecos and Sossaman

Non-City Owned Sites

11. NEC Dobson and Broadway
12. NWC Alma School and Southern

Sites Selected for Review



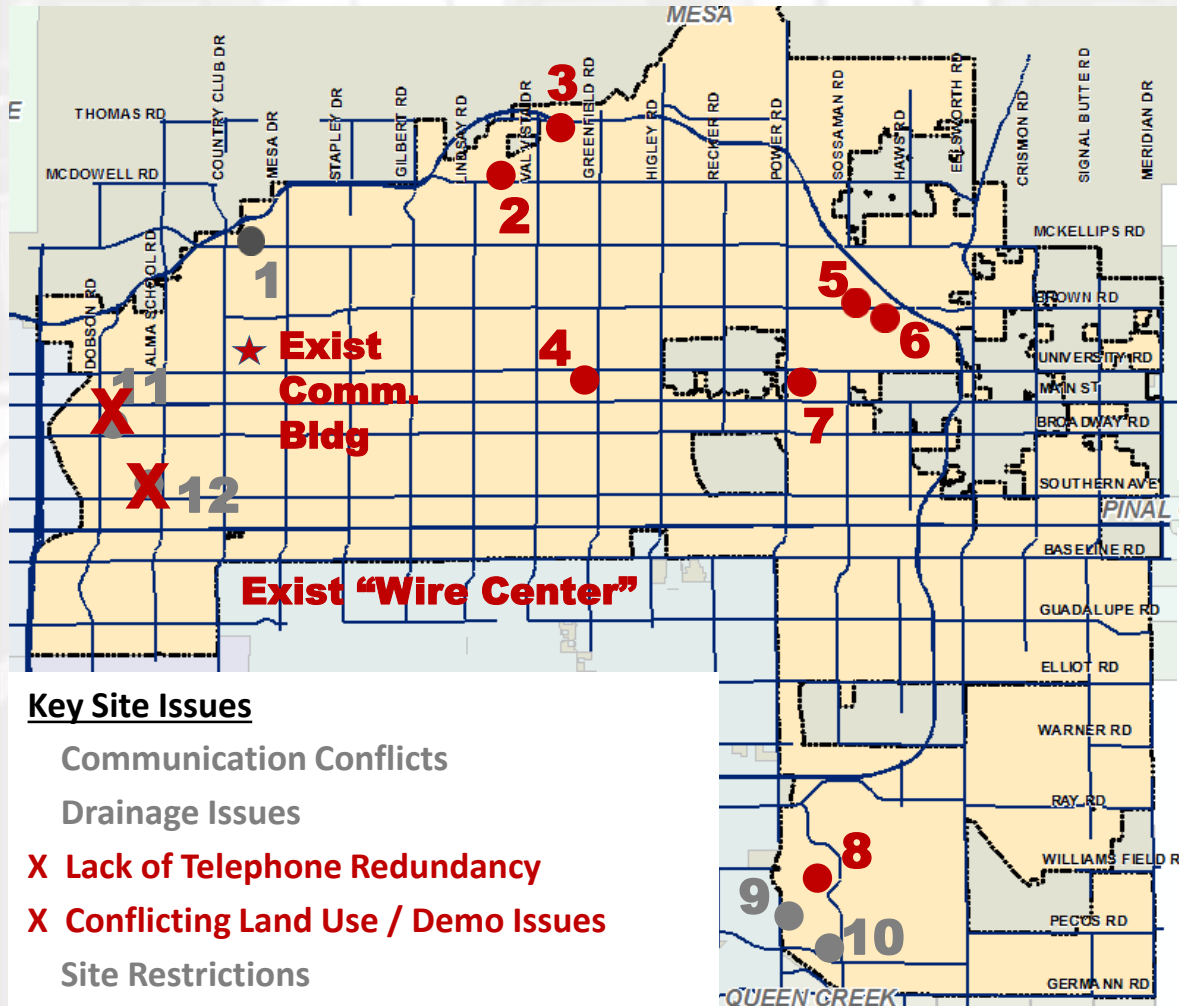
City Owned Sites

1. ~~SWC Center and 202~~
2. NEC 32nd and McDowell (near Val Vista Water Treatment Plant)
3. Public Safety Training Facility
4. Red Mountain Police Sub-Station
5. NEC Brown and Sossaman
6. SWC Brown and 80th Street
7. SEC Adobe and Power (Red Mountain Library)
8. SWC Utah and Sossaman
9. ~~SEC Old Pecos and Power~~
10. ~~NWC Pecos and Sossaman~~

Non-City Owned Sites

11. NEC Dobson and Broadway
12. NWC Alma School and Southern

Sites Selected for Review



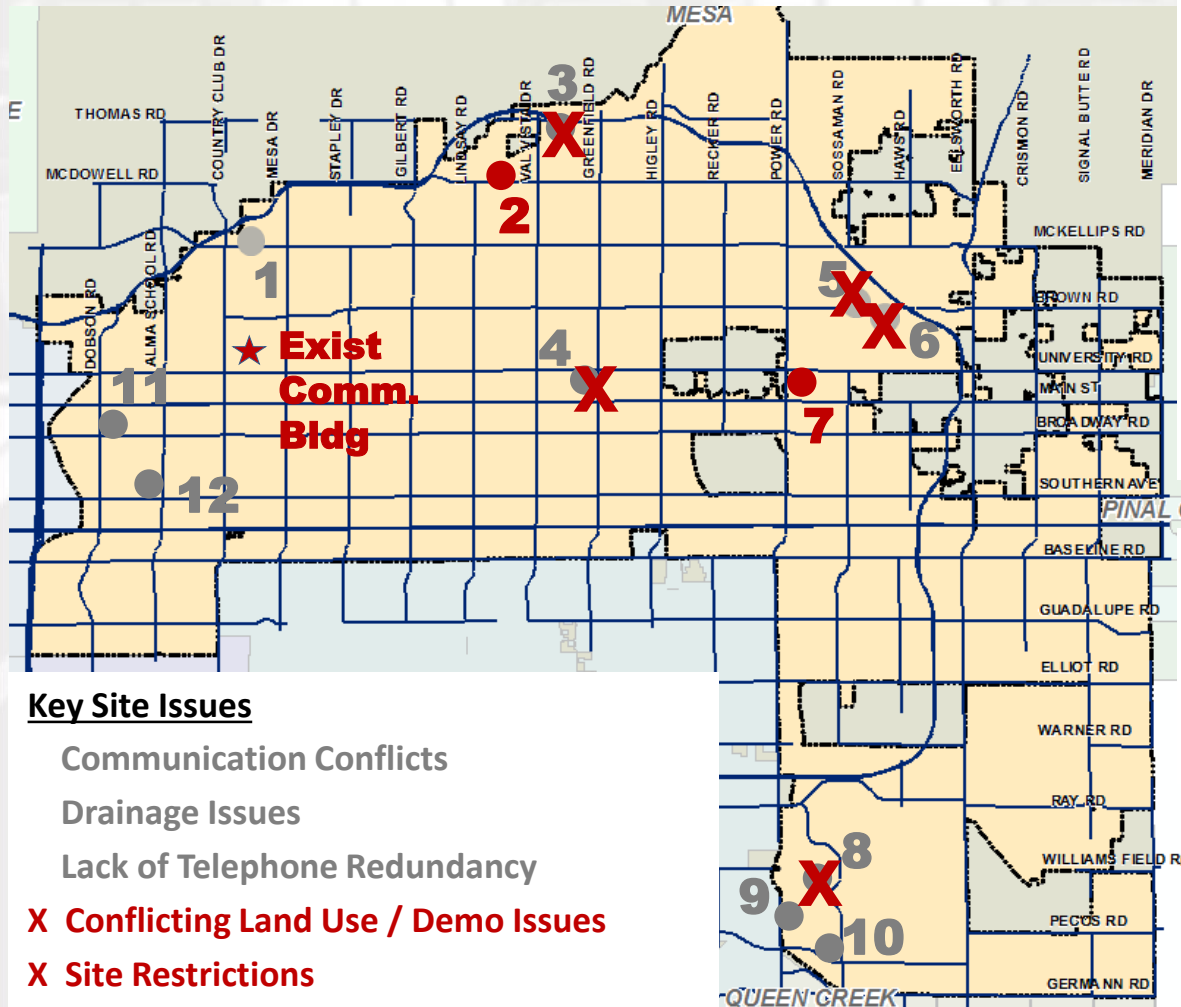
City Owned Sites

1. SWC Center and 202
2. NEC 32nd and McDowell (near Val Vista Water Treatment Plant)
3. Public Safety Training Facility
4. Red Mountain Police Sub-Station
5. NEC Brown and Sossaman
6. SWC Brown and 80th Street
7. SEC Adobe and Power (Red Mountain Library)
8. SWC Utah and Sossaman
9. SEC Old Pecos and Power
10. NWC Pecos and Sossaman

Non-City Owned Sites

11. NEC Dobson and Broadway
12. NWC Alma School and Southern

Sites Selected for Review



Key Site Issues

Communication Conflicts

Drainage Issues

Lack of Telephone Redundancy

X Conflicting Land Use / Demo Issues

X Site Restrictions

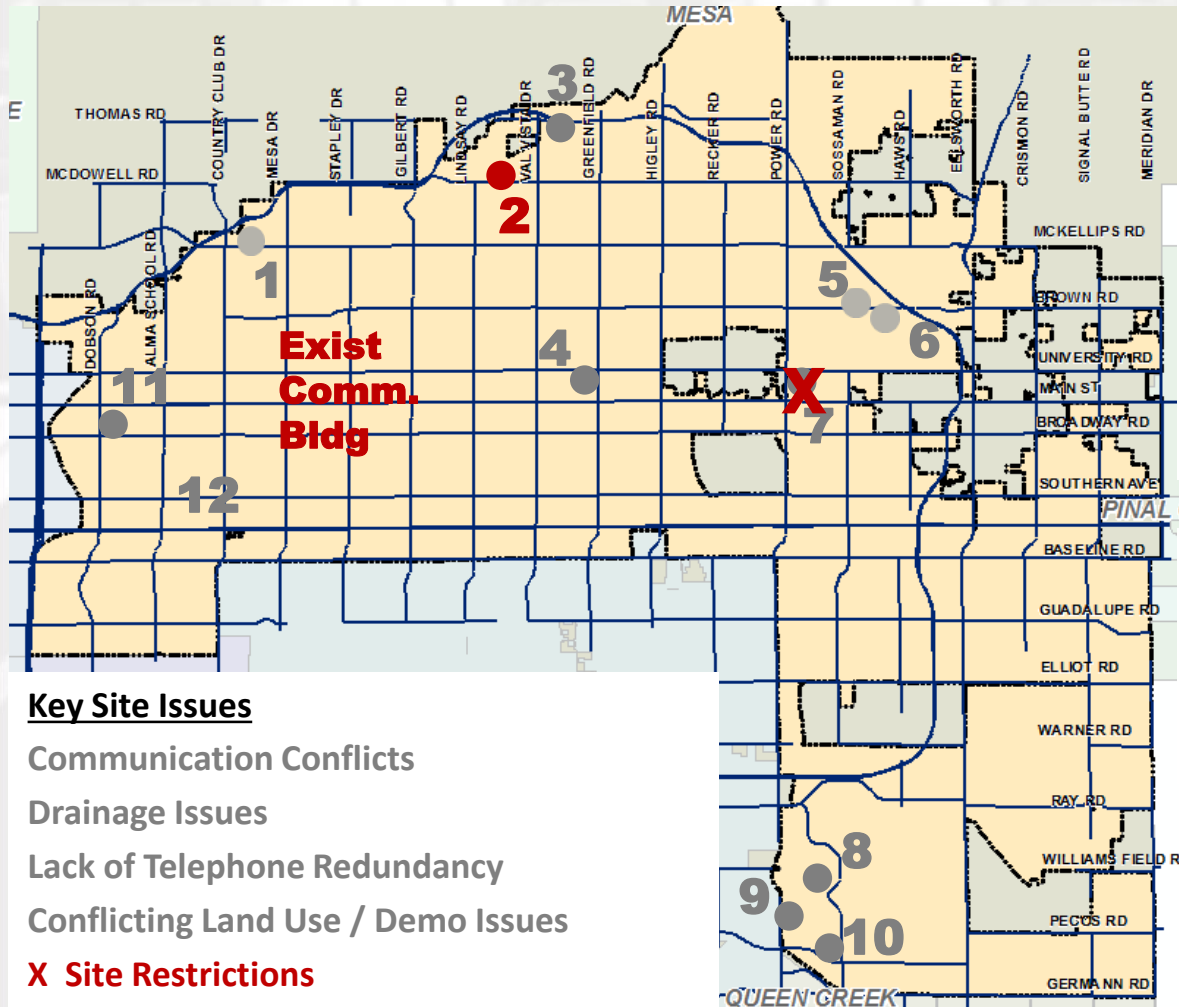
City Owned Sites

1. SWC Center and 202
2. NEC 32nd and McDowell (near Val Vista Water Treatment Plant)
3. Public Safety Training Facility
4. Red Mountain Police Sub Station
5. NEC Brown and Sossaman
6. SWC Brown and 80th Street
7. SEC Adobe and Power (Red Mountain Library)
8. SWC Utah and Sossaman
9. SEC Old Pecos and Power
10. NWC Pecos and Sossaman

Non-City Owned Sites

11. NEC Dobson and Broadway
12. NWC Alma School and Southern

Sites Selected for Review



City Owned Sites

1. SWC Center and 202
2. NEC 32nd and McDowell (near Val Vista Water Treatment Plant)
3. Public Safety Training Facility
4. Red Mountain Police Sub Station
5. NEC Brown and Sossaman
6. SWC Brown and 80th Street
7. SEC Adobe and Power (Red Mountain Library)
8. SWC Utah and Sossaman
9. SEC Old Pecos and Power
10. NWC Pecos and Sossaman

Non-City Owned Sites

11. NEC Dobson and Broadway
12. NWC Alma School and Southern

Site Recommendation

- ✓ No Acquisition Costs
- ✓ Limited Demolition
- ✓ Land Use Compatibility
- ✓ Freeway Access
- ✓ Communication Redundancy

NEC 32nd and McDowell
3200 E McDowell Road

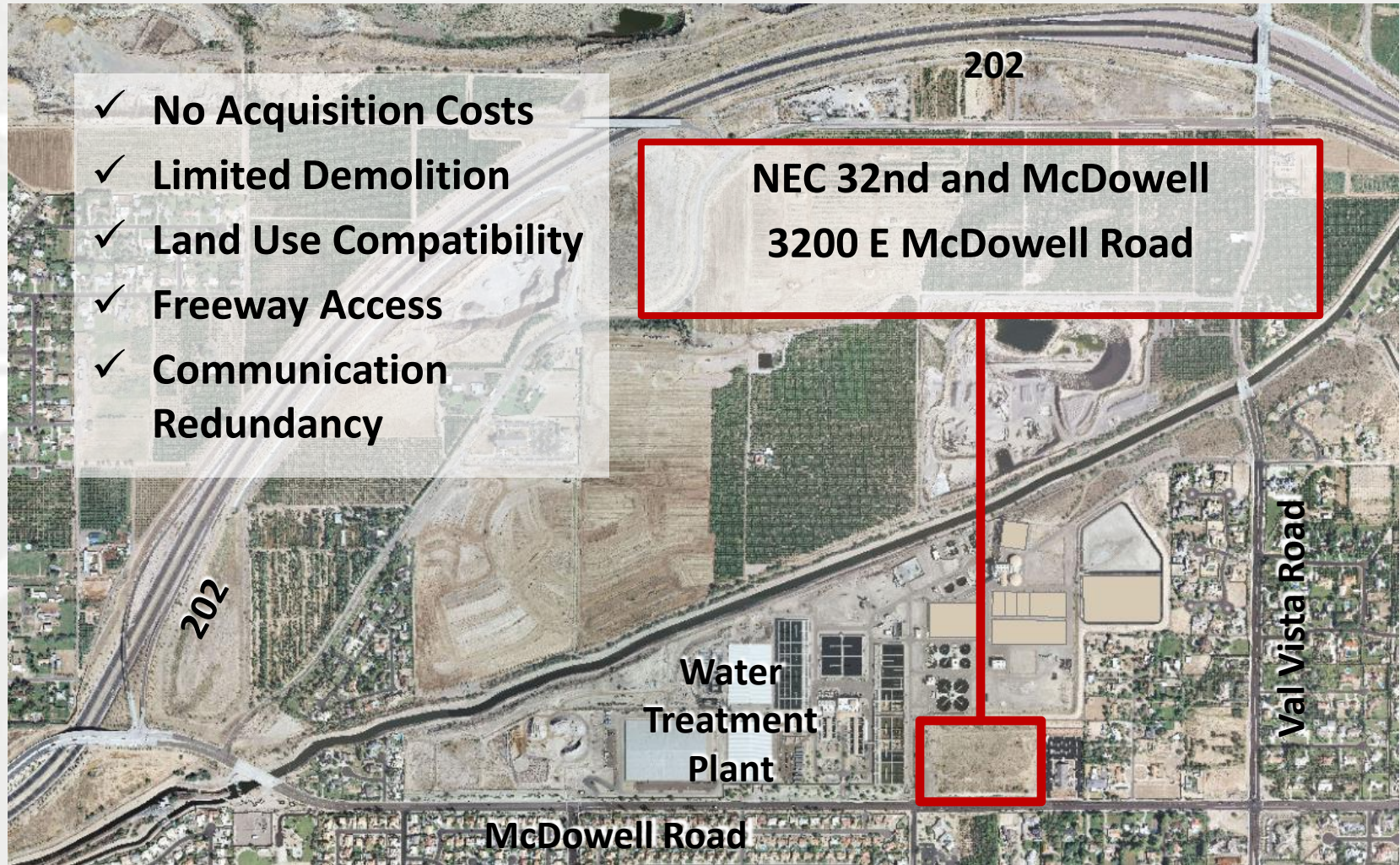
**Water
Treatment
Plant**

McDowell Road

Val Vista Road

202

202



NEC 32nd and McDowell Road



- Existing Offsite Street Improvements
- Utilities and Communication Infrastructure Available



- No Major Drainage Issues

Conceptual Site Plan-3200 E. McDowell Road

- 13.6 Acres Available
- Large Lot Available for Phased Development

A photograph of a person sitting at a large, curved desk in a control room or data center. The desk is equipped with several computer monitors displaying various data and charts. The person is seen from behind, wearing a dark jacket. The room is filled with similar workstations, suggesting a large-scale operation. The image is framed by a blue border.

Questions ?