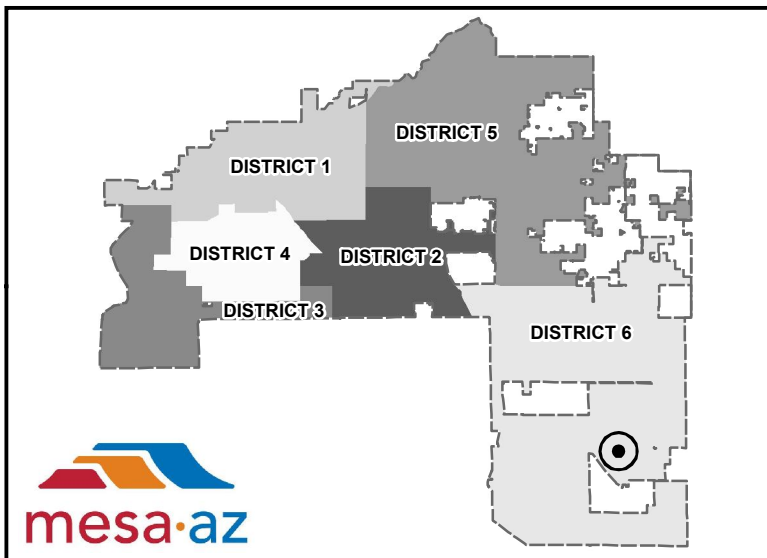
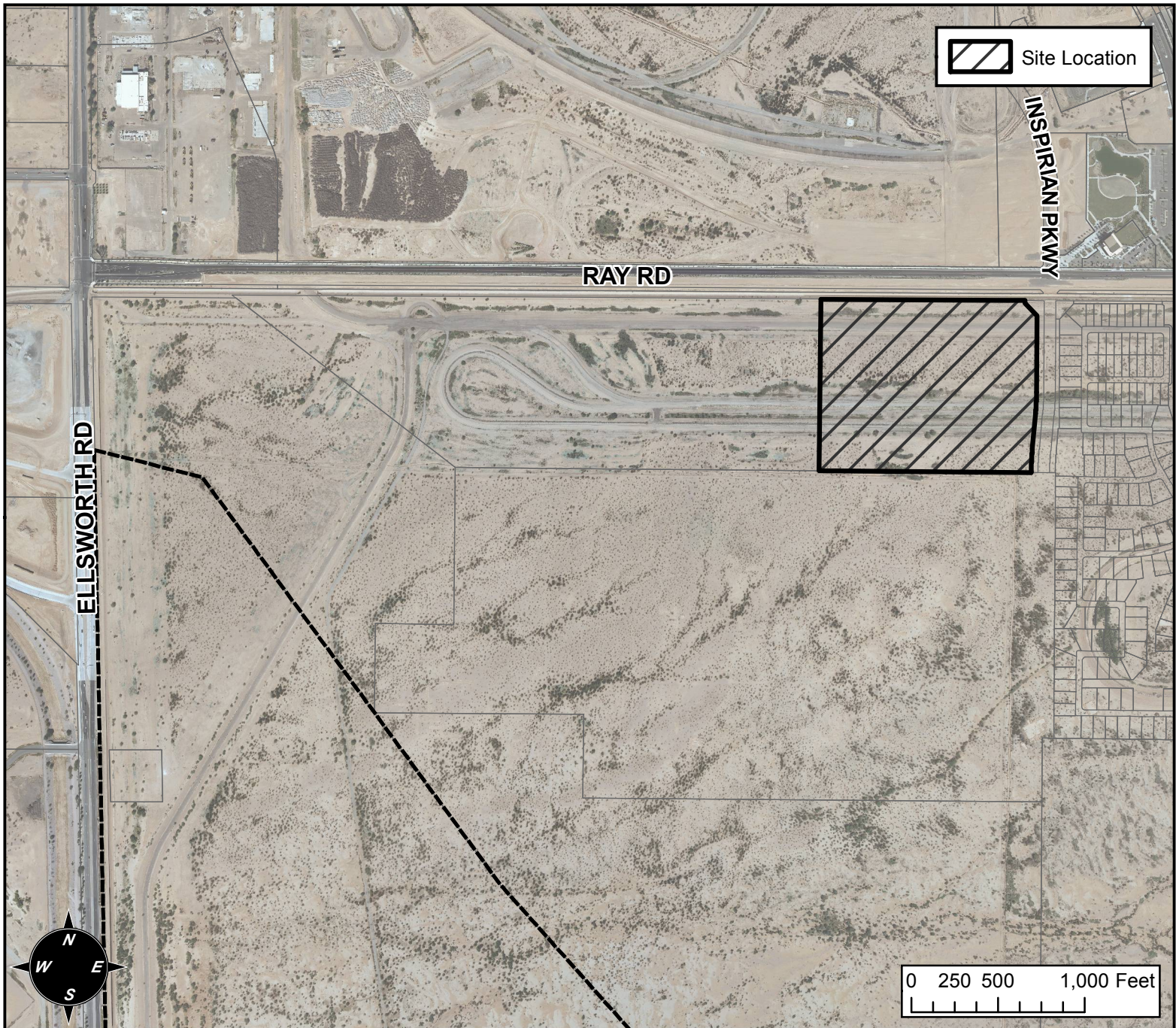


# PLANNING AND ZONING FINAL PLAT VICINITY MAP



## FINAL PLAT DETAILS

"FINAL PLAT OF EASTMARK DU-3 SOUTH PARCEL 3-3" - (DISTRICT 6) 9800 TO THE 10000 BLOCKS OF EAST RAY ROAD (SOUTH SIDE). LOCATED WEST OF CRISMON ROAD ON THE SOUTH SIDE OF RAY ROAD. 138 LOTS (30± ACRES). STEVE HAHN, MERITAGE HOMES, OWNER; ALBERTO GONZALEZ, ENTELLUS, INC., ENGINEER - (PLN2014-00099)