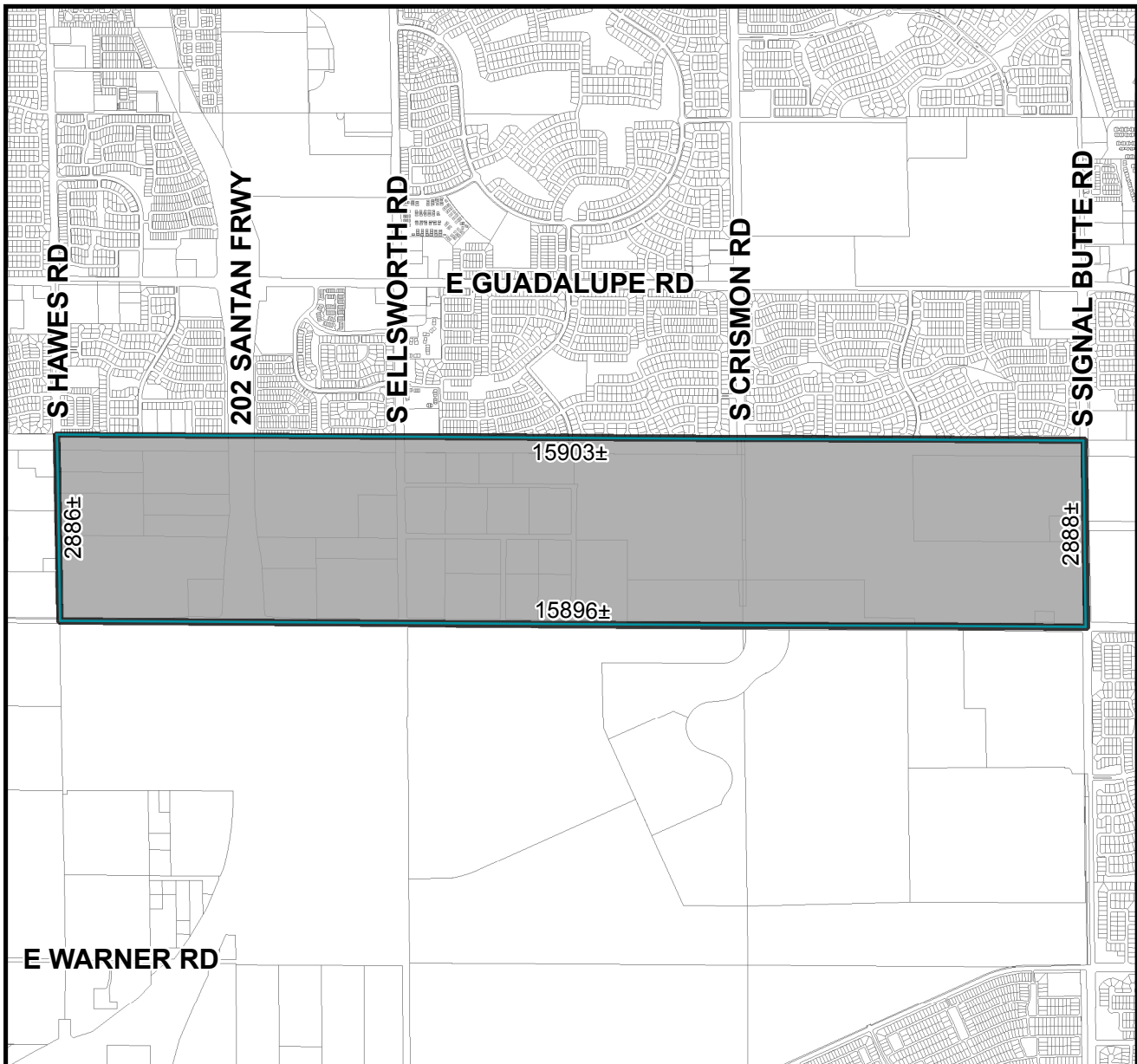




# OFFICIAL SUPPLEMENTARY ZONING MAP AMENDING THE CITY OF MESA ZONING MAP



CASE: Z14-045  
ACREAGE: 962.33± (1.5± SQ MI)  
REQUEST: REZONING TO CREATE THE ELLIOT ROAD TECHNOLOGY CORRIDOR PLANNED AREA DEVELOPMENT OVERLAY. THIS REQUEST WILL ESTABLISH A ZONING OVERLAY ON THE SITE TO GUIDE FUTURE DEVELOPMENT OF EMPLOYMENT USES.  
ORDINANCE: \_\_\_\_\_

Please be advised that the attached zoning changes were approved by the Mesa City Council on \_\_\_\_\_, 2014 by Ordinance # \_\_\_\_\_. If you have any questions concerning these changes, contact the City of Mesa Planning Division at 480-644-2385.

\_\_\_\_\_  
MAYOR

ATTEST: \_\_\_\_\_  
CITY CLERK

DATE: \_\_\_\_\_