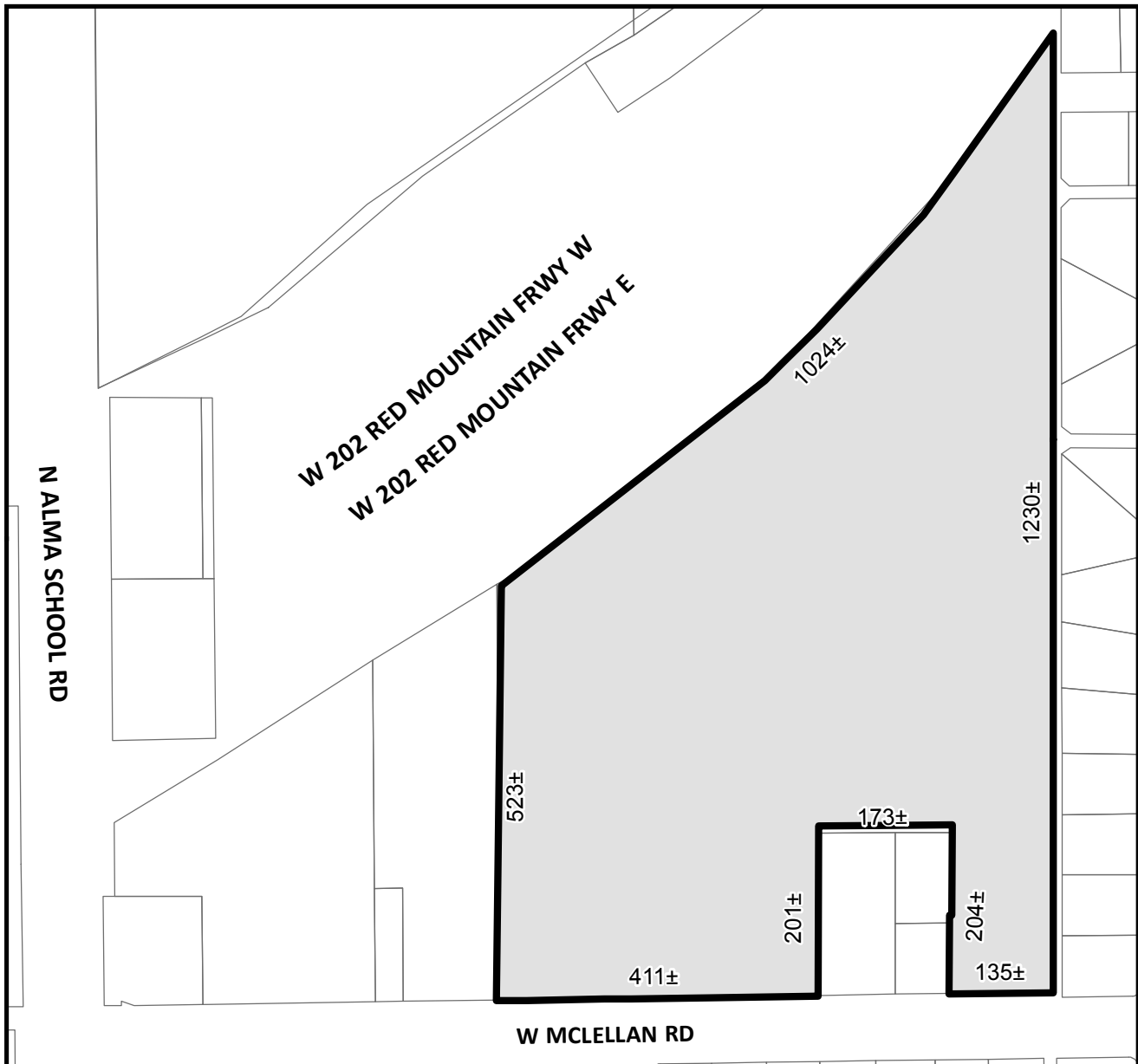




**OFFICIAL SUPPLEMENTARY ZONING MAP
AMENDING THE CITY OF MESA ZONING MAP**



CASE: Z14-029

ACREAGE: 12.8±

REQUEST: REZONE FROM RS-43 TO RSL4.5-PAD AND SITE PLAN REVIEW

ORDINANCE: _____

Please be advised that the attached zoning changes were approved by the Mesa City Council on _____, 2014 by Ordinance # _____. If you have any questions concerning these changes, contact the City of Mesa Planning Division at 480-644-2385.

ATTEST: _____ DATE: _____

MAYOR

CITY CLERK