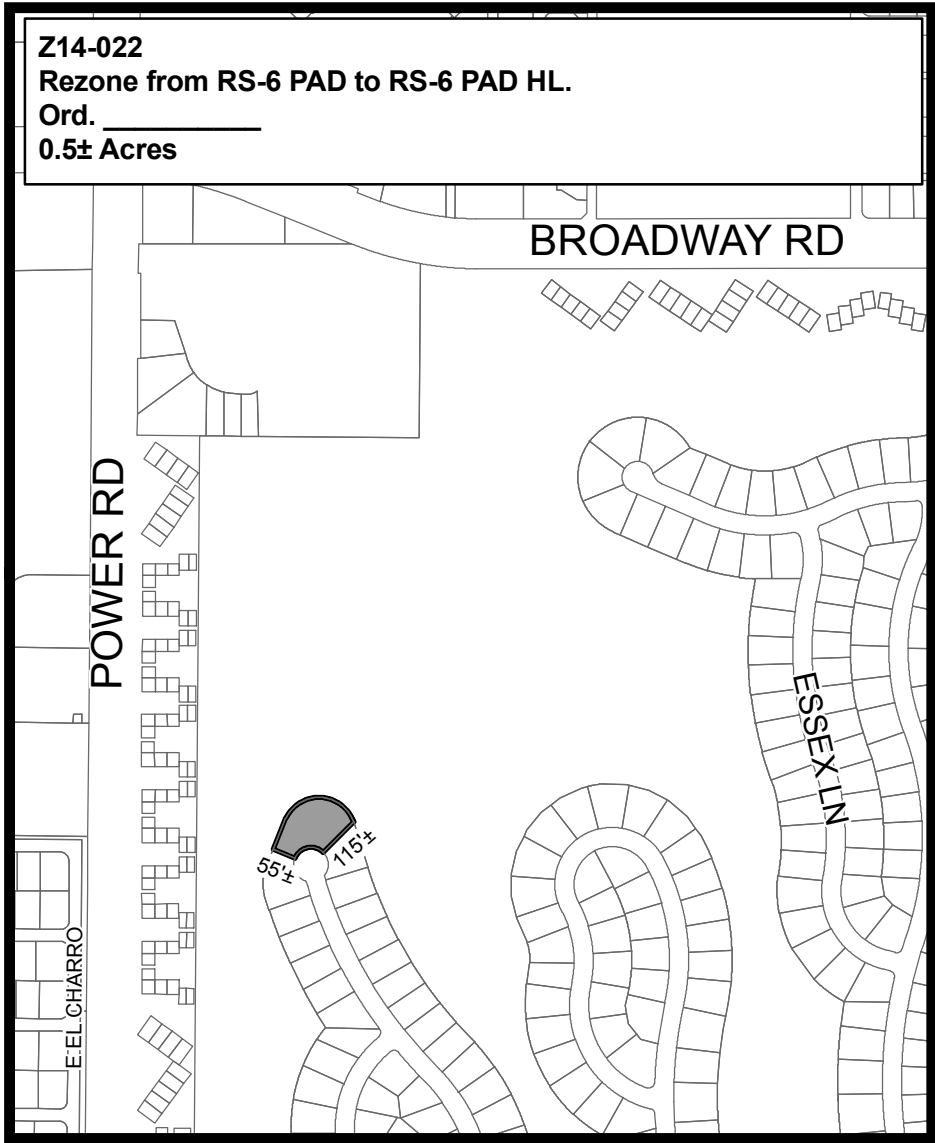


OFFICIAL SUPPLEMENTARY ZONING MAP
AMENDING THE CITY OF MESA ZONING MAP



Please be advised that the attached zoning changes were approved by the Mesa City Council on _____, 2014 by Ordinance # _____. If you have any questions concerning these changes, contact the City of Mesa Planning Division at 480-644-2385.

MAYOR

ATTEST: _____
CITY CLERK

DATE: _____