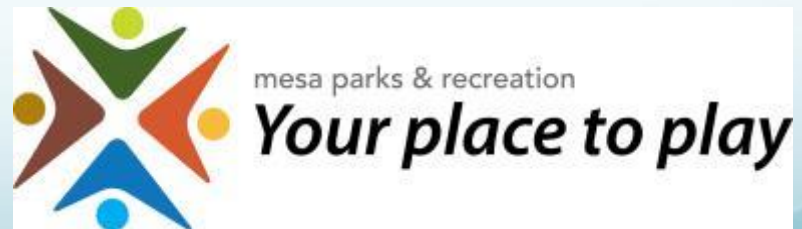


2012 Parks Bond Project Update

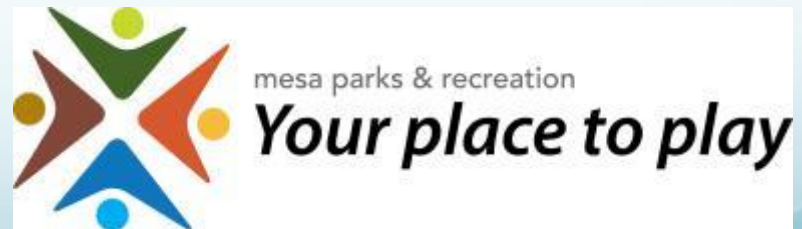
April 10, 2014



History

- Voters approve \$70 million Parks Bond in November 2012
- Program focused on five areas:
 1. Parks Conversion and Improvement Projects - \$7,250,000
 2. Community Partnership Projects - \$8,700,000
 3. iMesa Park Renovation and Enhancement Projects- \$37,800,000
 4. iMesa New Park Development Projects - \$10,750,000
 5. iMesa Bike and Pedestrian Path Projects - \$5,500,00
- Public meetings and stakeholder meetings are ongoing

Park Conversion and Improvement Projects



McDowell and Recker

- Public Meeting October 1 with 80 people
- Construction Period – May 2014 to October 2014
- Designer –Norris Design
- JOC – Valley Rain



Medina and Hawes

- Public Meeting - October 29
- Construction Period July 2014 to May 2015
- Designer – EPS
- Contractor – public bid
- \$50,000 grant from Arizona Sports and Tourism Authority



McKellips and Ellsworth

- Public Meeting – October & December 3
- Construction Period – August 2014 to June 2015
- Designer – Logan Simpson Design
- Contractor – public bid
- The United States Conference of Mayors and The Scotts Miracle-Gro Company's *GRO1000* Gardens and Green Spaces Program has awarded this location a \$40,000 grant.



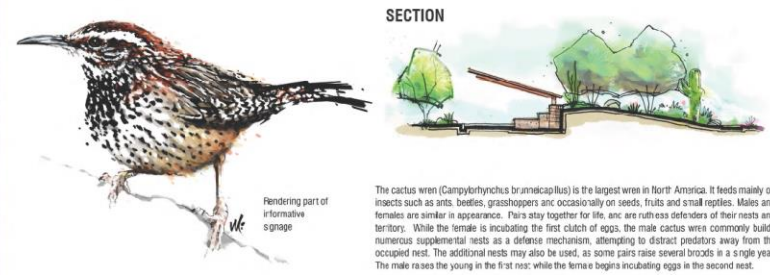
April 1 site dedication with USCM,
Scott Miracle Gro and Zaharis
Elementary



PRESERVATION THROUGH EXPERIENCE

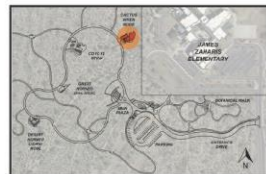
INTERACTIVE PLAY NODE

INSPIRED BY THE CACTUS WREN



The cactus wren (*Campylorhynchus brunneicapillus*) is the largest wren in North America. It feeds mainly on insects such as ants, beetles, grasshoppers and occasionally on seeds, fruits and small reptiles. Males and females are similar in appearance. Pairs stay together for life, and are ruthless defenders of their nests and territory. While the female is incubating the first clutch of eggs, the male cactus wren commonly builds numerous supplemental nests as a defense mechanism, attempting to distract predators away from the occupied nest. The additional nests may also be used, as some pairs raise several broods in a single year. The male raises the young in the first nest; while the female begins incubating eggs in the second nest.

KEY MAP



CONCEPTUAL NATURE PLAY OPPORTUNITIES



MCKELLIPS & ELLSWORTH PARK

CP0120

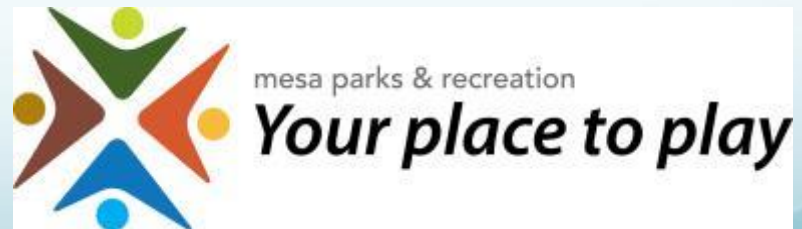
DECEMBER 2013

Park Conversion and Improvement Projects – Still to Come...

- Signal Butte and Elliott
 - Project scheduled June 2014 through September 2016



Community Partnership Projects



Mesa Jr. High

- Demolition by MPS – was completed in March 2014
- Maintenance by Mesa Parks to begin once transferred to City
- Stakeholder Meetings Ongoing
- Public Meeting Summer 2014
- Design & Construction Schedule to be determined
- Designer – EPS
- CMAR – Valley Rain

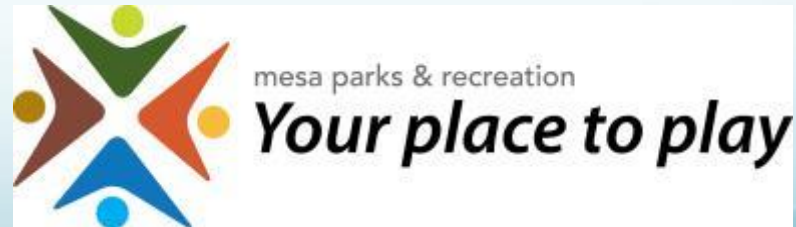


West Mesa Sports Complex Mesa Education Center/ Powell

- Public Meeting in February
- Construction to begin Fall/Winter 2014
- Stakeholder Meetings November/December 2013
- Designer – J2
- CMAR – DL Withers



iMesa Park and Renovation Projects



West Mesa Sports Complex Kleinman Park

- Public Meeting in February
- Local residents expressed concern about adding additional ball fields to this location
- Designer – J2
- CMAR – DL Withers



Pioneer Park

- Stakeholder Meeting October 22
 - Veterans, Save the Train, Horseshoe Club, Rose Gardeners, Pioneer Families, etc.
- Public Meeting January 7 and May
- Will not be moving monuments located along Main will focus on activating the park through play equipment and additional amenities and retaining large ramada's.
- Designer – Kimley-Horn
- CMAR – TBD



Museum and Cultural Resource Expansion

- National Park Service, State Historical Preservation Office and City working to modify deed so exterior design can proceed “as is”
- 100% design scheduled for completion in mid-April 2014
- Interior demolition completed in December 2013
- Current Project Scope Estimate - \$5.9 million

Total Project Budget - \$3 million

Project team is reviewing the scope

- Designer – Historic Streetscapes
- CMAR – Concord Construction



Riverview Sports Complex

- Utilizing existing softball fields
- Construction period April - October 2014.
- Designer – EEC
- CMAR – Haydon



Mesa High Aquatic Center

- Public Meeting date December 10, 2013
- Construction to begin June/July 2014
- Designer – Saemisch + DiBella
- CMAR – Sun Eagle



Mesa High Aquatic Center



Existing Park Improvements

- Playground Improvements
 - Emerald Playground – Summer 2014
 - Pequeño Park – Summer 2014
 - Porter Playground - \$20,000 Kaboom! Grant – April 26th – Community Build
 - Vista Monterey Playground – Summer 2014
- Ball Field Lighting
 - Escobedo Park – under construction
 - Taylor Jr High– under construction
 - Poston Jr High – under construction
- Irrigation Improvements
 - Sherwood Park – Fall 2014
 - Candlelight Park – Fall 2014



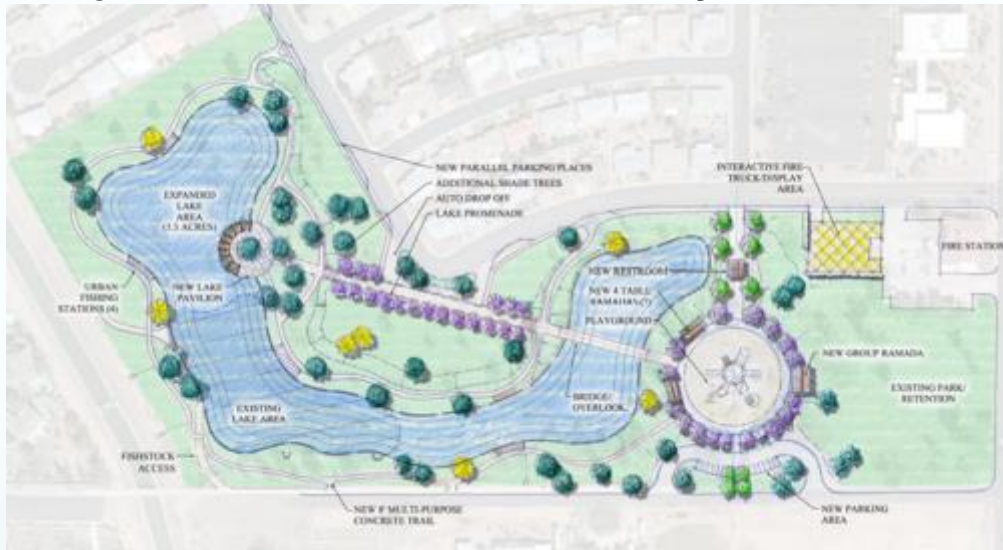
Existing Park Improvements

- Aquatics Facility Improvements
 - Carson – Plaster – underway
 - Fremont – Plaster – Underway



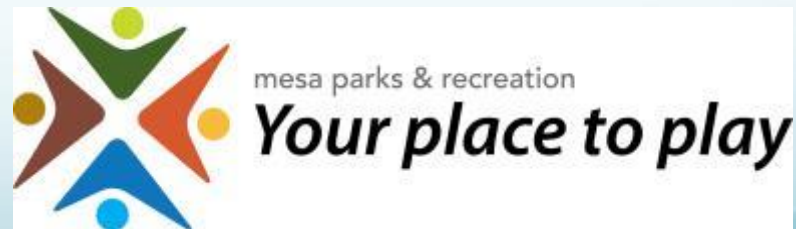
iMesa Park and Renovation Projects Still to Come...

- Greenfield Park
 - Project scheduled February 2015 through June 2017



- Ball field Lighting Improvements
- Playground Replacements
- Irrigation Improvements

iMesa New Park Development Projects



Monterey Park

- Land Acquisition – north and center parcels acquired
- Building demolition complete
- Parking lot installed which has relived parking that was occurring in the neighborhood
- northern trees installed
- Looking at possibly adding a disc golf course
- Future park amenities will require additional funding



Buckhorn Baths

- Land Acquisition – negotiations ongoing
- Environmental testing completed
- Designer and Contractor to be determined
- Design and Site Stabilization estimated schedule –
 - June 2014 through June 2016
- \$50,000 Grant from ADEQ



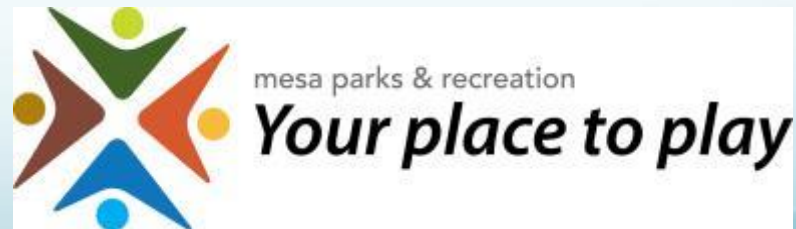
Mesa City Center

- Status Update -
 - RFQ was released on August 30, 2013
 - 18 responses from potential consultants received
 - Shortlist interviews held November 2013
 - Top three consultants (Colwell-Shelor, Otak, Woods-Bagot) selected and contracts in amount of \$25,000 have been executed.
- Each firm will complete an illustrative plan and a 15% design concept (constructability) report by Summer 2014. Stakeholder outreach anticipated for May 2014.
- ASU students and faculty in the Urban Planning program presented final concepts to City Council and staff at two meetings in January 2014.

Mesa City Center



iMesa Bike and Pedestrian Path Projects



iMesa Bike and Pedestrian Paths

- Riverview/Rio Salado Pathway
 - Designer – TY in and J2
 - Total Budget - \$1,676,499
 - \$1 million grant from ADOT
 - Currently under design
 - Construction – Complete Summer 2015



iMesa Bike and Pedestrian Paths

- West Mesa Connector
 - Project will also incorporate 10th Street Traffic Calming project to provide safe connections
 - The east end of this trail connects to the existing City of Mesa trail along the Cross-Cut Canal and the west ends connects to segment 3 of the Rio Salado Pathway
 - Designer – J2
 - Total Budget - \$3,420,000 Park Bond and \$1,200,000 Street Bond
 - Currently Under Design – Construction - complete early 2016

West Mesa Multi-Use Trails

■ Rio Salado Pathway Segment 3 ■ 10th Street Traffic Calming Project
■ Rio Salado Pathway Segment 4 ■ West Mesa Connector Trail



iMesa Bike and Pedestrian Paths Still to Come...

- Southeast Mesa Path
 - Designer – TBD
 - Construction – TBD
 - Total Budget - \$1,550,000
 - Project Dates – Beginning March 2015

Completed Projects

- Riverview Park
- Ball Field Lighting
 - Hawthorne Elementary - Complete
 - Fremont Jr. High – Complete
 - Evergreen Park – Complete
- Aquatics Facility Improvements
 - ADA Lifts – Complete
- Recreation Center Improvements
 - Red Mountain Center Wood Floors - Complete
 - Broadway Recreation Center Wood Floors – Complete

Questions?

