



1 FRONT ELEVATION - EAST
A2.0 1/4" = 1'-0"



2 NON-DRIVE-THRU ELEVATION - NORTH
A2.0 1/4" = 1'-0"

KEY NOTES:

- CB** CEMENT BOARD SIDING
COLOR: SHERWIN WILLIAMS SW7598 (SIERRA REDWOOD)
- CBP** CEMENT BOARD PANEL (NICHIBA - INDUSTRIAL)
COLOR: GRAY
- C1** ALUMINUM CANOPY SYSTEM W/FASCIA
COLOR: IRON ORE
- C2** ALUMINUM CANOPY SYSTEM
COLOR: IRON ORE
- C3** ALUMINUM CANOPY TIEBACK
COLOR: IRON ORE
GC TO PROVIDE CONTINUOUS BLOCKING ON WALL BEHIND TIEBACKS
- CJ** CONTROL JOINT
T-TYPE: 1 = STUCCO
- D** HOLLOW METAL DOOR
PAINT: 'GAUNTLET GREY' SW7019 BY SHERWIN WILLIAMS

- DE** DECAL BY GRAPHICS SUPPLIER
SURFACE APPLIED, FIELD INSTALLED, PRE CUT, PRE SPACED.
SUPPLIERS:
YOMELA (865) 330-7337, ann.bowen@yomela.com
GTI INTERNATIONAL (847) 543-4600, mcdonaldsdecor@gti.com
- EJ** EXPANSION JOINT, SEE DETAIL 7/A4.1
- E** STUCCO / WESTERN 1-KOTE (COLORS MATCH CENTER)
C1 COLOR:
C1 = WHITE
C2 = SHERWIN WILLIAMS SW6248 (JUBILEE)
C3 = IRON ORE
- FB**
CO2 = BULK CO2 FILL BOX (EOPM SCHEDULE ITEM 49.00)
BO = BULK OIL FILL BOX (EOPM SCHEDULE ITEM 700.16)

- GR** GUARD RAIL -SEE SITE PLAN FOR EXACT LOCATION AND LENGTH
PAINT: IRON ORE
- L1** RECESSED DOWN LIGHT FIXTURE - SEE ELECTRICAL
COLOR: GOLD
- L2** RADIAL SCONCE LIGHT FIXTURE - SEE ELECTRICAL
C1-COLOR:
C1= WHITE
C2= PLATINUM SILVER
- LE** ACCENT LIGHTING - SEE ELECTRICAL
L1-LED LIGHT:
L1 = SLIM LED (DOWN ONLY)
L2 = INTEGRAL CANOPY FIXTURE
L3 = UP ONLY FLOOD FIXTURE

- MF** METAL FASCIA (CUSTOM)
C1-TYPE:
1 = PRE-FAB ANCHOR-TITE FASCIA
2 = BOTTOM TRIM AT METAL REVEAL PANEL
3 = VERTICAL TRIM AT METAL REVEAL PANEL CORNERS, CLOSURES
COLOR:
C1= WEATHERED ZINC
C2= IRON ORE
- PB** PIPE BOLLARD - PAINTED YELLOW
- PT** (RHMIC) COIN COLLECTOR
MODEL #MPT STD
CALL 1-888-743-7435 TO ORDER

- RD** ROOF DRAIN PIPE PAINT TO MATCH SURROUNDING MATERIAL
- RO** ROOF DRAIN OVERFLOW PIPE PAINT TO MATCH SURROUNDING MATERIAL
- S** McDONALD'S SIGNAGE BY OTHERS - UNDER SEPARATE PERMIT.
C1-COLOR:
C3= YELLOW - PANTONE #1909U
C2= WHITE
- SB** STEEL I-BEAM TO MATCH CENTER
C1 = PAINT COLOR - IRON ORE
- UN** METAL UNDERSCORE
COLOR: GOLD

- W1** EXTERIOR WINDOW ASSEMBLY - TEMPERED GLASS
COLOR: EXTRA DARK BRONZE
- W2** DRIVE-THRU WINDOW BY READY ACCESS
MODEL: 600 SERIES, 36" SERVICE HEIGHT WITH TRANSOM, MANUAL OPEN; ELECTRONIC RELEASE
COLOR: DEEP BRONZE
XX-SLIDE DIRECTION: RL = RIGHT TO LEFT
LR = LEFT TO RIGHT

REV	DATE	DESCRIPTION	BY



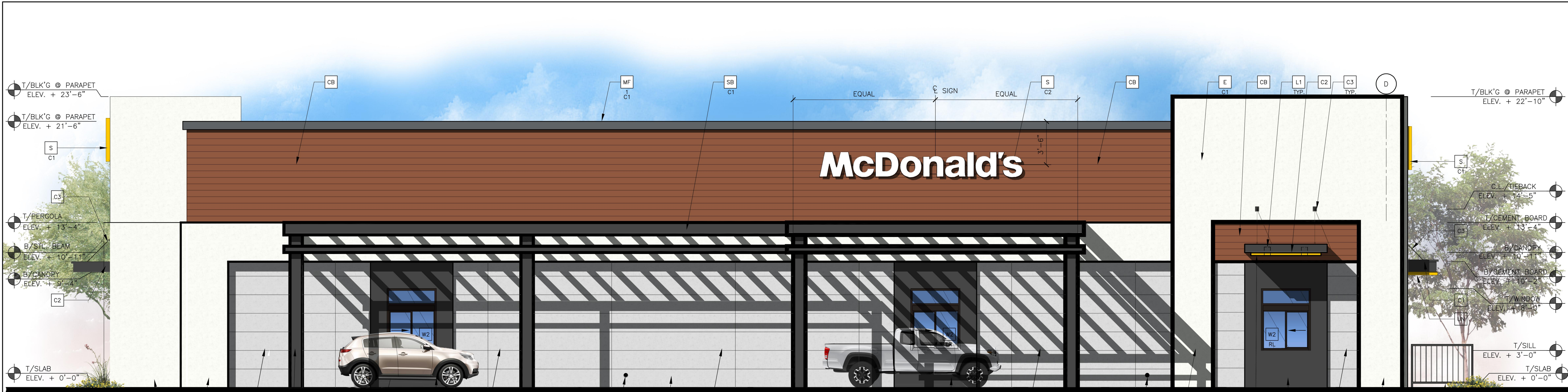
300 W. Clarendon Avenue
Suite 320
Phoenix, AZ 85013
O: 602.234.1868
F: 602.234.1413
KDF PROJECT NO. 20005



PREPARED FOR: **McDonald's USA, LLC**
These drawings and specifications are the confidential and proprietary property of McDonald's USA, LLC and shall not be copied or reproduced for use on any other project without the written consent of McDonald's USA, LLC. Use of these drawings and specifications on any other project is unauthorized. Reproduction of the contract documents for reuse on another project is not authorized.

DRAWN BY	STD ISSUE DATE	REVIEWED BY	DATE ISSUED
	2017-10	DF	xx/xx/xx

TITLE	2018 STANDARD BUILDING-BB20
DESCRIPTION	4597 - WOOD/WOOD
DESCRIPTION	WOOD BEARING WALLS
DESCRIPTION	WOOD ROOF TRUSS FRAMING
DESCRIPTION	STUCCO/METAL PANEL/COLORLED STONE
SHEET NO.	A2.0 ELEVATIONS
SITE ID	002-1012
SITE ADDRESS	1948 E. McKELLIPS RD. MESA, ARIZONA 85203





1 DRIVE THRU ELEVATION - SOUTH
 A2.1 1/4" = 1'-0"



2 REAR ELEVATION - WEST
 A2.1 1/4" = 1'-0"

KEY NOTES:

- | | | | | | |
|---|--|--|---|--|--|
| <p>CB CEMENT BOARD SIDING
 COLOR: SHERWIN WILLIAMS SW7598 (SIERRA REDWOOD)</p> <p>CBP CEMENT BOARD PANEL (NICHINA - INDUSTRIAL)
 COLOR: GRAY</p> <p>C1 ALUMINUM CANOPY SYSTEM W/FASCIA
 COLOR: IRON ORE</p> <p>C2 ALUMINUM CANOPY SYSTEM
 COLOR: IRON ORE</p> <p>C3 ALUMINUM CANOPY TIEBACK
 COLOR: IRON ORE
 GC TO PROVIDE CONTINUOUS BLOCKING ON WALL BEHIND TIEBACKS</p> <p>CJ CONTROL JOINT
 T-TYPE: 1 = STUCCO</p> <p>D HOLLOW METAL DOOR
 PAINT: "GAUNTLET GREY" SW7019 BY SHERWIN WILLIAMS</p> | <p>DE DECAL BY GRAPHICS SUPPLIER
 SURFACE APPLIED, FIELD INSTALLED, PRE CUT, PRE SPACED.
 SUPPLIERS:
 VOMELA (865) 330-7337, ann.bowen@vomela.com
 GTX INTERNATIONAL (847) 543-4600, mcdonaldsdecor@gtxi.com</p> <p>EJ EXPANSION JOINT, SEE DETAIL 7/A4.1</p> <p>E STUCCO / WESTERN 1-KOTE (COLORS MATCH CENTER)
 C1 COLOR:
 C1 = WHITE
 C2 = SHERWIN WILLIAMS SW6248 (JUBILEE)
 C3 = IRON ORE</p> <p>FB
 CO2 = BULK CO2 FILL BOX (EOPM SCHEDULE ITEM 49.00)
 BO = BULK OIL FILL BOX (EOPM SCHEDULE ITEM 700.18)</p> | <p>GR GUARD RAIL -SEE SITE PLAN FOR EXACT LOCATION AND LENGTH
 PAINT: IRON ORE</p> <p>L1 RECESSED DOWN LIGHT FIXTURE - SEE ELECTRICAL
 COLOR: GOLD</p> <p>L2 RADIAL SCONCE LIGHT FIXTURE - SEE ELECTRICAL
 C1-COLOR:
 C1 = WHITE
 C2 = PLATINUM SILVER</p> <p>LE ACCENT LIGHTING - SEE ELECTRICAL
 L1- LED LIGHT:
 L1 = SLIM LED (DOWN ONLY)
 L2 = INTEGRAL CANOPY FIXTURE
 L3 = UP ONLY FLOOD FIXTURE</p> | <p>MF METAL FASCIA (CUSTOM)
 C1-TYPE:
 1 = PRE-FAB ANCHOR-TITE FASCIA
 2 = BOTTOM TRIM AT METAL REVEAL PANEL
 3 = VERTICAL TRIM AT METAL REVEAL PANEL CORNERS, CLOSURES
 COLOR:
 C1 = WEATHERED ZINC
 C2 = IRON ORE</p> <p>PB PIPE BOLLARD - PAINTED YELLOW</p> <p>PT (RHM) COIN COLLECTOR
 MODEL #WPT STD
 CALL 1-888-743-7435 TO ORDER</p> | <p>RD ROOF DRAIN PIPE PAINT TO MATCH SURROUNDING MATERIAL</p> <p>RO ROOF DRAIN OVERFLOW PIPE PAINT TO MATCH SURROUNDING MATERIAL</p> <p>S McDONALD'S SIGNAGE BY OTHERS - UNDER SEPARATE PERMIT.
 C1-COLOR:
 C1 = YELLOW - PANTONE #109U
 C2 = WHITE</p> <p>SB STEEL I-BEAM TO MATCH CENTER
 C1 = PAINT COLOR - IRON ORE</p> <p>UN METAL UNDERSCORE
 COLOR: GOLD</p> | <p>W1 EXTERIOR WINDOW ASSEMBLY - TEMPERED GLASS
 COLOR: EXTRA DARK BRONZE</p> <p>W2 DRIVE-THRU WINDOW BY READY ACCESS
 MODEL: 600 SERIES, 36" SERVICE HEIGHT WITH TRANSOM, MANUAL OPEN; ELECTRONIC RELEASE
 XX-COLOR: DEEP BRONZE
 SLIDE DIRECTION: RL = RIGHT TO LEFT
 LR = LEFT TO RIGHT</p> |
|---|--|--|---|--|--|

BY	
REV	DATE
	
300 W. Clarendon Avenue Suite 320 Phoenix, AZ 85013 O: 602.234.1868 F: 602.234.1413 KDF PROJECT NO. 20085	
	
PREPARED FOR: McDonald's USA, LLC <small>These drawings and specifications are the confidential and proprietary property of McDonald's USA, LLC and shall not be copied or reproduced for use on this specific site in conjunction with its issue date and are not suitable for use on a different site or at a later time. Use of the services of properly licensed architects and engineers. Reproduction of the contract documents for use on another project is not authorized.</small>	
DRAWN BY: _____ STD ISSUE DATE: 2017-10 REVIEWED BY: DF DATE ISSUED: xx/xx/xx	TITLE: 2018 STANDARD BUILDING-BB20 4597- WOOD/WOOD DESCRIPTION: WOOD BEARING WALLS WOOD ROOF TRUSS FRAMING STUCCO/METAL PANEL/COLORLED STONE SITE ID: 002-1012 SITE ADDRESS: 1948 E. McKELLIPS RD. MESA, ARIZONA 85203
SHEET NO. A2.1 ELEVATIONS	



1948

Welcome



McDonald's

1948



EoS F

the UPS Store



McDonald's

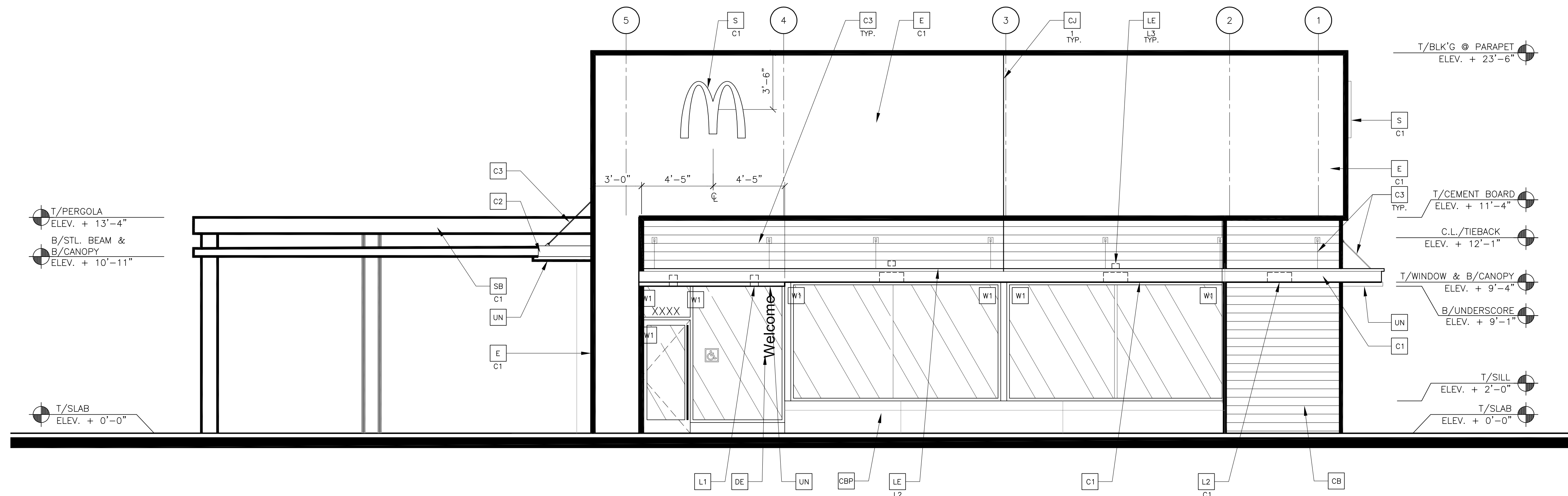


Order Here

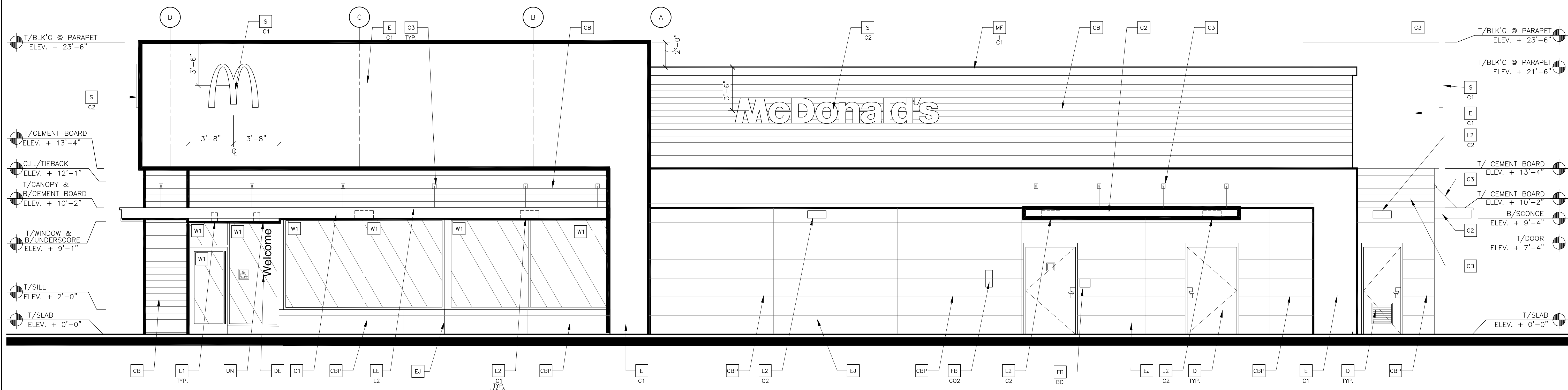
Drive-Thru
Clearance 9 Feet

Drive-Thru
Clearance 9 Feet





1 FRONT ELEVATION - EAST
1/4" = 1'-0"



2 NON-DRIVE-THRU ELEVATION - NORTH
1/4" = 1'-0"

KEY NOTES:

- CB** CEMENT BOARD SIDING
COLOR: SHERWIN WILLIAMS SW7598 (SIERRA REDWOOD)
- CBP** CEMENT BOARD PANEL (NICHIHA - INDUSTRIAL)
COLOR: GRAY
- C1** ALUMINUM CANOPY SYSTEM W/FASCIA
COLOR: IRON ORE
- C2** ALUMINUM CANOPY SYSTEM
COLOR: IRON ORE
- C3** ALUMINUM CANOPY TIEBACK
COLOR: IRON ORE
GC TO PROVIDE CONTINUOUS BLOCKING ON WALL BEHIND TIEBACKS
- CJ** CONTROL JOINT
T-TYPE: 1 = STUCCO
- D** HOLLOW METAL DOOR
PAINT: "GAUNTLET GREY" SW7019 BY SHERWIN WILLIAMS
- DE** DECAL BY GRAPHICS SUPPLIER
SURFACE APPLIED, FIELD INSTALLED, PRE CUT, PRE SPACED.
SUPPLIERS:
VOMELA (865) 330-7337, ann.bowen@vomela.com
GFX INTERNATIONAL (847) 543-4600, mcdonaldsdecor@gfxi.com
- EJ** EXPANSION JOINT. SEE DETAIL 7/A4.1
- E** STUCCO / WESTERN 1-KOTE (COLORS MATCH CENTER)
C1 COLOR:
C1 = WHITE
C2 = SHERWIN WILLIAMS SW6248 (JUBILEE)
C3 = IRON ORE
- FB** CO2 = BULK CO2 FILL BOX (EGPM SCHEDULE ITEM 49.00)
BO = BULK OIL FILL BOX (EGPM SCHEDULE ITEM 700.18)
- GR** GUARD RAIL - SEE SITE PLAN FOR EXACT LOCATION AND LENGTH
PAINT: IRON ORE
- L1** RECESSED DOWN LIGHT FIXTURE - SEE ELECTRICAL
COLOR: GOLD
- L2** RADIAL SCENCE LIGHT FIXTURE - SEE ELECTRICAL
C1 COLOR:
C1 = WHITE
C2 = PLATINUM SILVER
- LE** ACCENT LIGHTING - SEE ELECTRICAL
L1-LED LIGHT:
L1 = SLIM LED (DOWN ONLY)
L2 = INTEGRAL CANOPY FIXTURE
L3 = UP ONLY FLOOD FIXTURE
- MF** METAL FASCIA (CUSTOM)
C1 - TYPE:
1 = PRE-FAB ANCHOR-TIE FASCIA
2 = BOTTOM TRIM AT METAL REVEAL PANEL
3 = VERTICAL TRIM AT METAL REVEAL PANEL CORNERS, CLOSURES
COLOR:
C1 = WEATHERED ZINC
C2 = IRON ORE
- PB** PIPE BOLLARD - PAINTED YELLOW
- PT** (RMHC) COIN COLLECTOR
MODEL: #WPT STD
CALL 1-888-743-7435 TO ORDER
- RD** ROOF DRAIN PIPE PAINT TO MATCH SURROUNDING MATERIAL
- RO** ROOF DRAIN OVERFLOW PIPE PAINT TO MATCH SURROUNDING MATERIAL
- S** McDONALD'S SIGNAGE BY OTHERS - UNDER SEPARATE PERMIT.
C1 - COLOR:
C1 = YELLOW - PANTONE #109U
C2 = WHITE
- SB** STEEL I-BEAM TO MATCH CENTER
C1 = PAINT COLOR - IRON ORE
- UN** METAL UNDERSCORE
COLOR: GOLD
- W1** EXTERIOR WINDOW ASSEMBLY - TEMPERED GLASS
COLOR: EXTRA DARK BRONZE
- W2** DRIVE-THRU WINDOW BY READY ACCESS
MODEL: 600 SERIES, 36" SERVICE HEIGHT WITH TRANSOM, MANUAL OPEN, ELECTRONIC RELEASE
COLOR: DEEP BRONZE
SLIDE DIRECTION: RL = RIGHT TO LEFT
LR = LEFT TO RIGHT

ARCHITECTURAL GROUP, LLC
300 W. Clarendon Avenue
Suite 320
Phoenix, AZ 85013
O: 602.234.1868
F: 602.234.1413
KDF PROJECT NO. 2006

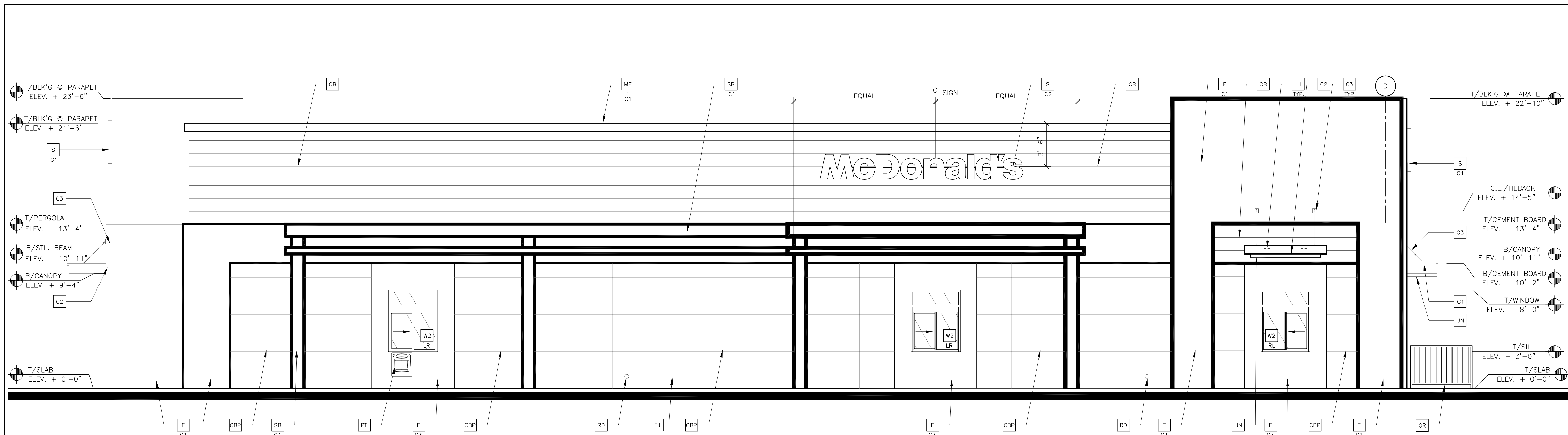
NOT FOR CONSTRUCTION
ARIZONA USA
Expires 12/31/20

McDonald's USA, LLC
These drawings and specifications are the confidential and proprietary property of McDonald's USA, LLC and shall not be copied or reproduced without written authorization. The contract documents were prepared for use on a different site or at a later time. Use of these drawings for reference or example on another project requires the contract documents for reuse on another project is not authorized.

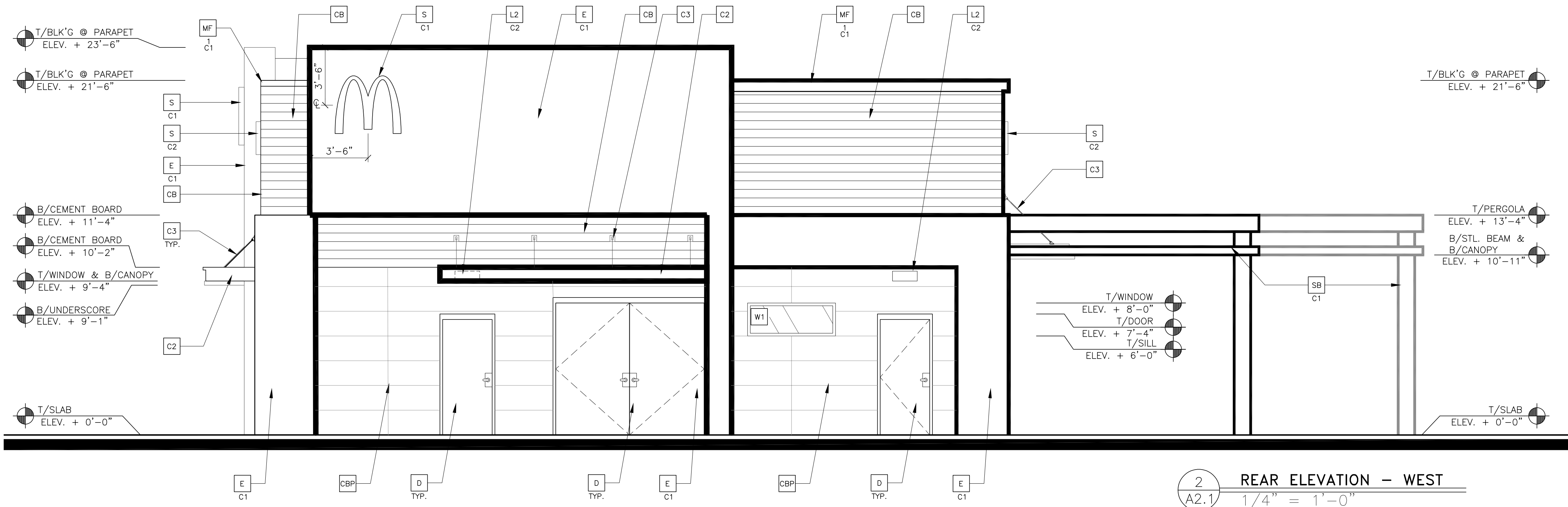
2018 STANDARD BUILDING-BB20
4597 - WOOD/WOOD
WOOD BEARING WALLS
WOOD ROOF TRUSS FRAMING
STUCCO/METAL PANEL/CULTURED STONE
SITE ADDRESS: 1948 E. McKELLIPS RD., MESA, ARIZONA 85203

DATE: 2017_10
REVIEWED BY: DF
DATE ISSUED: xx/xx/xx

SHEET NO. A2.0
ELEVATIONS



1 DRIVE THRU ELEVATION - SOUTH
 A2.1 1/4" = 1'-0"

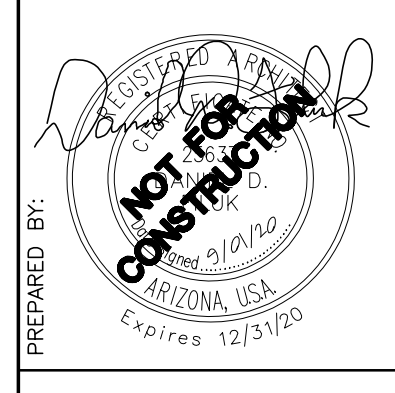


2 REAR ELEVATION - WEST
 A2.1 1/4" = 1'-0"

KEY NOTES:

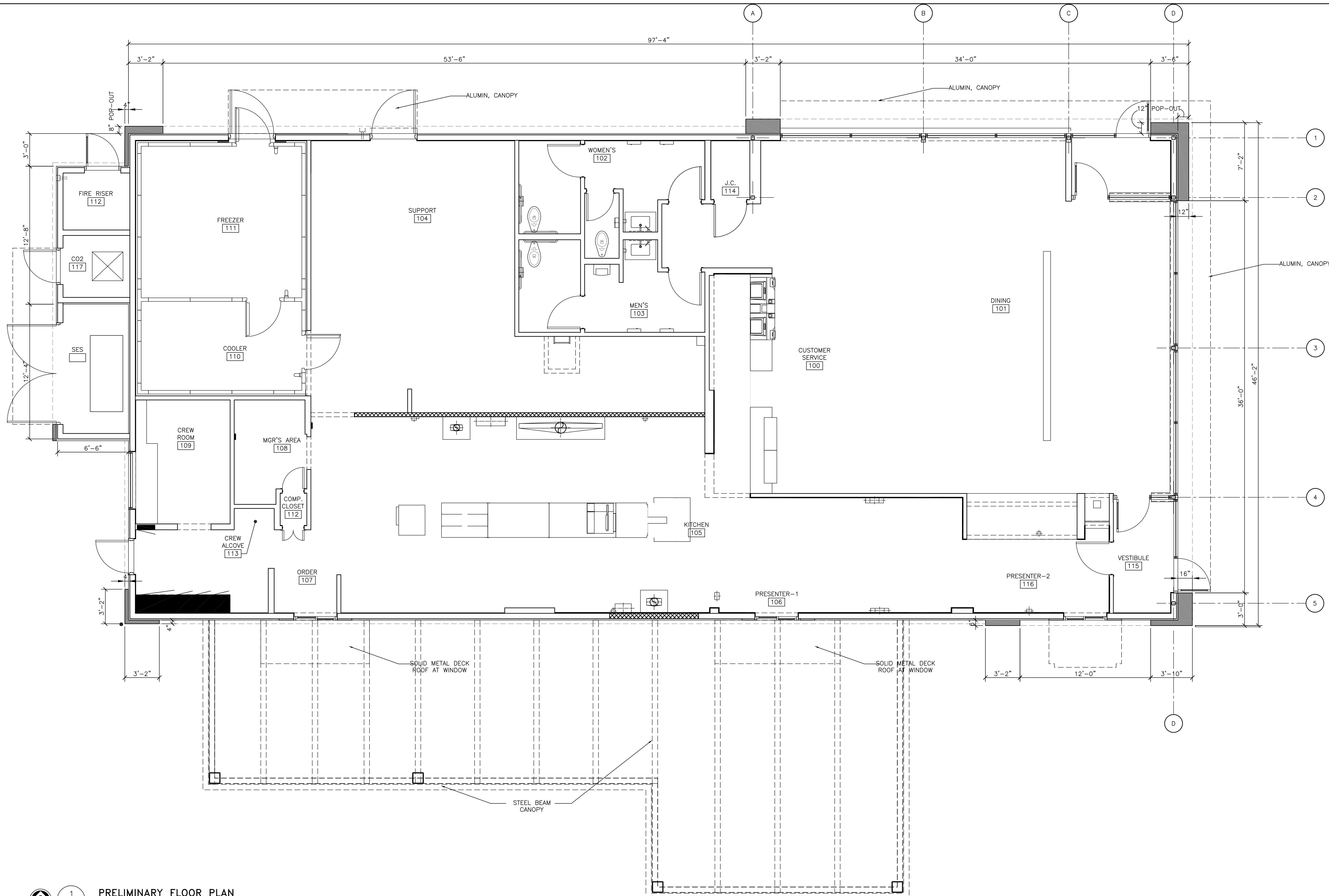
- CB CEMENT BOARD SIDING
 COLOR: SHERWIN WILLIAMS SW7598 (SIERRA REDWOOD)
- CBP CEMENT BOARD PANEL (NICHHA - INDUSTRIAL)
 COLOR: GRAY
- C1 ALUMINUM CANOPY SYSTEM W/FASCIA
 COLOR: IRON ORE
- C2 ALUMINUM CANOPY SYSTEM
 COLOR: IRON ORE
- C3 ALUMINUM CANOPY TIEBACK
 COLOR: IRON ORE
- CJ CONTROL JOINT
 T-TYPE: 1 = STUCCO
- D HOLLOW METAL DOOR
 PAINT: "GAUNTLET GREY" SW7019 BY SHERWIN WILLIAMS
- DE DECAL BY GRAPHICS SUPPLIER
 SURFACE APPLIED, FIELD INSTALLED, PRE CUT, PRE SPACED.
 SUPPLIERS:
 VOMELA (865) 330-7337, ann.bowen@vomela.com
 GFX INTERNATIONAL (847) 543-4600, mcdonaldsdecors@gfxi.com
- EJ EXPANSION JOINT. SEE DETAIL 7/A4.1
- E STUCCO / WESTERN 1-KOTE (COLORS MATCH CENTER)
 C1 COLOR:
 C1 = WHITE
 C2 = SHERWIN WILLIAMS SW6248 (JUBILEE)
 C3 = IRON ORE
- FB CO2 - CO2 = BULK CO2 FILL BOX (EOPM SCHEDULE ITEM 49.00)
 BO = BULK OIL FILL BOX (EOPM SCHEDULE ITEM 700.18)
- GR GUARD RAIL - SEE SITE PLAN FOR EXACT LOCATION AND LENGTH
 PAINT: IRON ORE
- L1 RECESSED DOWN LIGHT FIXTURE - SEE ELECTRICAL
 COLOR: GOLD
- L2 RADIAL SCONCE LIGHT FIXTURE - SEE ELECTRICAL
 C1 COLOR:
 C1 = WHITE
 C2 = PLATINUM SILVER
- LE ACCENT LIGHTING - SEE ELECTRICAL
 L1 - LED LIGHT:
 L1 = SLM LED (DOWN ONLY)
 L2 = INTEGRAL CANOPY FIXTURE
 L3 = UP ONLY FLOOD FIXTURE
- MF METAL FASCIA (CUSTOM)
 C1 - TYPE:
 1 = PRE-FAB ANCHOR-TITE FASCIA
 2 = BOTTOM TRIM AT METAL REVEAL PANEL
 3 = VERTICAL TRIM AT METAL REVEAL PANEL CORNERS, CLOSURES
 COLOR:
 C1 = WEATHERED ZINC
 C2 = IRON ORE
- PB PIPE BOLLARD - PAINTED YELLOW
- PT (RMHC) COIN COLLECTOR
 MODEL: #WPT STD
 CALL 1-888-743-7435 TO ORDER
- RD ROOF DRAIN PIPE PAINT TO MATCH SURROUNDING MATERIAL
- RO ROOF DRAIN OVERFLOW PIPE PAINT TO MATCH SURROUNDING MATERIAL
- S McDONALD'S SIGNAGE BY OTHERS - UNDER SEPARATE PERMIT.
 C1 - COLOR:
 C1 = YELLOW - PANTONE #109U
 C2 = WHITE
- SB STEEL I-BEAM TO MATCH CENTER
 C1 = PAINT COLOR - IRON ORE
- UN METAL UNDERSCORE
 COLOR: GOLD
- W1 EXTERIOR WINDOW ASSEMBLY - TEMPERED GLASS
 COLOR: EXTRA DARK BRONZE
- W2 DRIVE-THRU WINDOW BY READY ACCESS
 MODEL: 600 SERIES, 36" SERVICE HEIGHT WITH TRANSOM, MANUAL
 OPEN, ELECTRONIC RELEASE
 COLOR: DEEP BRONZE
 SLIDE DIRECTION: RL = RIGHT TO LEFT
 LR = LEFT TO RIGHT

REV	DATE	DESCRIPTION	BY



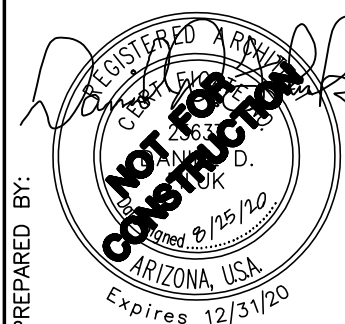
PREPARED BY: **McDonald's USA, LLC**
 These drawings and specifications are the confidential and proprietary property of McDonald's USA, LLC and shall not be copied or reproduced without written authorization. The contract documents were prepared by McDonald's USA, LLC and shall not be used on any other project without the written consent of McDonald's USA, LLC. Use of these drawings for reference or as a guide on another project requires the approval of McDonald's USA, LLC. The contract documents for use on another project are not authorized.

TITLE	2018 STANDARD BUILDING-BB20
DATE	2017_10
REVIEWED BY	DF
DATE ISSUED	xx/xx/xx
DRAWN BY	
STD ISSUE DATE	2017_10
DESCRIPTION	WOOD BEARING WALLS WOOD ROOF TRUSS FRAMING STUCCO/METAL PANEL/CULTURED STONE
SITE ADDRESS	1948 E. McKELLIPS RD. MESA, ARIZONA 85203
SHEET NO.	A2.1
ELEVATIONS	



1 PRELIMINARY FLOOR PLAN
 A1.0 1/4"=1'-0"

TITLE	2018 STANDARD BUILDING-BB20	DATE	2017-10
SHEET NO.	A1.0	ISSUE	1.0
DESCRIPTION	WOOD BEARING WALLS WOOD ROOF TRUSS FRAMING STUCCO/METAL PANEL/CULTURED STONE	REVIEWED BY	DF
SITE ID	002-1012	DATE ISSUED	xx/xx/xx
SITE ADDRESS	1948 E. MCKELLIPS RD. MESA, ARIZONA 85203	BY	
REV		DATE	
DESCRIPTION			



McDonald's USA, LLC
 These drawings and specifications are the confidential and proprietary property of McDonald's USA, LLC and shall not be copied or reproduced without written authorization. The contract documents were prepared for use on a different site or at a later time. Use of these drawings for reference or example on another project requires the contract documents for reuse on another project is not authorized.

