



# Design Review Board



# DRB23-00917

## Starbucks

Charlotte Bridges, Planner II

March 12, 2024



# Request

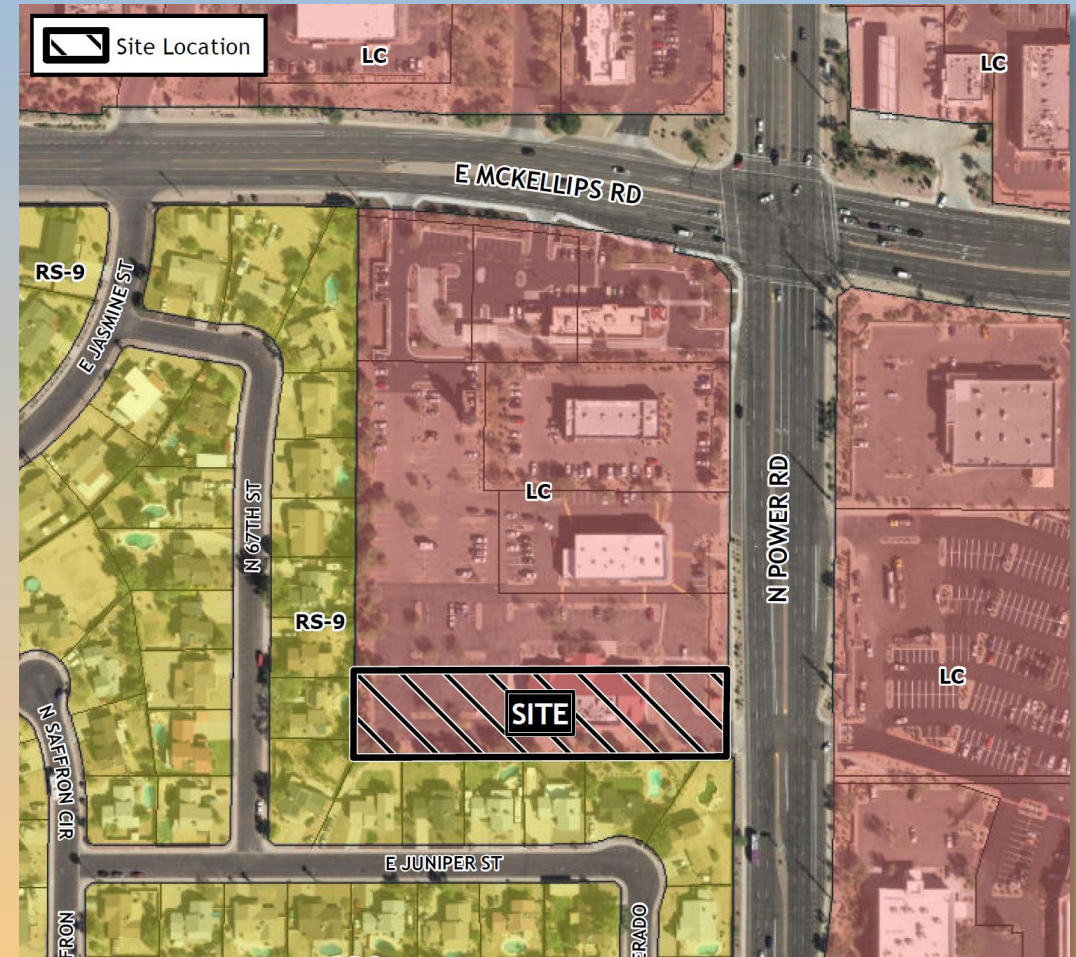
- Design Review
- To allow a restaurant with drive-thru





# Location

- South of McKellips Road
- West side of Power Road





# Site Photo

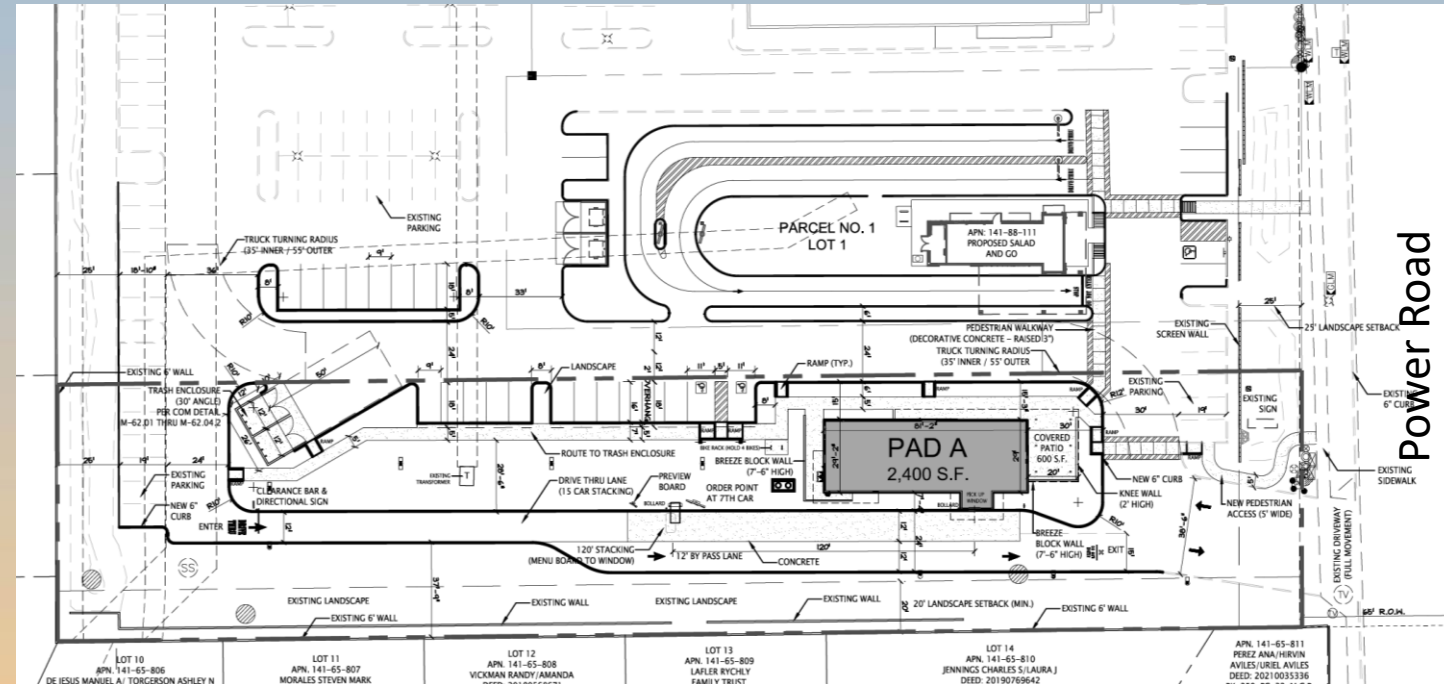


Looking west from Power Road



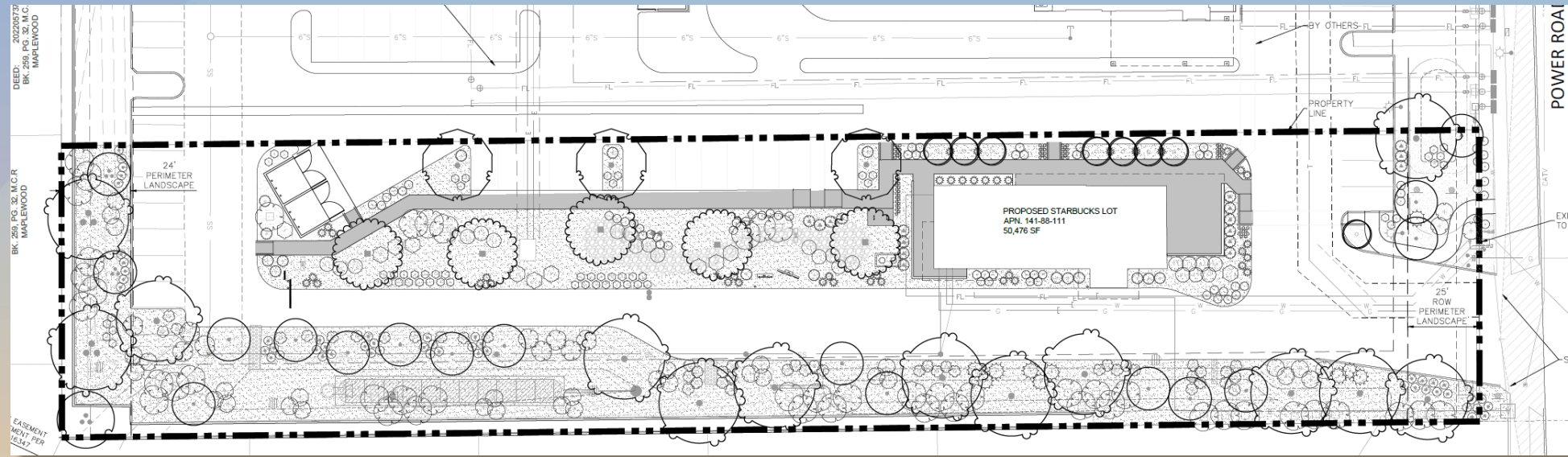
# Site Plan

- New 2,400 square foot building
- Access drive from Power Road and cross access with adjacent commercial center to additional access drives
- 27 parking spaces provided
- Drive-thru lane facility





# Landscape Plan



**PLANT SCHEDULE**

SYMBOL	BOTANICAL / COMMON NAME	SIZE	SQ FT	QTY	SYMBOL	BOTANICAL / COMMON NAME	SIZE	SQ FT	QTY	SYMBOL	BOTANICAL / COMMON NAME	SIZE	SQ FT	QTY	
<b>TREES</b>															
	<i>Acacia farnesiana</i> Sweet Acacia	EXTANT-TO REMAIN	50	1		<i>Eberopsis elaeagnifolia</i> Texas Ebony	24" Box	100	15		<i>Eberopsis elaeagnifolia</i> Texas Ebony	EXTANT-TO REMAIN	100	2	
	<i>Acacia whitebark</i> Flea Brando	24" Box	25	8		<i>Chilopsis buckleyana</i> 'forming cloud' Morning Cloud Cholla	24" Box	50	3	<b>ACCENTS</b>					
	<i>Celtis reticulata</i> Netleaf Hackberry	30" Box	50	5							<i>Agave parryi</i> Parry's Agave	5 gpl	25	41	
	<i>Quercus laevis</i> White Oak	30" Box	50	11							<i>Ficus glauca</i> 'Dipah Blue' Blue Ficus	1 gpl	5	73	
	<i>Quercus laevis</i> White Oak	EXTANT-TO REMAIN	50	2							<i>Hesperaloe parviflora</i> 'Cherry Valley' Cherry Valley Silphium	5 gpl	25	11	
<b>SHRUBS</b>															
	<i>Callitriche californica</i> Riparian Creeper	5 gpl	10	10							<i>Hesperaloe parviflora</i> 'Deepa TM' Cherry Valley Red Yucca	5 gpl	10	56	
	<i>Leucophyllum leucopodium</i> Chihuahuan Sage	5 gpl	25	9							<i>Pedicularis mononchus</i> 'Cherry Valley' Cherry Valley Lily-of-the-valley	5 gpl	25	17	
	<i>Muhlenbergia capitata</i> Pink Muhly Grass	5 gpl	10	51							<i>Lantana montevidensis</i> 'Spreading White' White Trailing Lantana	5 gpl	10	69	
	<i>Muhlenbergia trichostachya</i> 'Lark' Autumn Glow Muhly	5 gpl	10	23							<i>Lantana 'New Gold'</i> New Gold Lantana	5 gpl	10	47	
	<i>Rhus copallina</i> Copaiba	5 gpl	25	35							<b>GROUND COVERS</b>				
	<i>Rhus copallina</i> Copaiba	5 gpl	10	16							1" Concrete rock, Color: Match Chubbrose Granite Rock shall be spread at a minimum 2" depth				
	<i>Taxonia 'Orange Jubilee'</i> Orange Jubilee Yellow Bell	5 gpl	50	47							6" RIP RAP, color to be determined rock shall be spread at a minimum 6" depth				



# Elevations



OVERALL FACADE MATERIAL PERCENTAGES								
	TOTAL	A	B	C	D	E	F	G
EAST	765 sqft (100%)	95 sqft (12%)	225 sqft (29%)	15 sqft (2%)	152 sqft (20%)	60 sqft (8%)	192 sqft (25%)	26 sqft (4%)
NORTH	1638 sqft (100%)	123 sqft (8%)	672 sqft (41%)	83 sqft (5%)	183 sqft (11%)	115 sqft (7%)	414 sqft (25%)	48 sqft (3%)

OVERALL FACADE MATERIAL PERCENTAGES								
	TOTAL	A	B	C	D	E	F	G
WEST	733 sqft (100%)	94 sqft (13%)	294 sqft (41%)	37 sqft (6%)	184 sqft (26%)	49 sqft (7%)	20 sqft (3%)	26 sqft (4%)
SOUTH	1602 sqft (100%)	123 sqft (8%)	718 sqft (45%)	81 sqft (5%)	443 sqft (27%)	84 sqft (5%)	105 sqft (7%)	48 sqft (3%)





# Elevations



OVERALL FACADE MATERIAL PERCENTAGES								
	TOTAL	A	B	C	D	E	F	G
EAST	765 sqft (100%)	95 sqft (12%)	225 sqft (29%)	15 sqft (2%)	152 sqft (20%)	60 sqft (8%)	192 sqft (25%)	26 sqft (4%)
NORTH	1638 sqft (100%)	123 sqft (8%)	672 sqft (41%)	83 sqft (5%)	183 sqft (11%)	115 sqft (7%)	414 sqft (25%)	48 sqft (3%)



# Elevations



## OVERALL FACADE MATERIAL PERCENTAGES

	TOTAL	A	B	C	D	E	F	G
WEST	733 sqft (100%)	94 sqft (13%)	294 sqft (41%)	37 sqft (6%)	184 sqft (26%)	49 sqft (7%)	20 sqft (3%)	26 sqft (4%)
SOUTH	1602 sqft (100%)	123 sqft (8%)	718 sqft (45%)	81 sqft (5%)	443 sqft (27%)	84 sqft (5%)	105 sqft (7%)	48 sqft (3%)



# Renderings





# Renderings





# Color and Material Board



**A**  
 DRYVIT FREESTYLE TEXTURE  
 SW7033 BRAINSTORM BRONZE



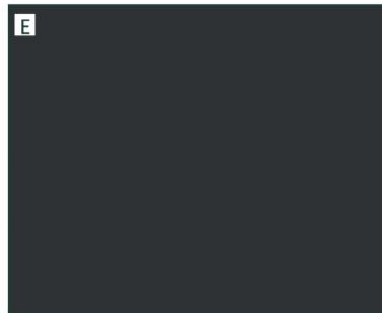
**B**  
 INTERSTATE MODULAR BRICK  
 COLOR: SMOKEY MOUNTAIN  
 TEXTURE: RUFF  
 SIZE: 4 x 2 1/4 x 8  
 APPLICATION: HORIZONTAL, RUNNING



**C**  
 INTERSTATE EMPEROR BRICK  
 COLOR: SMOKEY MOUNTAIN  
 TEXTURE: RUFF  
 SIZE: 4 x 4 x 16  
 APPLICATION: HORIZONTAL, RUNNING



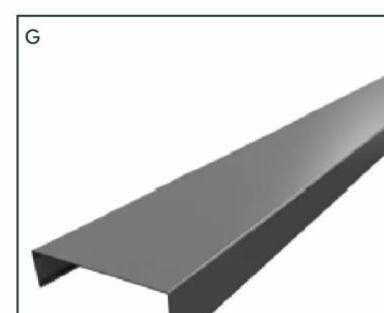
**D**  
 NEW TECH WOOD CLADDING  
 MODEL: UH58 - BELGIAN BOARD  
 COLOR: PERUVIAN TEAK  
 APPLICATION: COMPOSITE (SIDING) +  
 FLAT SLAT BOARDS (UNDERSIDE OF CAN-



**E**  
 AWNEX  
 EXTRUDED ALUMINUM MATTE CANOPY  
 COLOR TO MATCH RAL #7021 MATTE



**F**  
 ALUMINUM STOREFRONT  
 COLOR TO MATCH RAL #7021  
 MTO028 - FLAT BLACK



**G**  
 POWDER COATING METAL COPING  
 COLOR TO MATCH SW7033 BRAIN-  
 STORM BRONZE (LOCALLY SOURCED)



# Findings

Staff is seeking your review and recommendation on the following:

- ✓ Proposed building elevations and landscape design

***Staff welcomes any feedback***



# Design Review Board