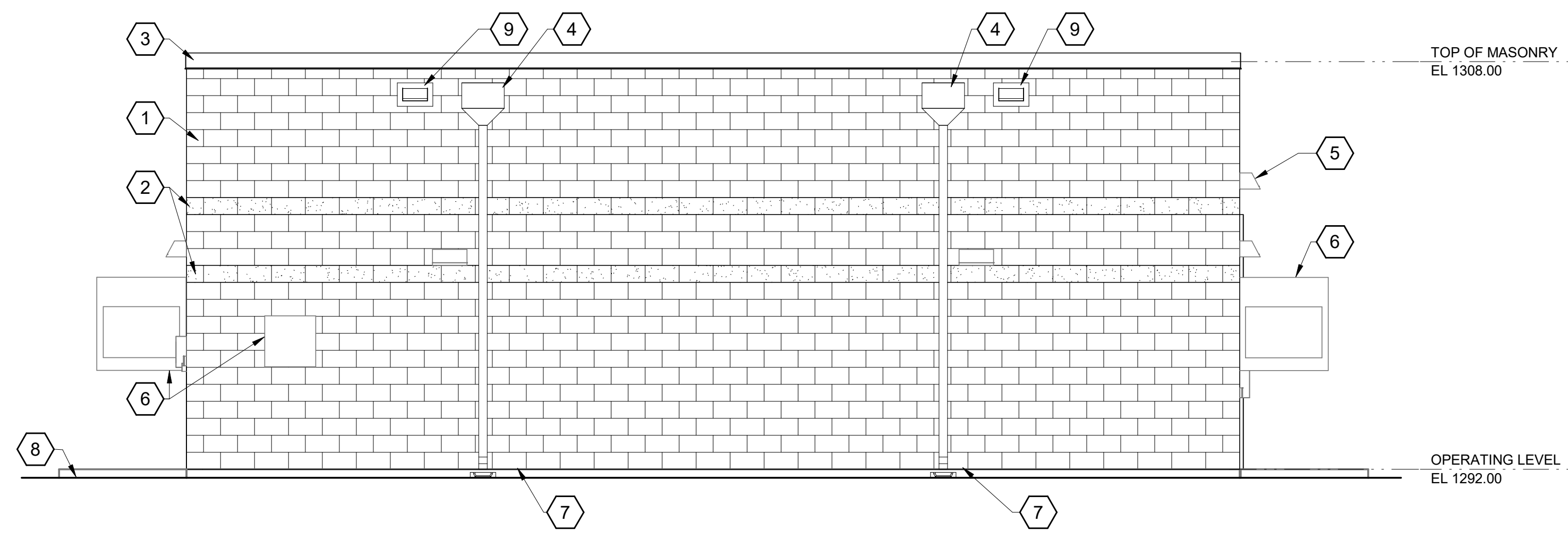
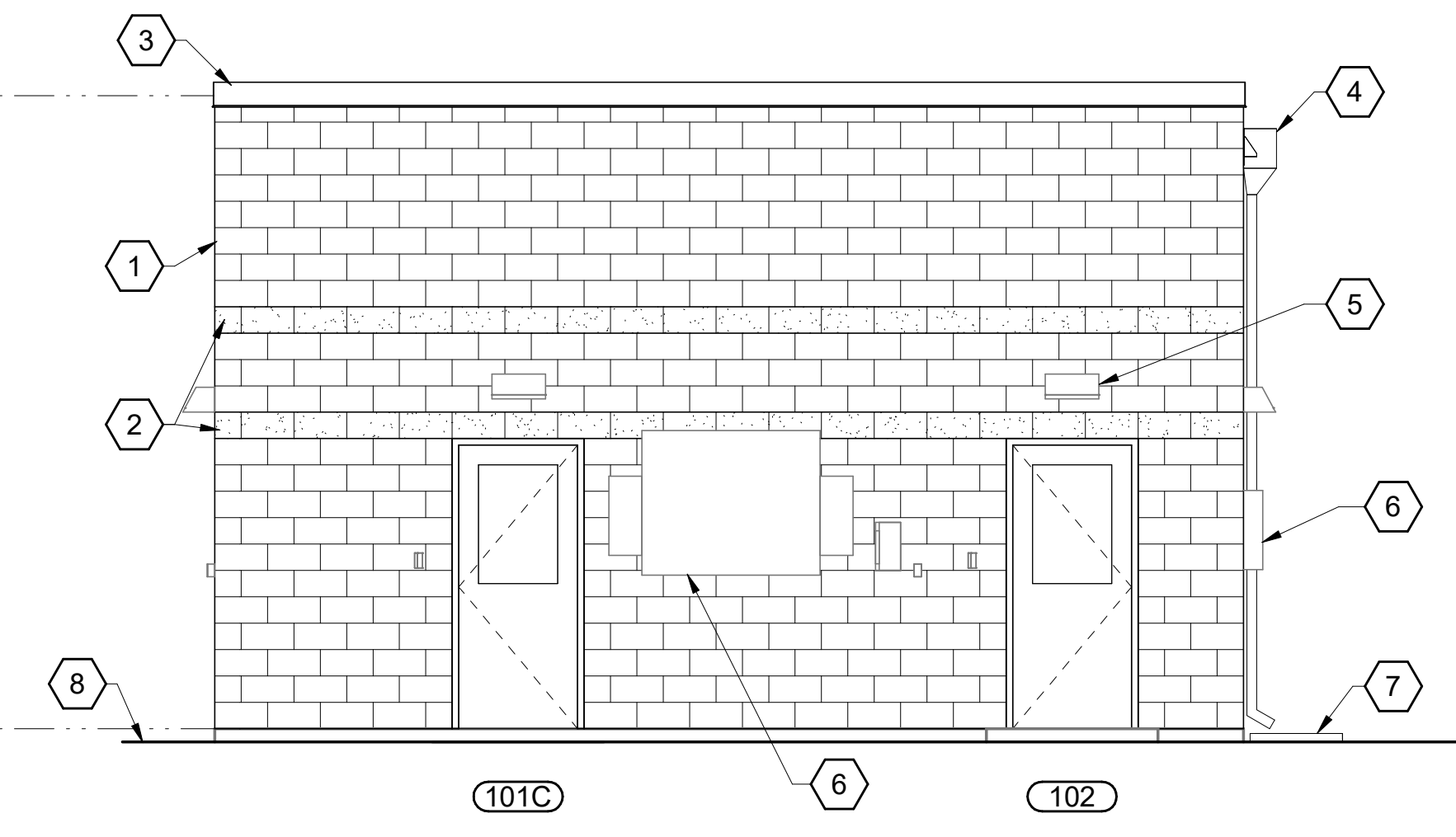


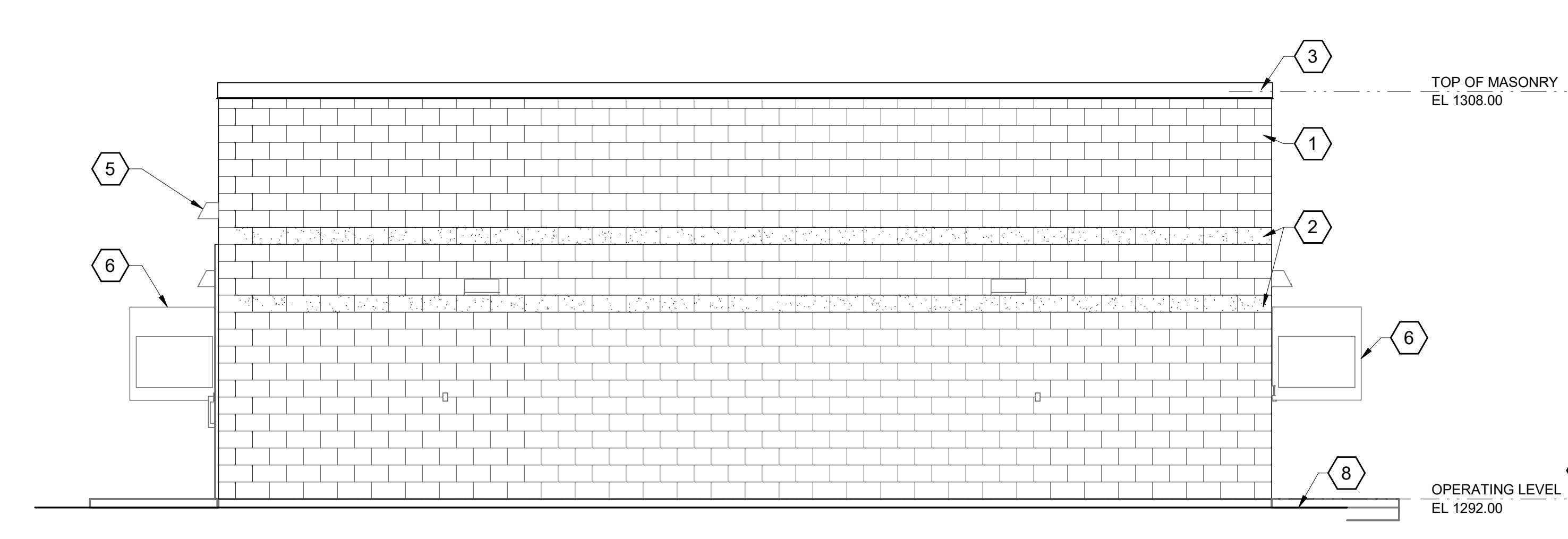
FILE: BIM\_360/411.073 - Central Mesa Reuse Pipeline/411073-00-IPS-E-HOUSE.rvt  
PLOTTED: 2/12/2024 9:38:46 AM



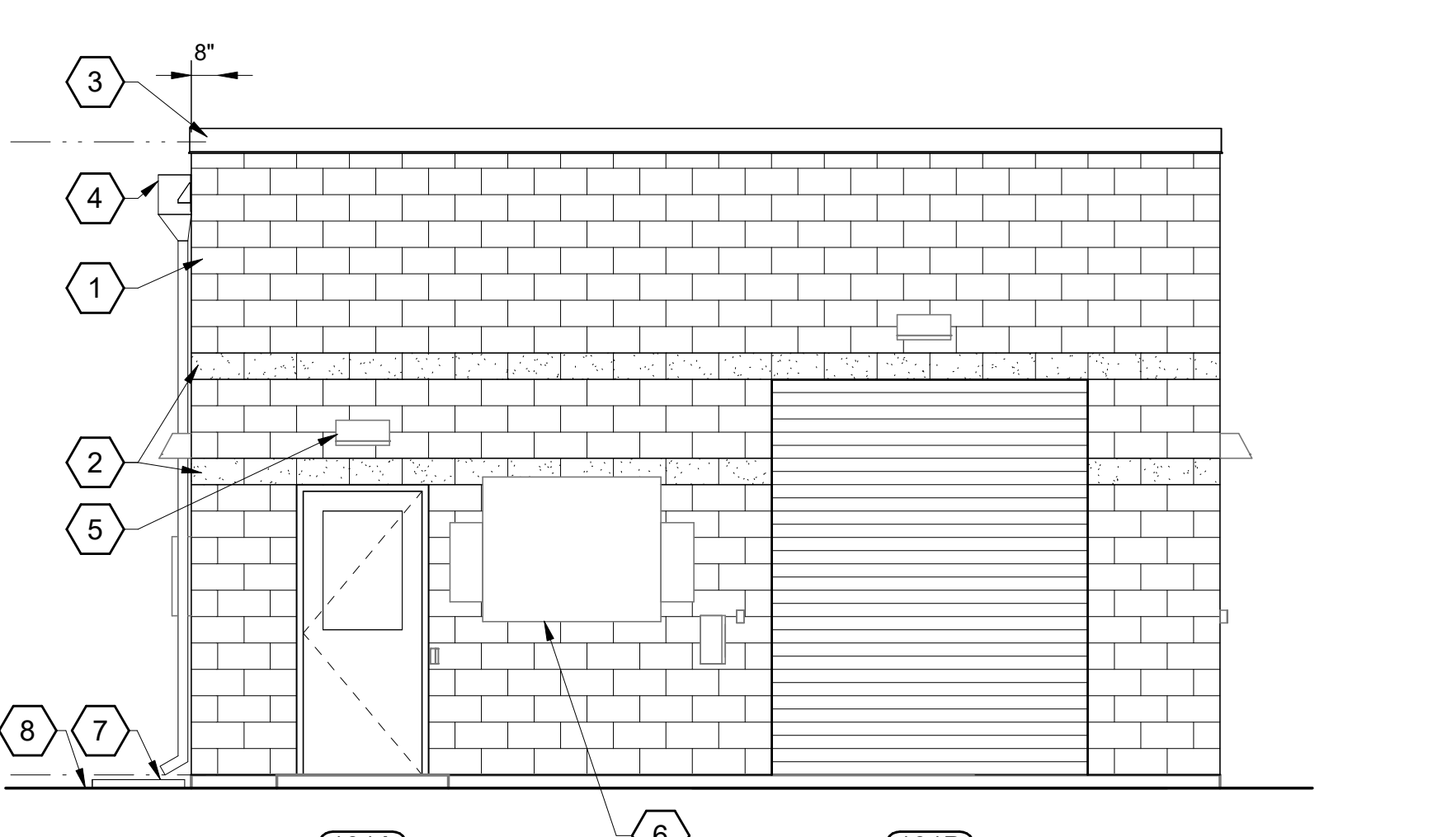
**NORTH ELEVATION**  
1/4" = 1'-0"



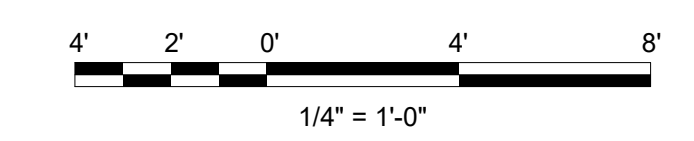
**EAST ELEVATION**  
1/4" = 1'-0"



**SOUTH ELEVATION**  
1/4" = 1'-0"



**WEST ELEVATION**  
1/4" = 1'-0"



**GENERAL SHEET NOTES**

- FOR ARCHITECTURAL SYMBOL LEGEND, SEE SHEET A-00-106. FOR ARCHITECTURAL ABBREVIATIONS, SEE SHEET A-00-601.

**SHEET KEYNOTES**

- 8" SMOOTH FACE CONCRETE BLOCK.
- 8" SPLIT FACE CONCRETE BLOCK.
- PREFINISHED METAL COPING.
- PREFINISHED METAL SCUPPER AND DOWNSPOUT.
- LIGHT FIXTURE, SEE ELECTRICAL DRAWINGS, TYPICAL.
- HVAC EQUIPMENT, SEE HVAC DRAWINGS. COORDINATE OPENING SIZE WITH EQUIPMENT PROVIDED.
- CONCRETE SPLASHBLOCK, TYPICAL.
- FINISH GRADE, SEE CIVIL DRAWINGS.
- SECONDARY OVERFLOW SCUPPER WITH EXTENDED DRIP.

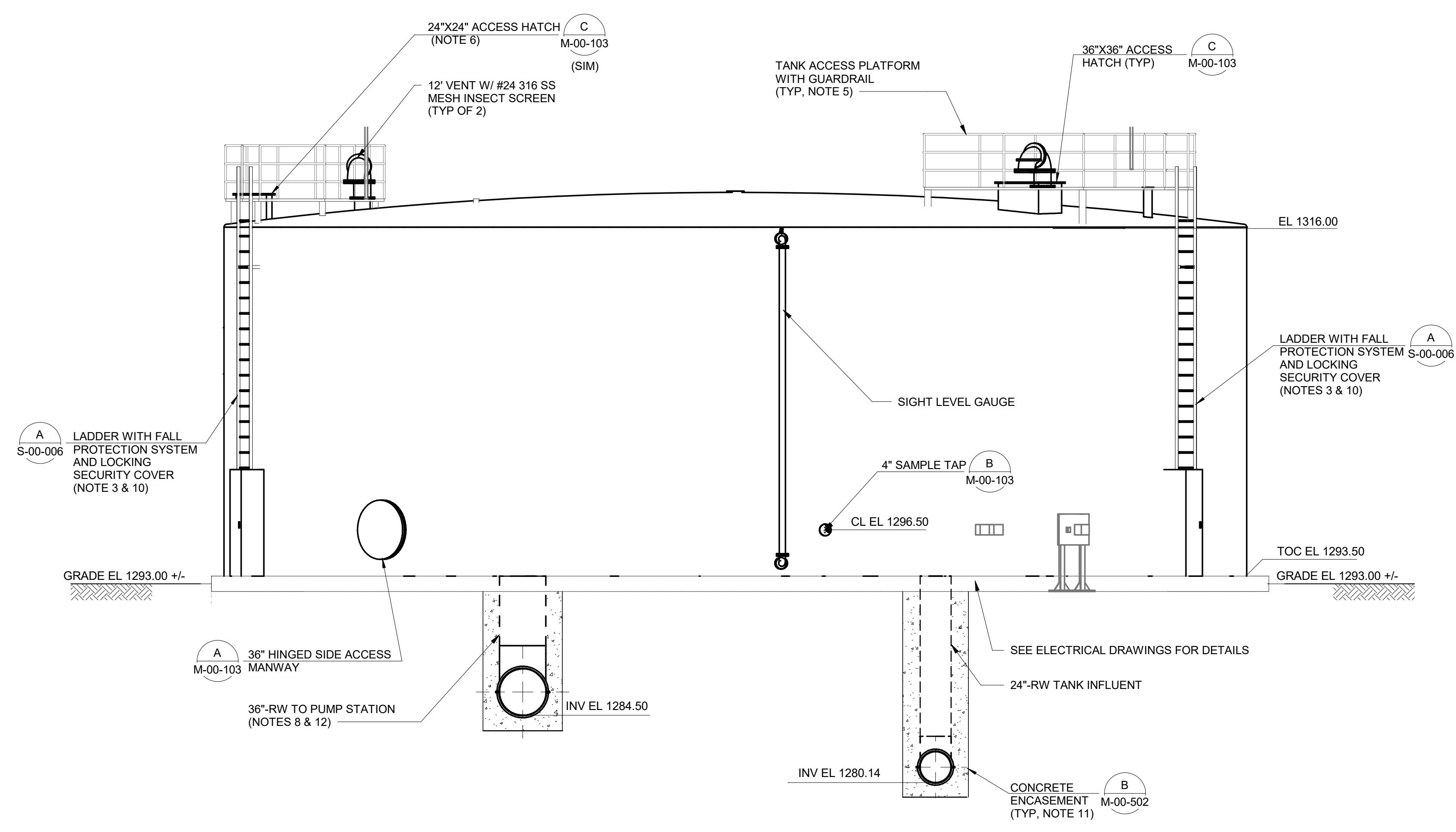
NOT FOR CONSTRUCTION

**BLACK & VEATCH**  
Black & Veatch Corporation  
Phoenix, Arizona

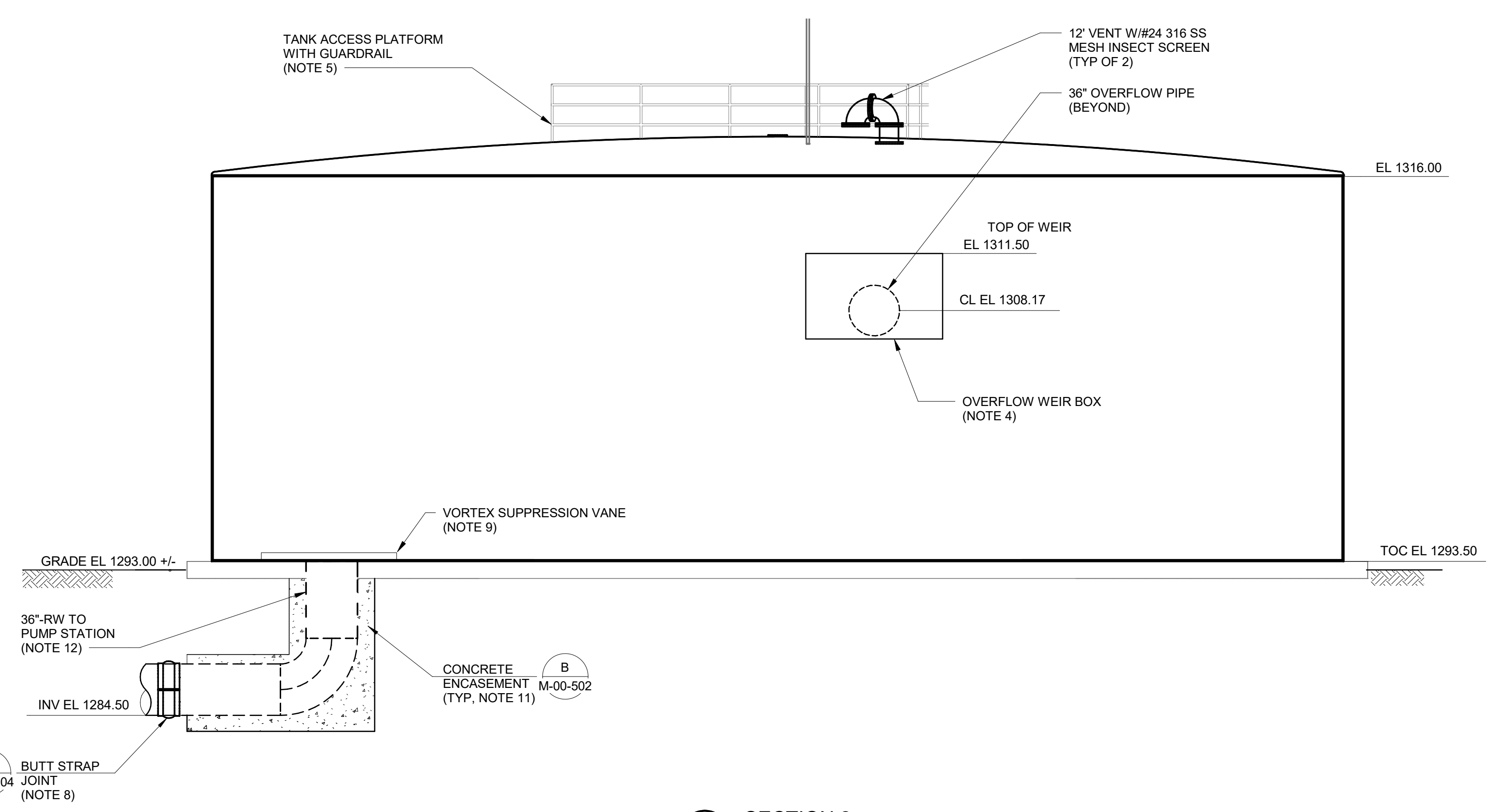


FINAL	CITY OF MESA ENGINEERING DEPARTMENT	
	CENTRAL MESA REUSE PIPELINE - PLANTS INTERMEDIATE PUMP STATION	
NOT FOR CONSTRUCTION OR RECORDING	ARCHITECTURAL	DRAWING
	<b>E-HOUSE</b>	<b>A-00-201</b>
DRAWN BY: RML ENGINEER: GMP APPROVED BY: RAB	BUILDING ELEVATIONS	CATALOG NUMBER:
ACTIVITY: PROJECT NO.: CP0896	SHEET OF	

FILE: BIM\_360/4411073-Central Mesa Reuse Pipeline/41073-00-UPS-RESEFV/OIR.rvt  
 PLOTTED: 2/9/2024 10:15:47 AM



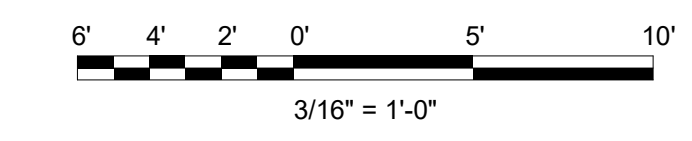
SECTION 1  
 M-00-101 3/16" = 1'-0"



SECTION 2  
 M-00-101 3/16" = 1'-0"

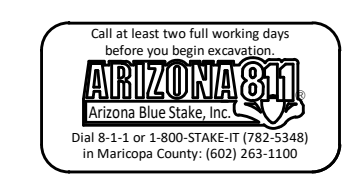
NOTES:

- REFER TO PIPING AND INSTRUMENTATION DIAGRAMS (P&IDs) FOR ADDITIONAL GUIDANCE. IN THE CASE OF DISCREPANCY BETWEEN THE MECHANICAL DRAWINGS AND THE P&IDs, THE CONTRACTOR SHALL IMMEDIATELY NOTIFY THE ENGINEER FOR ADDITIONAL DIRECTION.
- TANK ROOF PENETRATIONS FOR CATHODIC PROTECTION ANODES BY CATHODIC PROTECTION SYSTEM SUPPLIER NOT SHOWN. CATHODIC PROTECTION DESIGN SHALL BE COORDINATED WITH THE STEEL TANK MANUFACTURER. SEE CATHODIC PROTECTION DRAWINGS FOR DETAILS.
- FALL PROTECTION SAFETY SYSTEM SHALL BE OSHA APPROVED AND SHALL CONSIST OF A CARRIER, SAFETY SLEEVE, LANYARD, AND CONNECTORS, AND BE SUITABLE FOR OPERATION. HARNESS SHALL BE PROVIDED BY OWNER. FALL PROTECTION SAFETY SYSTEM SHALL BE MILLER SAF-T-CLIMB WITH REMOVABLE HATCH DISMOUNT, 3M LAD-SAF SYSTEM, OR EQUAL. LOCKING SECURITY COVER SHALL HAVE AN AFFIXED SIGN STATING: "CAUTION FALL PROTECTION REQUIRED".
- OVERFLOW WEIR BOX SHALL BE DESIGNED BY THE TANK MANUFACTURER. WEIR SHALL HAVE A MINIMUM LENGTH OF 9-FT. REFER TO SECTION 331613.13 FOR ADDITIONAL INFORMATION.
- ACCESS PLATFORM, GUARDRAIL WITH KICKPLATE, SAFETY HARNESS TIE OFF POINTS, AND LADDER FALL PROTECTION SAFETY RAIL SHALL BE PROVIDED BY THE TANK MANUFACTURER AND DESIGNED BY A PROFESSIONAL ENGINEER LICENSED IN ARIZONA. SEALED DRAWINGS SHALL BE PROVIDED TO THE ENGINEER FOR REVIEW. SAFETY HARNESS TIE OFF POINTS SHALL BE PROVIDED NEAR ALL ROOF HATCHES AND OPENING. IN GRATING FOR AIR VENTS AND LEVEL SENSOR SHALL BE BANDED, PROVIDING A MAXIMUM CLEARANCE OF 1" AROUND PIPE. REFER TO SPECIFICATION SECTION 331613.13 FOR ADDITIONAL INFORMATION.
- TANK 24-INCH ACCESS HATCH SHALL BE LOCATED ABOVE THE INTERNAL TANK OVERFLOW BOX.
- STEEL TANK MANUFACTURER SHALL DESIGN THE TANK ROOF SUPPORT SYSTEM TO AVOID CONFLICT WITH THE PROPOSED ROOF PENETRATIONS AND OPENINGS.
- 36" OUTLET PIPING AT TANK SHALL BE STEEL AND TRANSITION TO CCP AT THE BUTT STRAP.
- VORTEX SUPPRESSION VANE SHALL BE DESIGNED BY THE TANK MANUFACTURER. REFER TO SPECIFICATION SECTION 331613.13 FOR ADDITIONAL INFORMATION.
- STEEL LADDER WITH LOCKING SECURITY COVER SHALL PROVIDED BY THE STEEL TANK MANUFACTURER. LADDER CONNECTIONS TO TANK SHALL BE DESIGNED BY MANUFACTURER. SEE SECTION 331613.13 FOR ADDITIONAL INFORMATION.
- CONCRETE ENCASEMENT SHALL AT MINIMUM EXTEND TO THE EDGE OF SLAB. A PIPE JOINT SHALL BE PROVIDED AT THE END OF EACH CONCRETE ENCASEMENT PER SECTION 400524.
- BOTTOM OF TANK SHOULD BE SLOPED SUCH THAT THE OUTLET PIPE TO THE PUMP STATION IS THE LOW POINT.

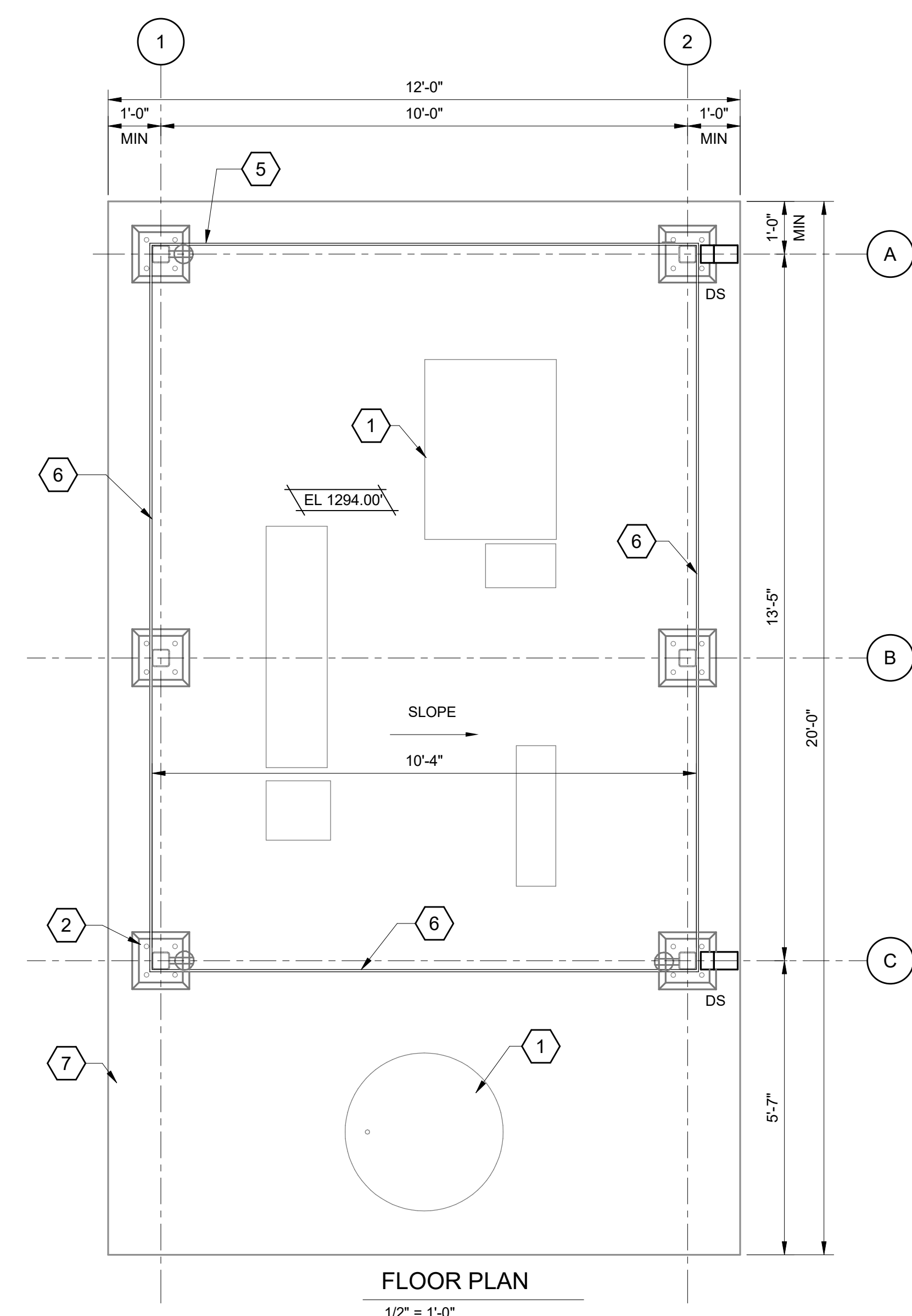


NOT FOR CONSTRUCTION

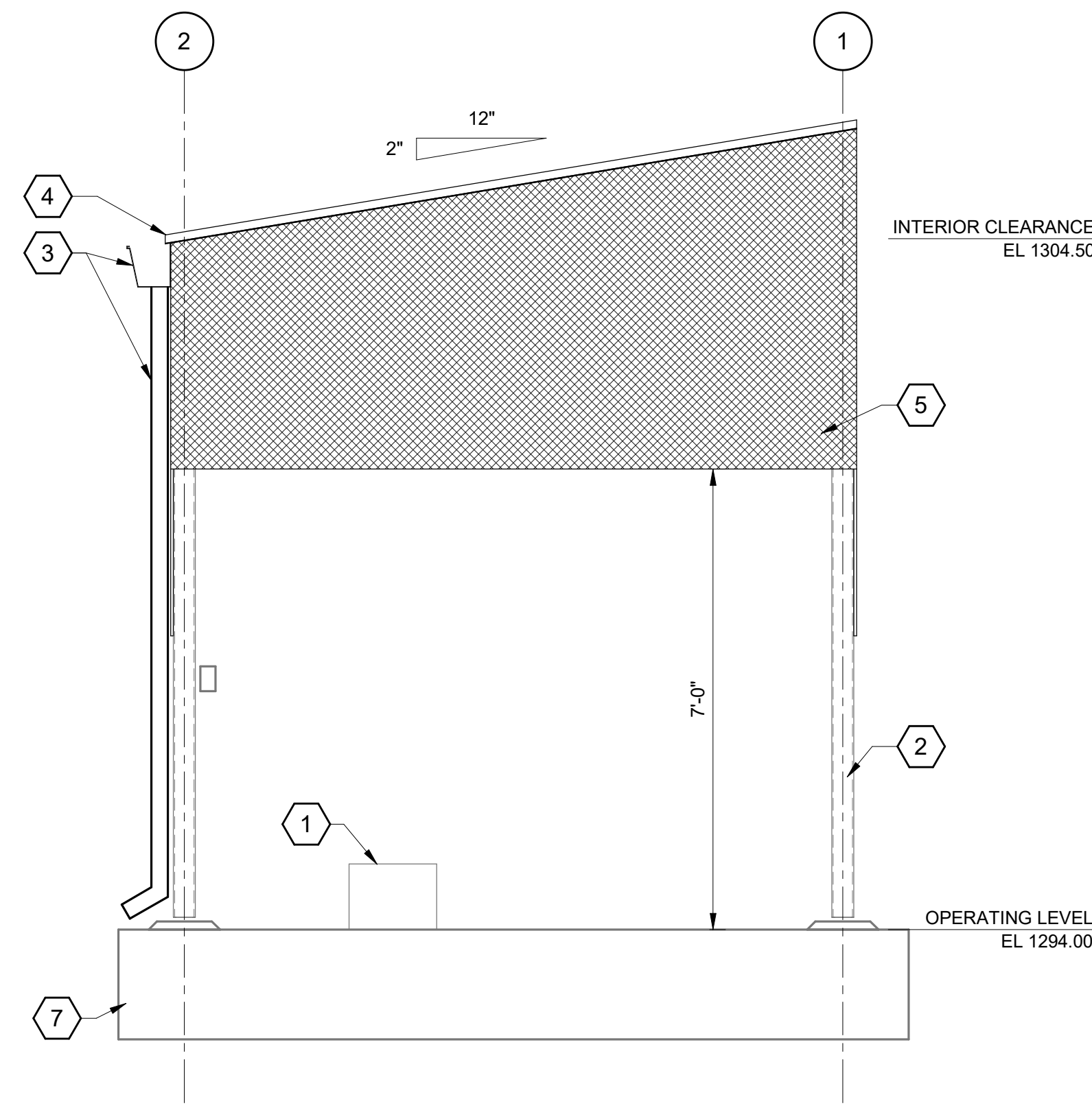
**BLACK & VEATCH**  
 Black & Veatch Corporation  
 Phoenix, Arizona



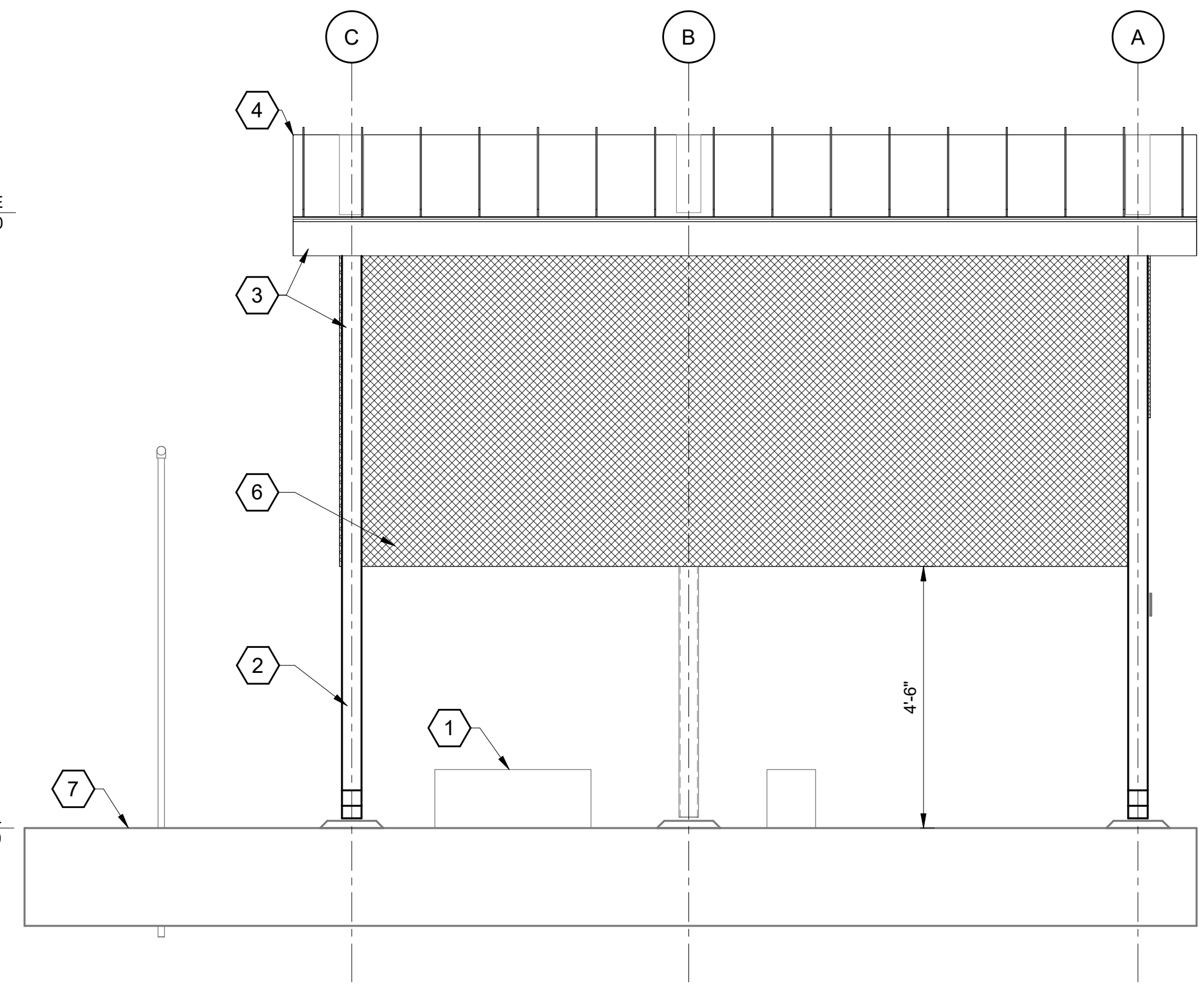
FINAL	CITY OF MESA ENGINEERING DEPARTMENT	
	CENTRAL MESA REUSE PIPELINE - PLANTS INTERMEDIATE PUMP STATION	
NOT FOR CONSTRUCTION OR RECORDING	PROCESS MECHANICAL	DRAWING
	RECLAIMED WATER TANK SECTIONS	M-00-102
DRAWN BY: BR/AM ENGINEER: CA APPROVED BY: PJO	SHEET	CATALOG NUMBER:
ACTIVITY: PROJECT NO.: CP0896	OF	



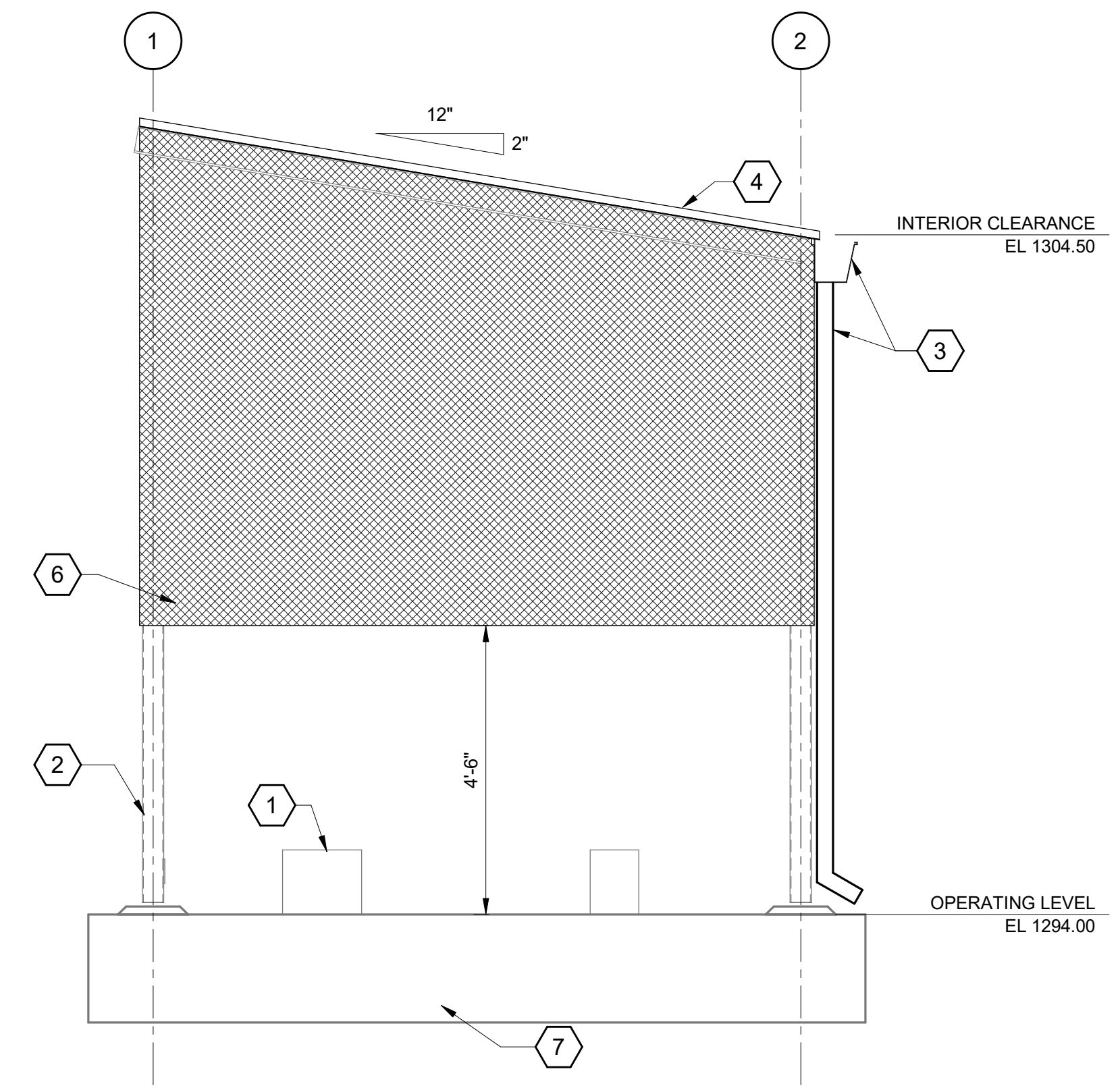
FLOOR PLAN  
1/2" = 1'-0"



NORTH ELEVATION  
1/2" = 1'-0"



EAST ELEVATION  
1/2" = 1'-0"

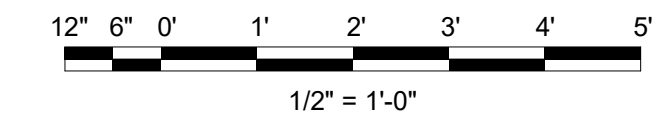


SOUTH ELEVATION  
1/2" = 1'-0"

GENERAL SHEET NOTES

SHEET KEYNOTES

1. MECHANICAL EQUIPMENT, SEE MECHANICAL DRAWINGS, TYPICAL.
2. STRUCTURAL FRAMING, SEE STRUCTURAL DRAWINGS, TYPICAL.
3. PREFINISHED METAL GUTTER AND DOWNSPOUTS.
4. PREFINISHED METAL ROOF PANEL SYSTEM (STANDING SEAM).
5. REMOVABLE FABRIC PANEL, ATTACHED TO STRUCTURAL FRAMING PER MANUFACTURER, SEE SPECIFICATION 13 34 20. 7'-0" CLEAR SHALL BE MAINTAINED FROM TOP OF SLAB TO BOTTOM OF FABRIC PANEL.
6. REMOVABLE FABRIC PANELS, ATTACHED TO STRUCTURAL FRAMING PER MANUFACTURER, SEE SPECIFICATION 13 34 20. 4'-6" CLEAR SHALL BE MAINTAINED FROM TOP OF SLAB TO BOTTOM OF FABRIC PANEL.
7. CONCRETE SLAB, SEE STRUCTURAL DRAWINGS.



NOT FOR CONSTRUCTION



FINAL	CITY OF MESA ENGINEERING DEPARTMENT	
	CENTRAL MESA REUSE PIPELINE - PLANTS INTERMEDIATE PUMP STATION	
NOT FOR CONSTRUCTION OR RECORDING	ARCHITECTURAL	DRAWING
	IPS CANOPY PLAN & ELEVATIONS	A-00-105
DRAWN BY: RML ENGINEER: GMP APPROVED BY: RAB	SHEET	CATALOG NUMBER:
ACTIVITY: PROJECT NO.: CP0896	OF	

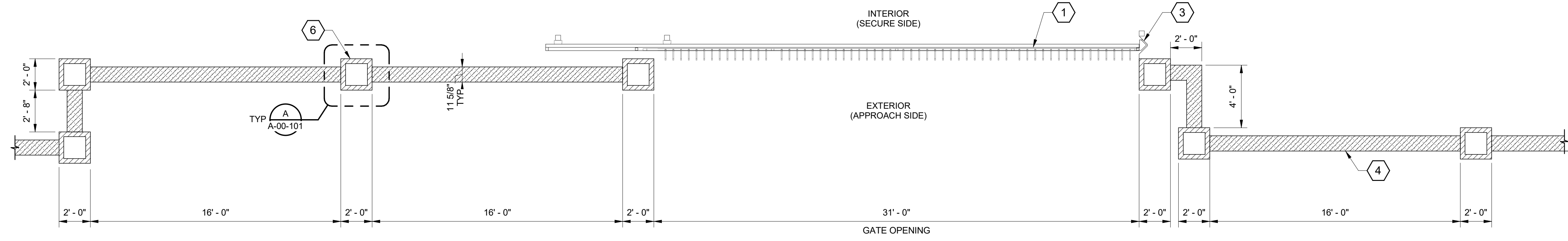
FILE: BIM 360/411073-Central Mesa Reuse Pipeline/411073-00-IPS-SURGE TANK.rvt PLOTTED: 2/6/2024 8:23:20 AM

GENERAL SHEET NOTES

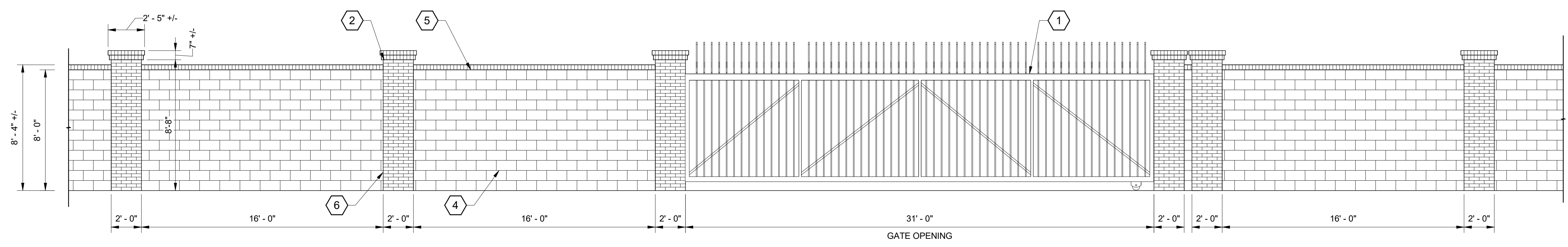
- SEE CIVIL DRAWINGS FOR SITE WALL AND GATE LOCATIONS.

SHEET KEYNOTES

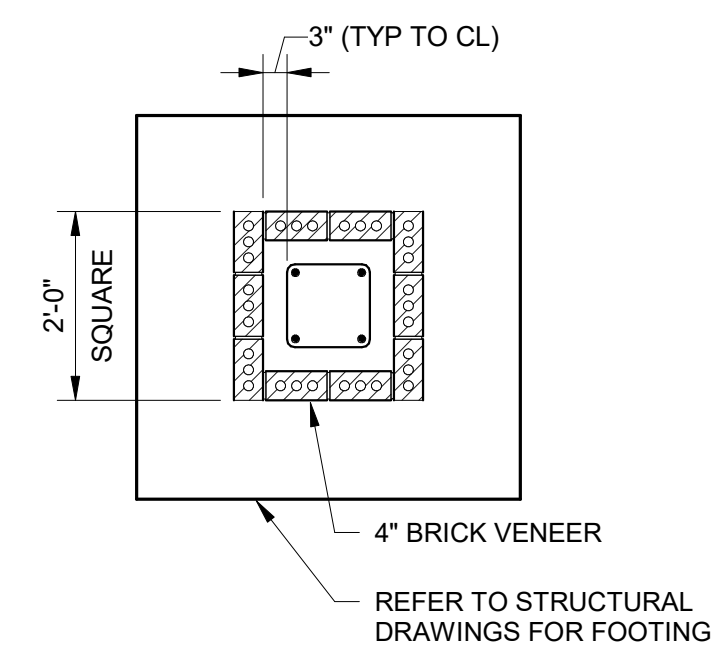
- MOTORIZED ACCESS ROLLER GATE, SEE ELECTRICAL DRAWINGS FOR GATE CONTROLLER.
- DOUBLE BRICK COLUMN CAP IN ROWLOCK COURSING, TYPICAL.
- GATE MOUNTING POST, TYPICAL.
- 12" SMOOTH FACE CONCRETE BLOCK, TYPICAL.
- SINGLE BRICK CAP IN ROWLOCK COURSING, TYPICAL.
- BRICK VENEER COLUMN, TYPICAL.
- SOLID CONCRETE BLOCK CAP, TYPICAL.
- CONCRETE BLOCK COLUMN CAP, TYPICAL.



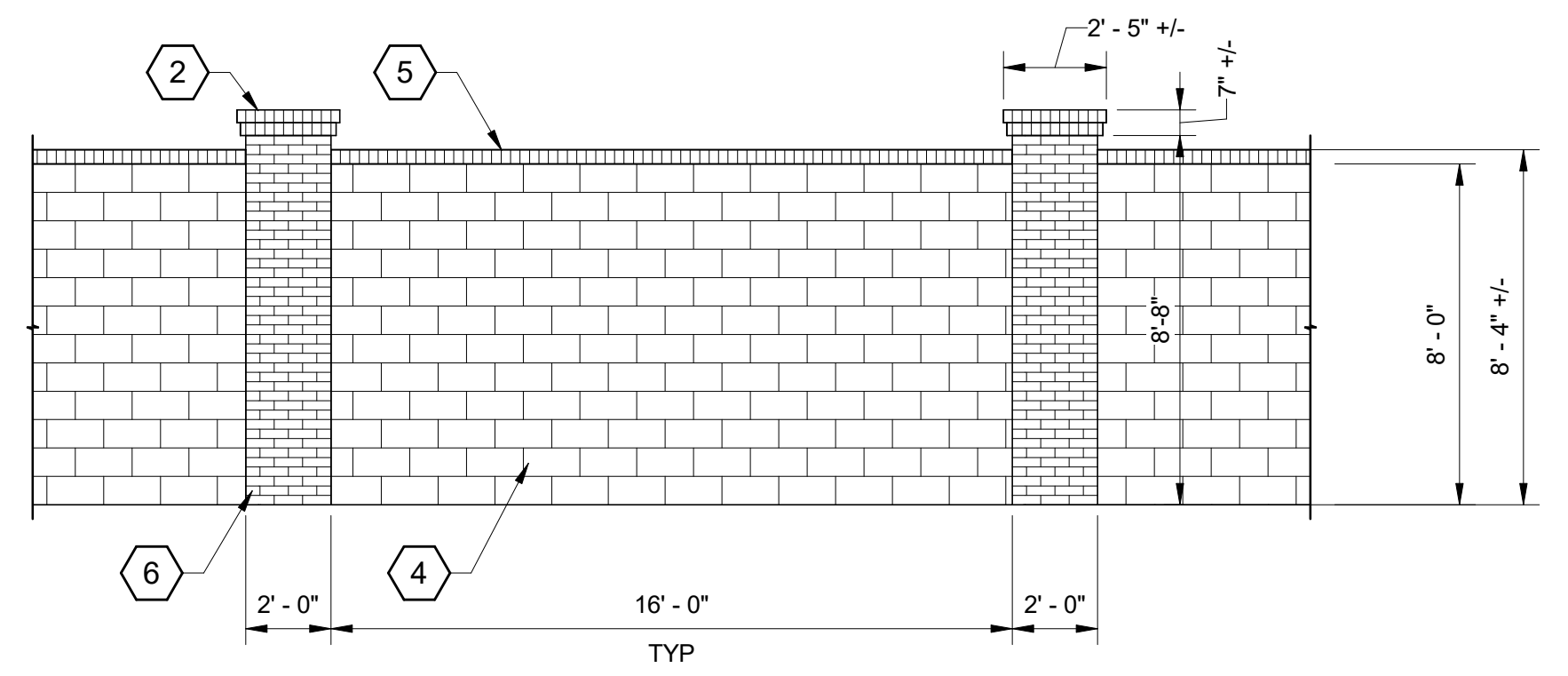
WESTERN GATE PLAN  
1/4" = 1'-0"



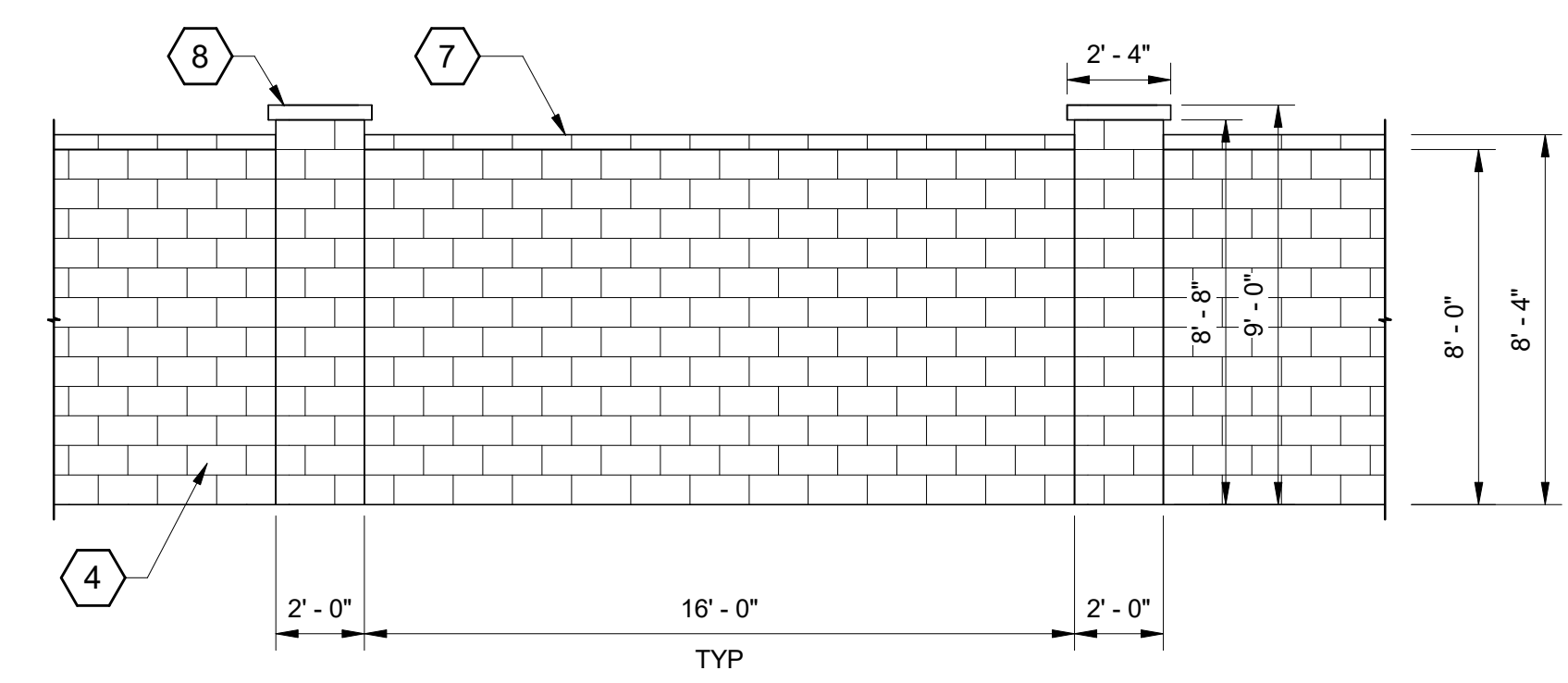
WESTERN GATE ELEVATION  
1/4" = 1'-0"



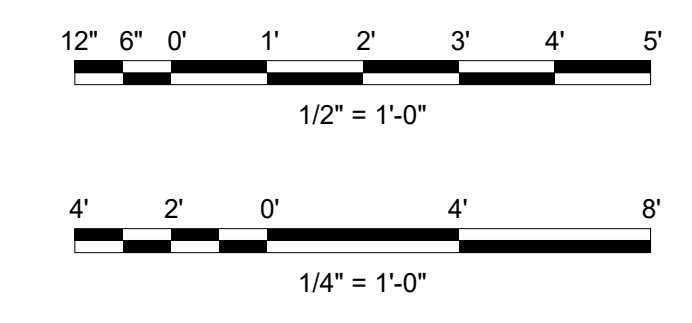
DETAIL  
A-00-101 1/2" = 1'-0"



PRIMARY SITE WALL ELEVATION  
1/4" = 1'-0"



SECONDARY SITE WALL ELEVATION  
1/4" = 1'-0"

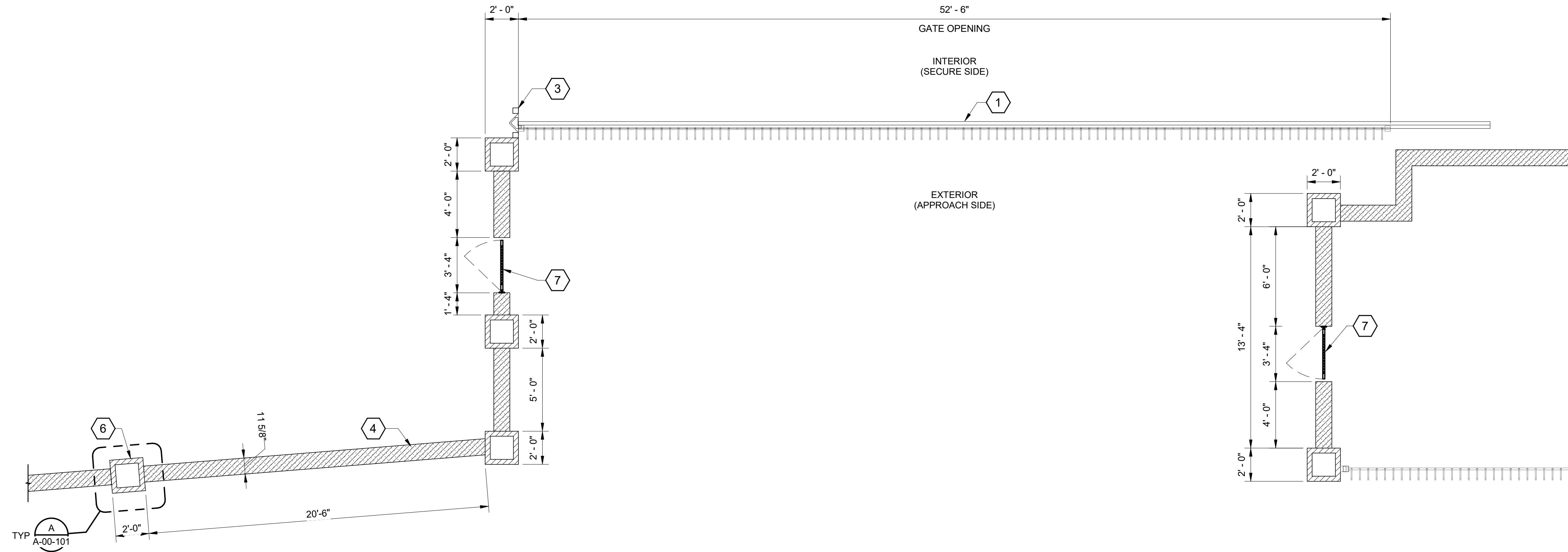


NOT FOR CONSTRUCTION

**BLACK & VEATCH**  
Black & Veatch Corporation  
Phoenix, Arizona

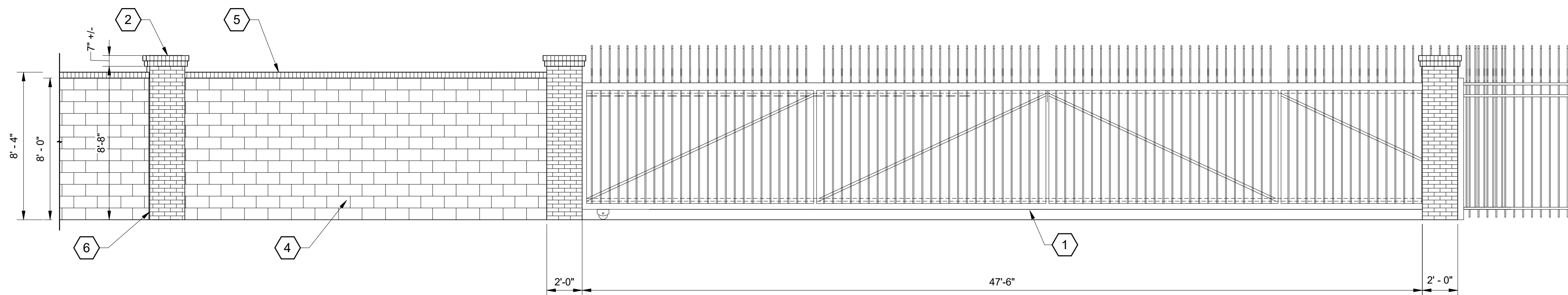


FINAL	CITY OF MESA ENGINEERING DEPARTMENT	
	CENTRAL MESA REUSE PIPELINE - PLANTS INTERMEDIATE PUMP STATION	
NOT FOR CONSTRUCTION OR RECORDING	ARCHITECTURAL	DRAWING
	WESTERN GATE PLAN & ELEVATIONS	A-00-101
DRAWN BY: RML ENGINEER: GMP APPROVED BY: RAB	SHEET	CATALOG NUMBER:
ACTIVITY: PROJECT NO.: CP0896	OF	



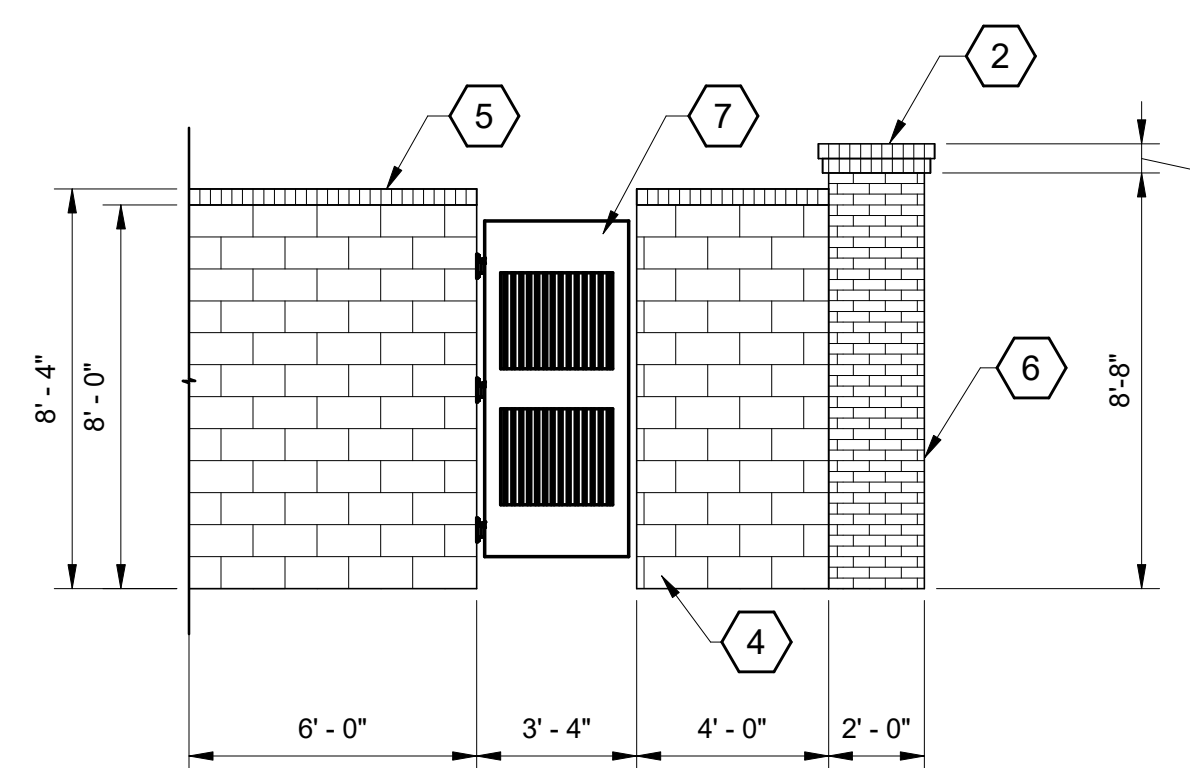
EASTERN GATE PLAN

1/4" = 1'-0"



EASTERN GATE ELEVATION

1/4" = 1'-0"



EGRESS GATE ELEVATION

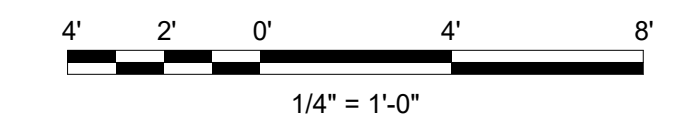
1/4" = 1'-0"

GENERAL SHEET NOTES

1. SEE CIVIL DRAWINGS FOR SITE WALL AND GATE LOCATIONS.

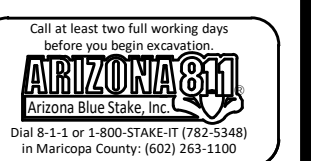
SHEET KEYNOTES

1. MOTORIZED ACCESS ROLLER GATE, SEE ELECTRICAL DRAWINGS FOR GATE CONTROLLER.
2. DOUBLE BRICK COLUMN CAP IN ROWLOCK COURSING, TYPICAL.
3. GATE MOUNTING POST, TYPICAL.
4. 12" SMOOTH FACE CONCRETE BLOCK, TYPICAL.
5. SINGLE BRICK CAP IN ROWLOCK COURSING, TYPICAL.
6. BRICK VENEER COLUMN, TYPICAL.
7. EGRESS MAN GATE.



NOT FOR CONSTRUCTION

**BLACK & VEATCH**  
Black & Veatch Corporation  
Phoenix, Arizona



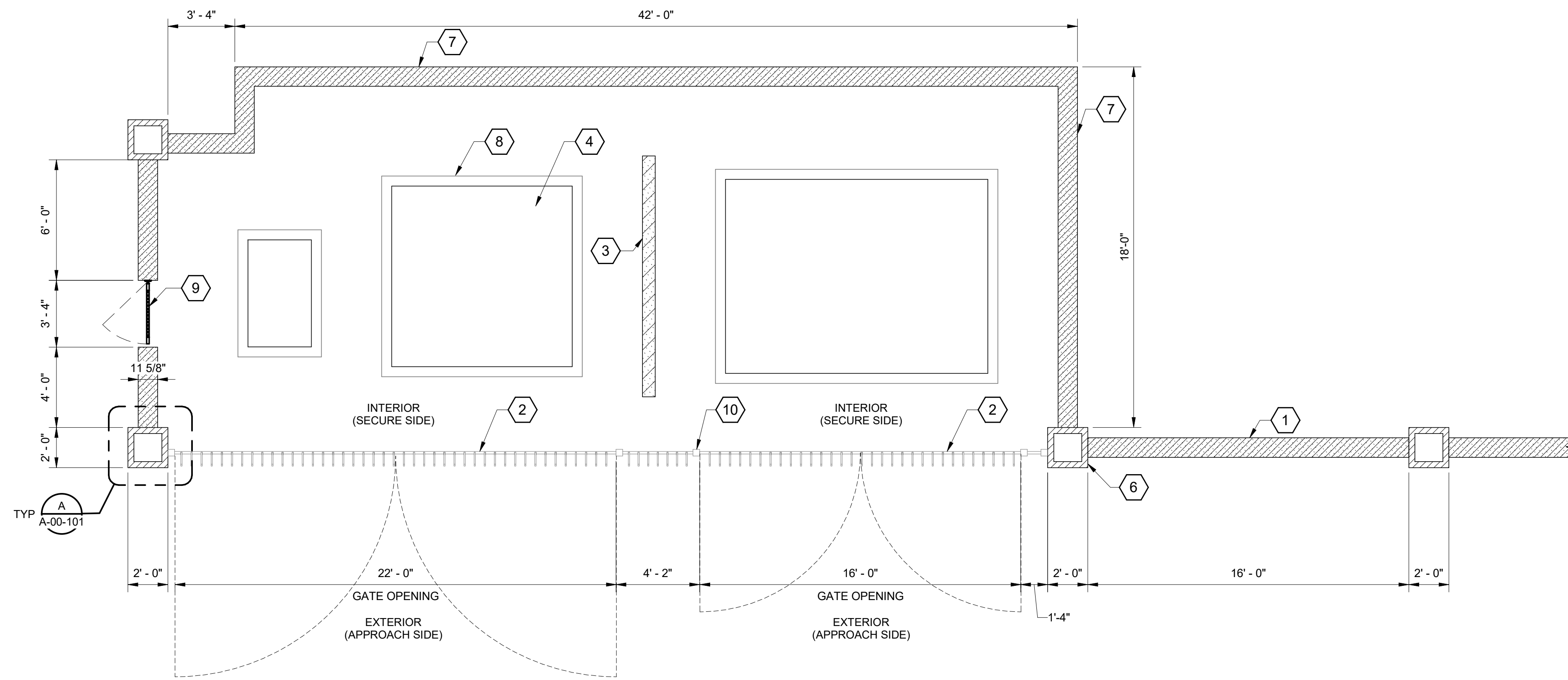
FINAL	CITY OF MESA ENGINEERING DEPARTMENT	
	CENTRAL MESA REUSE PIPELINE - PLANTS INTERMEDIATE PUMP STATION	
NOT FOR CONSTRUCTION OR RECORDING	ARCHITECTURAL	DRAWING
	<b>EASTERN GATE PLAN &amp; ELEVATIONS</b>	<b>A-00-102</b>
DRAWN BY: RML ENGINEER: GMP APPROVED BY: RAB	SHEET OF	CATALOG NUMBER:
ACTIVITY: PROJECT NO.: CP0896		

GENERAL SHEET NOTES

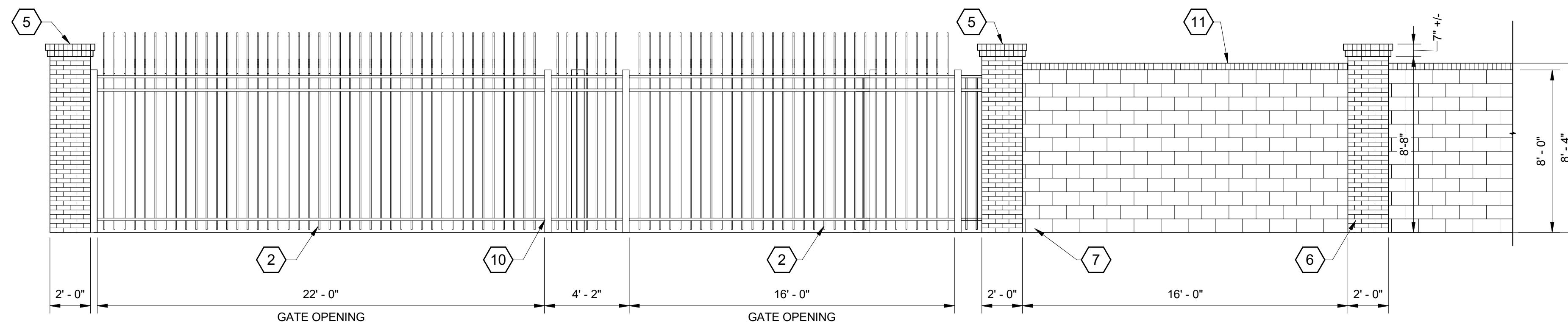
- SEE CIVIL DRAWINGS FOR SITE WALL AND GATE LOCATIONS.

SHEET KEYNOTES

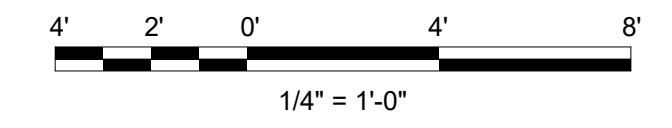
- PRIMARY SITE WALL, SEE CIVIL DRAWINGS.
- MANUAL SWING DOUBLE ACCESS GATE.
- CONCRETE BLOCK FIRE WALL, SEE STRUCTURAL DRAWINGS.
- ELECTRICAL EQUIPMENT, SEE ELECTRICAL DRAWINGS, TYPICAL.
- DOUBLE BRICK COLUMN CAP IN ROWLOCK COURSING, TYPICAL.
- BRICK VENEER COLUMN, TYPICAL.
- 12" SMOOTH FACE CONCRETE BLOCK, TYPICAL.
- CONCRETE EQUIPMENT PAD, SEE STRUCTURAL DRAWINGS, TYPICAL.
- EGRESS MAN GATE.
- ALUMINUM FENCE POST, TYPICAL.
- SINGLE BRICK CAP IN ROWLOCK COURSING, TYPICAL.



SRP GATE PLAN  
1/4" = 1'-0"



SRP GATE ELEVATION  
1/4" = 1'-0"



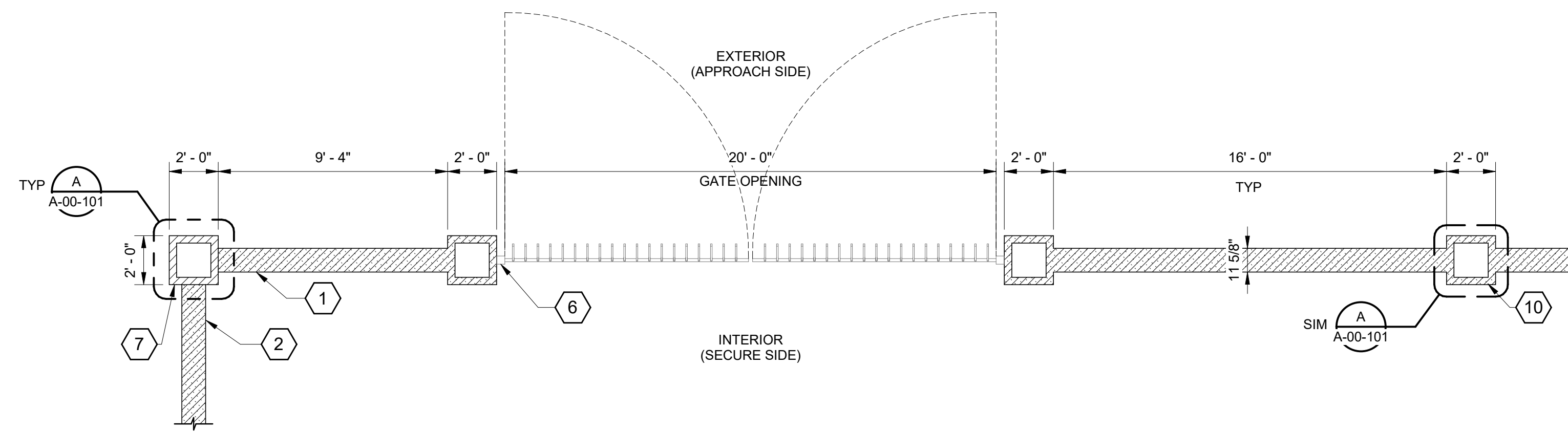
NOT FOR CONSTRUCTION



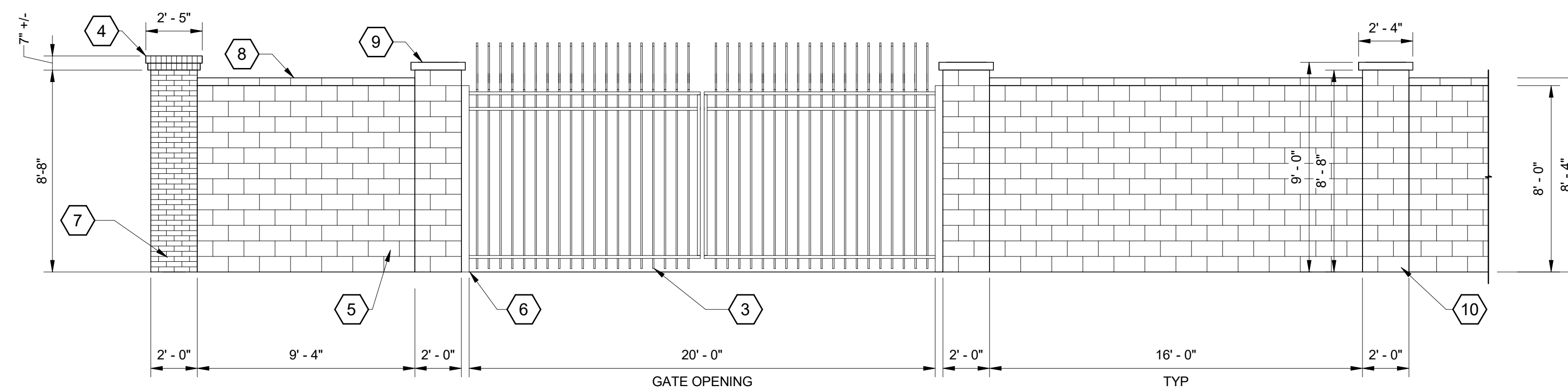
Black & Veatch Corporation  
Phoenix, Arizona



FINAL	CITY OF MESA ENGINEERING DEPARTMENT	
	CENTRAL MESA REUSE PIPELINE - PLANTS INTERMEDIATE PUMP STATION	
NOT FOR CONSTRUCTION OR RECORDING	ARCHITECTURAL	DRAWING
	SRP GATE PLAN & ELEVATION	A-00-103
DRAWN BY: RML ENGINEER: GMP APPROVED BY: RAB	SHEET	CATALOG NUMBER:
ACTIVITY: PROJECT NO.: CP0896	OF	



NORTHERN GATE PLAN  
1/4" = 1'-0"



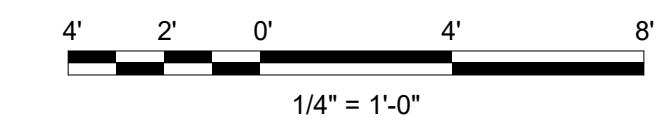
NORTHERN GATE - ELEVATION  
1/4" = 1'-0"

GENERAL SHEET NOTES

- SEE CIVIL DRAWINGS FOR SITE WALL AND GATE LOCATIONS.

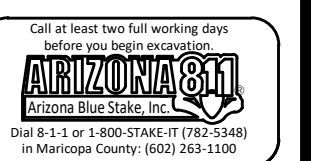
SHEET KEYNOTES

- SECONDARY SITE WALL, SEE CIVIL DRAWINGS.
- PRIMARY SITE WALL, SEE CIVIL DRAWINGS.
- MANUAL SWING DOUBLE ACCESS GATE.
- DOUBLE BRICK COLUMN CAP IN ROWLOCK COURSING, TYPICAL.
- 12" SMOOTH FACE CONCRETE BLOCK, TYPICAL.
- ALUMINUM FENCE POST, TYPICAL.
- BRICK VENEER COLUMN, TYPICAL.
- SOLID CONCRETE BLOCK CAP, TYPICAL.
- CONCRETE BLOCK COLUMN CAP COLUMN, TYPICAL.
- SMOOTH FACE BLOCK VENEER COLUMN, TYPICAL.



NOT FOR CONSTRUCTION

**BLACK & VEATCH**  
Black & Veatch Corporation  
Phoenix, Arizona



FINAL	CITY OF MESA ENGINEERING DEPARTMENT	
	CENTRAL MESA REUSE PIPELINE - PLANTS INTERMEDIATE PUMP STATION	
NOT FOR CONSTRUCTION OR RECORDING	ARCHITECTURAL	DRAWING
	NORTHERN GATE PLAN & ELEVATION	A-00-104
DRAWN BY: RML ENGINEER: GMP APPROVED BY: RAB	SHEET	CATALOG NUMBER:
ACTIVITY: PROJECT NO.: CP0896	OF	