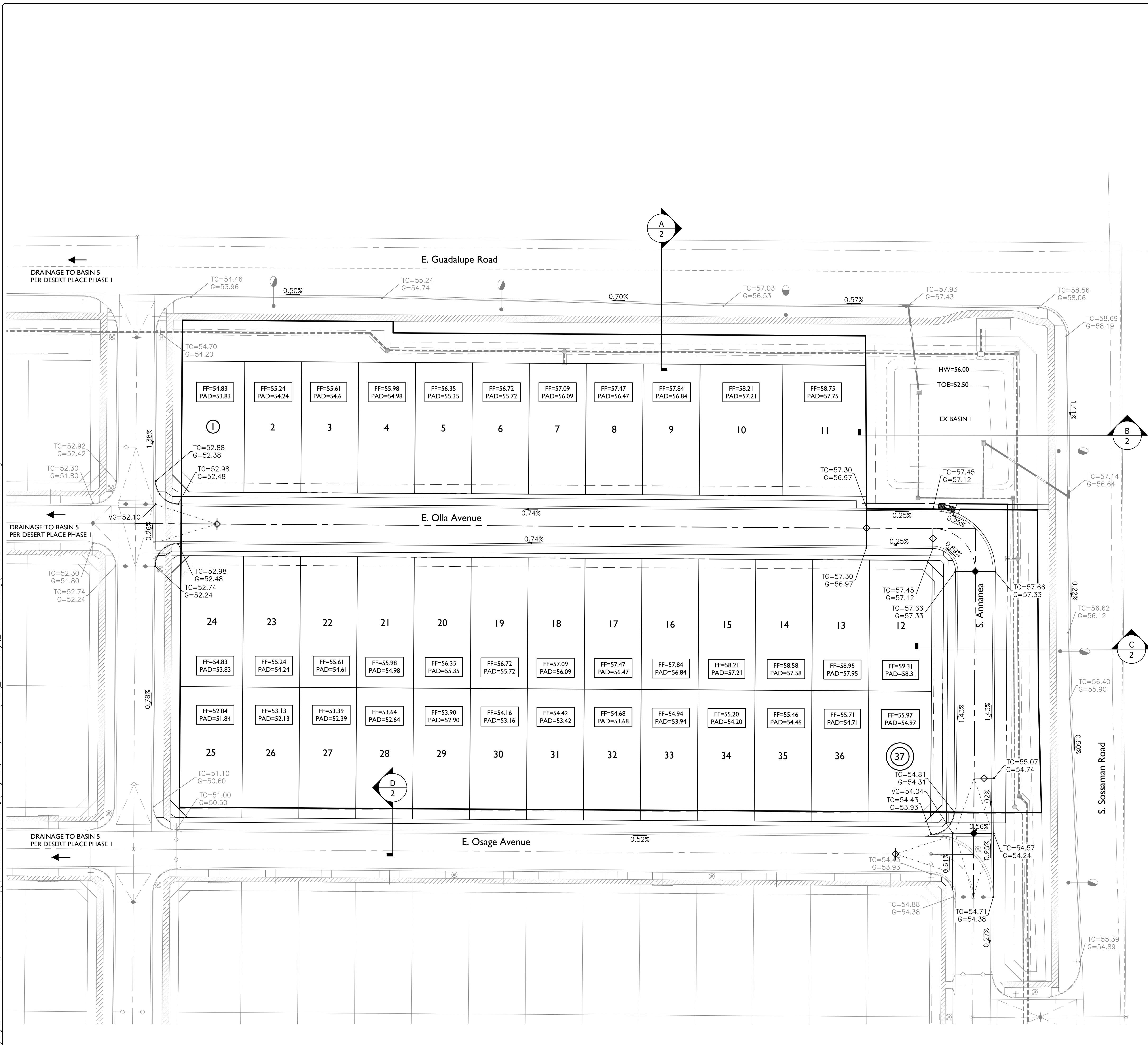


19-0240

Oct. 18, 2019 10:08am \\Eps-m16-f601\shared\Projects\2019\19-0240\Civil\Preliminary\Prelim_Grading_19-0240 - Prelim - GD01.dwg



100-YR. 2-HR RUNOFF & RETENTION CALCULATIONS

VOLUME REQUIRED PER APPROVED DESERT PLACE PHASE I DRAINAGE REPORT
 BASIN 5 VOLUME REQUIRED = 4.62 AC-FT (PRECIPITATION = 2.16 IN)
 BASIN 5 VOLUME REQUIRED = 5.78 AC-FT (PRECIPITATION = 2.70 IN)

BASIN 5 VOLUME REQUIRED CALCULATIONS ACCOUNTED FOR THE DEVELOPMENT OF THIS NEW PARCEL (DRAINAGE AREAS B5-A10 & B5-A11) ALONG WITH A PORTION OF PHASE 2 WHICH IS NOW EXISTING.

VOLUME PROVIDED
 BASIN 5 = 6.51 AC-FT

BENCHMARK:
 NAIL IN POWER POLE AT THE SOUTHWEST COR
 OF THE INTERSECTION AT POWER & GUADALUPE
 ELEVATION=1337.63
 (CITY OF MESA DATUM)

1130 N Alma School Road
 Suite 120
 Mesa, AZ 85201
 T:480.503.2250 | F:480.503.2258
 www.epsgroupinc.com

EPS GROUP

Project: Desert Place at Morrison Ranch Residential Corner Mesa, Arizona

Preliminary Grading Plan

Revisions:

SEPTEMBER 12, 2019 - 1ST SUBMITTAL
 OCTOBER 21, 2019 - 2ND SUBMITTAL

Call us before you start working days before you begin excavating.

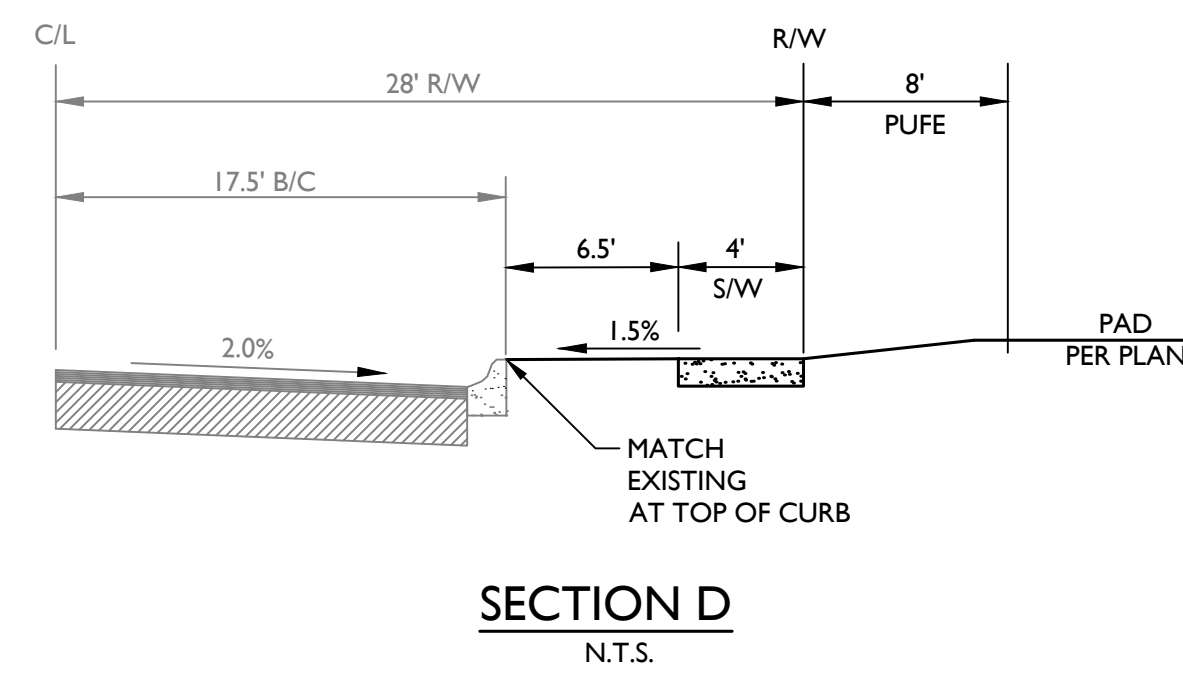
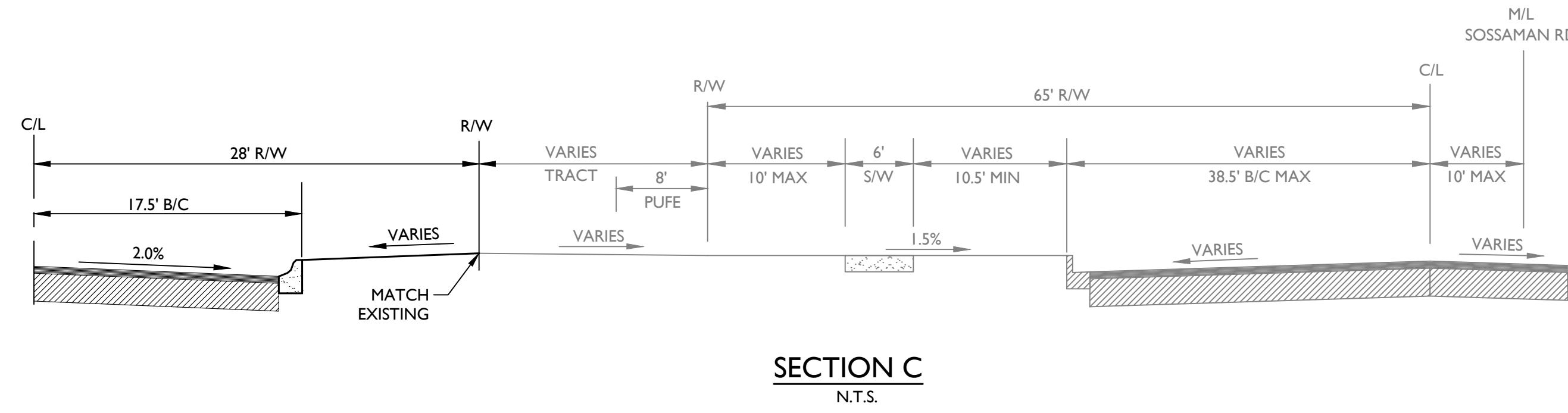
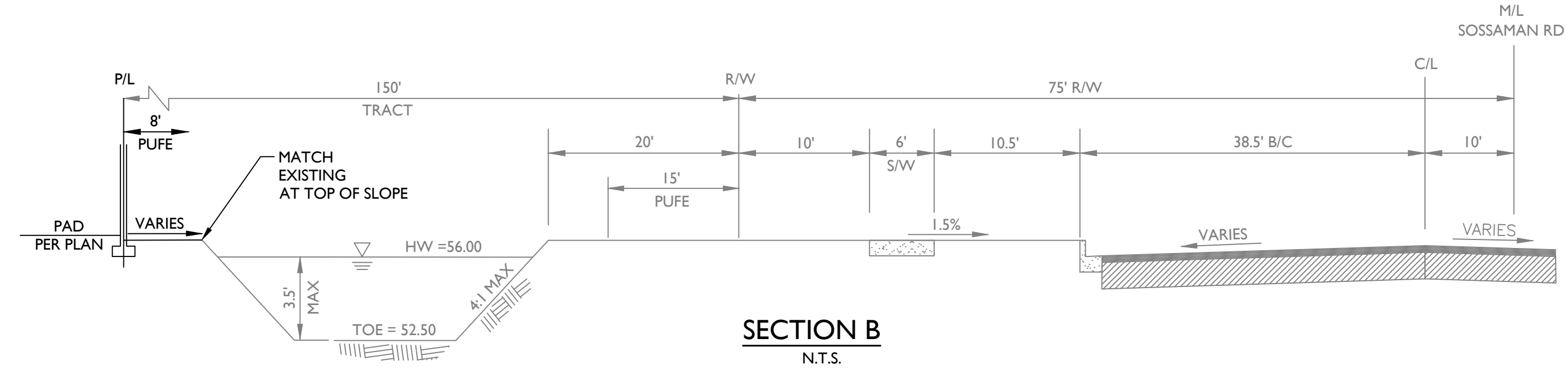
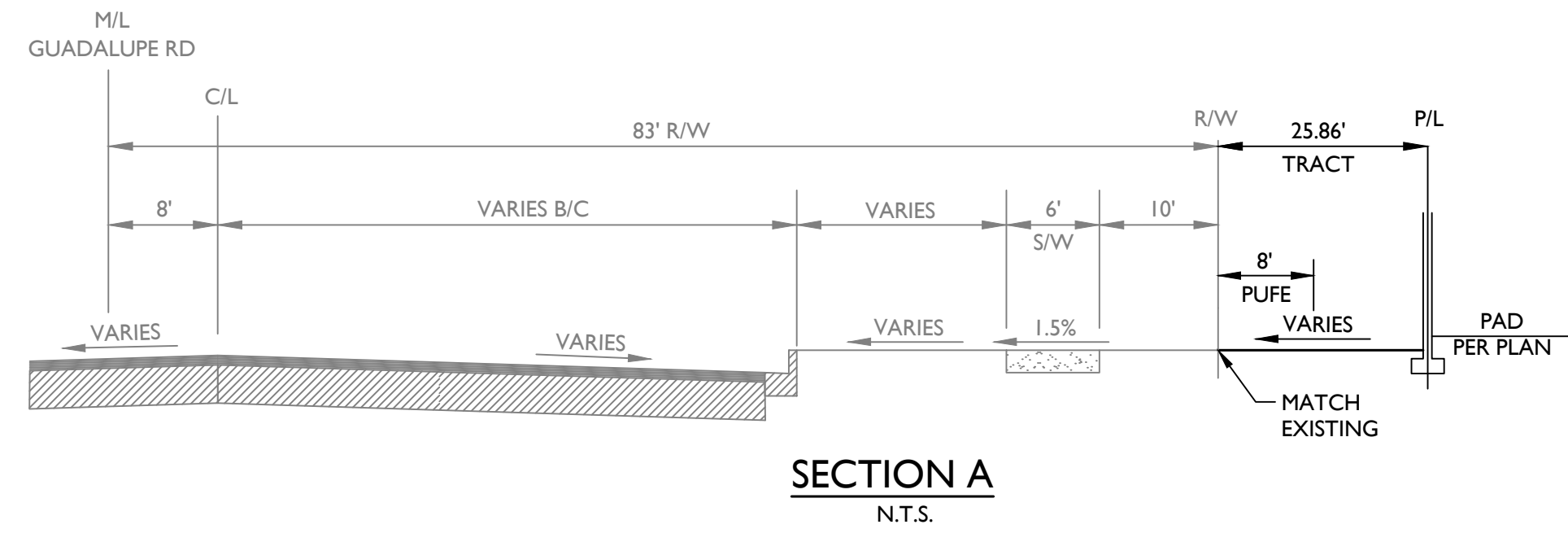
ARIZONA 80

DESIGNED BY: JSD
 DRAWN BY: JSD

REGISTERED PROFESSIONAL ENGINEER (PE)
 CERTIFICATE NO. 44744
 ERIC D. WINTERS
 EXPIRES 10-21-19

Job No. 19-0240
 GD01
 Sheet No. 1 of 2

EPS-01



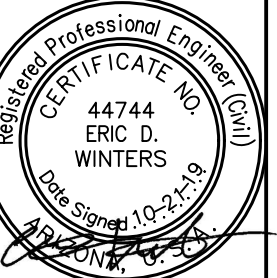
Revisions:

SEPTEMBER 12, 2019 - 1ST SUBMITTAL	
OCTOBER 21, 2019 - 2ND SUBMITTAL	

Call at least one full working day before you begin excavation.

811
Dig it in or 1-800-875-8288
in Maricopa County: (602)831-1100

Designer: JSD
Drawn by: JSD



Job No.
19-0240

GD02

Sheet No.
2
of 2