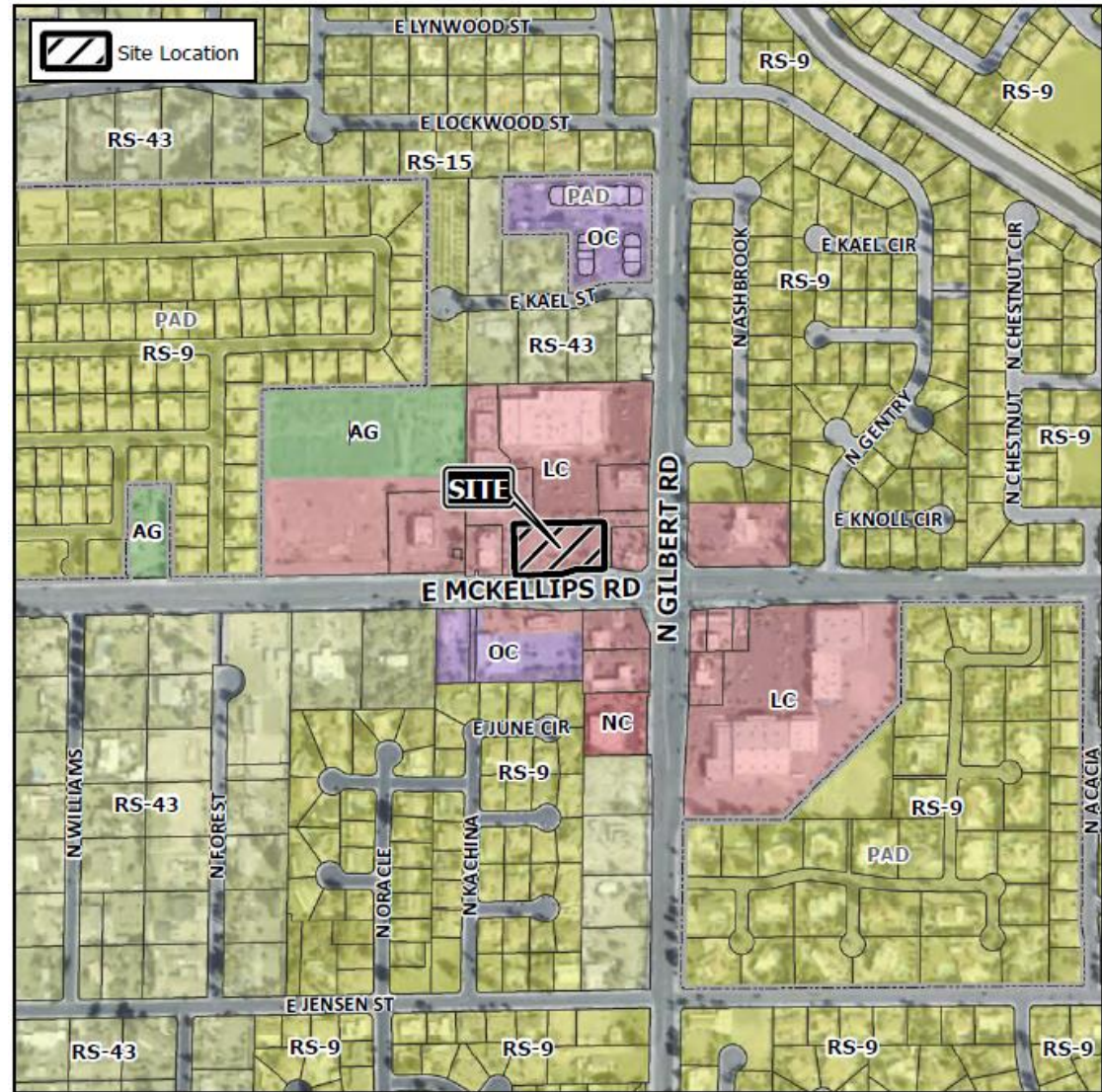




DRB20-00502

Location

- West of the NWC of Gilbert and McKellips Roads





Request

- Design Review per MZO Section 11-71-2

Purpose

- Restaurant with drive-thru

Street View



Looking north from McKellips Road







Looking south from Guadalupe Road

Landscape Plan

PLANTING LEGEND

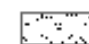
TREES

BOTANICAL NAME / COMMON NAME	SIZE	QTY
 Parkinsonia x 'Desert Museum' Desert Museum Palo Verde	1 1/2" Cal., 7' Ht., 24" Box Min.	5
 Quercus virginiana *Live Oak	1 1/4" Cal., 9' Ht., 24" Box Min.	11
 Sophora secundiflora Texas Mountain Laurel	2 3/4" Cal., 13' Ht., 36" Box Min.	4
 Ulmus parvifolia 'True Green' *True Green Evergreen Elm	1 1/4" Cal., 8' Ht., 24" Box Min.	15
	2 1/2" Cal., 14' Ht., 36" Box Min.	

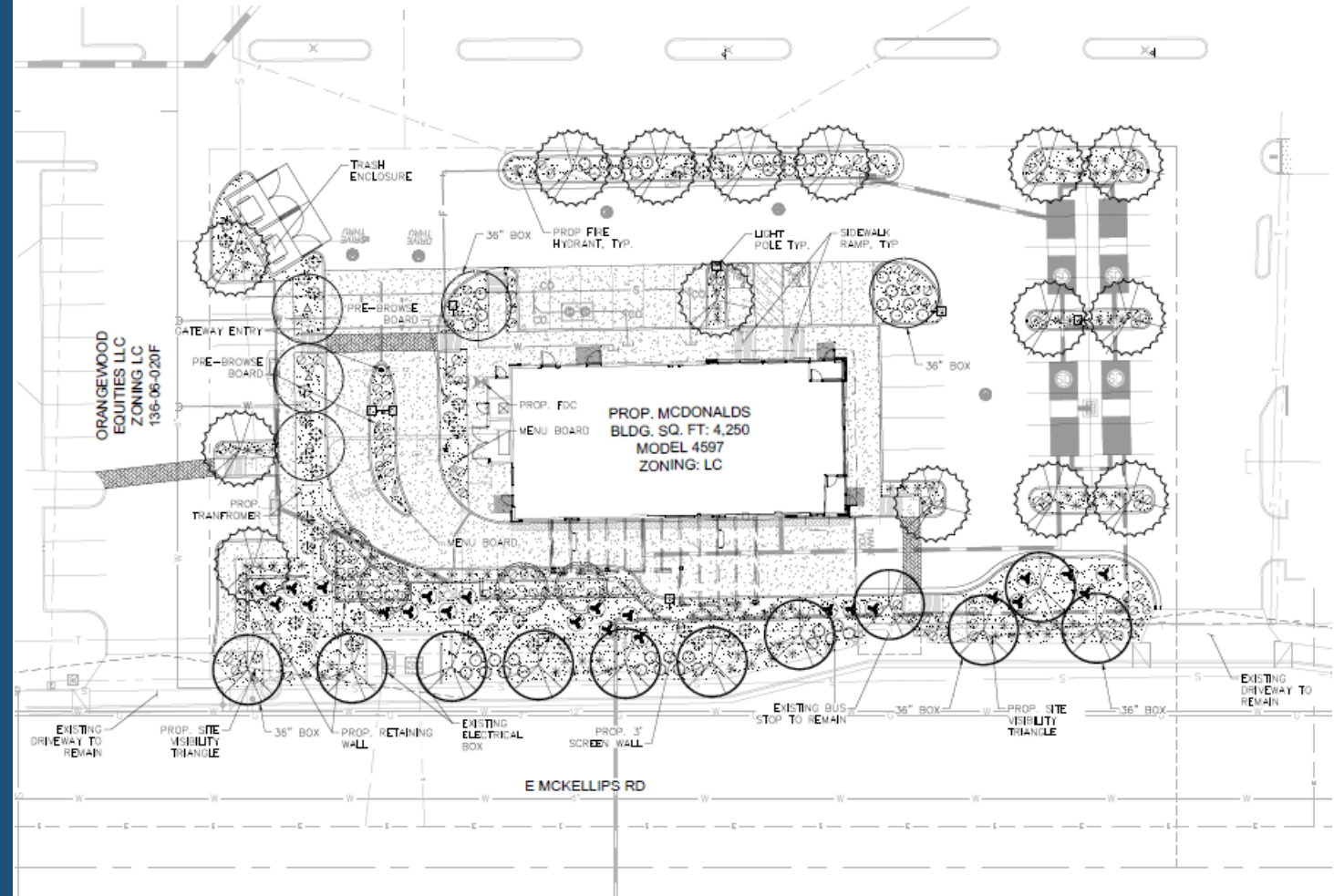
SHRUBS AND ACCENTS

BOTANICAL NAME / COMMON NAME	SIZE	QTY
 Bougainvillea 'La Jolla' La Jolla Bougainvillea	5 Gal.	23
 Hesperaloe parviflora 'perpa' Brakelights Red Yucca	5 Gal.	88
 Lantana camara 'New Gold' New Gold Lantana	1 Gal.	116
 Leucophyllum frutescens 'Compacta' Compact Sage	5 Gal.	42
 Leucophyllum langmaniae 'Rio Bravo' Rio Bravo Sage	5 Gal.	41
 Rosmarinus officinalis 'prostratus' Trailing Rosemary	5 Gal.	29

MATERIALS

DESCRIPTION	QTY
 Decomposed Granite	10,605 SF
1/2" Screened, Madison Gold, 2" Depth Min.	

*LARGER SPECIES LABELED ON PLAN



Rendering



Elevations



North Elevation



East Elevation

Elevations



South Elevation



West Elevation

Color & Materials



E
C1 EIFS/ STUCCO BASE
COLOR: WHITE TO MATCH
CENTER BUILDINGS



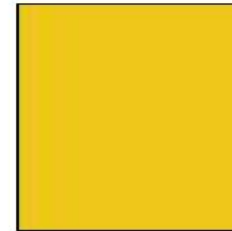
CBP
CEMENT BOARD PANEL
NICHHA INDUSTRIAL
COLOR : GRAY



E C2 C3 SB
C3 C1 EIFS, CANOPY, TIEBACK,
TRELLIS CANOPY
COLOR: SW 1064
(IRON ORE)



CB
1 C1 FIBER CEMENT BOARD
COLOR: SW 1548
(SIERRA REDWOOD)



S PB UN
"YELLOW" - PANTONE
COLOR #1014
COLOR: SIGNS,
BOLLARDS, DRIVE-THRU
CANOPY UNDERSCORE,
BREAK METAL

McDonald's

THE MCDONALD'S DESIGN AND THE MCDONALD'S ROOF DESIGN SHOWN IN THESE DRAWINGS ARE SERVICE MARKS OF MCDONALD'S CORPORATION, REGISTERED IN THE U.S. PATENT AND TRADEMARK OFFICE. © 1998 MCDONALD'S CORPORATION

1948 E. McKELLIPS RD. MESA, ARIZONA 85203

08-26-2020

MATERIAL BOARD



HJI
ARCHITECTURAL
GROUP, LLC
300 W. Greenway Avenue
Suite 200
Phoenix, AZ 85013
P: 602.274.2000
F: 602.274.2423

Lighting Fixtures

HUBBELL
Outdoor Lighting

RATIO Series

AREA/SITE LIGHTER



RELATED PRODUCTS

[Airo](#) [Cimarron LED](#) [Ratio Family](#)

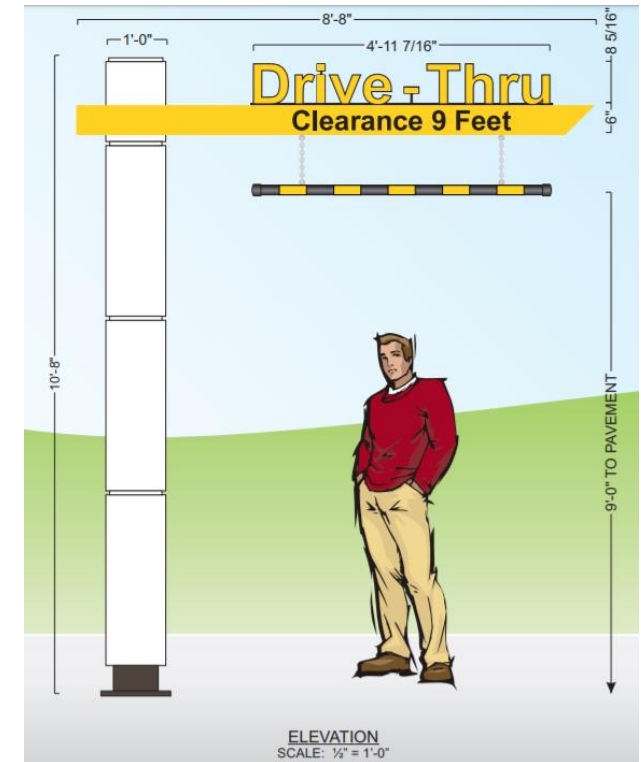
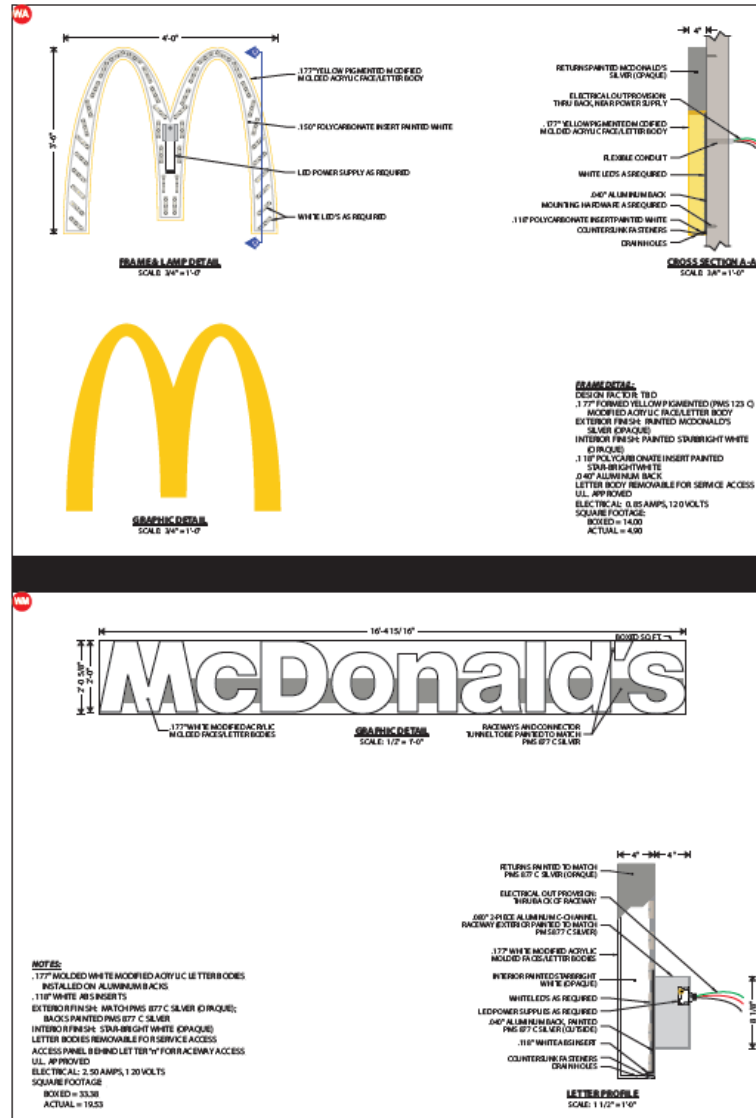
RADIUS WALL SCONCE



LED Downlight Module (1038 Lumens)
12W High Efficacy
Wet Location
120V

Monument Sign

- No monument sign



Design Guidelines

Section 11-6-3

✓	Design incorporates multiple materials
✓	Breaking up mass to human scale
✓	Wall and roof articulation

Summary

- ✓ Staff has no major concerns
- ✓ Project meets MZO requirements

Staff welcomes any feedback

B&W Elevations

