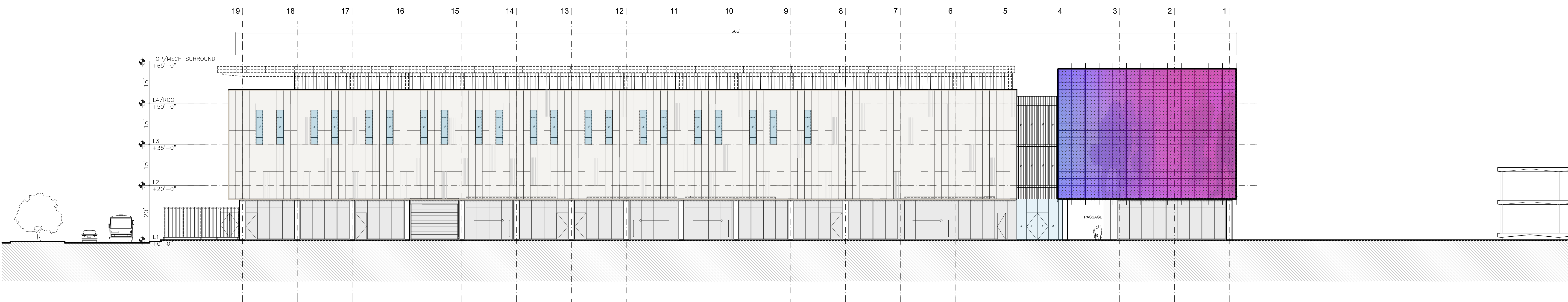
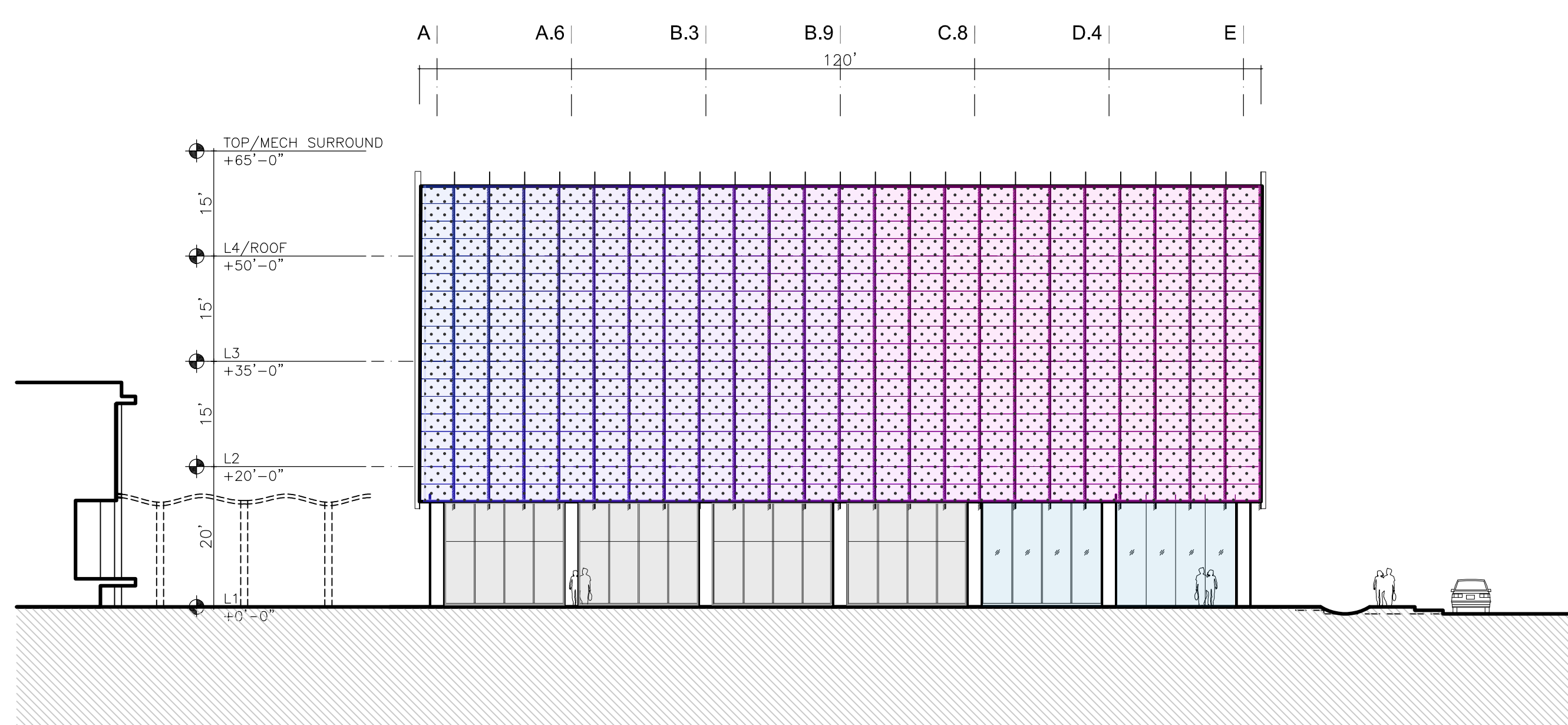


4
south elevation



3
north elevation
1/16" = 1'-0"



2
west elevation
1/16" = 1'-0"



1
east elevation
1/16" = 1'-0"



Holly Street
Studio

Bohlin Cywinski Jackson
Architecture Planning Interior Design

View looking North from South end of Plaza
ASU + The Plaza at Mesa City Center



Holly Street
Studio

Bohlin Cywinski Jackson
Architecture Planning Interior Design

View looking Northwest
ASU + The Plaza at Mesa City Center



Holly Street
Studio

Bohlin Cywinski Jackson
Architecture Planning Interior Design

View looking Northeast
ASU + The Plaza at Mesa City Center



Holly Street
Studio

Bohlin Cywinski Jackson
Architecture Planning Interior Design

View looking Northeast (night)
ASU + The Plaza at Mesa City Center



Holly Street
Studio

Bohlin Cywinski Jackson
Architecture Planning Interior Design

View looking North from plaza
ASU + The Plaza at Mesa City Center



Holly Street
Studio

Bohlin Cywinski Jackson
Architecture Planning Interior Design

View looking Northwest
ASU + The Plaza at Mesa City Center



Holly Street
Studio

Bohlin Cywinski Jackson
Architecture Planning Interior Design

View looking Southeast
ASU + The Plaza at Mesa City Center



Holly Street
Studio

Bohlin Cywinski Jackson
Architecture Planning Interior Design

View looking Northeast
ASU + The Plaza at Mesa City Center



Holly Street
Studio

Bohlin Cywinski Jackson
Architecture Planning Interior Design

Material Study @ Elevation

ASU + The Plaza at Mesa City Center

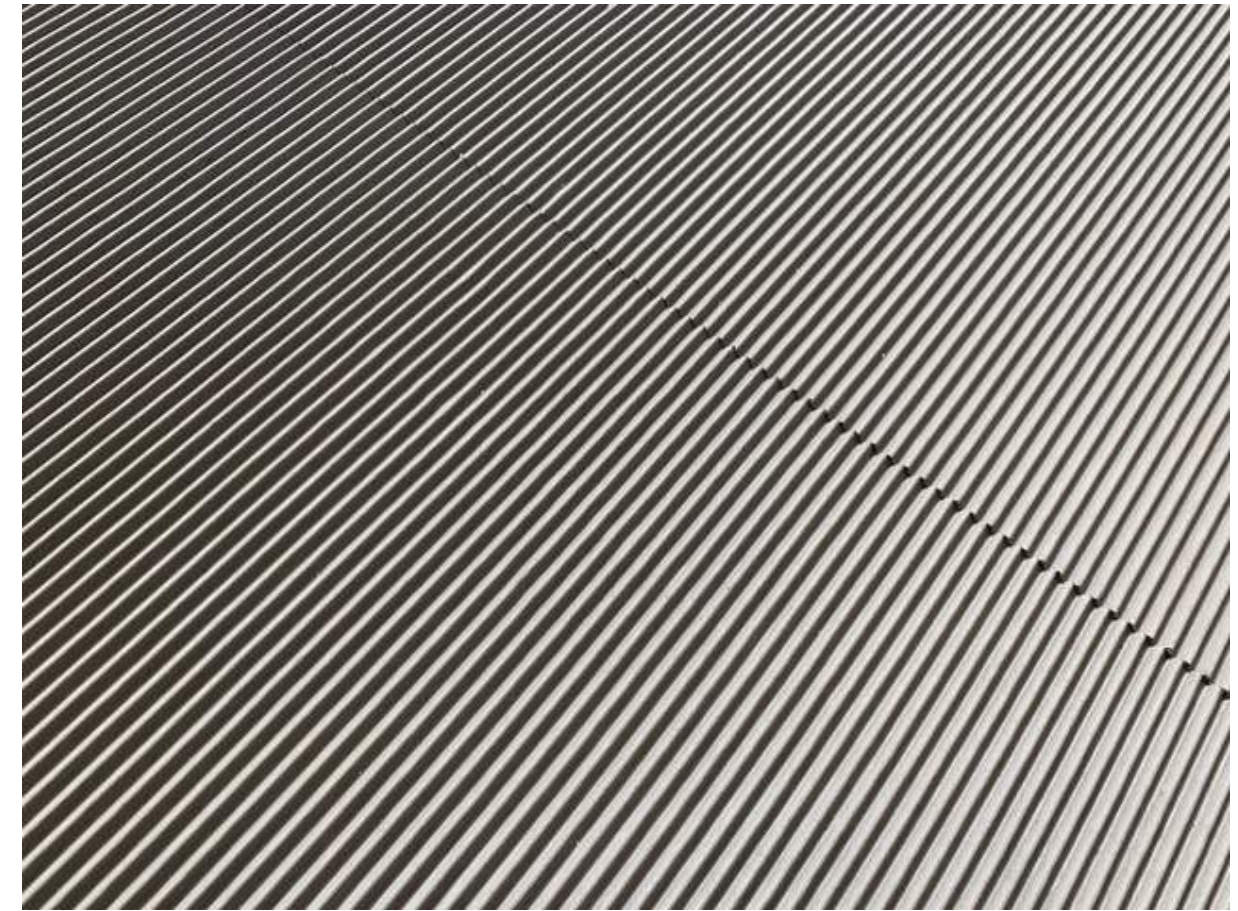


Holly Street
Studio

Bohlin Cywinski Jackson
Architecture Planning Interior Design

Material Study @ Elevation

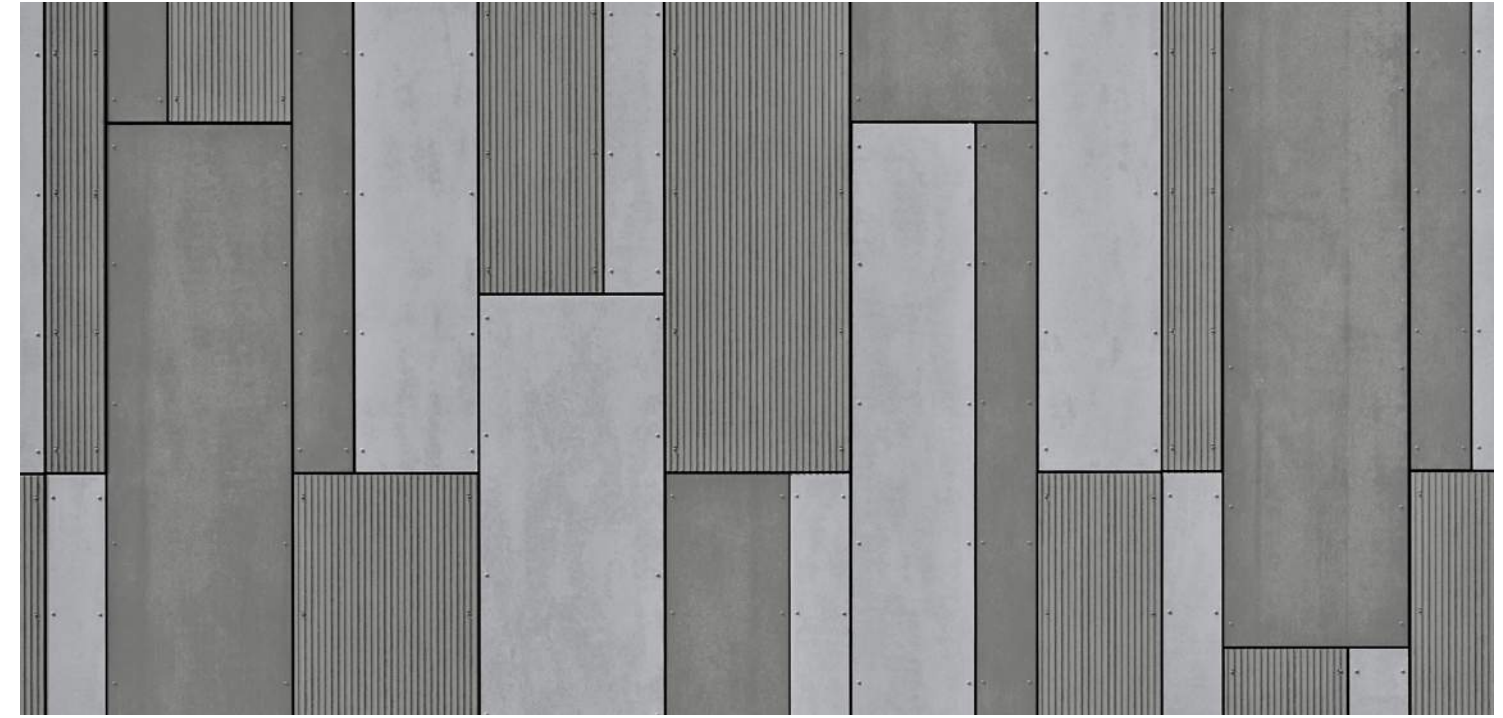
ASU + The Plaza at Mesa City Center



Fibre-C by Rieder



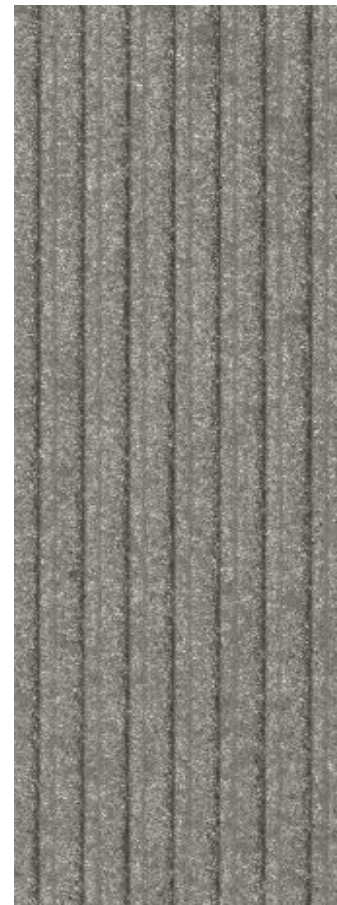
Equitone



Travertine



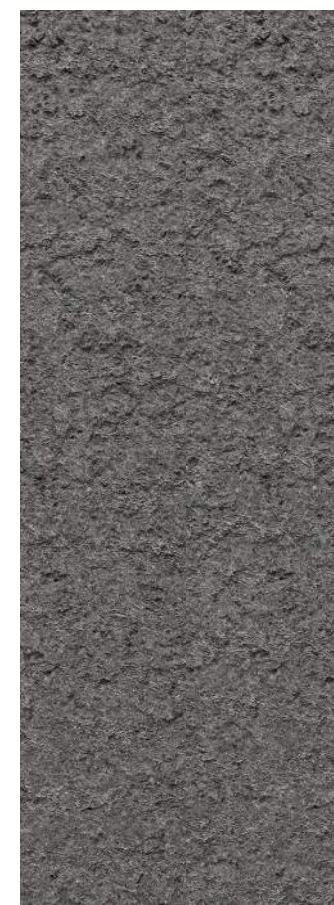
Crater



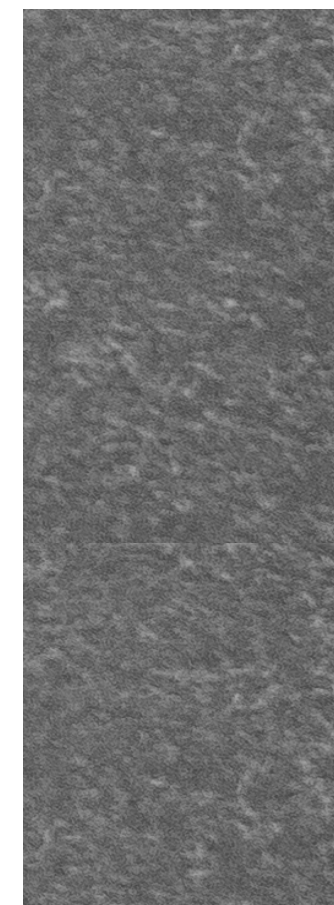
Groove



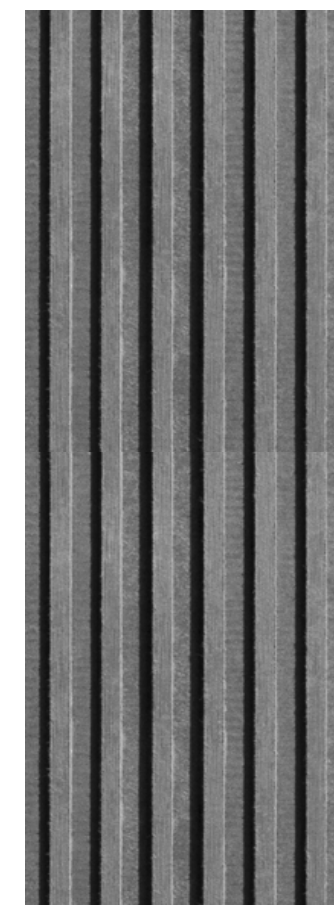
Smooth



Materia



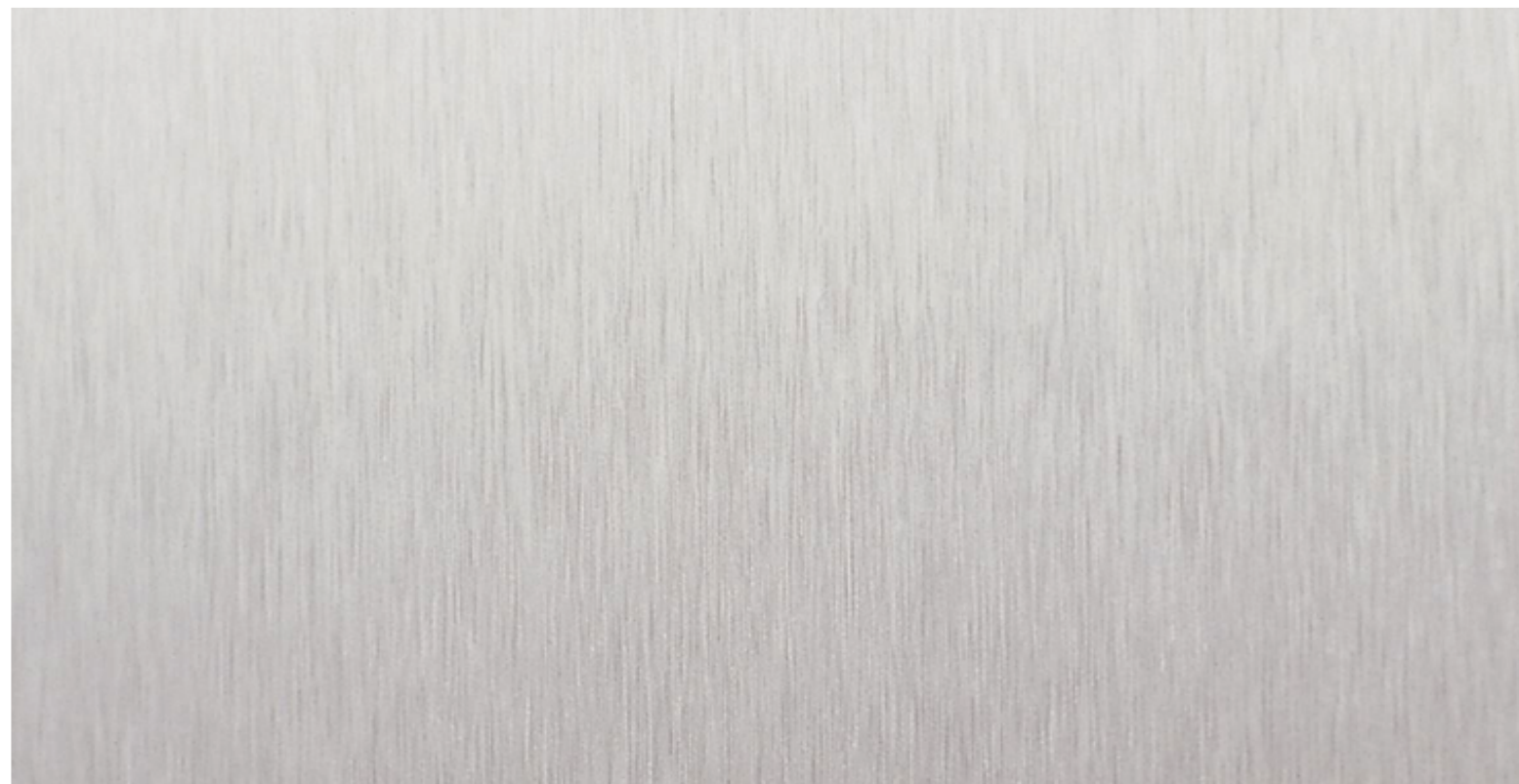
Natura



Linea



Tectiva



Clear Anodized Aluminum : Storefront and Shading fins



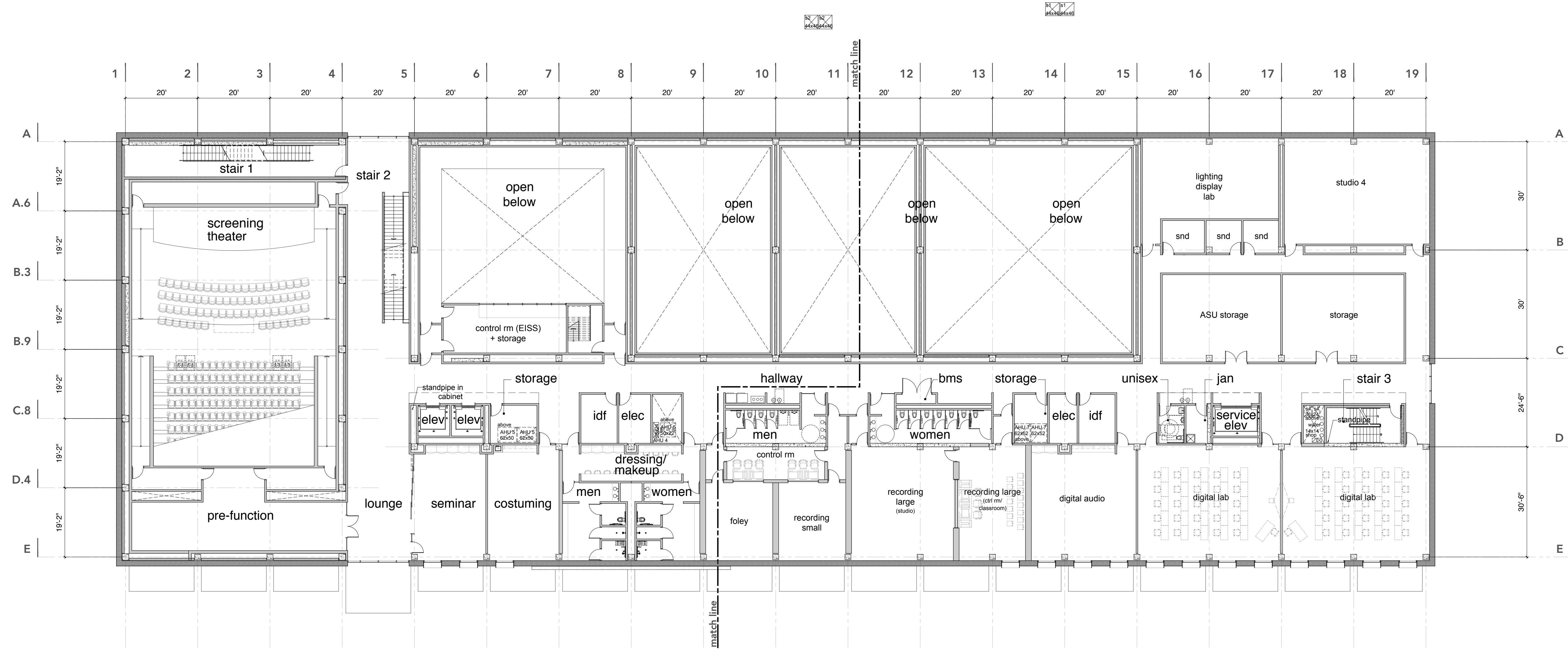
Dark Brushed Metal : Framed Extrusions



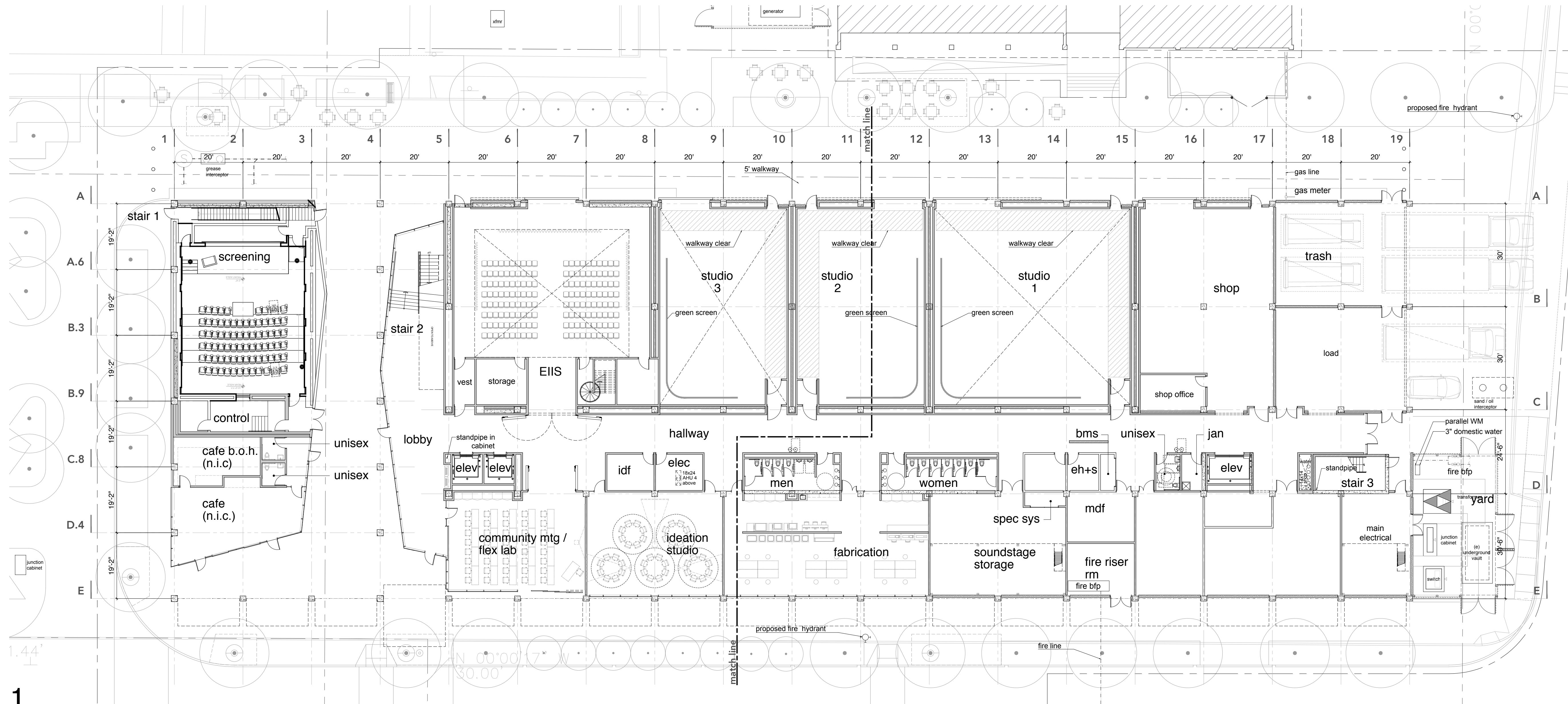
Exposed Concrete : Columns



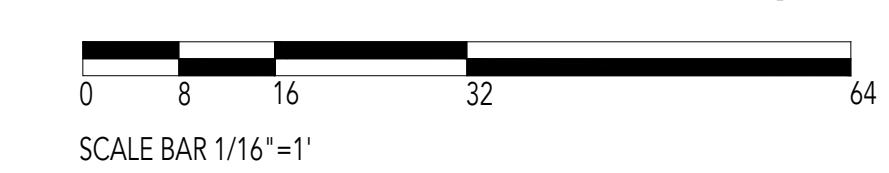
Glazing : Storefront and Windows



2
overall second floor plan



1
overall first floor plan

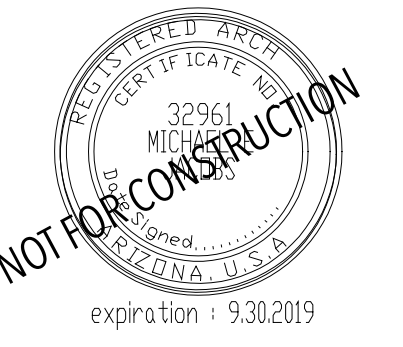


general notes

1. Refer to sheet G0.00 for general information and material hatch legend.
2. Refer to sheet G0.01 for finish schedule.
3. Refer to landscape and civil for all site related elements drawings.
4. Refer to structural drawings for additional information.
5. Refer to mechanical, plumbing, and electrical drawings for additional information.
6. Refer to audio visual and informational technology drawings for additional information.
7. Furniture and equipment shown for reference only.
8. Exterior glazing shall be 1" insulated glass unless noted otherwise.
9. Interior glazing shall be 3/8" monolithic, clear, tempered glass, unless noted otherwise.

wall hatch legend

- concrete construction, see structural drawings
- cmu construction, see structural drawings
- exterior skin assembly
- exterior metal stud construction
- interior metal stud construction, see av/t drawings for additional assembly details
- sound absorbing wall panels



title
overall floor plans

scale
1/16" = 1'

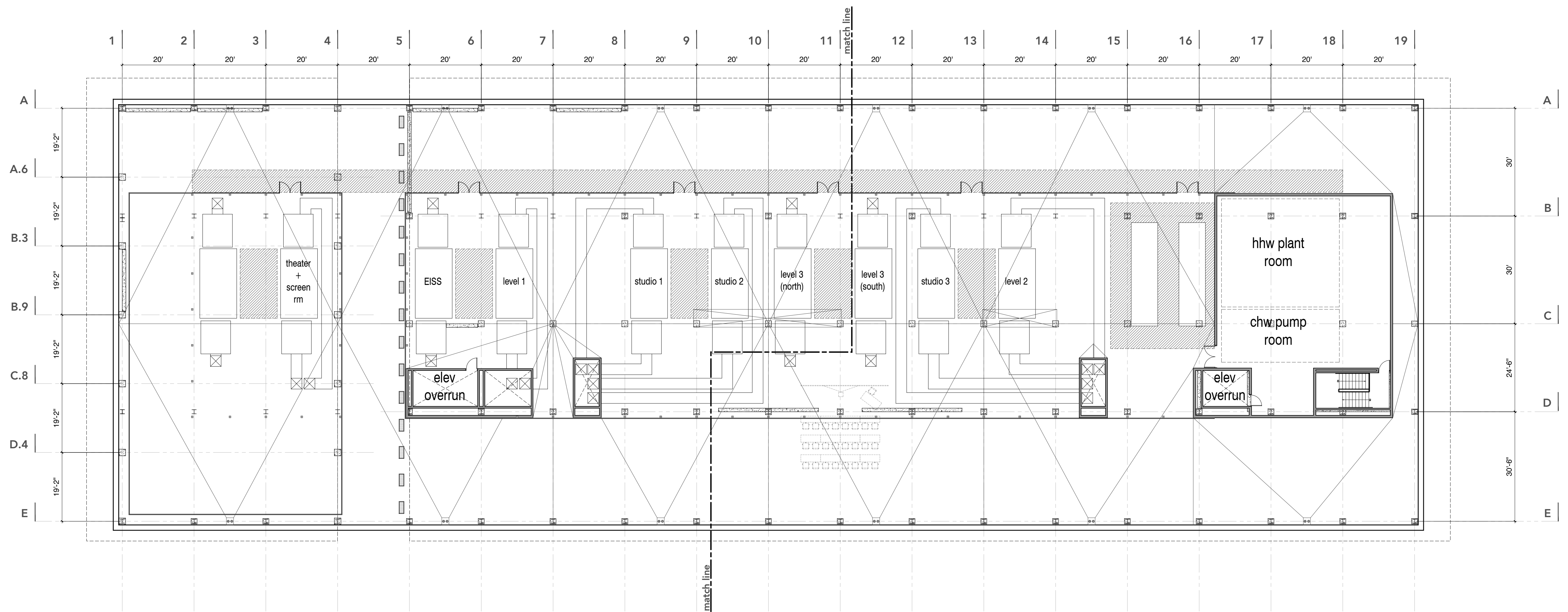
phase

date
30 july 2019

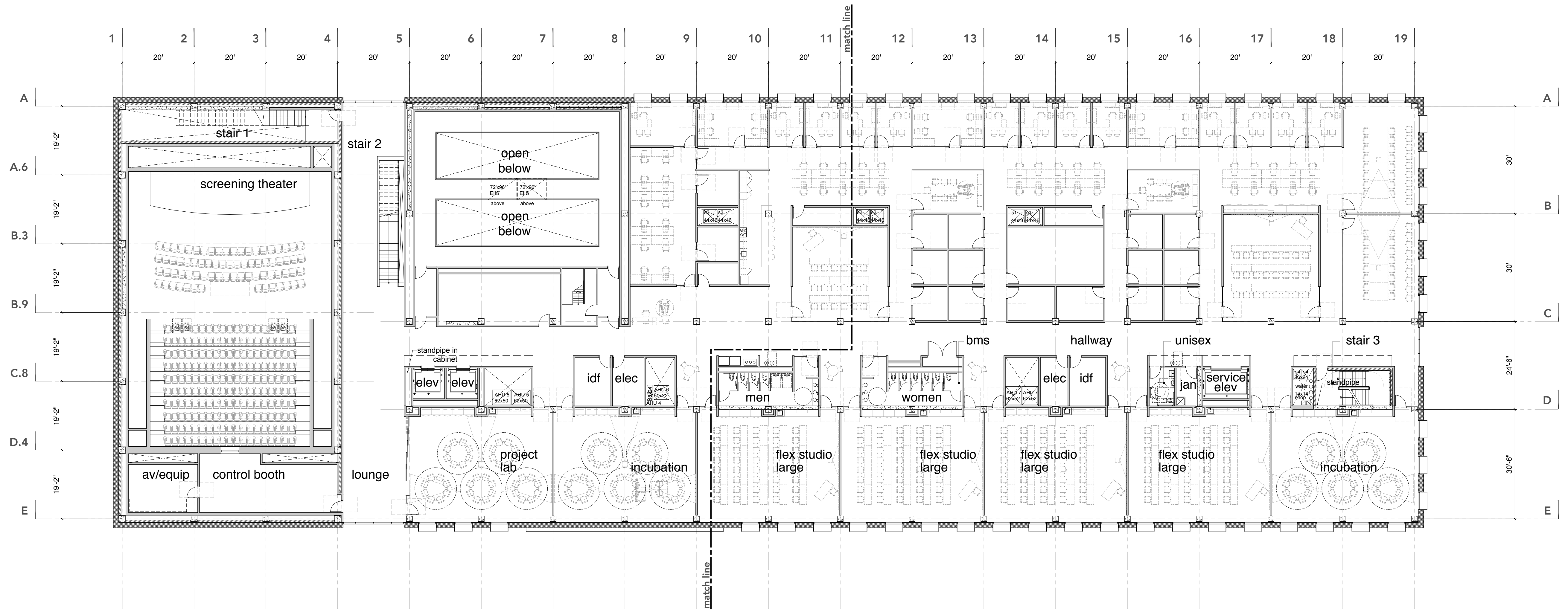
project no.
hss 101 bcj 18516

sheet number

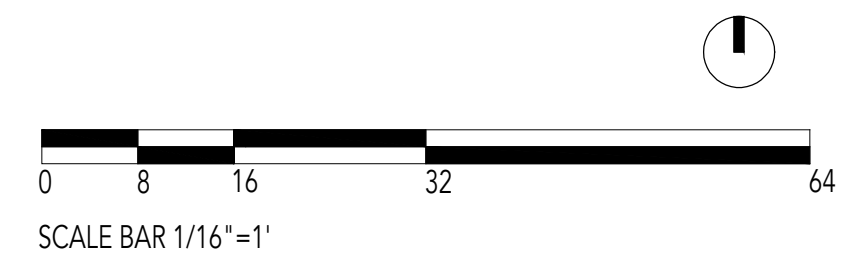
A2.00



2
overall penthouse plan



1
overall third floor plan

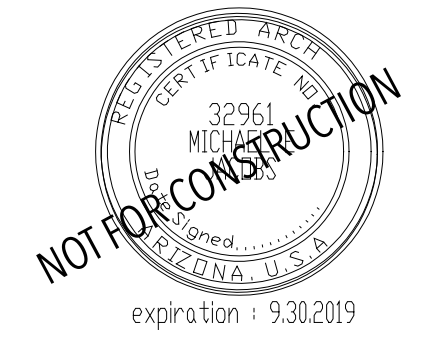


general notes

1. Refer to sheet G0.00 for general information and material hatch legend.
2. Refer to sheet G0.01 for finish schedule.
3. Refer to landscape and civil for all site related elements drawings.
4. Refer to structural drawings for additional information.
5. Refer to mechanical, plumbing, and electrical drawings for additional information.
6. Refer to audio visual and informational technology drawings for additional information.
7. Furniture and equipment shown for reference only.
8. Exterior glazing shall be 1" insulated glass unless noted otherwise.
9. Interior glazing shall be 3/8" monolithic, clear, tempered glass, unless noted otherwise.

wall hatch legend

- concrete construction, see structural drawings
- cmu construction, see structural drawings
- exterior skin assembly
- exterior metal stud construction
- interior metal stud construction, see av/it drawings for additional assembly details
- sound absorbing wall panels



title
overall floor plans

scale
1/16" = 1'

phase

date
30 july 2019

project no.
hss 101 bcj 18516

sheet number

A2.01