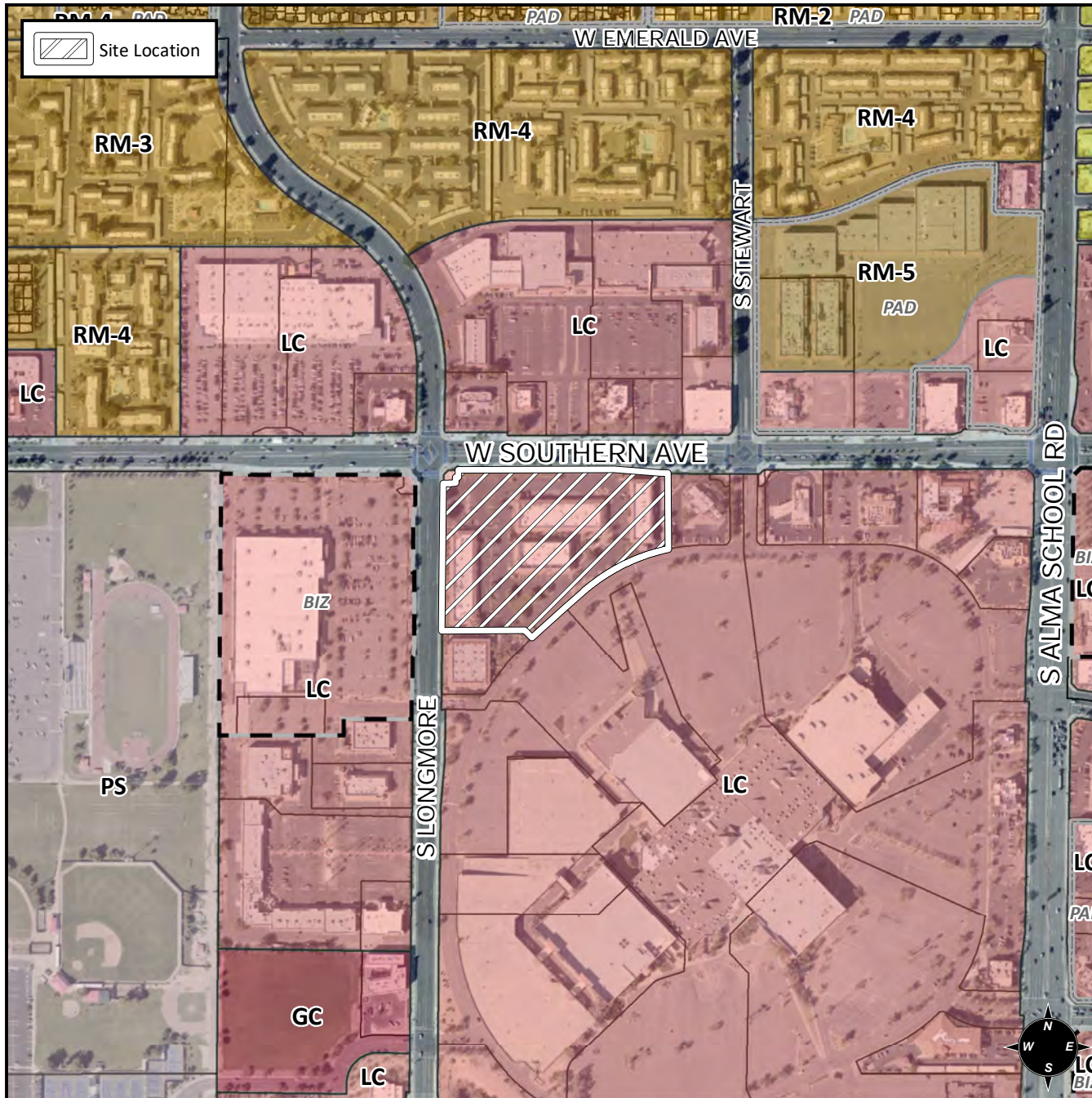


# Planning and Zoning Vicinity Map: ZON19-00802



## Case Details

**CASE:**

ZON19-00802

**PRE-PLAT:**

**SITE / ADDRESS:**

District 3. Within the 1300 and 1400 blocks of West Southern Avenue (south side) and within the 1200 block of South Longmore (east side). Located west of Alma School Road on the south side of Southern Avenue. (6.9 ± acres).

**REQUEST:**

Site Plan Modification. This request will allow for the redevelopment of a group commercial center.

